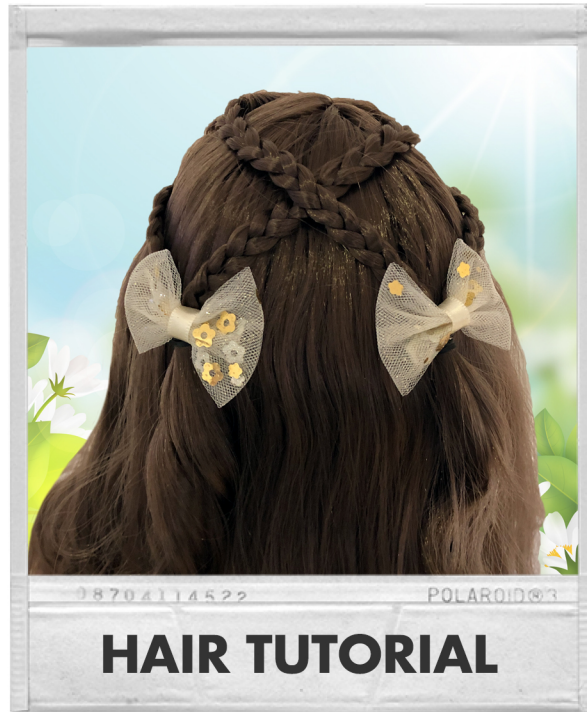


Designa Friend STAY@HOME



What you'll need:



Make sure you've brushed your DAF's hair to get rid of tangles before you start.



DesignaFriend STAY@HOME



1. Take a small section of hair on the top left of the head.



2. Separate the section into 3 equal parts.



3. Plait the hair for as far as you can go.



4. Secure with small hair claw and place over the top of the head.



5. Take the front section of hair just below your plait, and plait this section as before.



6. Secure with another hair claw.



7. Repeat on the other side of her head.



8. She should look like this.



9. Hold the top left and bottom right plaits and take off the claws.



10. Whilst holding the plaits to the right, secure with a hair elastic.



11. Pick up the other two plaits and secure on the left, trying to make this side even with the other.



12. Attach hair clips or flowers to the hair elastics.

DesignaFriend STAY@HOME



... and the result!