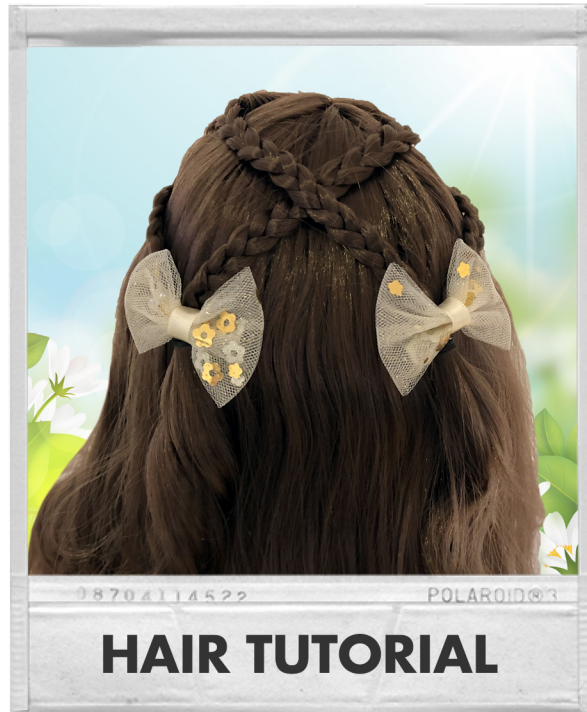


DesignaFriend STAY@HOME



What you'll need:



Make sure you've brushed your DAF's hair to get rid of tangles before you start.



Designa Friend STAY@HOME



1. Take a small section of hair on the top left of the head.



2. Separate the section into 3 equal parts.



3. Plait the hair for as far as you can go.



4. Secure with small hair claw and place over the top of the head.



5. Take the front section of hair just below your plait, and plait this section as before.



6. Secure with another hair claw.



7. Repeat on the other side of her head.



8. She should look like this.



9. Hold the top left and bottom right plaits and take off the claws.



10. Whilst holding the plaits to the right, secure with a hair elastic.



11. Pick up the other two plaits and secure on the left, trying to make this side even with the other.



12. Attach hair clips or flowers to the hair elastics.

DesignaFriend STAY@HOME



... and the result!

Haircare & Styling Tips



Hair Tips: Before styling hair, always make sure there are no tangles. Thoroughly brush straight hair, or run your fingers through curly hair until it is smooth and tangle free.

Keep your hairstyles smooth by spraying lightly with a small water mist bottle to hold down any strays.

If you're going for a curly style, try to leave your plaits in for at least 24 hours. You can also add a small amount of conditioner beforehand to enhance the shape, and wash out afterwards to revert to the original style.

How to freshen Up Designafriend hair!

- Remove any clothing and accessories and wrap your Designafriend in a clean, small hand-towel.
- Fill a sink with warm water and tilt her head so that only her hair is fully covered by the water, keep her head dry.
- Once your Designafriend's hair is wet, remove her from the water and place her on a flat surface. Squirt a small amount of mild shampoo or baby shampoo into your hands and massage through the hair.
- Next, dip your Designafriend's hair into the warm water, combing fingers through to ensure that the shampoo is washed out.
- Again, place your Designafriend doll on a flat surface, take a small amount of conditioner and rub your hands together. Start working the conditioner through the hair from about mid-length downwards.
- Repeat the rinse process, dip your Designafriend's hair into the warm water, combing fingers through to ensure that the conditioner is washed out.

Set your hairstyles by giving them a short light blast of cool air with a hair dryer.

