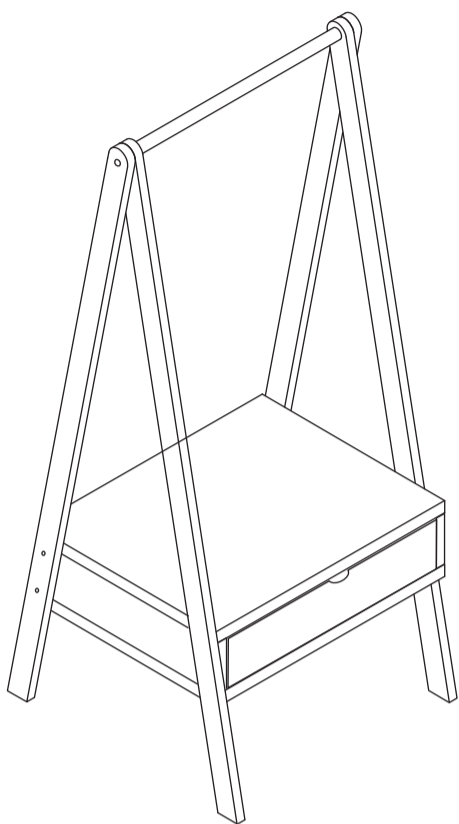





# Dressing Rail With Drawer


habitat 



## Spare Parts

-  [www.argos-support.co.uk](http://www.argos-support.co.uk)
-  [Help@ClickSpares.co.uk](mailto:Help@ClickSpares.co.uk)
-  0370 112 1928

## Customer Support

-  0345 640 2020

Issue 1 - 06/07/22

# Safety and Care Advice

## Product Details

Hab Dressing Rail With Drawer 9553170

### IMPORTANT, RETAIN FOR FUTURE REFERENCE: READ CAREFULLY.

- Keep children and animals away from the work area, small parts could choke if swallowed.
- Make sure you have enough space to layout the parts before starting.
- This product has been constructed to be used in the domestic environment only and not for commercial purposes.
- Assemble the item as close to its final position (in the same room) as possible.
- Assemble on a soft level surface to avoid damaging the unit or your floor.



- We do not recommend the use of power drill/drivers for inserting screws as this could damage the unit.

- Only use hand screwdrivers.
- Parts of the assembly will be easier with 2 people.
  - Dispose of all packaging carefully and responsibly.

## Care and maintenance

- Only clean using a damp cloth and mild detergent. Do not use abrasive cleaners.
- Use a dry cloth to clean the product, furniture polish is not recommended.
- From time to time check that there are no loose screws, nuts or bolts. If there are please retighten.
- This product should not be discarded with household waste. Take to your local authority waste disposal centre.

## Additional Guidance

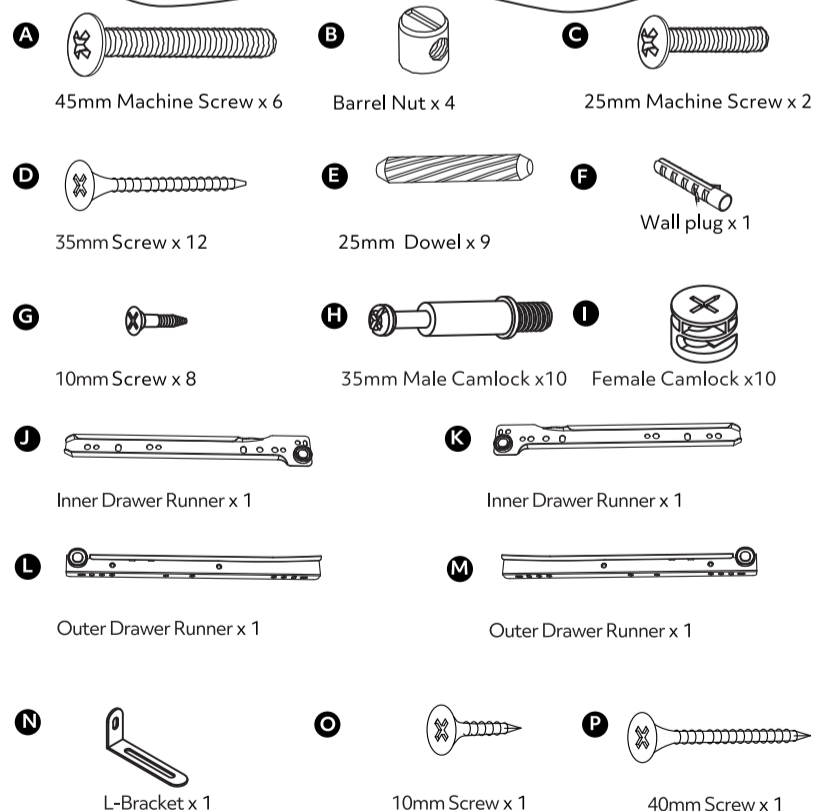
- Assemble all parts and bolts loosely during assembly, only once the product is complete should you fully tighten the bolts.
- Regularly check and ensure that all bolts and fittings are tightened properly.
- This product is compliant FIRA FRQG C001, FIRA FRQG C004

Sainsbury's Argos is a trading name of both: Argos Limited, Registered office: 489-499 Avebury Boulevard, Milton Keynes, United Kingdom, MK9 2NW, registered number: 01081551 (England and Wales); and Sainsbury's Supermarkets Limited, Registered office: 33 Holborn, London, EC1N 2HT, registered number: 03261722 (England and Wales). Both companies are subsidiaries of J Sainsbury's plc.

2

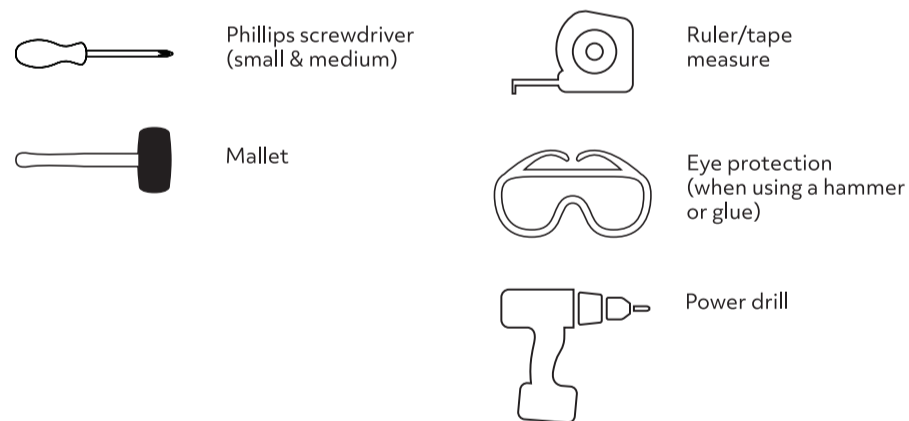
## Fittings (Shown to scale)

### Bag 1



3

## Tools required



4

# Panels



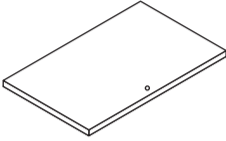
**1** Right Side Support x 1  
151.5 x 5 x 1.8cm

**2** Hanging Rail x 1  
2.5 x 2.5 x 53.6cm

**3** Left Side Support x 1  
151.5 x 5 x 1.8cm



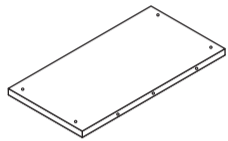
**4** Left Side Support x 1  
151.5 x 5 x 1.8cm



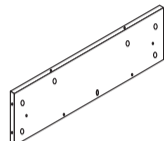
**5** Top Panel x 1  
52.8 x 33 x 1.2cm



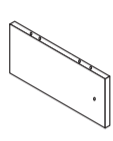
**6** Right Side Support x 1  
151.5 x 5 x 1.8cm



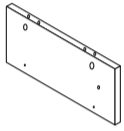
**7** Bottom Panel x 1  
52.8 x 28.5 x 1.5cm



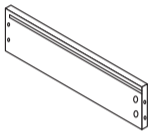
**8** Back Panel x 1  
56.4 x 13.5 x 1.5cm



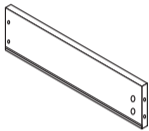
**9** Left Side Panel x 1  
28.5 x 12 x 1.5cm



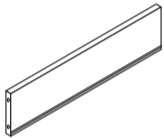
**10** Right Side Panel x 1  
28.5 x 12 x 1.5cm



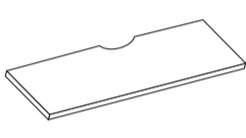
**11** Drawer Left Side Panel x 1  
27 x 8 x 1.5cm



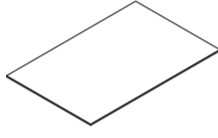
**12** Drawer Right Side Panel x 1  
27 x 8 x 1.5cm



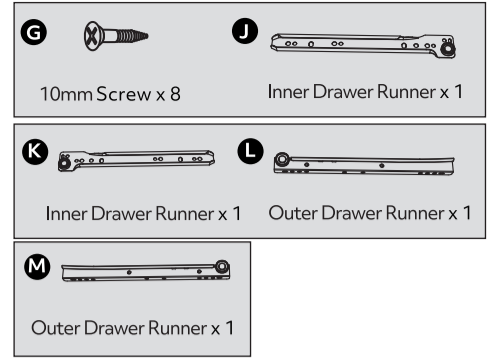
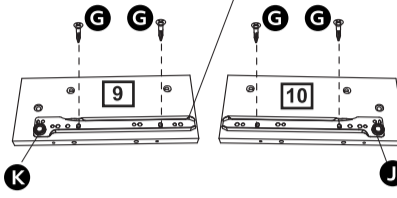
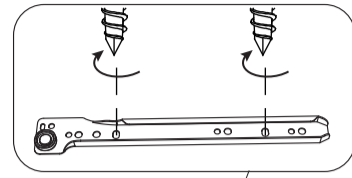
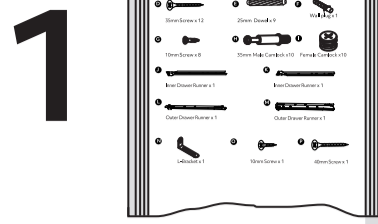
**13** Drawer Back Panel x 1  
44.2 x 8 x 1.5cm



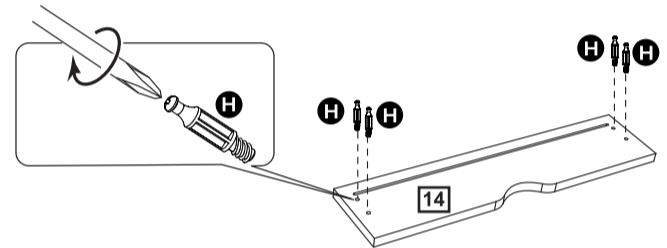
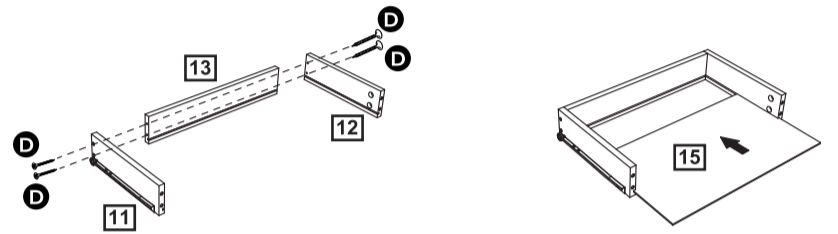
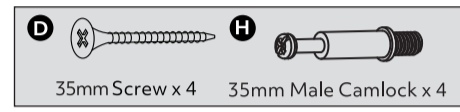
**14** Drawer Front Panel x 1  
49.4 x 11.6 x 1.5cm



**15** Drawer Bottom Panel x 1  
45.2 x 26.5 x 0.3cm

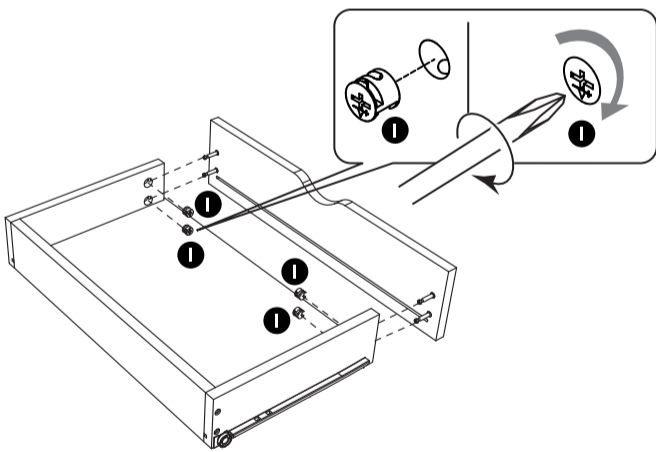


## 2

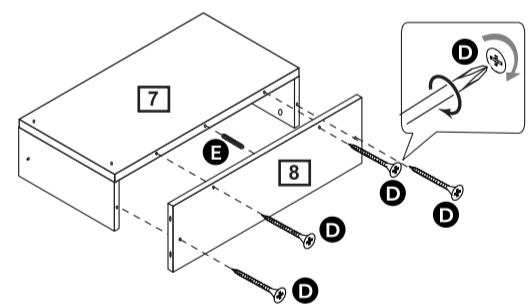
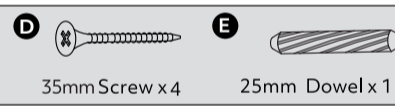


6

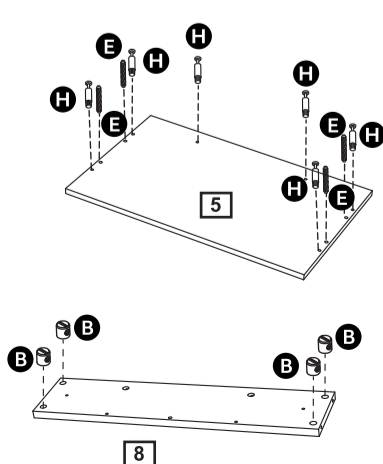
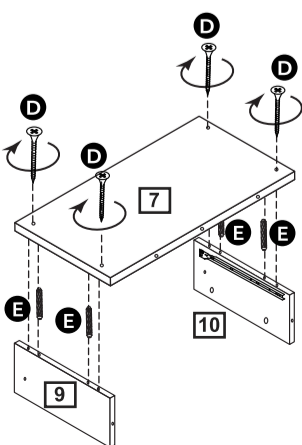
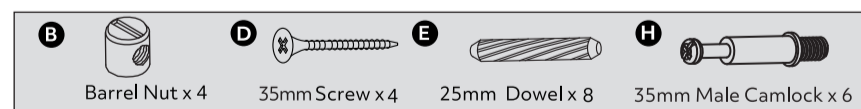
## 3



## 5

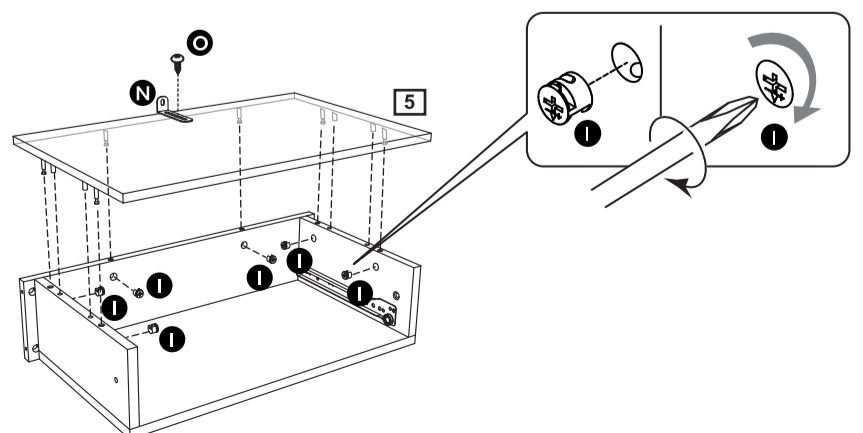
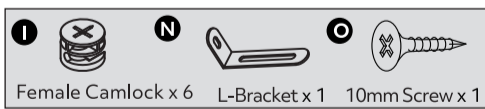


## 4



7

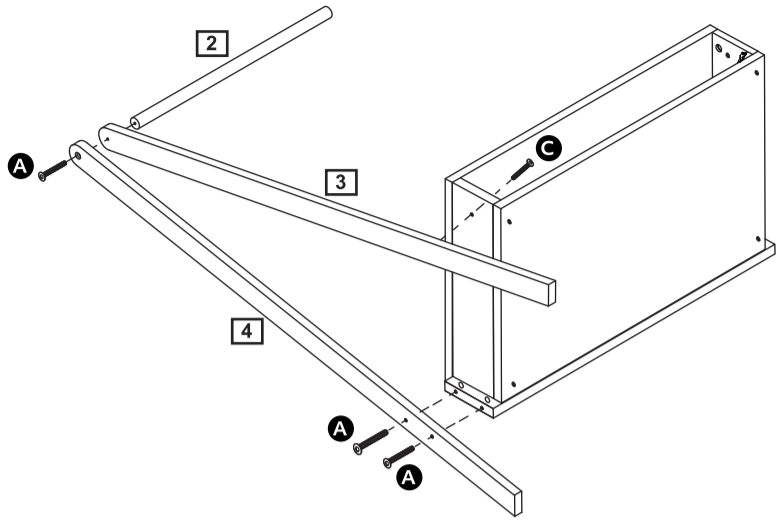
## 6



8

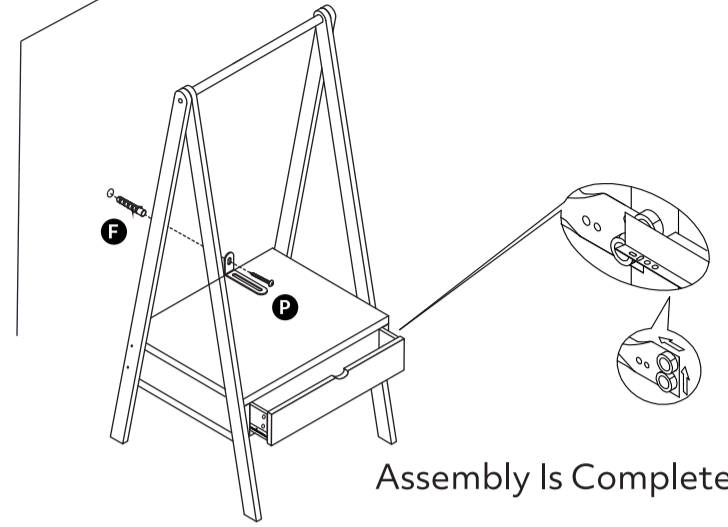
# 7

- A** 45mm Machine Screw x 3
- C** 25mm Machine Screw x 1



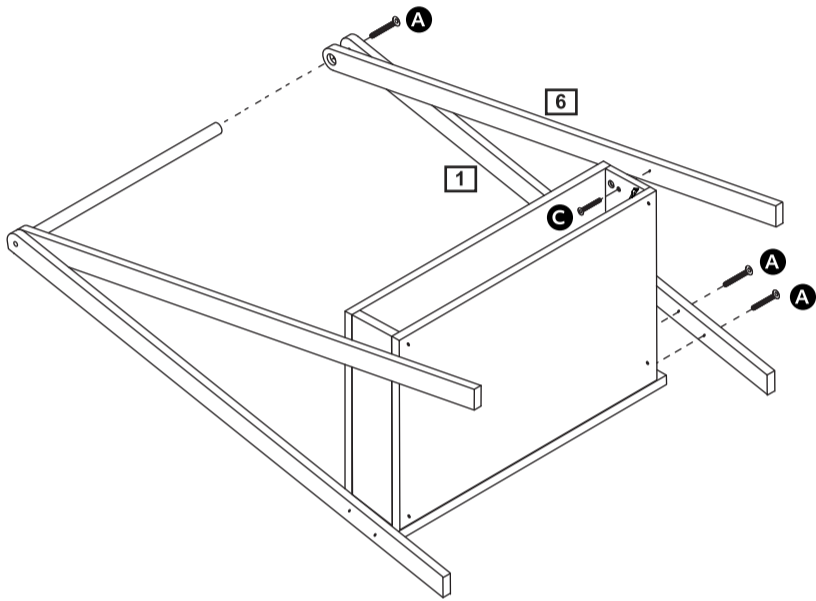
# 9

- P** 40mm Screw x 1
- F** Wall plug x 1



# 8

- A** 45mm Machine Screw x 3
- C** 25mm Machine Screw x 1



# A Guide to Wall Mounting & Fixings

## Important note:

If plastic wall plugs are supplied with your product:



- these are only suitable for use in masonry walls.

If you are in any doubt about the correct wall plugs for your wall, seek professional advice.


Failure of the product due to using incorrect fixings is the responsibility of the installer



**Important:** When drilling into walls always check that there are no hidden wires or pipes etc.

Make sure that the screws and wall plugs being used are suitable for supporting your unit. Consult a qualified tradesperson if you are unsure.

### Hints:

- 1: General rule:  Always use a larger screw and wall plug if you are not sure.
- 2: Ensure you use the recommended drill bit to match the wall plug and hole size.
- 3: Ensure you drill the hole horizontally, do not force the drill or enlarge the hole.
- 4: Take extra care when drilling high walls, ceilings and ceramic tiles. Ensure wall plugs are inserted beyond the thickness of the ceramic tiles to avoid the tiles splitting or cracking.
- 5: Ensure wall plugs are well fitted and are a tight fit in the drilled hole.

**WARNING!** IN ORDER TO PREVENT OVERTURNING THIS PRODUCT MUST BE USED WITH THE WALL ATTACHMENT DEVICE PROVIDED

Serious or fatal crushing injuries can occur from furniture tipping over. To help prevent this item of furniture tipping over:

- Use the wall attachment device provided
- Do not let children climb or hang on drawers, doors or shelves
- Place the heaviest items in the lower drawers or shelves
- Do not place TV's or other heavy objects on top of this product, unless it has been specifically designed to support them

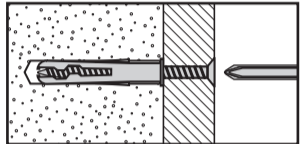
An attachment device is provided with your product, however you will need to source suitable fixings for your wall type. If in doubt, please consult a qualified tradesperson.

Always ensure the wall to be drilled is free from hidden electrical wires, water and gas pipes.

## Types of walls

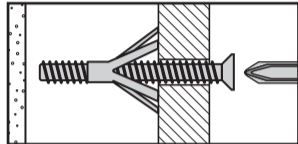
You can use one of the following types of wall plug if your walls are made of brick, breeze block, concrete, stone or wood.

### No.1 "General Purpose" wall plug



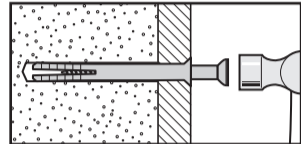
Generally aerated blocks should not be used to support heavy loads, use a specialist fitting in this case. For light loads, general purpose wall plugs can be used.

### No.3 "Cavity Fixing" wall plug



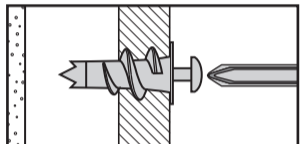
For use with plasterboard partitions or hollow wooden doors.

### No.5 "Hammer Fixing" wall plug



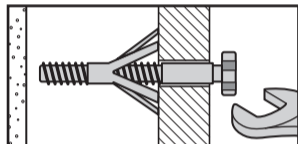
For use with walls stuck with plasterboard. The hammer fixing allows it to be fixed to the wall rather than the plasterboard. Always check the fixing is secure to the retaining wall.

### No.2 "Plasterboard" wall plug



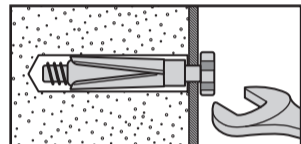
For use when attaching light loads on to plasterboard partitions.

### No.4 "Cavity Fixing-Heavy Duty" wall plug



For use when fitting or supporting heavy loads such as shelving, wall cabinets and coat racks.

### No.6 "Shield Anchor" wall plug Heavy loads



For use with heavier loads such as TV & HiFi speakers and satellite dishes etc.



## Care & Maintenance

**Safety:** Always check the fitting and location to ensure your safety in and around the home.

**Fitting:** From time to time check the fitting to ensure the wall plugs or screws do not become loose.

Revision 2 - 07/19/21

## SAFETY INFORMATION

### A few important points before you start:

- Please read the instructions right through before you start, and check that all the components have been included in the pack; we find separating all the hardware into piles makes it easier to be sure that everything is present and correct.
- Make sure you have the right tools. Allen keys are provided if required, but screwdrivers and other tools are not. You will find details of the tools you need at the beginning of the instructions.
- It is a good idea to build the unit in the room where you are going to be using it, to avoid the need to move it after it has been assembled.
- Do not throw away any packing materials until assembly is complete, just in case you accidentally discard smaller parts or hardware.

### Safety Warnings:

- Assembly to be carried out by a competent adult only.
- During assembly children should be kept away from the product due to possible risk of injury.
- Do not use this item if any components are missing or damaged.

### • Important : Retain these instructions for future reference.

- The standard is applicable to all types of domestic seating, tables and storage furniture for use by children from 3 years old to 12 years old.
- Max load - 10kg.

- Regularly check all fastenings to ensure that they properly tightened.
- Unassembled product contains small parts which may present a choking hazard.
- Assemble and use on a flat and level surface.
- DO NOT use power tools in the assembly of this product as there is a risk of over-tightening and consequently splitting of the wood.
- Please retain these instructions for future reference.
- Only for domestic use.

### Product Care:

- Wipe clean using a soft damp cloth followed by a dry cloth.
- Do NOT use cleaning products which contain ammonia, solvents or abrasive material.
- Do NOT expose the item to extremes of heat and humidity.



**Warning: Only for indoor and domestic use. Not suitable for children under 3 years. Small parts. Choking hazard.**

The specifications and colours may vary from the pictures on the packaging.

Manufactured: Sainsbury's Argos Asia Ltd.,