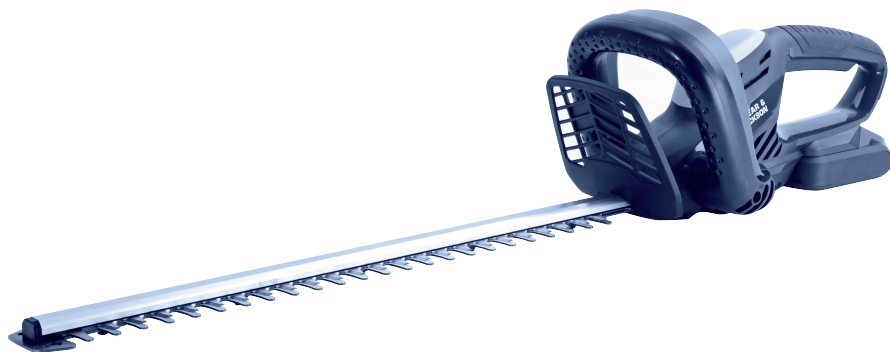


18V

Cordless Hedge Trimmer

S1851CHX2

**Important - Please read these instructions
fully before starting assembly**

These instructions contain important information that will help you get the best from your trimmer, ensuring it is assembled correctly and safely. If you need help or have damaged or missing parts, call the Customer Helpline on 0345 605 2067

**AFTER SALES SUPPORT
0345 605 2067**

SAN No.: 0321/8008/76ZF

SPEAR & JACKSON SINCE 1760

For more than 250 years gardeners have enjoyed high quality performance and great results using Spear & Jackson tools.

Our garden power tools combine continuous innovation and the latest in manufacturing technologies with a proud heritage.

Each product is carefully designed with performance, comfort and durability firmly in mind, which has earned Spear & Jackson an enviable reputation as a maker of tools to trust.

3 YEAR GUARANTEE

As a testament to the quality of our products, we offer a 3 year manufacturers warranty and a comprehensive after sales service.

The warranty covers manufacturing faults, however in the event that the item has been deliberately damaged, used in a commercial environment or disassembled then the warranty will be null and void.

Please retain proof of purchase.

7 DAYS A WEEK TECHNICAL SUPPORT

We want you to get the best out of your products. Our easy-to-read instruction manual guides you with best practice use and maintenance tips. Please call **0345 605 2067** for technical support, we can solve around 80% of questions directly over the phone.

We hope you enjoy your product and we look forward to any feedback, as this allows us to develop even better products in the future.

CONTENTS

Safety Information	04
Description of symbols	04
General safety	05
Additional safety instructions for batteries and chargers	09
Additional safety instructions for hedge trimmer	13
Maintenance and storage safety	15
Intended use	16
Box Content / Parts	17
Assembly	18
Check battery capacity	18
Charging the battery	19
Unpacking	19
Operation	22
General operation	22
Switching on/off	22
Trimming times	22
Trimming	23
Maintenance	25
Technical Data	28
Troubleshooting	30
Warranty	31

SAFETY INFORMATION

Please read these instructions fully before operating or maintaining your machine

DESCRIPTION OF SYMBOLS

The following warning symbols appear throughout this manual and indicate the appropriate safety measures you should take when operating and maintaining the hedge trimmer.

WARNING SYMBOLS ON THE MACHINE



Read instruction handbook before operating this machine.



WARNING!

This is a warning symbol. This symbol is used throughout the user guide whenever there is a risk of personal injury. Ensure that these warnings are read and understood at all times.



Wear ear protection



Wear eye protection



Wear safety helmet



Wear protective gloves



Wear proper safety shoes.



Keep bystanders away.
Thrown objects can cause serious injury



Disconnect the battery pack before any repair or maintenance.



Do not expose or operate the tool in rain.



Keep fingers away from moving blades.



Guaranteed sound power level value in 90dB.



Waste electrical products should not be disposed of with household waste. Please recycle where facilities exist. Check your Local Authority or retailer for recycling advice.



Conforms to all relevant safety standards.

SAFETY INFORMATION

Please read these instructions fully before operating or maintaining your machine

WARNING SYMBOLS ON THE CHARGER



Read instruction handbook before operating this machine.



The charger is for indoor use only.



Double insulation.



Pole orientation.

T/2A



Fuse.



Waste electrical products should not be disposed of with household waste. Please recycle where facilities exist. Check your Local Authority or retailer for recycling advice.

WARNING SYMBOLS ON THE BATTERY PACK



li-ion

Batteries contain Li-ion, waste batteries should be sorted for eco-friendly. Do not dispose of waste batteries as unsorted municipal waste.



Do not throw in water.



Do not throw on fire.



Do not subject the battery to strong sunlight over long periods and do not leave it on a heater (max.45°C).




Do not dispose of batteries. Return exhausted batteries to your local collection or recycling point.

SAFETY INFORMATION

Please read these instructions fully before operating or maintaining your machine

GENERAL SAFETY

GENERAL POWER TOOL SAFETY

 **WARNING** Read all safety warnings and all instructions. Failure to follow the warnings and instructions may result in electric shock, fire and/or serious injury.

Save all warnings and instructions for future reference.

The term “power tool” in the warnings refers to your mains-operated (corded) power tool or battery-operated (cordless) power tool.

Work area safety

- Keep work area clean and well lit. Cluttered or dark areas invite accidents.
- Do not operate power tools in explosive atmospheres, such as in the presence of flammable liquids, gases

or dust. Power tools create sparks which may ignite the dust or fumes.

- Keep children and bystanders away while operating a power tool. Distractions can cause you to lose control.

Electrical safety

- Power tool plugs must match the outlet. Never modify the plug in any way. Do not use any adapter plugs with earthed (grounded) power tools. Unmodified plugs and matching outlets will reduce risk of electric shock.
- Avoid body contact with earthed or grounded surfaces, such as pipes, radiators, ranges and refrigerators. There is an increased risk of electric shock if your body is earthed or grounded.
- Do not expose power

SAFETY INFORMATION

Please read these instructions fully before operating or maintaining your machine

tools to rain or wet conditions. Water entering a power tool will increase the risk of electric shock.

- Do not abuse the cord. Never use the cord for carrying, pulling or unplugging the power tool. Keep cord away from heat, oil, sharp edges or moving parts. Damaged or entangled cords increase the risk of electric shock.
- When operating a power tool outdoors, use an extension cord suitable for outdoor use. Use of a cord suitable for outdoor use reduces the risk of electric shock.
- If operating a power tool in a damp location is unavoidable, use a residual current device (RCD) protected supply. Use of an RCD reduces the risk of electric shock.

NOTE: The term “residual current device(RCD)”

may be replaced by the term “ground fault circuit interrupter (GFCI)” or “earth leakage circuit breaker(ELCB)”.

Personal safety

- Stay alert, watch what you are doing and use common sense when operating a power tool. Do not use a power tool while you are tired or under the influence of drugs, alcohol or medication. A moment of inattention while operating power tools may result in serious personal injury.
- Use personal protective equipment. Always wear eye protection. Protective equipment such as dust mask, non-skid safety shoes, hard hat or hearing protection used for appropriate conditions will reduce personal injuries.
- Prevent unintentional starting. Ensure the switch

SAFETY INFORMATION

Please read these instructions fully before operating or maintaining your machine

is in the off-position before connecting to power source and/or battery pack, picking up or carrying the tool. Carrying power tools with your finger on the switch or energising power tools that have the switch on invites accidents.

- Remove any adjusting key or wrench before turning the power tool on. A wrench or a key left attached to a rotating part of the power tool may result in personal injury.
- Do not overreach. Keep proper footing and balance at all times. This enables better control of the power tool in unexpected situations.
- Dress properly. Do not wear loose clothing or jewellery. Keep your hair, clothing and gloves away from moving parts. Loose clothes, jewellery or long hair can be caught in moving parts.

- If devices are provided for the connection of dust extraction and collection facilities, ensure these are connected and properly used. Use of dust collection can reduce dust-related hazards.

Power tool use and care

- Do not force the power tool. Use the correct power tool for your application. The correct power tool will do the job better and safer at the rate for which it was designed.
- Do not use the power tool if the switch does not turn it on and off. Any power tool that cannot be controlled with the switch is dangerous and must be repaired.
- Disconnect the plug from the power source and/or the battery pack from the power tool before making any adjustments, changing accessories,

SAFETY INFORMATION

Please read these instructions fully before operating or maintaining your machine

or storing power tools. Such preventive safety measures reduce the risk of starting the power tool accidentally.

- Store idle power tools out of the reach of children and do not allow persons unfamiliar with the power tool or these instructions to operate the power tool. Power tools can be dangerous in the hands of untrained users.
- Maintain power tools. Check for misalignment or binding of moving parts, breakage of parts and any other condition that may affect the power tool's operation. If damaged, have the power tool repaired before use. Many accidents are caused by poorly maintained power tools.
- Keep cutting tools sharp and clean. Properly maintained cutting tools with sharp cutting edges are less likely to bind and

are easier to control.

- Use the power tool, accessories and tool bits etc. in accordance with these instructions, taking into account the working conditions and the work to be performed. Use of the power tool for operations different from those intended could result in a hazardous situation.

Battery tool use and care

- Recharge only with the charger specified by the manufacturer. A charger that is suitable for one type of battery pack may create a risk of fire when used with another battery pack.
- Use power tools only with specifically designated battery packs. Use of any other battery packs may create a risk of injury and fire.
- When battery pack is not in use, keep it away from other metal objects, like

SAFETY INFORMATION

Please read these instructions fully before operating or maintaining your machine

paperclips, coins, keys, nails, screws or other small metal objects, that can make a connection from one terminal to another. Shorting the battery terminals together may cause burns or a fire.

- Under abusive conditions, liquid may be ejected from the battery; avoid contact with skin. If contact accidentally occurs, flush with water. If liquid contacts eyes, additionally seek medical help. Liquid ejected from the battery may cause irritation or burns.

Service

a) Have your power tool serviced by a qualified repair person using only identical replacement parts. This will ensure that the safety of the power tool is maintained.

ADDITIONAL SAFETY INSTRUCTIONS FOR BATTERIES AND CHARGERS

SAFETY WARNINGS FOR BATTERY PACK



WARNING! Read all safety warnings and all instructions. Failure to follow the warnings and instructions may result in electric shock, fire and/or serious injury.

Save all warnings and instructions for future reference.

- Do not dismantle, open or shred cells or battery pack.
- Do not short-circuit a battery pack. Do not store battery packs haphazardly in a box or drawer where they may short circuit each other or be short-circuited by conductive materials. When battery pack is not in use, keep it away from other metal objects, like paper clips, coins, keys,

SAFETY INFORMATION

Please read these instructions fully before operating or maintaining your machine

nails, screws or other small metal objects, that can make a connection from one terminal to another. Shorting the battery terminals together may cause burns or a fire.

- Do not expose battery pack to heat or fire. Avoid storage in direct sunlight.
 - Do not subject battery pack to mechanical shock.
 - In the event of battery leaking, do not allow the liquid to come into contact with the skin or eyes. If contact has been made, wash the affected area with copious amounts of water and seek medical advice.
 - Seek medical advice immediately if a cell or battery pack has been swallowed.
 - Keep battery pack clean and dry.
 - Wipe the battery pack terminals with a clean dry cloth if they become dirty.
- Battery pack needs to be fully charged before first use. Always refer to this instructions and use the correct charging procedure.
 - Do not leave battery pack on charge when not in use.
 - After extended periods of storage, it may be necessary to charge and discharge the battery pack several times to obtain maximum performance.
 - Battery pack will give its best performance when it is operated at normal room temperature ($20\text{ }^{\circ}\text{C} \pm 5\text{ }^{\circ}\text{C}$).
 - When disposing of battery packs, keep battery packs of different electrochemical systems separate from each other.
 - Recharge only with the charger specified by manufacturer. Do not use any charger other than that specifically

SAFETY INFORMATION

Please read these instructions fully before operating or maintaining your machine

provided for use with the equipment. A charger that is suitable for one type of battery pack may create a risk of fire when used with another battery pack.

- Do not use any battery pack which is not designed for use with the equipment.
- Keep battery pack out of the reach of children.
- Retain the original product literature for future reference.
- Remove the battery from the equipment when not in use.
- Dispose of properly.

SAFETY WARNINGS FOR YOUR BATTERY CHARGER



WARNING! Read all safety warnings and all instructions. Failure to follow the warnings and instructions may result in electric shock,

fire and/or serious injury.

Save all warnings and instructions for future reference.

- This appliance can be used by children aged from 8 years and above and persons with reduced physical, sensory or mental capabilities or lack of experience and knowledge if they have been given supervision or instruction concerning use of the appliance in a safe way and understand the hazards involved.
- Children should be supervised to ensure that they do not play with the appliance.

Additional Safety Instructions For Your Battery Charger

- Before charging, read the instructions.
- After charging, disconnect

SAFETY INFORMATION

Please read these instructions fully before operating or maintaining your machine

the battery charger from the supply mains. Then remove the chassis connection and then the battery connection.

- Do not charge a leaking battery.
- Do not use chargers for works other than those for which they are designed.
- Before charging, ensure your charger is matching the local AC supply.
- For indoor use, do not expose to rain.
- The charging device must be protected from moisture.
- Do not use the charging device outdoors.
- Do not short out the contacts of battery or charger.
- Respect the polarity “+/-“ when charging.
- Do not open the unit and keep out of the reach of children.

- Do not charge the batteries of other manufactures or ill-suited models.
- Ensure that the connection between the battery charger and battery is correctly positioned and is not obstructed by foreign bodies.
- Keep battery charger's slots free of foreign objects and protect against dirt and humidity. Store in a dry and frost-free place.
- When charging batteries, ensure that the battery charger is in a well-ventilated area and away from inflammable materials. Batteries can get hot during charging. Do not overcharge any batteries. Ensure that batteries and chargers are not left unsupervised while charging.
- Do not recharge non-rechargeable batteries, as they can overheat and

SAFETY INFORMATION

Please read these instructions fully before operating or maintaining your machine

break.

- Longer life and better performance can be obtained if the battery pack is charged when the air temperature is between 18°C and 24°C. Do not charge the battery pack in air temperatures below 0°C, or above 45°C. This is important as it can prevent serious damage to the battery pack.
- Charge only battery pack of the same model provided by manufacturer and of models recommended by manufacturer.

ADDITIONAL SAFETY INSTRUCTIONS FOR HEDGE TRIMMERS

- Keep all parts of the body away from the cutter blade. Do not remove cut material or hold material to be cut when blades are moving. Make sure

the switch is off when clearing jammed material. A moment of inattention while operating the hedge trimmer may result in serious personal injury.

- Carry the hedge trimmer by the handle with the cutter blade stopped. When transporting or storing the hedge trimmer always fit the cutting device cover. Proper handling of the hedge trimmer will reduce possible personal injury from the cutting blades.
- Keep cable away from cutting area. During operation the cable may be hidden in shrubs and can be accidentally cut by the blade.
- Advice to check the hedge for foreign objects, e.g. wire fences.
- Hold the hedge trimmer properly, e.g. with both hands if two handles are provided

SAFETY INFORMATION

Please read these instructions fully before operating or maintaining your machine

- Hold the power tool by insulated gripping surfaces only, because the cutting blade may contact hidden wiring. Cutting blades contacting a “live” wire may make exposed metal parts of the power tool “live” and could give the operator an electric shock.
- Check cutting blades regularly for damage, and if damaged repair immediately; check cable for damage before starting work and replace if necessary.
- Always ensure all handles and guards are fitted when using the tool.
- Do not use the machine when it is raining or on wet hedges.
- Never allow children to use the tool.
- Choose a stable and safe position, especially on steps. When operating the machine take great care and always hold it firmly with both hands.
- Make yourself familiar with your working area and be alert for possible hazards, which you might not hear due to the motor noise.
- Never attempt to use a damaged or incomplete machine or one fitted with an unauthorized modification.
- Keep cutting tools sharp and clean. Properly maintained cutting tools with sharp cutting edges are less likely to bind and are easier to control.
- Use the power tool, accessories and tool bits etc. in accordance with these instructions, taking into account the working conditions and the work to be performed. Use of the power tool for operations different from those intended could result in a hazardous situation
- Only use original spare

SAFETY INFORMATION

Please read these instructions fully before operating or maintaining your machine

parts and accessories supplied with the machine or recommended by the manufacturer.

- Always wear suitable clothing; anti-slip shoes and close-fitting garments, that cannot get caught, however do not restrict your movement. Tie long hair back or protect with a hair net. Do not wear bracelets or long jewelry which could get entangled in moving parts.
- Use personal protective equipment. Always wear eye protection. Protective equipment such as dust mask, non-skid safety shoes, hard hat, or hearing protection used for appropriate conditions will reduce personal injuries.
- Within the working area, the person using the power tool is responsible for any damaged or injury sustained by third parties or their property, which has been caused by the

power tool. Watch your working area and do not allow third persons or animals to be around.

- When operating the power tool take great care and always hold it firmly with both hands. Adopt a stable and safe position, especially on slopes.
- Never touch the unprotected blades and never carry the machine taking hold of the blades.

MAINTENANCE AND STORAGE SAFETY

- Disconnect the product from the power supply (i.e. remove the plug from the charger supply or the battery pack) and check for damage after use.
- Disconnect the plug from the power source and/ or the battery pack from the power tool before making any adjustments,

SAFETY INFORMATION

Please read these instructions fully before operating or maintaining your machine

changing accessories, or storing power tools. Such preventive safety measures reduce the risk of starting the power tool accidentally.

- Inspect and maintain the product regularly. Have the product repaired only by an authorised service centre or similarly qualified specialist.
- Store idle power tools out of the reach of children and do not allow persons unfamiliar with the power tool or these instructions to operate the power tool.
- Power tools are dangerous in the hands of untrained users.

INTENDED USE

This cordless hedge trimmer is designed for cutting and trimming of hedges, bushes and ornamental shrubs in the domestic environment.

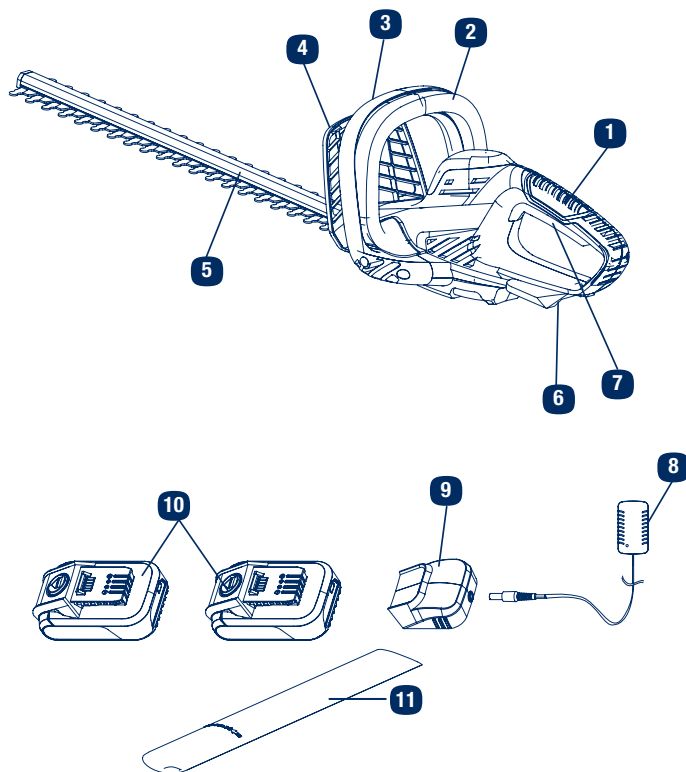
For safety reasons it is essential to read the entire instruction manual before first operation and to observe all the instructions therein.

Any use of the machine that deviates from its intended use and is not included in these instructions is considered unauthorised use and relieves the manufacturer from his or her legal liability.

BOX CONTENTS

PARTS

- | | | | |
|---|---------------------|----|-----------------|
| 1 | Main handle | 7 | Trigger switch |
| 2 | Safety switch | 8 | Charger |
| 3 | Front handle | 9 | Charger base |
| 4 | Hand guard | 10 | Battery pack x2 |
| 5 | Cutting blade | 11 | Blade sheath |
| 6 | Battery pack holder | | |



If there are any parts missing, please call the customer helpline on **0345 605 2067**

ASSEMBLY

1 Unpacking

- i. Unpack all parts and lay them on a flat, stable surface.
- ii. Remove all packing materials and shipping devices if applicable.
- iii. Make sure the delivery contents are complete and free of any damage. If you find that parts are missing or show damage, do not use the product but contact the aftersales service within 28 days of purchase. Using an incomplete or damaged product represents a hazard to people and property.
- iv. Ensure that you have all the accessories and tools needed for assembly and operation. This also includes suitable personal protective equipment.

2 Check battery capacity

Push the power indicator button (A), the remaining percentage of battery capacity will show on screen.

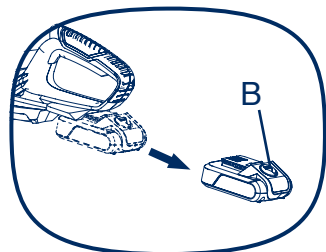
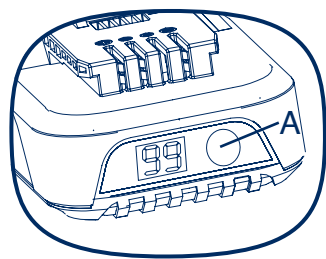
FU means 100% fully charged.

Insert the battery to product

- i. Keep the battery pack in line with the holder on the device.
- ii. Push it forward until it reaches the bottom. Before starting make sure the battery pack is firmly locked in place.

Remove the battery from product

- i. Press the battery pack release button (B) downward,
- ii. Pull the battery pack towards operator, then remove it.





Attention! The battery cannot be charged immediately after use, it should cool off for a period of time. The LED lights switching from green to red means it can be charged.

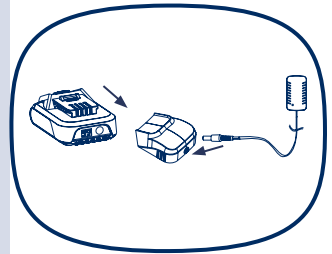
3 Charging the battery



NOTE: This battery pack has been shipped in a low charge condition. It should be fully charged before first use. Make sure the main voltage is the same as rating label which located on the charger.

WARNING!

The charger and battery pack are specifically designed to work together so do not attempt to use any other devices. Never insert or allow metallic objects into your charger or battery pack connections because an electrical failure and hazard will occur. The battery needs to be charged before first use and whenever it fails to produce sufficient power on jobs that were easily done before.



ASSEMBLY

This product comes with a lithium ion battery pack. Lithium ion batteries don't lose charge when not in use, and don't lose charging capacity overtime. Never the less it is best practice to charge the battery when empty or insufficient to do the job.

Connect charger with charger base, and then plug the charger into mains.

1. Plug the charger into an appropriate AC power outlet. The LED lights green to tell you that the charger is ready for use.
 2. Slide the charger base (9) into the battery pack(10), make sure the charger base is fully seated in the battery pack. The LED lights up red to tell you that the battery pack is on charge.
 3. The battery pack will be fully charged in 1 hour. And the LED lights up green again to tell you that the battery pack is fully charged.
-
-

Important charging notes

Longest life and best performance can be obtained if the battery pack is charged at room temperature between 18-24°C. Do not charge the battery pack in a very low or very high air temperature. This is important and will prevent serious damage to the battery pack.

- When using your tool continuously, the batteries in your battery pack will become hot. You should let a hot battery pack cool down for approximately 30 minutes before attempting to recharge.
 - The charger and battery pack may become warm to touch while charging. This is a normal condition, and does not indicate a problem.
 - Use the charger in normal room temperatures whenever possible. To prevent overheating, do not cover the charger and do not charge battery packs in direct sunlight or near heat sources.
 - If the battery pack does not charge properly;
(1).Check the main socket by plugging in a lamp or other
-

appliance.

(2). Move the charger and battery pack to a location where the surrounding air temperature is approximately 18-24°C.

(3). If charging problems persist, take or send the tool, battery pack and charger to your local service center.

- The battery pack should be recharged when it fails to produce sufficient power on jobs which were easily done previously. DO NOT CONTINUE to use under these conditions. Follow the charging procedure. You may also charge a partially used pack whenever you desire with no adverse effect on the battery pack.
- Under certain conditions, with the charger plugged in to the power supply, the exposed charging contacts inside the charger can be shorted by foreign material. Foreign materials of a conductive nature such as, but no limited to, steel wool, aluminum foil, or any buildup of metallic particles should be kept away from charger cavities. Always unplug the charger from the power supply when there is no battery pack in the cavity. Unplug charger before attempting to clean.
- Do not immerse charger in water or any other liquid.



WARNING!

Don't allow any liquid to get inside charger. Electric shock may result. To facilitate the cooling of the battery pack after use, avoid placing the charger or battery pack in a warm environment such as in a metal shed, or an un-insulated trailer.



CAUTION!

Never attempt to open the battery pack for any reason. If the plastic housing of the battery pack breaks or cracks, return to a service center for recycling; do not put it into further use.

OPERATION

General operation

- i. Check the product, its battery pack and charger as well as accessories for damage before each use. Do not use the product if it is damaged or shows wear.
 - ii. Double check that accessories are properly fixed.
 - iii. Always hold the product on its handles. Keep the handles dry to ensure safe support.
-

Switching on/off

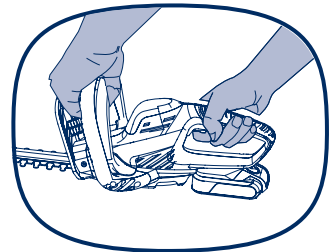
NOTE: Hold the hedge trimmer away from yourself using both hands. Stand in a secure and stable position.

To switch on

Pull up the trigger switch of the rear handle and, with your other hand, pull the safety switch simultaneously.

To switch off

Release the trigger switch or the safety switch.



Trimming times

Green leaf hedges	June to October
Evergreens	April and August
Conifers and other fast growing shrubs	every 6 - 8 weeks

OPERATION

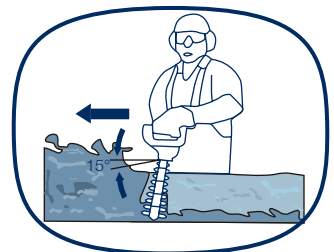
NOTE: Only operate the product during reasonable hours – not early in the morning, late at night or on weekends/ public holidays when people might be disturbed. Please check local restrictions.

Trimming

- i. Cut and remove branches exceeding the cutting capacity of this product using a proper pruner before operation.
- ii. Move the cutting device lightly through the surface to be cut in a sweeping motion following the shape of the hedge or shrub.
- iii. A slight tilt downwards of the cutting device in the direction of motion is recommended for optimum cutting performance.
- iv. Do not to rush and do not attempt to cut too much with one stroke of the cutting device.
- v. First cut both sides from the bottom cutting upwards to the top. This will prevent any of the trimmings falling into the path of the area still to be cut.



- vi. After cutting the sides proceed to the top. Try to keep the cutting device angled at approximately 15° to the cutting surface.



OPERATION

- vii. Cut in a number of stages if the area being cut is particularly long to achieve a better result; smaller trimmings will allow for easy composting.

NOTE: When shaping it is advisable to achieve a trapezoidal shape. A trapezoidal cut corresponds to the natural growth of plants and results in optimal hedge growth, as it will expose more light to the lower end of the hedge.

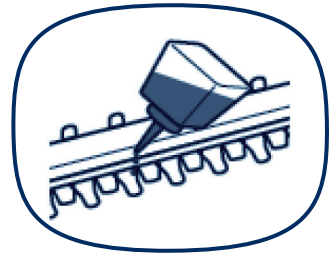
MAINTENANCE

This product does not contain any parts that can be repaired by the consumer. Contact an authorised service centre or a similarly qualified person to have it checked and repaired.



WARNING! Always switch the product off, Pull out the battery pack and let the product cool down before performing inspection, maintenance and cleaning work!

- Regular and proper cleaning will help ensure safe use and prolong the life of the product.
- Inspect the product before each use for worn and damaged parts. Do not operate it if you find broken and worn parts.
- Lubricate the internal surfaces of the blades with gear grease, after each use.



General cleaning

- i. Switch the product off, disconnect it from the power supply and let it cool down.
- ii. Check, clean and store the product as described below.
- iii. Clean the product with a damp cloth and pH-neutral soap. Use a brush for areas that are hard to reach.
- iv. In particular clean the air vents after every use with a cloth and brush.
- v. Remove stubborn dirt with high pressure air (max. 3 bar).

NOTE: Do not use chemical, alkaline, abrasive or other aggressive detergents or disinfectants to clean this product as they might be harmful to its surfaces.

MAINTENANCE

Cleaning the blades



**WARNING! Wear safety gloves when working on blades and close to it! Use appropriate tools to remove debris, e.g. a brush or wooden stick! Never use your bare hands!
Always use original spare parts for replacement.**

- i. Keep the blades clean and free of debris. Remove trimmings.
 - ii. Apply a small amount of suitable lubricant, like gear grease, on the cutting device to retain a good cutting performance.
-
-

Repair

This product does not contain any parts that can be repaired by the consumer. Contact the after sales support if you have any queries.

Storage

- i. Clean the product as described above.
 - ii. Attach the blade cover.
 - iii. Store the product and its accessories in a dry, frost-free place.
 - iv. Always store the product in a place that is inaccessible to children. The ideal storage temperature is between 10 - 30°C.
 - v. We recommend using the original package for storage or covering the product with a suitable cloth or enclosure to protect it against dust.
-

MAINTENANCE

Transportation

- i. Switch the product off and disconnect from power supply.
 - ii. Attach the blade cover.
 - iii. Always carry the product by its handles/gripping surfaces.
 - iv. Protect the product from any heavy impact or strong vibrations which may occur during transportation in vehicles.
 - v. Secure the product to prevent it from slipping or falling over.
-
-

Recycling and disposal

The product comes in a package that protects it against damage during shipping. Keep the packaging until you are sure that all parts have been delivered and the product is functioning properly. Recycle the packaging afterwards.

Old products are potentially recyclable and do not, therefore, belong in your household waste. You are requested to assist us and our contribution to saving resources and protecting the environment by handing in this product at an equipped collection centre.



TECHNICAL DATA

Model Number	S1851CHX2
Nominal voltage of product with battery	18V $\overline{\text{---}}$
No load speed	1300 /min
Cutting length	510 mm
Tooth gap	16 mm
A weighted sound pressure	79dB(A) K_{PA} : 3dB(A)
A weighted sound power	87.4dB(A) K_{WA} : 3dB(A)
The guaranteed sound power level:	90dB(A)
Net weight	3.1 kg
Vibrations	2 m/s ² K=1.5 m/s ²
Charger	
Model no.	SMVCH001212000B
Input voltage & current	230-240V~ 50/60Hz, 50W
Output voltage & current	21V d.c 2A
Charger time	Approx.60min
Protection class	Class II
Battery pack	
Model no.	B0P-SP02-20-15A
Battery type	Lithium-Ion
Battery capacity	1.5Ah
Battery pack voltage	18V d.c.

TECHNICAL DATA

The sound values have been determined according to noise test code given in EN 69745-1, using the basic standards EN ISO 11094 and EN ISO 3744.

The sound intensity level for the operator may exceed 80dB(A) and ear protection measures are necessary.

That the declared vibration value has been measured in accordance with a standard test method (according to EN 60745-1) and may be used for comparing one tool with another. The declared vibration value may also be used in a preliminary assessment of exposure.

WARNING! The vibration emission during actual use of the power tool can differ from the declared total value depending on the ways in which the tool is used.

Of the need to identify safety measures to protect the operator that are based on an estimation of exposure in the actual conditions of use(taking account of all parts of the operating cycle such as the times when the tool is switched off and when it is running idle in addition to the trigger time).

Noise and vibration values were determined according to the standards and stipulations mentioned in the declaration of conformity. Technical and optical changes can be carried out in the course of further development without notice. All dimensions, references and information of this instruction manual are therefore without guarantee. Legal claims, which are made on the basis of the instruction manual, cannot thus be considered as valid.

Part number	Accessories
CHT-13-1	Blade sheath
CGT-40	Safety guard
CGT-50	Charger
01704ZA	Battery Pack

TROUBLESHOOTING

Suspected malfunctions are often due to causes that the user can fix themselves. Therefore, check the product using this section. In most cases the problem can be solved quickly by user.



WARNING! Only perform the steps described within these instructions! all further inspection, maintenance and repair work must be performed by an authorised service centre or a similarly qualified specialist if you cannot solve the problem yourself!

Gloves and appropriate protective clothing must be worn when performing these instructions.

Fault	Possible Cause	Solution
Product is not running.	<ul style="list-style-type: none">- Battery discharged- Battery pack does not sit in its place correctly- Device defective	<ul style="list-style-type: none">- Charge rechargeable battery- Install the battery pack once again- Contact service centre
Unsatisfactory cutting result	<ul style="list-style-type: none">- The branches exceeding the tooth gap of the blades- Low battery power	<ul style="list-style-type: none">- Only cut branches within the limits- Charge the battery- Contact service centre
Excessive vibration/ noise	<ul style="list-style-type: none">- Some bolts/nuts may have loosened	<ul style="list-style-type: none">- Contact service centre

WARRANTY

If your device develops a fault, please don't hesitate to contact our customer service department on 0345 605 2067, the majority of problems can be solved directly on the phone.

1. These warranty terms cover additional warranty rights and do not affect your statutory warranty rights. All our products are covered by a 3 year manufacturer warranty.
2. Claims must be accompanied by proof of purchase. This must be in the form of a Sales receipt or bank statement and must show that the product has been purchased within the warranty period as described under point 1, from the retailer that it was originally bought from. Please keep your receipt safe or staple it to the back of this manual for future reference.
3. Our warranty covers problems caused by material or manufacturing defects, and will result in the repair of these defects or replacement of the device with a like for like or similar article.
4. Our devices have not been designed for commercial, trade or industrial applications, any signs of use of the equipment in these application or equivalent activities, invalidates the warranty.
5. The following are also excluded from our warranty:
 - A. Faults due to accidents, customer misuse or unauthorised repairs
 - B. Consumable parts such as batteries, chargers, blades, quick release locks, extension cables, wheels, grass bags and other accessories that are compatible with the product.
 - C. Failure due to lack of routine maintenance.
 - D. Failure as a result of not using the equipment in accordance with the manual and safety instructions
 - E. The adjustment of cables, drive gears, or blades.

Warranty claims should be submitted before the end of the warranty period, see point 1, but a paid service exists for repairs commissioned after this period. The original warranty period remains applicable to the device even if repairs are carried out or parts are replaced.

In such cases, the work performed or parts fitted will not result in an extension of the warranty period, and no new warranty will become active for the work performed or parts fitted.

If you have any problems or questions concerning your garden power tool, please contact our after sales service at 0345 605 2067.