

User Guide

Video Doorbell (2nd Gen)



ring

1. Set up your Video Doorbell.

Download the Ring app.

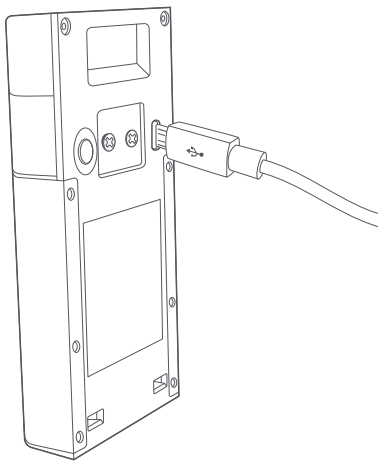
The Ring app walks you through setting up and managing your Video Doorbell.

Search for “Ring” in one of the app stores below, or visit ring.com/app



Fully charge your Video Doorbell.

Plug it into a USB power source with the included cable. Once the light ring is fully lit, it's ready to use.



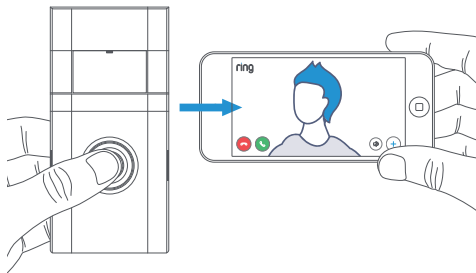
Set up your Video Doorbell near your wifi router.

In the Ring app, select **Set Up a Device**.

When prompted, select **Doorbells**, and follow the in-app instructions.

Try it out.

After setup, push the button on the front of your Video Doorbell to see video from the camera in the Ring app.



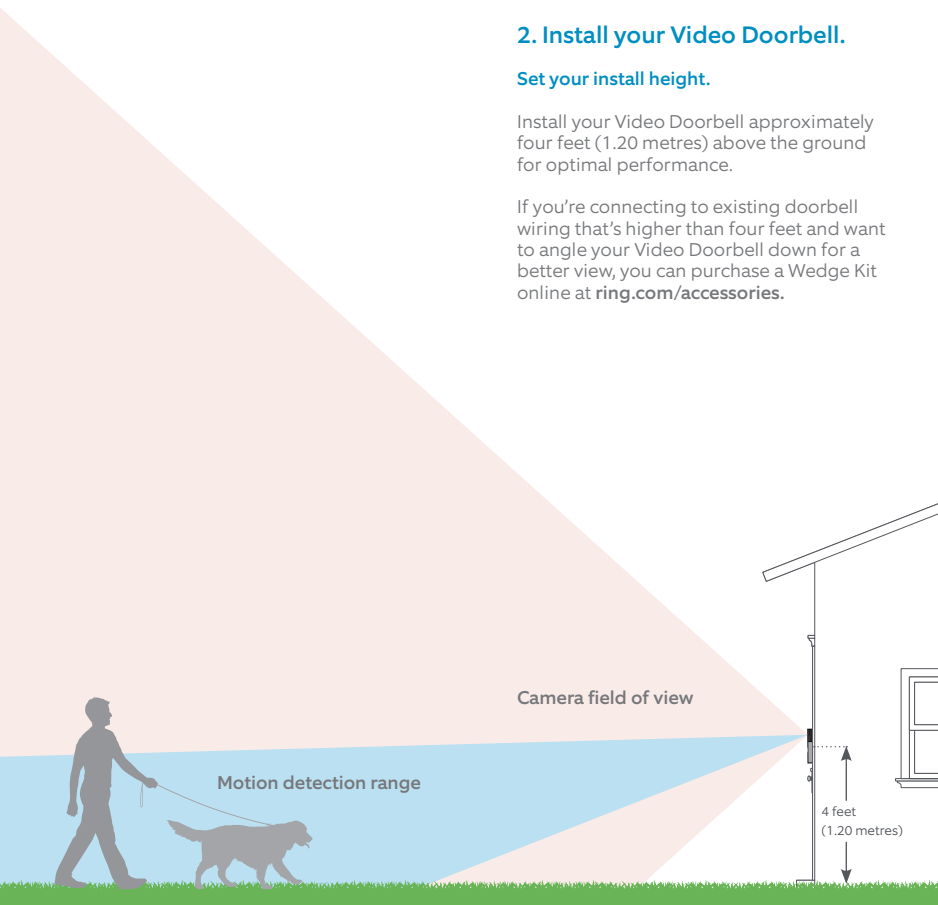
If you have problems with video quality after installation, you may need to move your router closer to your door, or add a Ring Chime Pro. Learn more at: ring.com/chime-pro

2. Install your Video Doorbell.

Set your install height.

Install your Video Doorbell approximately four feet (1.20 metres) above the ground for optimal performance.

If you're connecting to existing doorbell wiring that's higher than four feet and want to angle your Video Doorbell down for a better view, you can purchase a Wedge Kit online at ring.com/accessories.



Remove your existing doorbell (optional).

If replacing an existing doorbell, shut off power at the breaker. Then remove it from the wall and disconnect the wires.

Your Video Doorbell is compatible with doorbell systems supplying 8-24 volts AC at 50 or 60Hz, 40VA max.

Do you have an in-home chime?

The chime can ring when the button on your Video Doorbell is pressed. Just follow the in-app instructions during setup.

Don't have an in-home chime?

If you see the “No In-Home Chime” button during setup, be sure to press it.

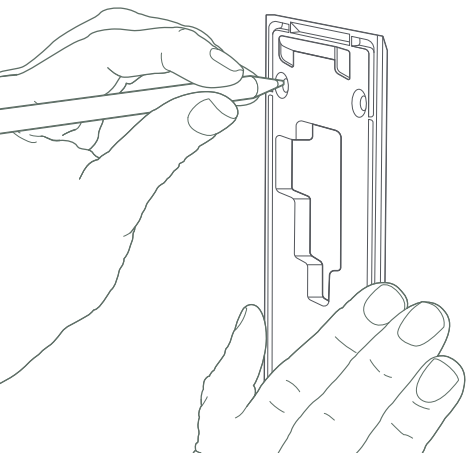
NO IN-HOME CHIME

To change your wiring settings after setup, go to Device Settings > Chime Connection.

Also, consider purchasing a Ring Chime or Chime Pro, which allows you to hear Ring alerts from anywhere in your home.

Mark the screw holes.

Use the bracket as a template to mark the four corner holes. The recommended install height is 4 feet above the ground.



Install the anchors (optional).

If installing on stucco, brick, or concrete, mark 4 drill holes. Use the provided masonry drill bit to drill holes in your wall, then insert the included anchors.

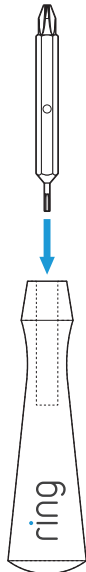
If you're installing on wood, skip this step.

Install the mounting bracket.

Use the phillips head side of the Ring screwdriver to screw in the mounting bracket.

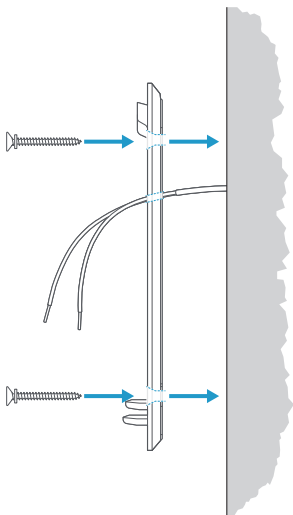


Keep the orange screwdriver handy. You'll need it to take your Video Doorbell off the wall for charging.



If you're wiring your Video Doorbell, feed your doorbell wires through the hole in the mounting bracket first.

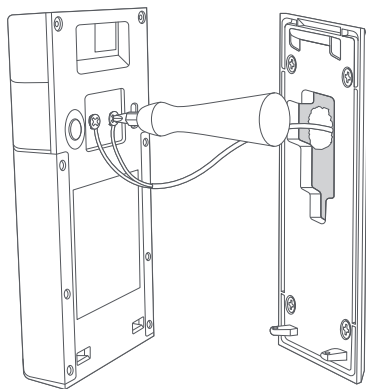
Drive the screws into your wall (or into the anchors, if installed) until they are flush with the mounting bracket.



Connect the wires (optional).

Connect the wires coming out of your wall to the screws on the back of your Video Doorbell. Either wire can connect to either screw. The order doesn't matter.

Your Video Doorbell is compatible with doorbell systems supplying 8-24 volts AC, 50mA, at 50 or 60Hz, 40VA max.



If wiring directly to a doorbell transformer, connect a 25 ohm, 50W wirewound resistor in series with one of the doorbell wires to protect your Video Doorbell.

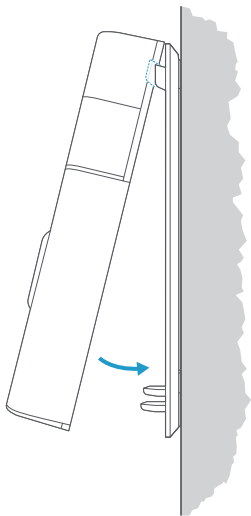


Do not connect to a DC transformer, halogen or lighting transformer, or intercom.

Attach your Video Doorbell to the mounting bracket.

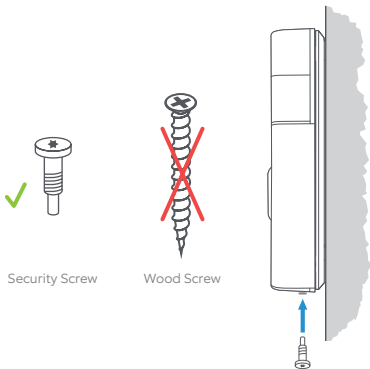
Hook the slot on the rear of your Video Doorbell onto the tab near the top of the mounting bracket.

Then, let the Doorbell pivot down to sit flush on its bracket.



Secure your Video Doorbell.

Use the star-shaped end of the included screwdriver to drive the two security screws into the bottom of your Video Doorbell.



Important!

DO NOT USE any screw other than the included short security screws when securing your Video Doorbell to the bracket.



CAUTION! Using the wrong screw to secure the Video Doorbell could damage the battery and create a potential fire hazard.

Your Video Doorbell is now ready to use.

If you wired in your Video Doorbell, you can now restore power at the breaker.



ring.com/help



+800 87 00 97 81



+01727 26 3045



+800 87 00 9781



+800 87 00 9781



+1 310 929 7085



+61 1 300 205 983



+64 9 887 9871



+52 55 8526 5445



+54 11 5031 9543



+57 1 381 9843



+56 22 405 3059



+507 833 6750

To review your warranty coverage, please visit
www.ring.com/warranty

© 2020 Ring LLC or its affiliates.

Ring and all related marks are trademarks
of Ring LLC or its affiliates.