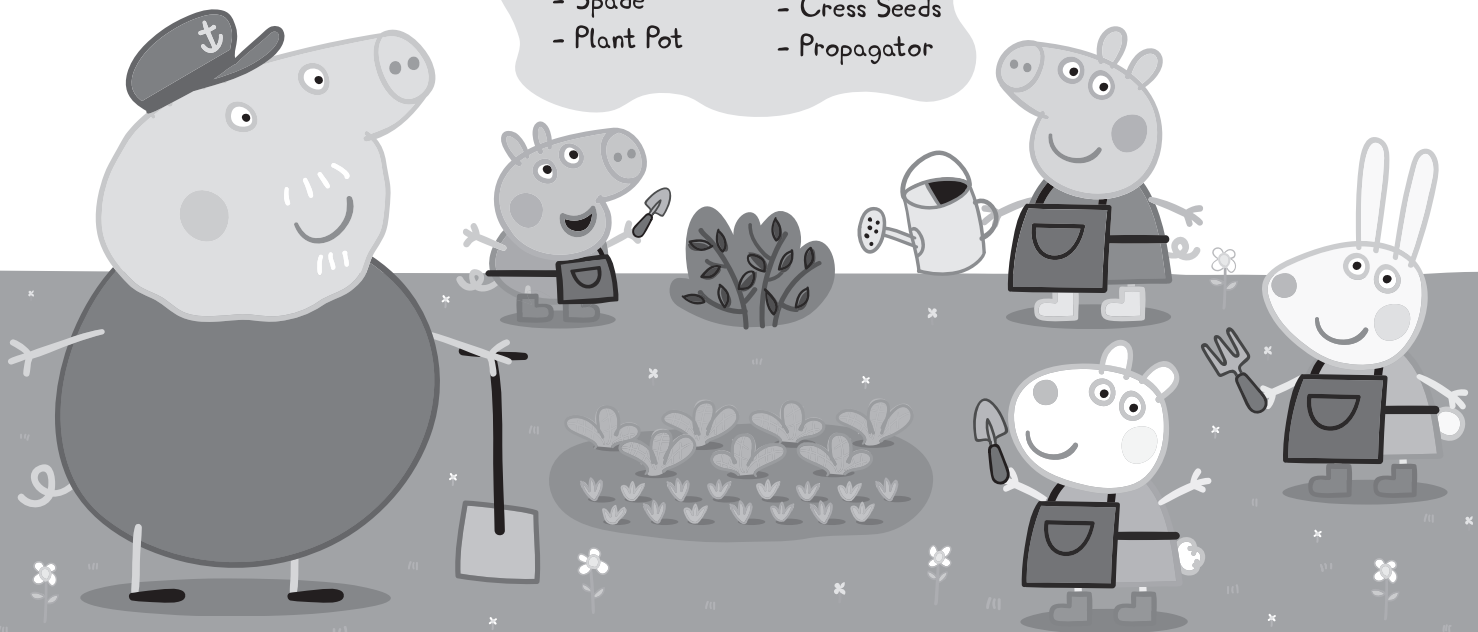


Grow & Play Peppa Pots

Contents:

- Peppa Figure
- Bird
- Spade
- Plant Pot
- Fence
- Tree
- Cress Seeds
- Propagator



4 to collect



Did you know you could help save the planet if you recycle your Peppa Pot wrapper properly? Break down the card parts and the inner plastic part that holds the card parts and pop them in the recycling bins recommended by your local council - make sure you peel off any sticky tape as this can't go in!

Don't throw away the plastic dome as this can be used as a propagator for your plants to help them grow better.

The only non-recycling part is the cellophane wrap, so stick that in with your normal rubbish.



entertainmentOne Official Peppa Pig

Peppa Pig © Astley Baker Davies Ltd/Entertainment One UK Ltd 2003.

WARNING!

For Ages 4 years +

Not suitable for children under 36 months due to small parts that may represent a choking hazard. Read the instructions before use, follow them and keep them for reference.



Authorised Representative in the EU (for the purposes of Toy Safety Directive): Delphic HSE (Europe) B.V., The Base B, Everi van de Beekstraat 104, Schiphol, 1118CN, Netherlands.



www.peppapig.com
www.interplayuk.com
interplay

Designed and manufactured by:

interplay UK Ltd.

Artisan, Hillbottom Road, High Wycombe, Bucks. HP12 4HJ

Please retain our address for future reference.

Copyright © 2020 Interplay UK Ltd.

Made in China.

Product Code PP101 v.1.0 2020



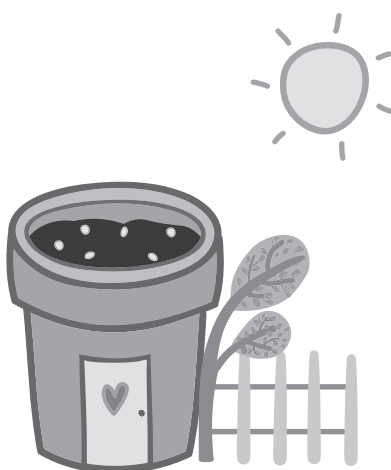
Step One

To start, add soil to the pot. Fill about three-quarters of the pot with some sieved soil or multi-purpose compost, which you can buy from garden centres. The soil or compost needs to be damp. Press the soil down to make a flat surface.



Step Two

For one crop, evenly scatter half of the cress seeds from the packet into the pot and cover with a thin layer of soil or compost. Seal the seed packet back up and store them in a dry and cool place for a second crop.



Step Three

Place the pot on a warm windowsill or similarly in a well-lit position and water regularly.



Step Four

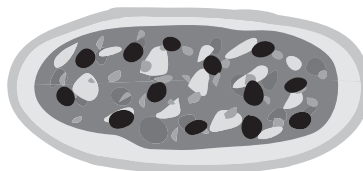
At night when the temperature drops, use the plastic dome as a propagator to keep the seedlings warm and encourage them to grow.



Step Five

Your cress should be ready to eat when it's grown approximately 5cm tall. Cut with scissors (an adult should help you with this).

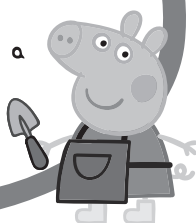
Give them a wash and they are ready to add to your food - like salads or on a pizza!



When the crop has finished, tip the old soil with the roots into a large container and break up any large lumps with a trowel, in order to use again for a second crop. Or alternatively put the roots in your wormery (worms like dead plants very much!) or compost heap, if you have one, and use fresh soil for the second crop.

Top Tip!

If you leave cress for more than 5 weeks, it will start to flower - not that that's a problem as the flowers are edible too!



Growing Lettuce

Once you've finished eating your head of lettuce, cut off the leaves and plant the stalk into the compost, leaving uncovered and sticking out of the soil.

And that's it! Just keep watering and watch as the lettuce leaves start to grow back.

After two weeks you should have new growth and lettuce to put in your salads!

