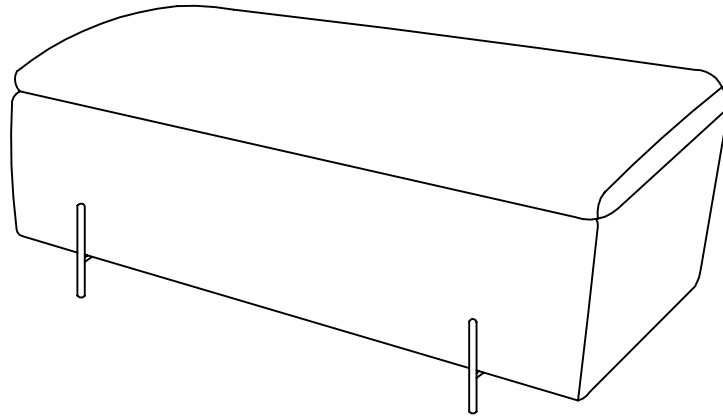


MYSTICA OTTOMAN STORAGE BENCH

Thank you for purchasing the Mystica ottoman storage bench Please read the instructions carefully to ensure safe use of the product.



Size : 980*370*430mm

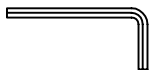
Colour : BLUSH PINK / RUSSET / TEAL / GREY

PLEASE READ this sheet prior to assembly to familiarise yourself with the various stages of construction.

Carefully open the pack supplied and check the contents against the parts and fittings check list. Do not destroy any of the packaging until you are certain that you have all the necessary parts for the assembly.

CAUTION: There are small components used in the construction of this unit. These loose items should be kept away from young children whilst assembling your unit to avoid the danger of choking hazards.

Tools Provided



MYSTICA OTTOMAN STORAGE BENCH

IMPORTANT - READ CAREFULLY - RETAIN THESE INSTRUCTIONS FOR FUTURE REFERENCE.

INFORMATION

- This product is intended for a maximum weight of 110 kg. Do not exceed this weight
- Due to the size of this product we recommend that it is assembled in the room intended for use
- When you are ready to start, make sure that you have the right tools, plenty of space and a clean, dry area for assembly.
- Unwrap all packaging materials and place the components on top of the carton box or on a clean floor to prevent it from scratching.
- Check the pack and make sure you have all the parts listed.
- Ensure that this product is fully assembled as illustrated before use.
- Check all screws or bolts are tightened and inspect regularly
- Tools included.

WARNINGS

- This product should only be used on firm, level ground.
- Keep small parts out of reach of children.
- Make sure the legs remain in contact with the ground.
- Do not use power tools to construct this product.
- Do not tighten screws until fully assembled.
- Do not over tighten screws or bolts.
- Do not use this product if parts are missing, damaged or worn.
- Do not stand on the product.

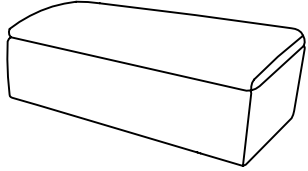
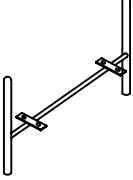
CARE INFORMATION

- Never use scourers, abrasives or chemical cleaners
- To clean wipe with a sponge and warm soapy water. Do not use solvent based cleaners or detergents as they can bleach or damage the product

MYSTICA OTTOMAN STORAGE BENCH

Parts

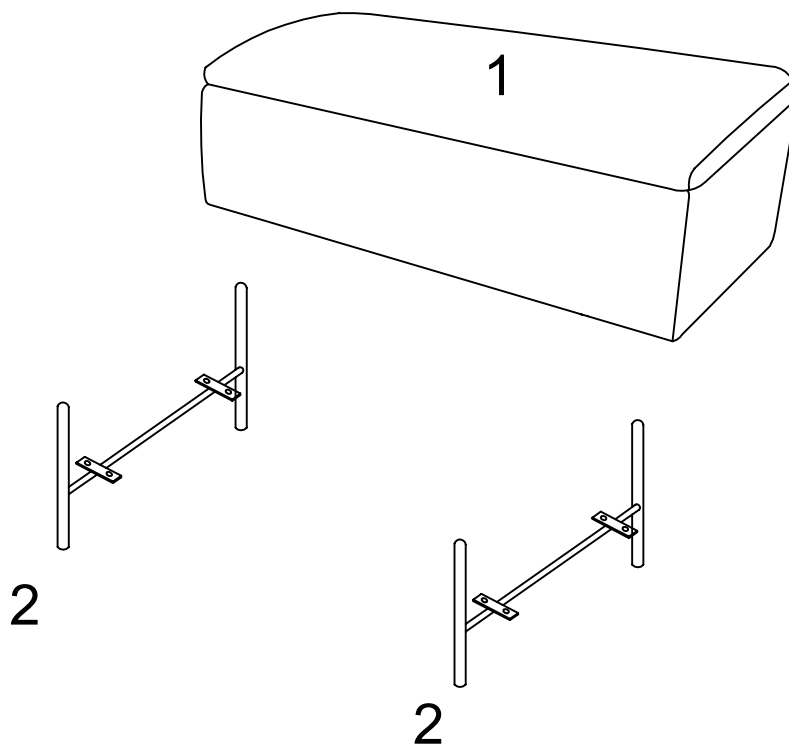
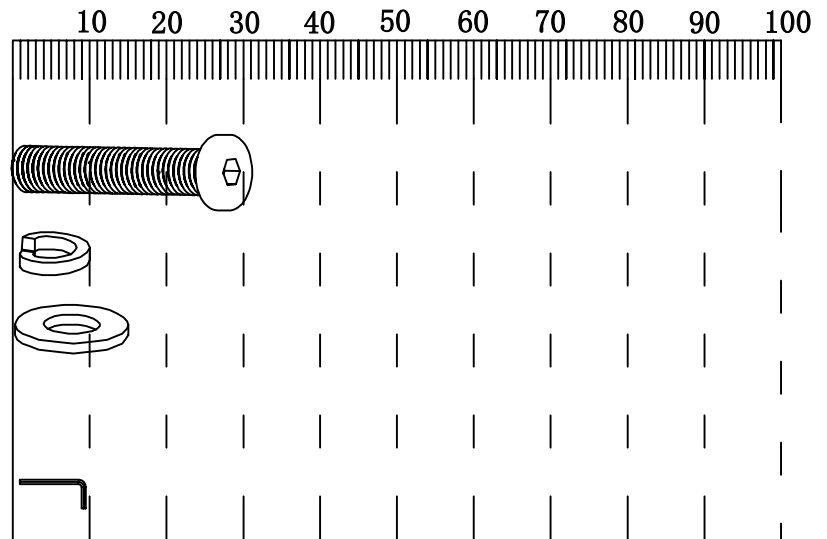
Please check the pack contents before assembling the product. If any components are missing, please contact your retailer. The fittings pack contains small items that should be kept away from small children.

1 	2 	
OTTOMAN 1PC CARTON 1 OF 1	LEGS 2PCS CARTON 1 OF 1	

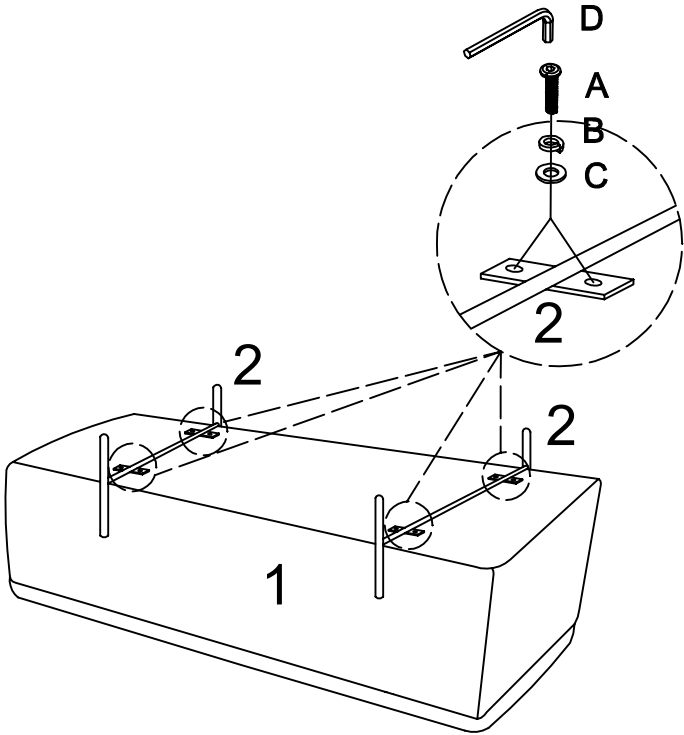
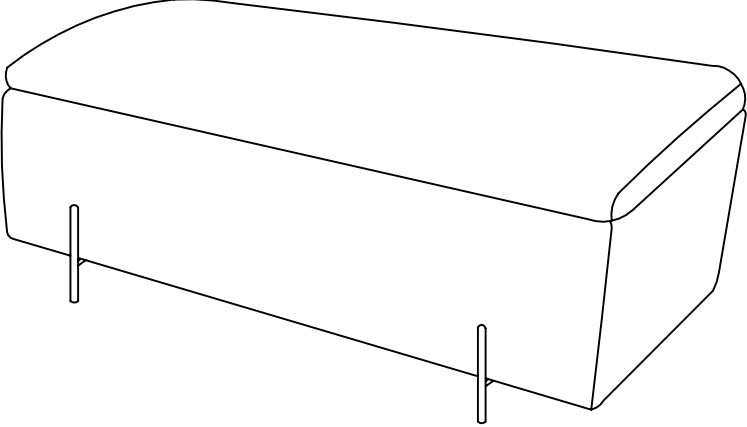
MYSTICA OTTOMAN STORAGE BENCH

Fixings(to scale)

Ref	Dimensions	Qty
A	Bolt-1/4*25mm	8
B	Spring Washer*1/4	8
C	Washer*1/4	8
(Not to scale)		
D	4MM Allen Key	1



MYSTICA OTTOMAN STORAGE BENCH

STEP 1	Parts Required
 <p>The diagram illustrates the first step of assembly. It shows a perspective view of the ottoman base (labeled '1') with four leg attachment points. Two legs (labeled '2') are shown being inserted into these points. A circular inset provides a detailed view of the leg attachment mechanism. In this inset, a leg (2) is being secured to the base. The assembly consists of a screw (A) passing through the leg and base, followed by a washer (B) and a nut (C). An L-bracket (D) is also shown, which is used to secure the leg to the base.</p>	<p>2.LEGS X 2 A X 8 B X 8 C X 8 D X 1</p>
<p>COMPLETE</p>  <p>The diagram shows the completed ottoman storage bench. It is a rectangular, upholstered ottoman with a curved top edge. Four legs are attached to the bottom corners, providing a stable base for the ottoman.</p>	