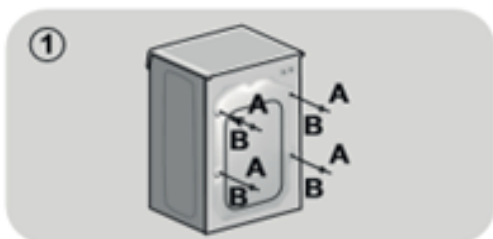


INSTALLATION STEPS



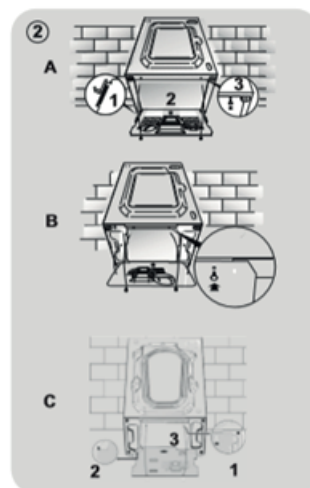
STEP ONE

Release the power cable and drain hose from the securing clip at the rear of the machine.

Remove the **2** or **4** transit screws (**A**) on the back and remove the **2** or **4** flat washers, rubber bungs & plastic spacer tubes (**B**) as illustrated in (**fig 1**).



INSTALLATION STEPS



STEP TWO

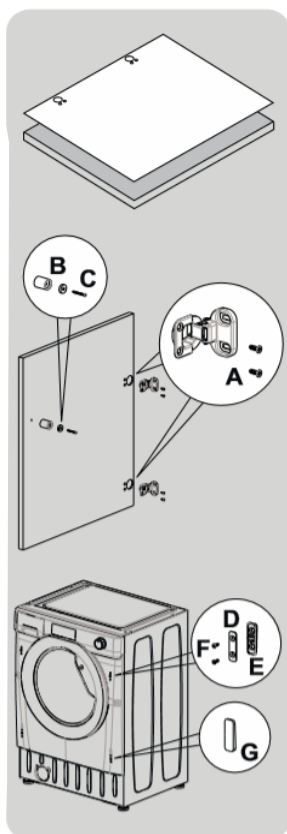
If the washing machine is built-in unscrew the **3** or **4** transit screws (**A**) on the back and remove the **3** or **4** flat washers, rubber bungs and plastic spacer tubes (**B**).

During the removal of the screws occasionally spacer tubes can fall inside the product, these can be removed by tilting the product forward & recovering them from

Cover the open transportation screw holes with the **2** or **4** plastic clips including the instruction bag.

Place the corrugated plastic sheet, found on top of the appliance during the unpacking process, into the base of the appliance as shown in (**fig 2**) (according to the model, consider **A,B,C**).

INSTRUCTIONS FOR MOUNTING THE FURNITURE DOOR



STEP ONE

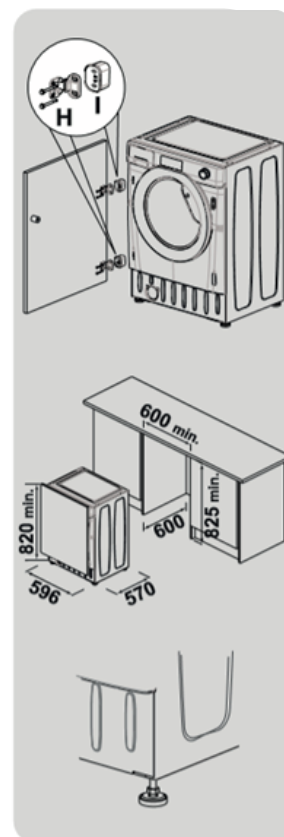
Position the template onto the reverse of the door. The hinges & closure magnet can be fitted on the right or left hand side depending on your requirements. Mark the screw holes positions, then drill out these positions.

Fix the hinges in place with the **4** screws provided

Fix the magnet **(B)** in place using screw **(C)**.

Mount the plate **(D)** on the right or left hand side, depending on your installation requirements. Place the plastic support **(E)** under the plate & fix it in position with screw **(F)**.

Snap mount cap **(G)** in the lower position.



STEP TWO

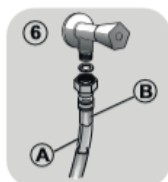
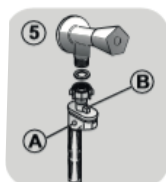
Mount the furniture door to the front of the washer using the hinges. Place the spacers under the hinges **(I)** & then fix in position with screw **(H)**.

We suggest mounting the furniture door so that it opens towards the left, which is the same direction as the porthole door. This will leave more space when you are loading the washing into the appliance.

Slide the washer into an opening the size indicated in the diagram opposite. A furniture plinth may run across the front of the appliance, but its height will be dictated by the height the washer is set at.

The **4** adjustable feet allow the height of the washer to be adjusted from **820mm** to a maximum height of **840mm**. To adjust the height, you should remove the nuts fitted to each foot and replace these with the **5mm** nuts supplied. Raise the feet to your desired height and then fully tighten the lock nut to the base of the washer.

PLUMBING CONNECTIONS



STEP ONE

Connect the water hose to the water supply tap (**fig 3**) only using the hose supplied with the appliance (**Do not reuse old hose-sets**)

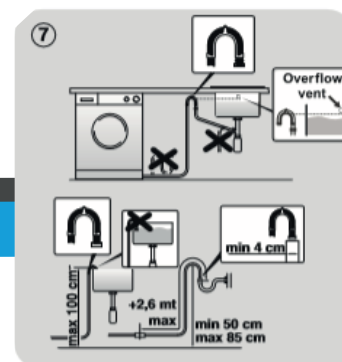
Some models may include one or more of the following features: **HOT & COLD (fig 4)**
Water mains connection settings with hot & cold water for higher energy savings. Connect the grey tube to the cold water tap & the red one to the hot water tap. The machine can be connected to the cold water tap only; in this case, some programs may start a few minutes later.

Aqua Stop (fig 5):

A device located on the supply tube that stops water flow if the tube deteriorates; in this case, a red mark will appear in the window (**A**) & the tube must be replaced. To unscrew the nut, press the one-way lock device (**B**)

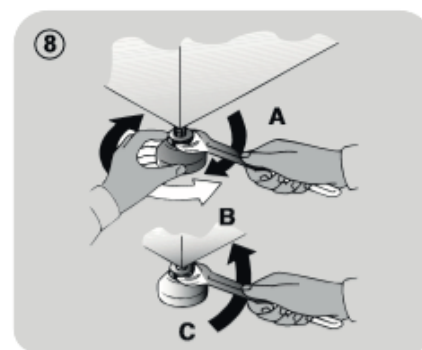
Aqua Protect - SUPPLY TUBE WITH GUARD (fig 6)
should water leak from the primary internal tube "A" the transparent containment sheath "B" will contain water to permit the washing cycle to complete. At the end of the cycle, contact the Customer Service Centre to replace the supply tube.

SETTING



STEP ONE

The washing machine should be installed in its final position making sure the water fill hose is not kinked or trapped. The corrugated drain hose should be inserted into suitable drain pipe of between **50cm & 85cm** height above the floor using the curved drain hose support. If an under sink connection is used the drain hose must be routed above the sink overflow opening to prevent back siphoning. Care must be taken to avoid kinking or trapping in the drain hose (**fig 7**)



STEP TWO

Level the appliance using the feet as illustrated in (**fig 8**)

- A)** Turn the nut clockwise to release the screw;
- B)** Rotate the foot to raise or lower it until it touches to the floor;
- C)** Lock the foot, screwing in the nut, until it tightens against to the bottom of the washing machine.

Plug in the appliance

CONTACT CUSTOMER SERVICE SHOULD THE POWER CABLE NEED REPLACEMENT