

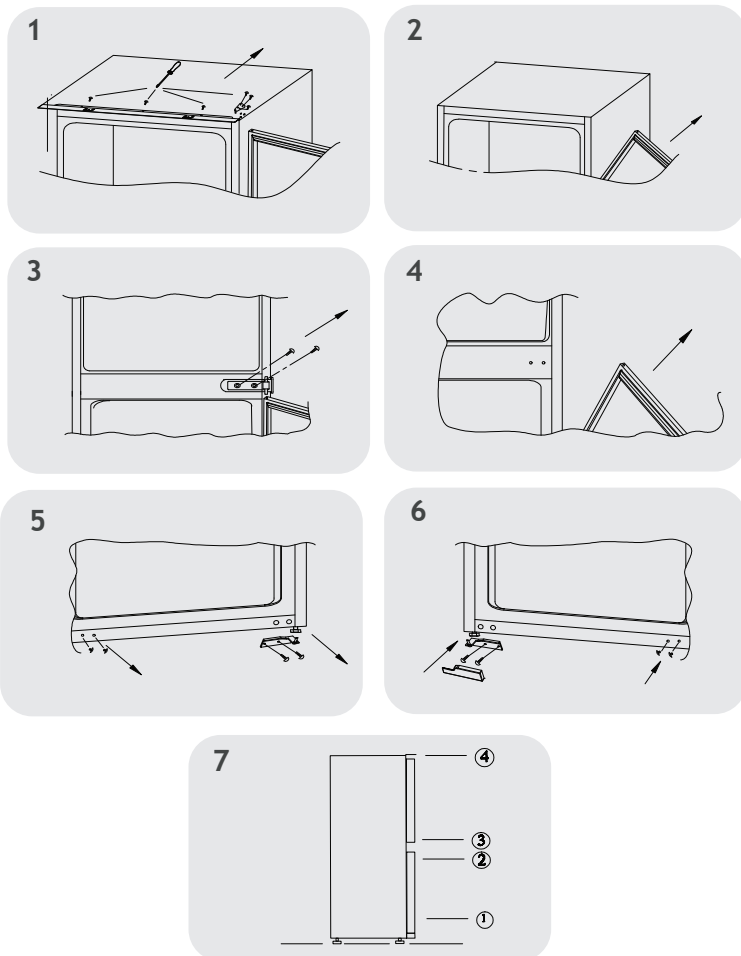
## REVERSIBILITY OF THE DOORS

The doors of the appliance can be reversed so as to allow the opening to the right or left according to exigency.

### NOTICE:

- Inversion of the doors must be performed by qualified technical personnel.
- Inversion of the doors is not covered by the warranty.

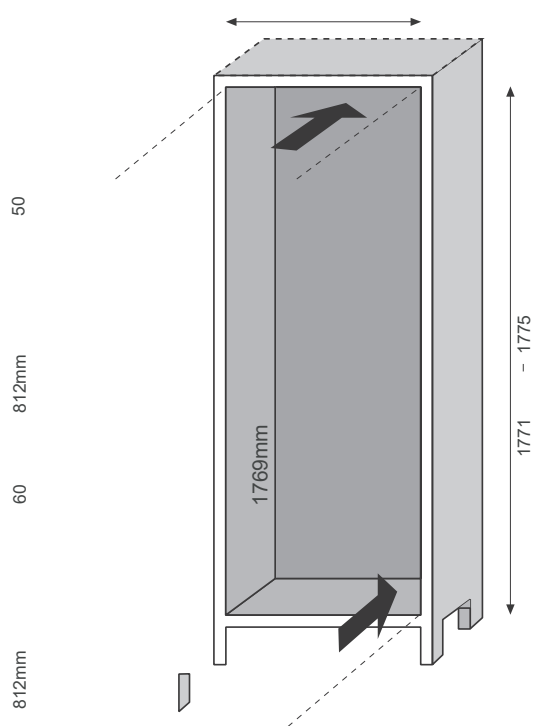
## REVERSING THE OPENING OF THE DOORS



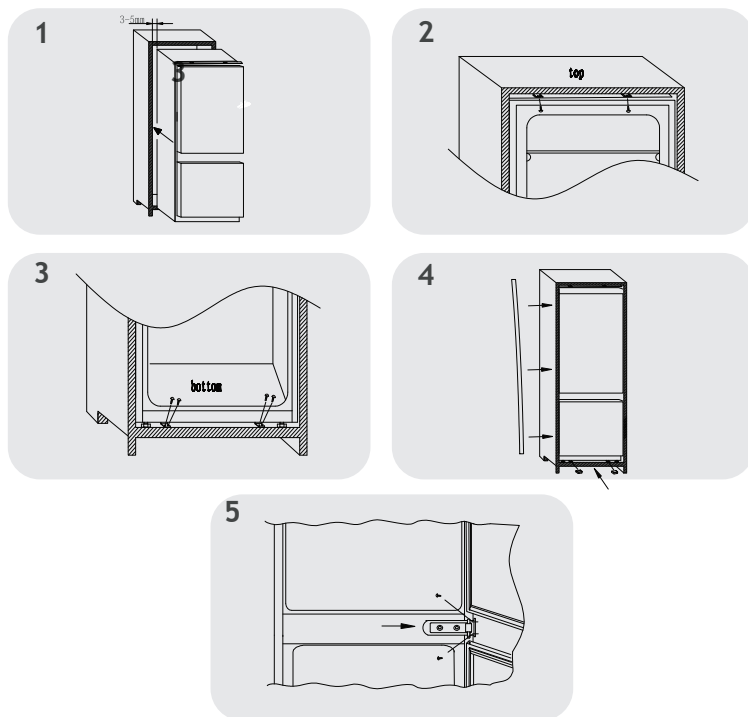
- 1) Remove the upper plate & hinge by screw driver.
- 2) Remove the upper door.
- 3) Remove the middle hinge & its connecting pin underneath.
- 4) Remove the bottom door.
- 5) Remove the right bottom hinge & left plastic plugs, and refit them onto the opposite side.
- 6) Use the opposite hinge and cover and fit into the left bottom.
- 7) Reassemble the doors and hinges working from bottom to top, from 1-4.



#### PRODUCT DIMENSIONS & BUILT-IN COMPARTMENT



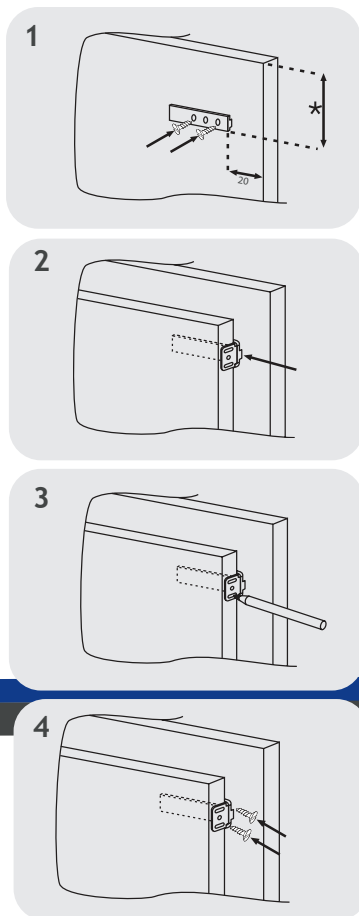
#### INSTALLATION OF THE APPLIANCE IN THE COLUMN



- 1) Insert the appliance into the column, placing it on the opposite site of the hinges, and make sure **3-5mm** distance gap.
- 2) After ensuring the match between appliance door and column door, then screw the appliance upper part to the cabinet.
- 3) Screw the appliance lower part.
- 4) Fit the seal to the appliance, cut off the excessive part if necessary. Fit the bottom parts with plastic covers.
- 5) Use a cross-screwdriver to loosen the connecting pin underneath the right middle hinge, and adjust the screw onto the right cabinet wall.

## COUPLING OF THE PANELS OF THE BUILT-IN COLUMN OF THE APPLIANCE DOOR

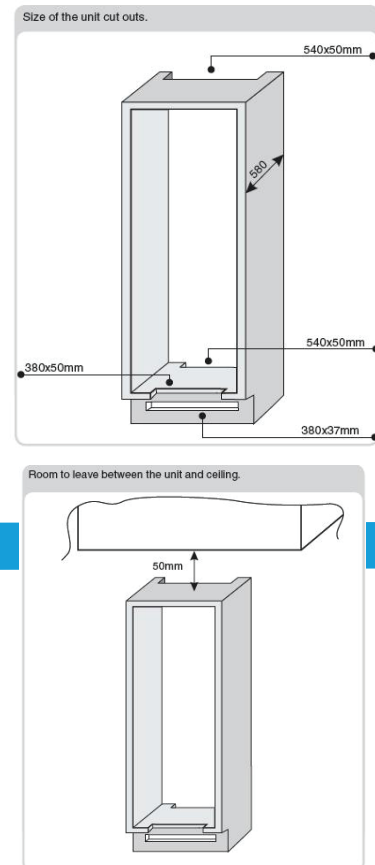
The appliance is equipped with coupling devices for the appliance doors with the column panels (**loader slide**).



- 1)** Secure the slide in the inner part of the panel of the built-in column at the desired height and at approx **20mm**. From the outer wire of the door.
- 2)** Open the doors of the built-in column and the fridge. Position the built-in loader in the slide, then fit it into the fridge door.
- 3)** Mark the fixing points for the screws and drill with a bit of a diameter of **2.5mm**.
- 4)** Connect the appliance door to the cabinet panel keeping the loader slots as guidelines.

## PRECAUTIONS FOR THE CORRECT OPERATION

Once the product has been embedded, place the rear part of the column in contact with the wall so as to prevent access to the compressor compartment. For the product to operate correctly it is essential to allow adequate air circulation so as to cool down the condenser located in the rear part of the appliance. For this reason, the column must be equipped with a rear chimney, whose upper opening must not be blocked and with a front slot which will be covered with a ventilation grill.



## SUSPENDING USE OF THE APPLIANCE

If the appliance is not to be used for a long time:

- 1)** Turn the appliance OFF (see Operation).
- 2)** Extract the plug or remove the safety device.
- 3)** Clean the appliance.
- 4)** Leave the doors of the appliance open.