



FREEZER

FREEZER	1-5	GB
FREEZER	6-11	IT
FREEZER	12-19	CZ
FREEZER	20-25	DU
FREEZER	26-34	RU
FREEZER	35-41	FI
FREEZER	42-48	NO
FREEZER	49-54	SW
FREEZER	55-61	HU
FREEZER	62-72	FR
FREEZER	73-78	SK
FREEZER	79-83	PT
FREEZER	84-88	ES
FREEZER	89-93	HR
FREEZER	94-98	PL
FREEZER	99-103	RO

Please read this instruction booklet carefully before using your Candy Freezer.

Thank you for purchasing this product.

Before using your refrigerator, please carefully read this instruction manual in order to maximize its performance. Store all documentation for subsequent usage or other owners. This product is intended solely for household use or similar applications such as:

- the kitchen area for personnel in shops, offices and other working environments
- on farms, by clientele of hotels, motels and other environments of a residential type
- at bed and breakfasts (B & B)
- For catering services and similar applications not for retail sale.

This appliance must be used only for purposes of storage of food, any other use is considered dangerous and the manufacturer will not be responsible for any omissions. Also, it is recommended that you take note of the warranty conditions.

SAFETY INFORMATION

The refrigerator contains a refrigerant gas (R600a: isobutene) and insulating gas (cyclopentane), with high compatibility with the environment, that are, however, inflammable.

We recommend that you follow the following regulations so as to avoid situations dangerous to you:

- **Before performing any operation, unplug the power cord from the power socket.**
- **The refrigeration system positioned behind and inside the appliance contains refrigerant. Therefore, avoid damaging the tubes.**
- **If in the refrigeration system a leak is noted, do not touch the wall outlet and do not use open flames. Open the window and let air into the room. Then call a service center to ask for repair.**
- **Do not scrape with a knife or sharp object to remove frost or ice that occurs. With these, the refrigerant circuit can be damaged, the spill from which can cause a fire or damage your eyes.**
- **Do not install the appliance in humid, oily or dusty places, nor expose it to direct sunlight and to water.**

- Do not install the appliance near heaters or inflammable materials.
- Do not use extension cords or adapters.
- Do not excessively pull or fold the power cord or touch the plug with wet hands.
- Do not damage the plug and/or the power cord; this could cause electrical shocks or fires.
- It is recommended to keep the plug clean, any excessive dust residues on the plug can be the cause fire.
- Do not use mechanical devices or other equipment to hasten the defrosting process.
- Absolutely avoid the use of open flame or electrical equipment, such as heaters, steam cleaners, candles, oil lamps and the like in order to speed up the defrosting phase.
- Do not use or store inflammable sprays, such as spray paint, near the appliance, it could cause an explosion or fire.
- Do not use electrical appliances inside the food storage compartments, unless they are of the type recommended by the manufacturer.
- Do not place or store inflammable and highly volatile materials such as ether, petrol, LPG, propane gas, aerosol spray cans, adhesives, pure alcohol, etc. These materials may cause an explosion.
- Do not store medicine or research materials in the appliance. When the material that requires a strict control of storage temperatures is to be stored, it is possible that it will deteriorate or an uncontrolled reaction may occur that can cause risks.
- Maintain the ventilation openings in the appliance enclosure or in the built-in structure, free of obstruction.
- Do not place objects and/or containers filled with water on the top of the appliance.
- Do not perform repairs on this appliance. All interventions must be performed solely by qualified

personnel.

- **This appliance can be used by children aged from 8 years and above and by persons with reduced physical, sensory or mental capabilities or with a lack of experience and knowledge; provided that they have been given adequate supervision or instruction concerning how to use the appliance in a safe way and understand the hazards involved.**
- **Children should not play with the appliance. Cleaning and user maintenance should not be made by children without supervision**

Scrapping old appliance




This appliance is marked according to the European directive 2012/19/EU on Waste Electrical and Electronic Equipment (WEEE). WEEE contains both polluting substances (which can cause negative consequences for the environment) and basic components (which can be re-used). It is important to have WEEE subjected to specific treatments, in order to remove and dispose properly all pollutants, and recover and recycle all materials. Individuals can play an important role in ensuring that WEEE does not become an environmental issue; it is essential to follow some basic rules:

- WEEE should not be treated as household waste;
- WEEE should be handed over to the relevant collection points managed by the municipality or by registered companies. In many countries, for large WEEE, home collection could be present.

In many countries, when you buy a new appliance, the old one may be returned to the retailer who has to collect it free of charge on a one-to-one basis, as long as the equipment is of equivalent type and has the same functions as the supplied equipment.

Conformity

By placing the  mark on this product, we are confirming compliance to all relevant European safety, health and environmental requirements which are applicable in legislation for this product.

Energy Saving

For better energy saving we suggest :

Installing the appliance away from heat sources and not exposed to direct sunlight and in a well ventilated room.

Avoid putting hot food into the refrigerator to avoid increasing the internal temperature and therefore causing continuous functional loading of the compressor.

Do not excessively stuff foods so as to ensure proper air circulation.

Defrost the appliance in case there is ice to facilitate the transfer of cold.

In case of absence of electrical energy, it is advisable to keep the refrigerator door closed.

Open or keep the doors of the appliance open as little as possible

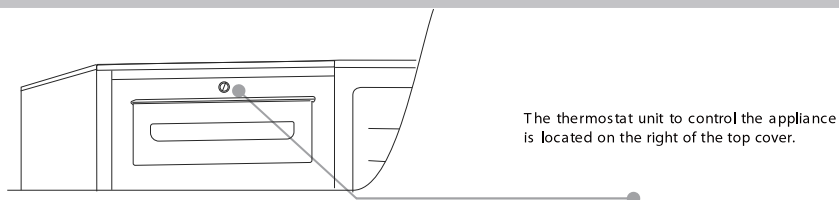
Avoid adjusting the setting to temperatures too cold.

Remove dust present on the rear of the appliance

SINGLE DOOR FREEZER

Wait at least two hours before switching the appliance on, in order to ensure that the refrigerant circuit is fully efficient.

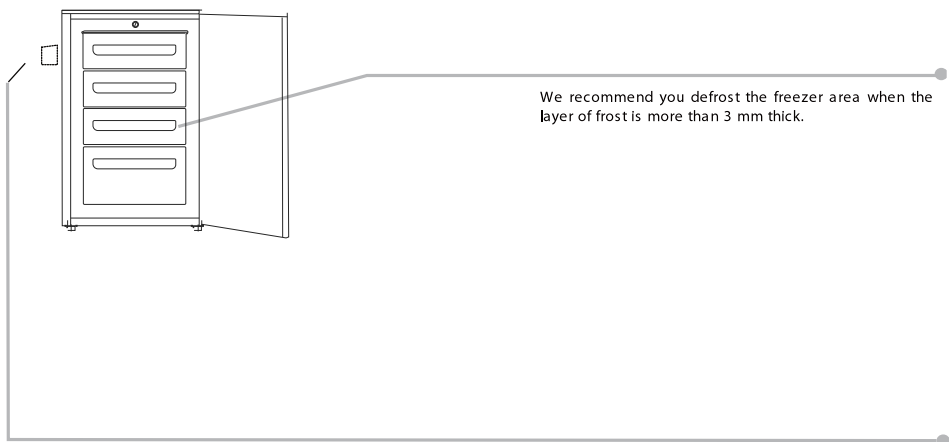
CONTROL PANEL



DEFROSTING and FREEZING

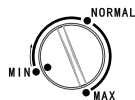
The rating plate states the maximum quantity of foods that can be frozen, (see "gure 2). Freezing is guaranteed with any knob setting.

(Figure 2)



NB. This is the rating plate. If you need to contact our Service Department in the event of faults, remember to give them the information on the plate.

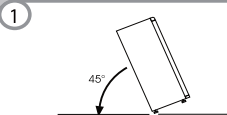
Important: If the room temperature is very warm, the appliance may work continuously and a layer of frost will deposit on the surface of the evaporator tubes and wires. In this case, turn the knob to lower settings (MIN).



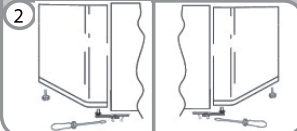
REVERSING THE OPENING OF THE DOORS

In order to reverse the opening of the doors, follow the indications in relation to the insert and hinge type your product is made up of.

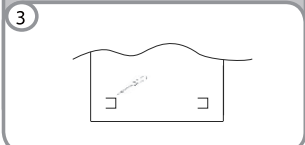
Place or tilt the fridge at a 45° angle, since it is necessary to work on the bottom of the appliance



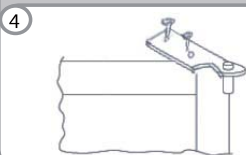
Remove the bottom hinge by removing the screws, the plug and washers, then remove the bottom door



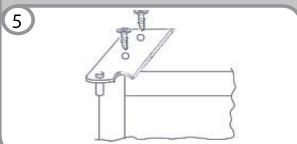
Remove the caps (A) and (B), loosen the screws and partially remove the panel.



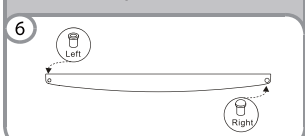
Unscrew the right hinge



Before reassemble the hinge to the left side, reverse the direction of the hinge.



Remove the plug on the left-hand side and insert it on the right hand-side of the door.



Reassemble the hinges and doors working from bottom to top, 1 2

