

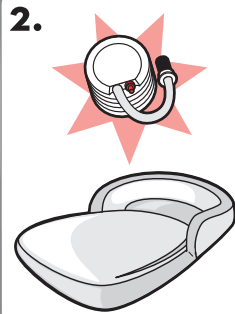
# ReadyBed™

My First ReadyBed™

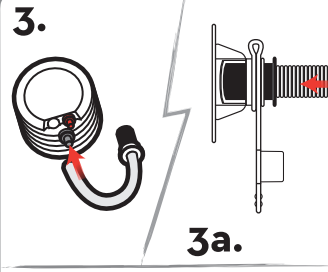
## INFLATION & SET UP



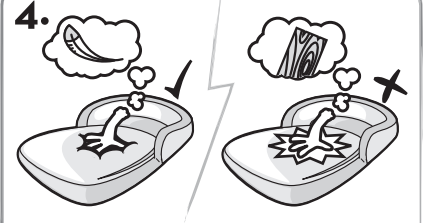
**1.** Ensure the floor area is clear & free from objects. Lay the bed out flat on the floor. Use bed on the floor. Do not use on raised surface.



**2.** Your bed can be inflated using the pump provided.

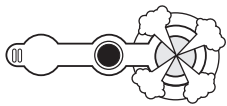


**3.** Add flex hose to air (blue) outlet.  
**3a.** Insert adaptor into valve.  
Only remove the top stopper for inflation. Inflate until mattress is firm but not hard.

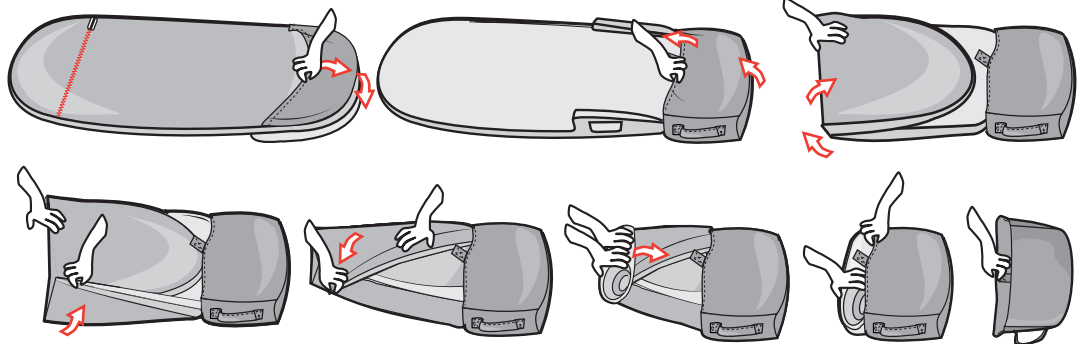


**4.** Under inflation can give a better night's sleep, if the bed is too hard it could cause some discomfort. Do not over inflate. **IMPORTANT!** The stopper must be fully inserted once the product has been inflated, to avoid any leakage.

## DEFLATION + STORAGE



Remove both stoppers for quick deflation



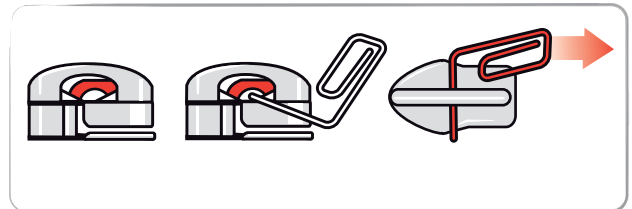
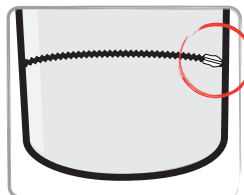
Store the ReadyBed™ in the integral bag attached to the bed (follow diagrams).



## WASHING INSTRUCTIONS

- Remove inflatable mattress before washing.
- Wipe inflatable mattress clean with a damp cloth only, if necessary.
- Wash separately.
- We recommend that this item is washed before first use.
- Machine wash warm.
- Do not use bleach.
- Do not tumble dry.
- Line dry or hang to dry.
- Do not iron.
- Ensure sleeping bag is completely dry before storage.

## IMPORTANT! Instructions for removing mattress:

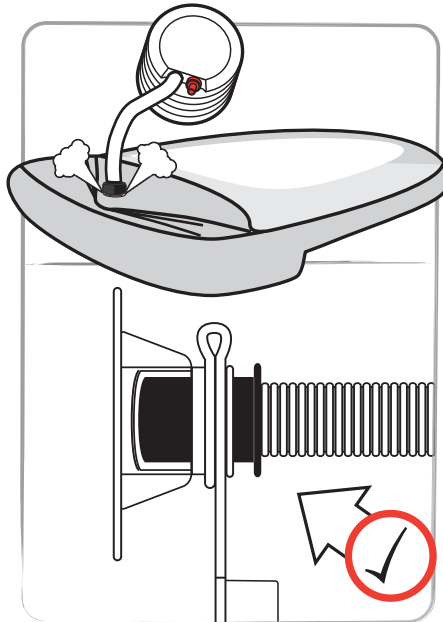


1. Child Proof zip to be opened by adult only.
2. To unlock zip, insert paper clip or similar into zip opener to release lock.
3. Pull zip to open. Ensure paper clip is removed before use. Repeat this procedure to close zip.

- Warning! Keep away from fire.
- Adult inflation / deflation required.
- Warning. Not suitable for children under 18 months. Suffocation risk.
  - CAUTION! The mattress is not a life saving device.
  - Remove all packaging ties before giving to your child.
- Do not place near fires or other sources of heat such as radiators, open or electric fires.
  - This is not an aquatic product. Do not use in water.

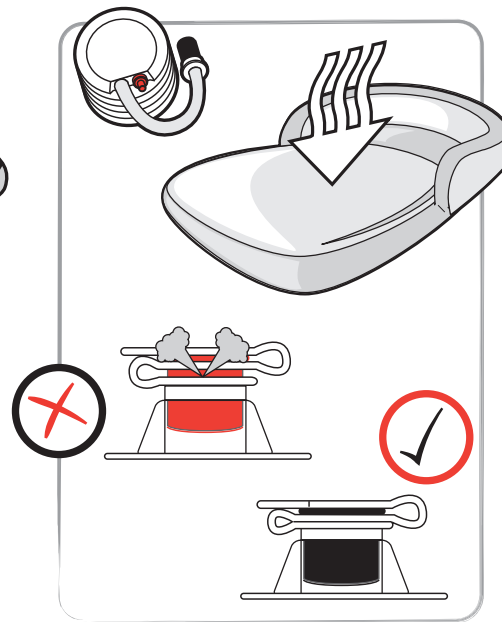
## TROUBLE SHOOTING: DEFLATION PROBLEMS

- The air is escaping while inflating the mattress.



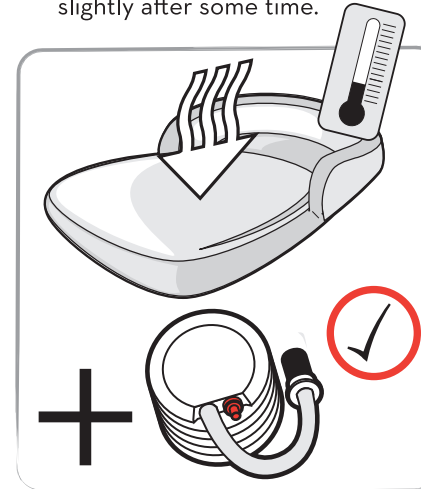
Check that the adaptor has an air tight fit on the valve.

- The mattress is deflating soon after I have completed inflation.



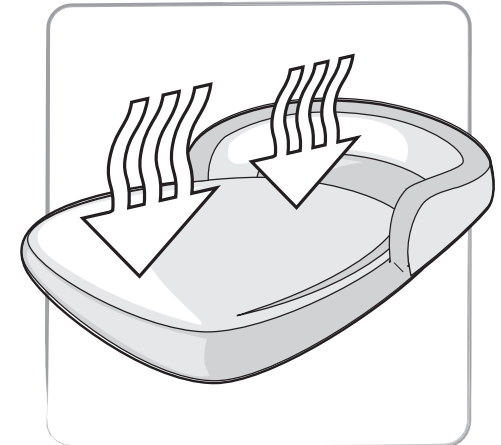
Check that the stopper is fully inserted once inflated.

- The mattress seems to deflate slightly after some time.



As the air inside the mattress cools to room temperature, the pressure will drop inside the mattress making it seem like the mattress has a puncture. The mattress will require regular top ups of air due to changes in temperature.

- The mattress is deflating completely.



Remove the mattress from the cover and inflate the mattress again to check for any obvious punctures.

### ! IMPORTANT

- Over inflation could cause damage to the mattress seams.
- When not in use, deflate and store in the bag. For temporary storage, keep upright against a wall and out of children's way.



- Do not stand, jump or bounce on the bed, as this will result in splitting the seams of the internal mattress.
- Not designed or intended for use in play.
- Remove all sharp objects from area where the bed will be set up and used. Protruding objects may puncture the mattress.
- Suitable for ages 18mos - 3 years.
- Retain packaging and instructions for future reference.



Worlds Apart Ltd,  
St. Columb Major Business Park, Cornwall,  
TR9 6SX, United Kingdom  
www.worldsapart.com  
Design & © 2018 Worlds Apart Ltd.  
All Rights Reserved.  
Product Features protected by Patent EP1228728.  
Made in Dongguan China.  
INS.401U 28/06/18