



PowerA™

# ENHANCED WIRED CONTROLLER

USER MANUAL  
Manuel de l'utilisateur  
Bedienungsanleitung  
Manual de usuario  
Manuale per l'uso  
Manual do usuário

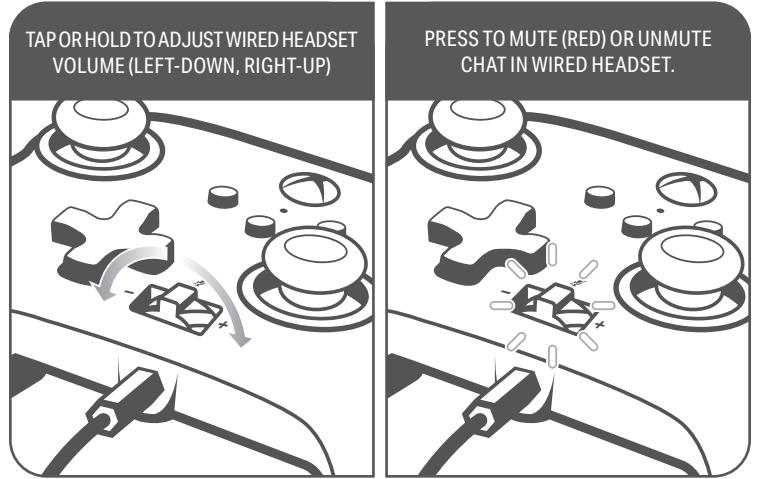
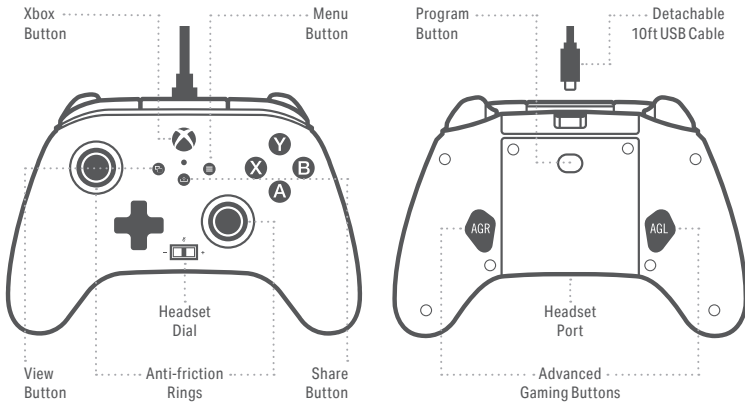


Customer Service  
Service client  
Kundendienst  
Servicio a clientes  
Assistenza clienti  
Apóio ao Cliente

BDA, LLC.  
15525 Woodinville-Redmond Rd NE  
Woodinville, WA 98072

Two year limited warranty  
For warranty details or support with your authentic PowerA accessories, please visit [PowerA.com/Support](http://PowerA.com/Support).

Beschränkte 2-Jahre-Garantie Informationen zur Garantie oder Unterstützung zu Ihrem PowerA-Originalzubehör finden Sie unter [PowerA.com/Support](http://PowerA.com/Support).  
Garantía limitada de dos años Si quieres más información sobre la garantía o necesitas ayuda con tus accesorios originales de PowerA, visita [PowerA.com/Support](http://PowerA.com/Support).  
Garantie limitée de deux ans Pour plus de détails sur la garantie ou pour obtenir une assistance pour vos accessoires PowerA d'origine, veuillez consulter le site [PowerA.com/Support](http://PowerA.com/Support).  
Garanzia limitata di due anni Per i dettagli sulla garanzia o per richiedere assistenza per i tuoi accessori PowerA autentici, visita la pagina [PowerA.com/Support](http://PowerA.com/Support).  
Garantía limitada de dois anos Para mais informações sobre a garantia ou os acessórios originais da PowerA, visita [PowerA.com/Support](http://PowerA.com/Support).



## ENGLISH CONTENTS

- PowerA Enhanced Wired Controller for Xbox
- Detachable 10ft USB Cable
- User Manual

### SET UP

1. If Xbox is Off, connect the USB cable between available USB port on Xbox and Micro-USB port on controller. Press the Xbox Button on controller until console powers On. The small LED will illuminate to indicate connection successful.  
2. If Xbox is On, connect the USB cable between available USB port on Xbox and Micro-USB port on controller. The small LED will illuminate to indicate connection successful.

**NOTE:** For player and controller assignment reference your official Xbox users manual.

### ASSIGNING THE ADVANCED GAMING BUTTONS:

1. Press the Program Button on the back of the controller. The LED Connection Indicator will flash, signaling the controller is in assign mode.  
2. Press 1 of the following buttons (A/B/X/Y/LB/RB/LT/RT/Left Stick Press/Right Stick Press/D-pad) to re-assign. Then press the Advanced Gaming Button (AGR or AGL) that you wish to assign. The LED connection indicator will stop flashing, signaling the Advanced Gaming Button has been set.  
3. Repeat for the remaining Advanced Gaming Button.  
**NOTE: Advanced Gaming Button assignments will remain in memory even after disconnected.**

### RESETTING THE ADVANCED GAMING BUTTONS:

1. Hold the Program Button down for 2 seconds. The LED Connection Indicator will slowly flash, signaling the controller is in assign mode.  
2. Press the previously assigned button, and the function will be cleared.

### USING THE SHARE BUTTON

Refer to Xbox documentation for details on functions and features related to the Share button.

### USING THE HEADSET DIAL

Once you plug the 3.5mm jack from your headset into the controller, Dial will become active and LED will turn red to indicate chat is muted. Press down on dial to mute/unmute chat. To adjust volume, tap left or right to adjust step by step, or press and hold left or right to adjust volume to full up or full down.

**NOTE: Audio controls within Xbox Settings will take first priority, followed by the the Headset dial, and finally any audio or mute controls on your headset. Refer to your Xbox and headset documentation for additional details.**

### TROUBLESHOOTING

For current FAQs, visit [www.PowerA.com/support](http://www.PowerA.com/support)  
Q: Controller will not connect to Xbox console?  
A: Confirm your Xbox console is powered "ON".  
A: Confirm your TV is set to the proper Video Channel and that you can see the Xbox console interface on your TV screen.  
A: Confirm cable is properly connected to you Xbox console.  
A: Confirm cable is properly connected to your PowerA Enhanced Wired Controller.  
Q: Controller is connected but has no function?  
A: Confirm you are using the Player # 1 controller. For more troubleshooting refer to your Xbox console User Guide.

### MOTION WARNING

Playing video games can make your muscles, joints, skin or eyes hurt. Follow these instructions to avoid

problems such as tendinitis, carpal tunnel syndrome, skin irritation or eyestrain: • Avoid excessive play. Take a 10 to 15 minute break every hour, even if you don't think you need it. Parents should monitor their children for appropriate play. • If your hands, wrists, arms or eyes become tired or sore while playing, or if you feel symptoms such as tingling, numbness, burning or stiffness, stop and rest for several hours before playing again. • If you continue to have any of the above symptoms or other discomfort during or after play, stop playing and see a doctor.

### REGIONAL COMPLIANCE SYMBOLS

More information available via web-search of each symbol name.

The WEEE symbol informs the end-user about separate disposal requirements for WEEE (Waste of electrical and electronic equipment) as required per the Article 11(2) of the WEEE Directive and prescribed by European standard EN50419:2005.

CE (Conformité Européenne aka European Conformity) is a certification mark that indicates conformity with health, safety, and environmental protection standards for products sold within the European Economic Area.

The Regulatory Compliance Mark is a visible indication of a product's compliance with all applicable ACMA (Australian Communications and Media Authority) regulatory arrangements, including all technical and record-keeping requirements regarding the electrical safety and/or electromagnetic compatibility (EMC).

### FCC STATEMENT

This device complies with Part 15 of the FCC Rules. Operation is subject to the following two conditions: (1) this device may not cause harmful interference, and (2) this device must accept any interference received, including interference that may cause undesired operation. Warning: Changes or modifications to this unit not expressly approved by the party responsible for compliance could void the user's authority to operate the equipment. Note: This equipment has been tested and found to comply with the limits for Class B digital device, pursuant to Part 15 of the FCC Rules. These limits are designed to provide reasonable protection against harmful interference in a residential installation. This equipment generates, uses and can radiate radio frequency energy and, if not installed and used in accordance with the instructions, may cause harmful interference to radio communications. However, there is no guarantee that interference will not occur in a particular installation. If this equipment does cause harmful interference to radio or television reception, which can be determined by turning the equipment off and on, the user is encouraged to try to correct the interference by One or more of the following measures:  
• Reorient or relocate the receiving antenna.  
• Increase the separation between the equipment and receiver.  
• Connect the equipment into an outlet on a circuit different from that to which the receiver is connected.  
• Consult the dealer or an experienced radio/ TV technician for help.

### CAN ICES-3(B)/NMB-3(B):

This device complies with Industry Canada license exempt RSS standard(s). Operation is subject to the following two conditions: (1) This device may not cause interference, and (2) this device must accept any

interference, including interference that may cause undesired operation of the device.

### AUSTRALIAN WARRANTY STATEMENT:

This product comes with guarantees that cannot be excluded under the Australian Consumer Law. You are entitled to a replacement or refund for a major failure and for compensation for any other reasonably foreseeable loss or damage. You are also entitled to have the goods repaired or replaced if the goods fail to be of acceptable quality and the failure does not amount to a major failure. If purchased within Australia or New Zealand, this product comes with a One-year warranty from date of purchase. Defects in the product must have appeared within One year from date of purchase, in order to claim the warranty. All warranty claims must be facilitated back through the retailer of purchase in accordance with the retailer's return policies and procedures. Any expenses incurred, as a result of returning the product to the retailer of purchase are the full responsibility of the consumer.

### AU WHOLESALE DISTRIBUTOR:

Level 2, 2 Darling Street South Yarra, Australia VIC 3141  
[bluemouth.com.au](http://bluemouth.com.au) | Email: [support@bluemouth.com.au](mailto:support@bluemouth.com.au)  
+61 3 9867 2666

### MANUFACTURED BY:

Bensussen Deutsch & Associates, LLC.  
15525 Woodinville-Redmond Rd.  
NE Woodinville, WA 98072  
BDAINC.com | PowerA.com

### DECLARATION OF CONFORMITY

Hereby, Bensussen Deutsch & Associates LLC at 15525 Woodinville-Redmond Road NE, Woodinville, WA 98072 USA, declares that this wired controller is in compliance with Directive 2014/30/EU. The full text of the EU Declaration of Conformity is available at the following internet address: [PowerA.com/compliance](http://PowerA.com/compliance)

### ADDITIONAL LEGAL

PowerA, and the PowerA logo are trademarks of Bensussen Deutsch and Associates, LLC. TM and © Bensussen Deutsch and Associates, LLC. This product is manufactured under license from Microsoft Corporation. Microsoft, Xbox, Xbox "Sphere" Design, Xbox Series X, and Xbox One are trademarks of the Microsoft group of companies. All other trademarks are the property of their respective owners.

### FRENCH CONTENT

- Manette filaire PowerA optimisée pour la Xbox
- Câble USB détachable de 3 m
- Manuel de l'utilisateur

### CONFIGURATION

1. Alors que votre Xbox est hors tension, raccordez le câble USB de 3 m à l'un des ports USB disponibles de votre console Xbox. Raccordez l'autre extrémité du câble USB au port USB de votre manette filaire optimisée PowerA. Appuyez sur la touche Xbox et maintenez-la enfoncée jusqu'à ce que la console s'allume. Le voyant de connexion à DEL de la manette s'allumera pour indiquer que la manette est connectée.  
2. Alors que votre Xbox est sous tension, raccordez le câble USB de 3 m de la manette dans l'un des ports USB disponibles de votre console Xbox. Raccordez l'autre extrémité du câble USB au port USB de votre manette filaire optimisée PowerA. Le voyant de connexion à DEL de la manette s'allumera pour indiquer que la manette est connectée.

**REMARQUE :** Pour affecter une manette à un joueur, reportez-vous au manuel d'utilisation de votre Xbox.

### AFFECTATION DES BOUTONS D'ACTION AVANCÉE :

1. Appuyez sur le bouton de programmation au dos de la manette. Le voyant de connexion à DEL clignotera, indiquant que la manette est en mode d'affectation.  
2. Appuyez sur l'un des boutons suivants (A/B/X/Y/LB/RB/LT/RT/Left Stick Press/Right Stick Press/D-pad) pour réaffecter une fonction. Appuyez ensuite sur le bouton d'action avancée (AGR ou AGL) pour l'affecter. Le voyant de connexion à DEL cessera de clignoter, indiquant que le bouton d'action avancée a été affecté.  
3. Recommencez pour le bouton d'action avancée restant.  
**REMARQUE :** Les affectations des boutons d'action avancée resteront en mémoire même lorsque le dispositif est déconnecté.

### RÉINITIALISATION DES BOUTONS D'ACTION AVANCÉE :

1. Maintenez le bouton d'affectation enfoncé pendant 2 secondes. Le voyant de connexion à DEL clignotera lentement, indiquant que la manette est en mode d'affectation.  
2. Appuyez sur le bouton précédemment assigné, et la fonction sera effacée.

### UTILISATION DU BOUTON PARTAGER

Reportez-vous à la documentation Xbox pour plus de détails sur les fonctions et les fonctionnalités liées au bouton Partager.

### UTILISATION DE L'ACCESSOIRE DE CONTRÔLE DU SON DU CASQUE

Une fois que vous aurez branché la prise jack de 3,5 mm de votre casque sur la manette, l'accessoire de contrôle du son s'activera et la LED deviendra rouge pour indiquer que le chat est en mode muet. Appuyez sur l'accessoire de contrôle du son pour désactiver/ réactiver le son du chat. Pour régler le volume, appuyez à gauche ou à droite peu à peu ou maintenez la touche gauche ou droite enfoncée pour monter ou baisser le volume au maximum.  
**REMARQUE :** Les commandes audio dans les paramètres Xbox seront prioritaires, suivies de l'accessoire de contrôle du son du casque, et enfin de toutes les commandes audio ou muettes de votre casque. Reportez-vous à la documentation de votre Xbox et de votre casque pour plus de détails."

### DÉPANNAGE

Pour consulter la FAQ, rendez-vous sur [PowerA.com/support](http://PowerA.com/support)  
Q: La manette ne se connecte pas à la console Xbox ?  
R: Vérifiez que votre console Xbox est allumée.  
R: Assurez-vous que votre téléviseur est réglé sur la chaîne vidéo appropriée et que vous pouvez voir l'interface de la console Xbox sur l'écran de votre téléviseur.  
R: Assurez-vous que le câble est correctement connecté à votre console Xbox.  
R: Vérifiez que le câble est bien raccordé à la manette filaire optimisée PowerA.  
Q: La manette est connectée mais ne fonctionne pas ?  
R: Assurez-vous que vous utilisez la manette Joueur n°1. Pour des informations de dépannage supplémentaires, reportez-vous à votre manuel d'utilisation de la console Xbox.

### MISE EN GARDE AU SUJET DES MOUVEMENTS

Les jeux vidéo peuvent provoquer des douleurs des muscles, des articulations, de la peau ou des yeux. Respectez les consignes suivantes pour éviter les problèmes tels que tendinite, syndrome du canal carpien, irritation cutanée ou fatigue oculaire :

