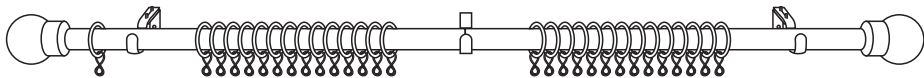


25/28mm Metal curtain pole

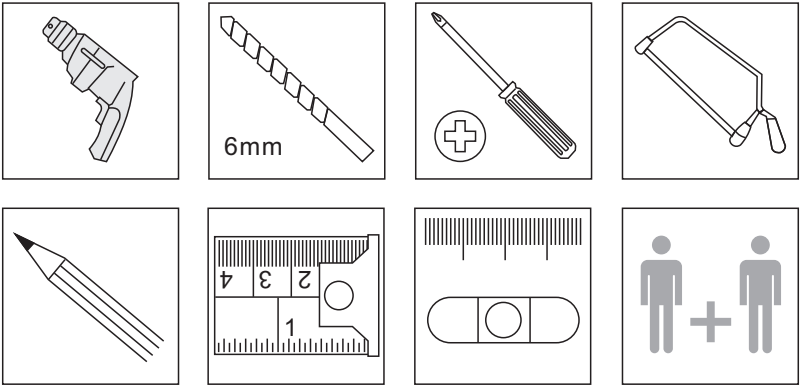


Product List

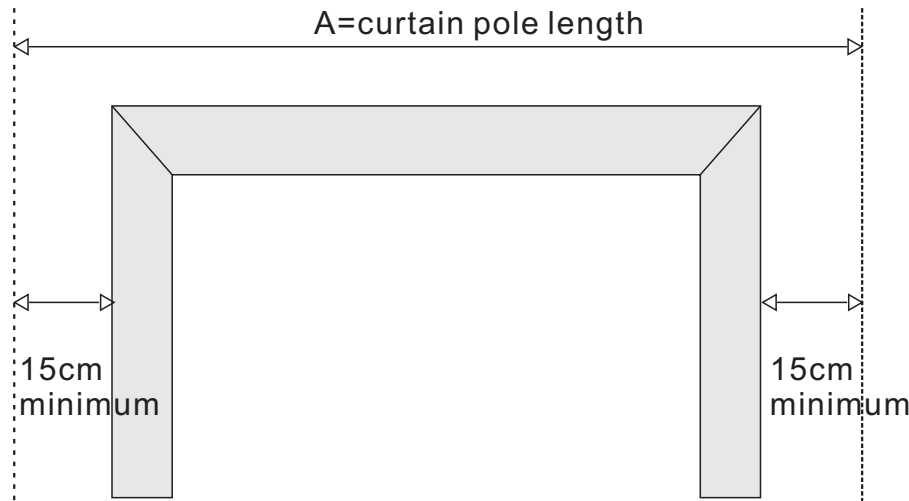
	Picture	Fitting parts	Up to 1.1m	1.1m to 2m	2m to 3m
A		25mm pole	1	1	2
B		28mm pole	0	1	1
C		Bracket	2	3	3
D		Finial	2	2	2
E		Ring	12	20	30
F1		28mm Finial adapter	0	1	0
F2		25mm Finial adapter	2	1	2
G		28mm Plastic insert	0	1	2
H1		Wall plug	4	6	6
H2		Screw	4	6	6

Note :
Note: Actual finials and rings may differ from illustration.

You will need



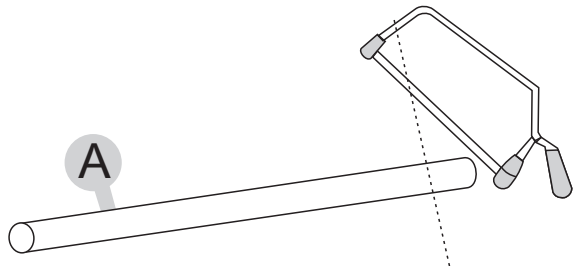
1 Measure the size of window



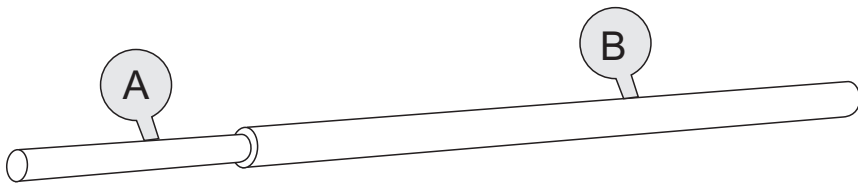
For larger windows and thicker curtains, this dimension can be increased so the curtains don't obstruct the windows when open.

2 Choose the pole and accessories according to the window size.

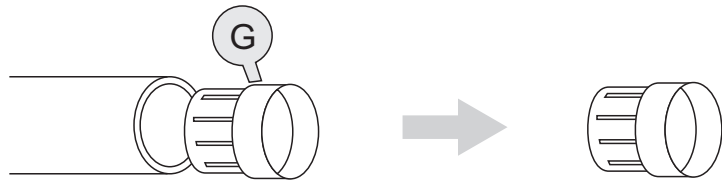
(1) Up to 1.1m: Use pole A only, this can also be cut to a smaller size if required.



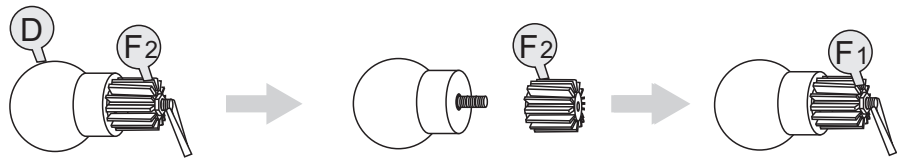
(2)Window from 1.1m to 2m



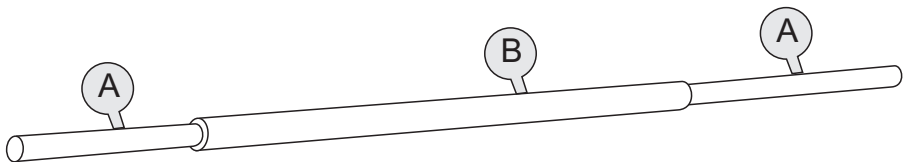
a. Remove one plastic insert from pole B



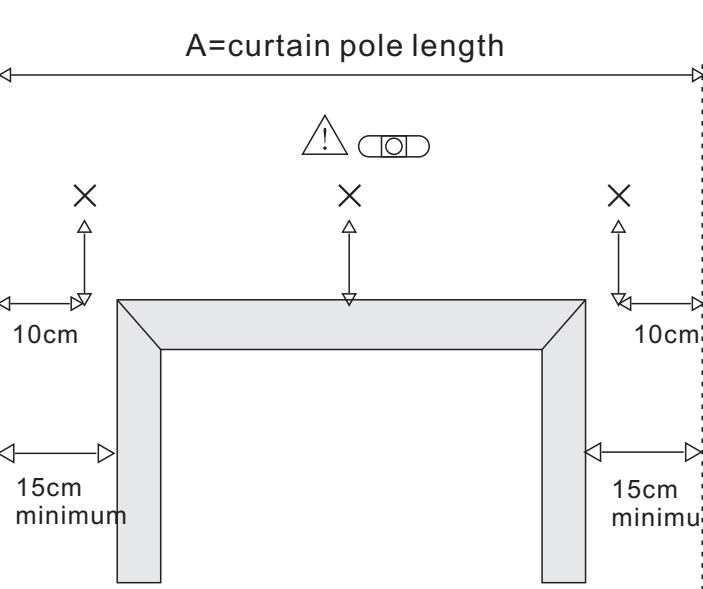
b. Change one adapter on finial D from F2 to F1 to fit pole B



(3)Window from 2m to 3m

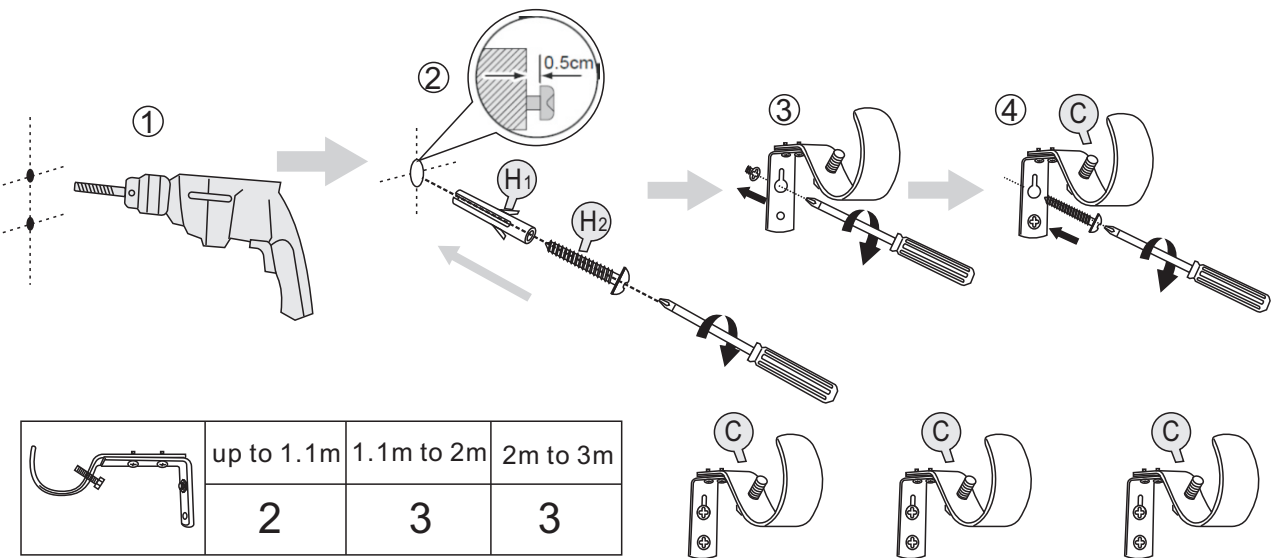


3 Install the brackets [C] [H1] [H2]

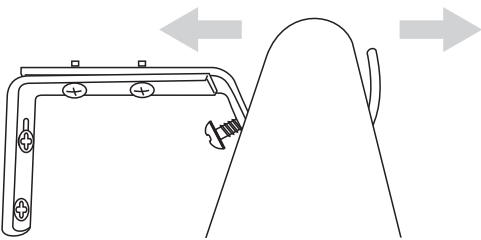


The end brackets must be positioned 10cm in from the end of the pole.
If a centre bracket is required, please position this in the centre between the two end brackets. Mark the position on the wall ensuring they are level.

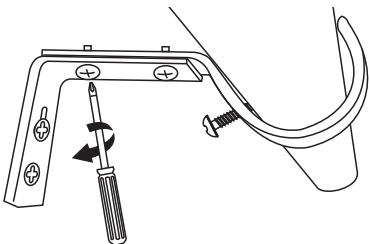
Note :
Please ensure the correct wall plugs are used to suit your wall type.
Wall fixing kit supplied for solids walls only.
When drilling into walls check that there are no hidden electrical wires or water pipes. If a non-solid wall use appropriate wall fixings.
Please refer to the guide on the reverse of these instructions. If in doubt seek professional advice.



4 Adjust the brackets

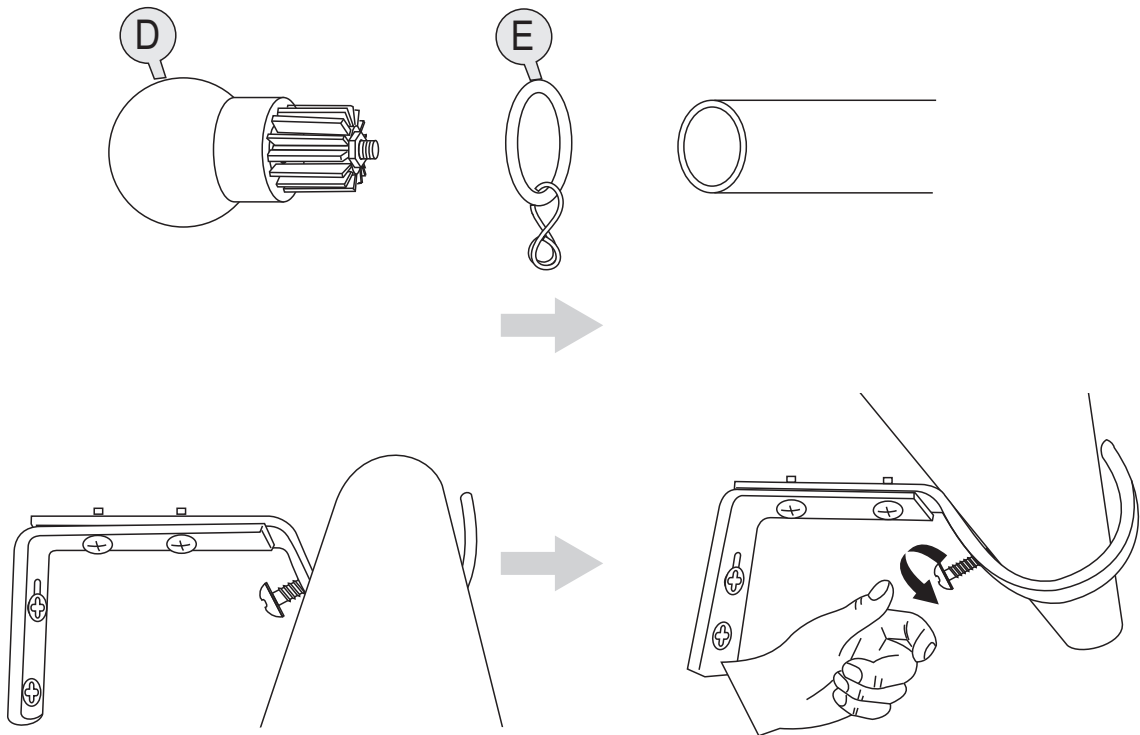


This bracket can be extended to move the curtains further from the wall when stacked back, to clear window sills and radiators



Loosen screws slightly, adjust to required extension, re-tighten screws.

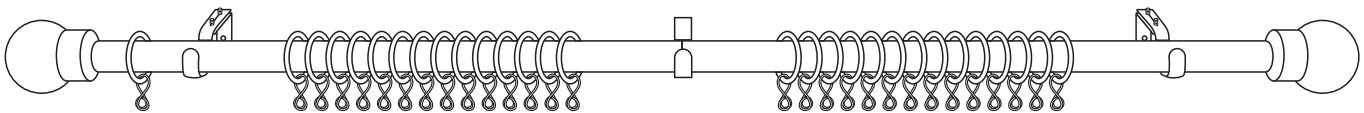
5 Mount the pole on the brackets & install Rings and finial [D] [E]



Tighten the bracket screw

Note : Bracket screws to secure the poles are pre-fitted to the brackets, the curtain poles must be secured with the bracket screws.

6 [Icon of two people]



The pole is now ready to accept curtains by slipping hooks through the eyelets on the rings

After assembly, wipe the pole with a dry cloth to remove any fingerprints. To maintain the smooth performance of your pole, periodically wipe the pole with furniture polish.

Please note that specifications of fittings may vary from those illustrated. Retain for future reference. Periodically check and re-tighten fixings.