

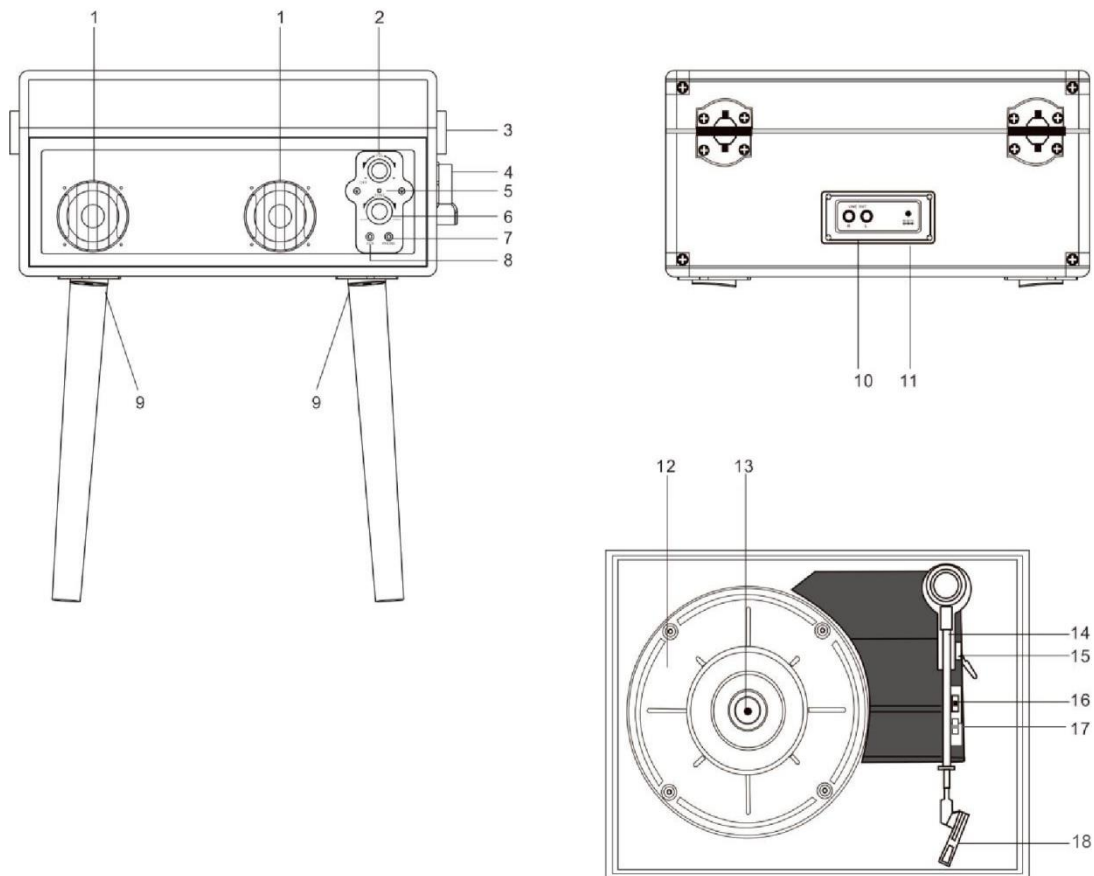
# **BV-T039    Record Player**

## **Instruction Manual**

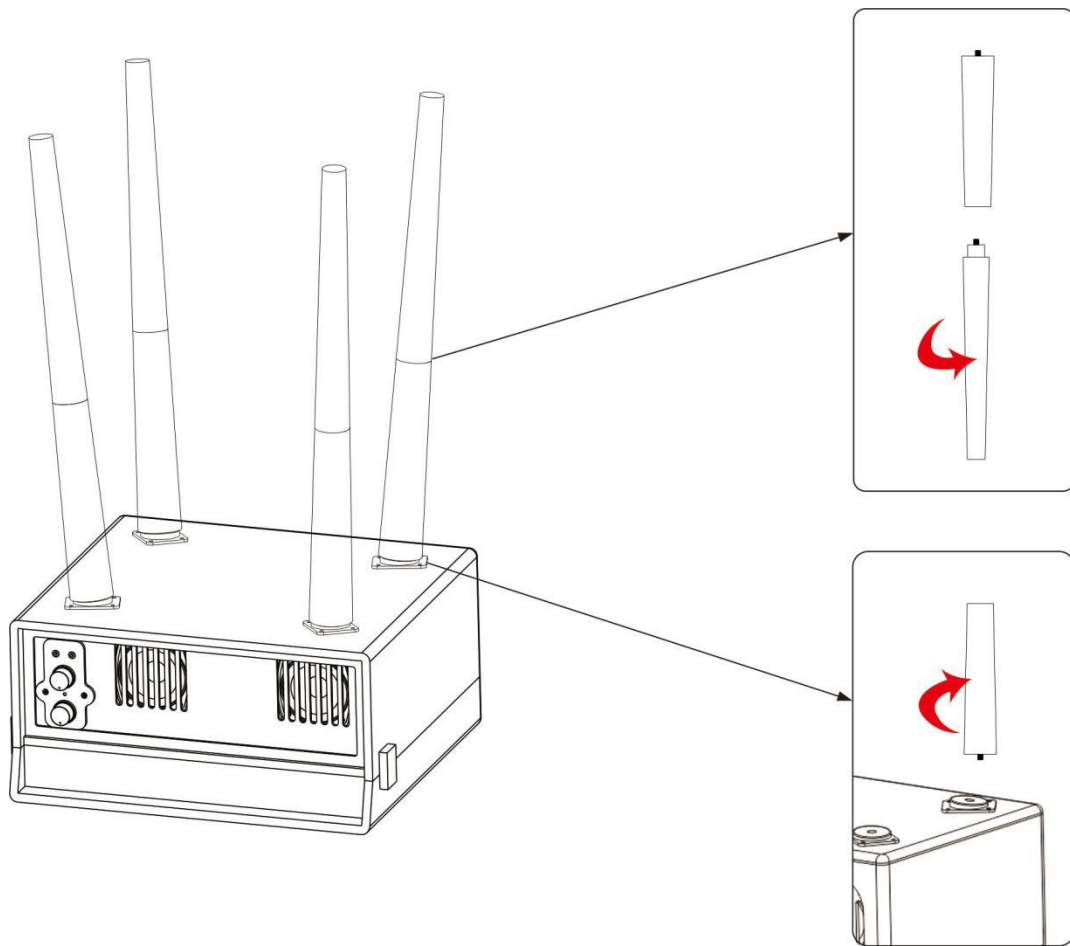


**READ INSTRUCTIONS CAREFULLY BEFORE USE AND STORE  
IN A SAFE PLACE FOR FUTURE REFERENCE**

# DESCRIPTION



1	Built-in speaker	10	RCA L/R out
2	Power on/off Volume control	11	DC in jack
3	Lock catch	12	Turntable Platter
4	Handle	13	Turntable Shaft
5	Power indicator	14	Tone Arm
6	Tone control	15	Lift Lever
7	Headphone jack	16	Speed Control
8	Aux in jack	17	Autostop on/off switch
9	Removable foot	18	Stylus (Needle) Cartridge



### **Main features:**

- 33.3,45,45rpm Turntable LP player
- Built-in Speaker
- Aux in Jack
- RCA Line Out
- With headphones jack
- With inside transformer 5V 1A and power cord
- With 45RPM adaptor

# **INITIAL SET-UP**

## **MAINS CONNECTION**

Ensure that the mains voltage of your home corresponds to the operating voltage of the unit. Your unit is ready to be connected to a mains voltage of 230V/50Hz.

## **AMPLIFIER CONNECTION (if required)**

Whilst you can listen to your new turntable using the built in speakers you may wish to connect it to your existing Hi Fi system. Connect the audio plugs to the jack input on your mixer or amplifier using an RCA cable (not supplied)

- **Red plug into R/H channel input.**
- **White plug into L/H channel input.**

## **HEADSET OR EXTERNAL SPEAKERS CONNECTION (if required)**

Connect the audio plugs to the jack input on your Headset or Speakers.

## **Playing a record**

To play a vinyl record, follow the steps below

- 1: Turn the Power/Volume Dial(No.2 on the Front and Rear Control Panels parts list) clockwise until you hear a 'click' sound. The LED Power indicator Light will illuminate red, indicating that the Turntable with Legs is now turned on.
- 2: Set the Auto Stop Switch (No.17 on the Turntable parts list) to the ON position. The unit will now be set to automatically stop after the completion of play of the vinyl record. If the Auto Stop Switch is set to the OFF position, the unit will not stop automatically.
- 3: Choose the desired playing speed using the Speed Selection Switch (No.16 on the Turntable parts list) between 33 1/3, 45 and 78 RPM.
- 4: Carefully place the vinyl record on the turntable
- 5: Unlock tone arm lock by moving it up and away from the tone arm itself.
- 6: Raise the tone arm using the arm raise lever or carefully with your hand.
- 7: Place the tone arm vertically over the first track of the record or over the outer edge of the vinyl record. The turntable will start spinning.
- 8: Lower the stylus onto the vinyl record.

## **The Auxiliary input**

- The Auxiliary input at the back of the equipment, can connect the external audio device (such as CD player). The audio signal from the external audio device will be played through the system.
- If an external audio device is connected to the AUX IN socket, playing of the auxiliary device takes priority over other features.

## **MAINTENANCE**

### REPLACING THE STYLUS

-Refer to the figures 1-8



push the arm lock to release the tone-arm.



take off cap of the cartridge to expose the needle out.



separate the cartridge from the socket lightly.



take off the audio-line from the cartridges completely.

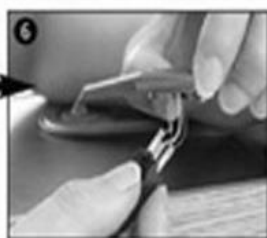


to fit a new one just in opposite deals. insert the audio-line accordingly, and install the cartridge to the socket lightly.

NOTE: Please exercise extreme care whilst performing this operation so as to avoid the tone arm and audio line wires from any damage.

### INSTALLING A NEW STYLUS CARTRIDGE

-Refer to the figures 5 & 6



### NOTES

We advise you to clean your records with an anti-static cloth to gain maximum enjoyment from them and to make them last.

We would also point out that for the same reason your stylus should be replaced periodically (approximately every 250 hours)

Dust the stylus from time to time using a very soft brush dipped in alcohol (brushing from back to front of the cartridge)

**WHEN TRANSPORTING YOUR RECORD PLAYER DO NOT FORGET TO:**

- Replace the protective cap on the stylus.
- Put the rest clip into the pick-up arm

## Specifications

### AMPLIFIER

Output power..... 2W+2W  
Frequency response..... 60 TO 20,000 Hz

### GRAMOPHONE

Motor..... DC servo motor  
Drive system..... Belt drive  
Speed..... 33-1/3 rpm, 45 rpm and 78 rpm  
Wow & Flutter..... Less than 0.3% (WTD)  
SNR ..... More than 35 dB  
Cartridge type..... Ceramic stereo cartridge  
Output level..... 1 KHz -1200 mV

### SPEAKER SYSTEM

Impedance..... 4 ohm  
Input power..... Max. 3 W

### GENERAL

Power requirements..... AC 100/240 V ~ 50/60 Hz  
Power consumption..... 6W  
Dimensions (LxDxH) .....18.5" x 15.0" x 9.6"  
Standard accessories..... Instruction manual

adaptor

**Don't discard electrical and electronic appliances with regular waste.**

- **Take them to an official collection point.**
- **Some components may be hazardous to health and the environment.**

