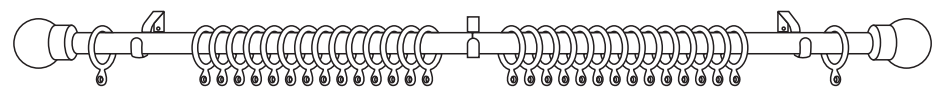
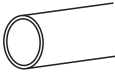
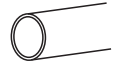
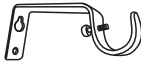
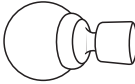


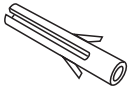




16/19mm metal curtain pole

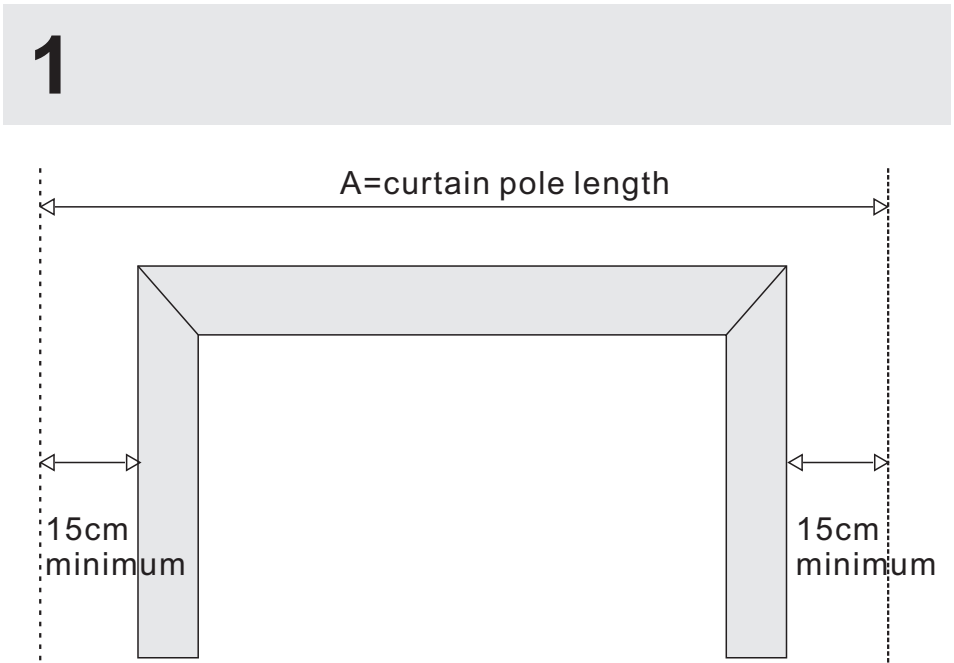
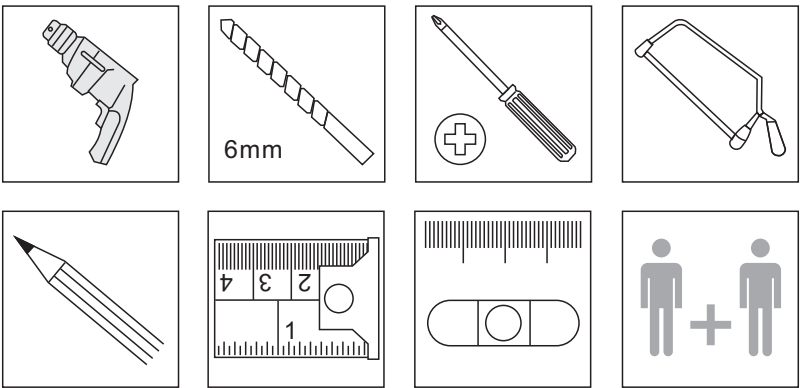


Your Product

	Picture	Fitting parts	0.7m to 1.2m	1.2m to 2.1m	1.65m to 3m
A		16mm pole	1	1	1
B		19mm pole	1	1	1
C		Bracket	2	3	3
D		Finial	2	2	2
E		Rings	12	20	30
G		19mm Plastic insert	1	1	1
H1		Wall plug	4	6	6
H2		Screw	4	6	6

 **Note:** Actual finials and rings may differ from illustration ; Wall plugs & screws provided are suitable for solid walls only. For any other type of wall or ceiling ensure correct wall plugs & screws are used.If in doubt, seek professional advice.

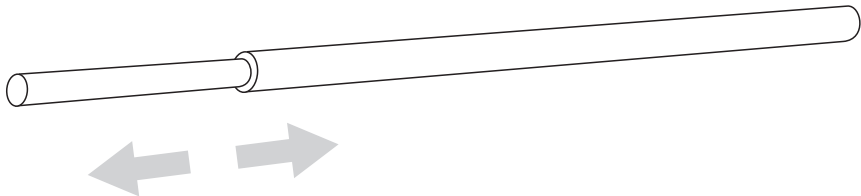
You will need



For larger windows and thicker curtains, this dimension can be increased so the curtains don't obstruct the windows when open.

3 Adjust the pole and accessories according to the window size.

Adjust the pole to fit the window (Pole length A)



2



[C]



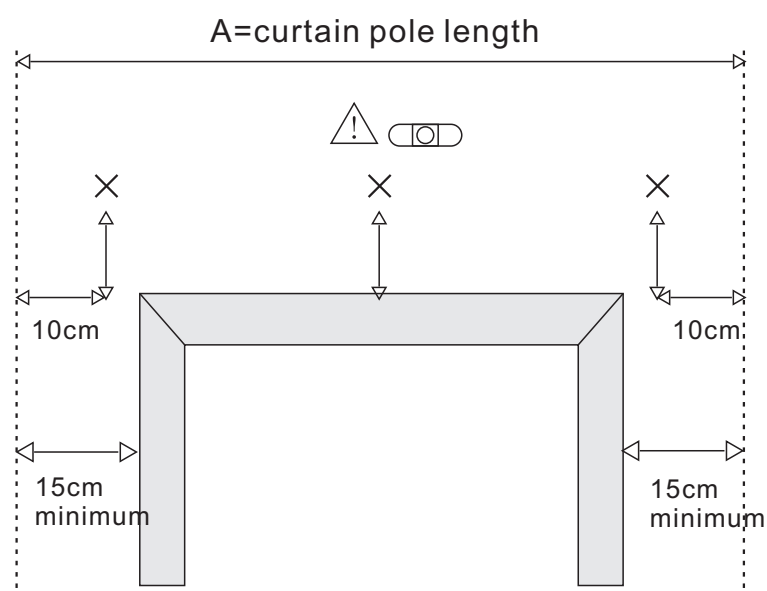
[H1]



[H2]

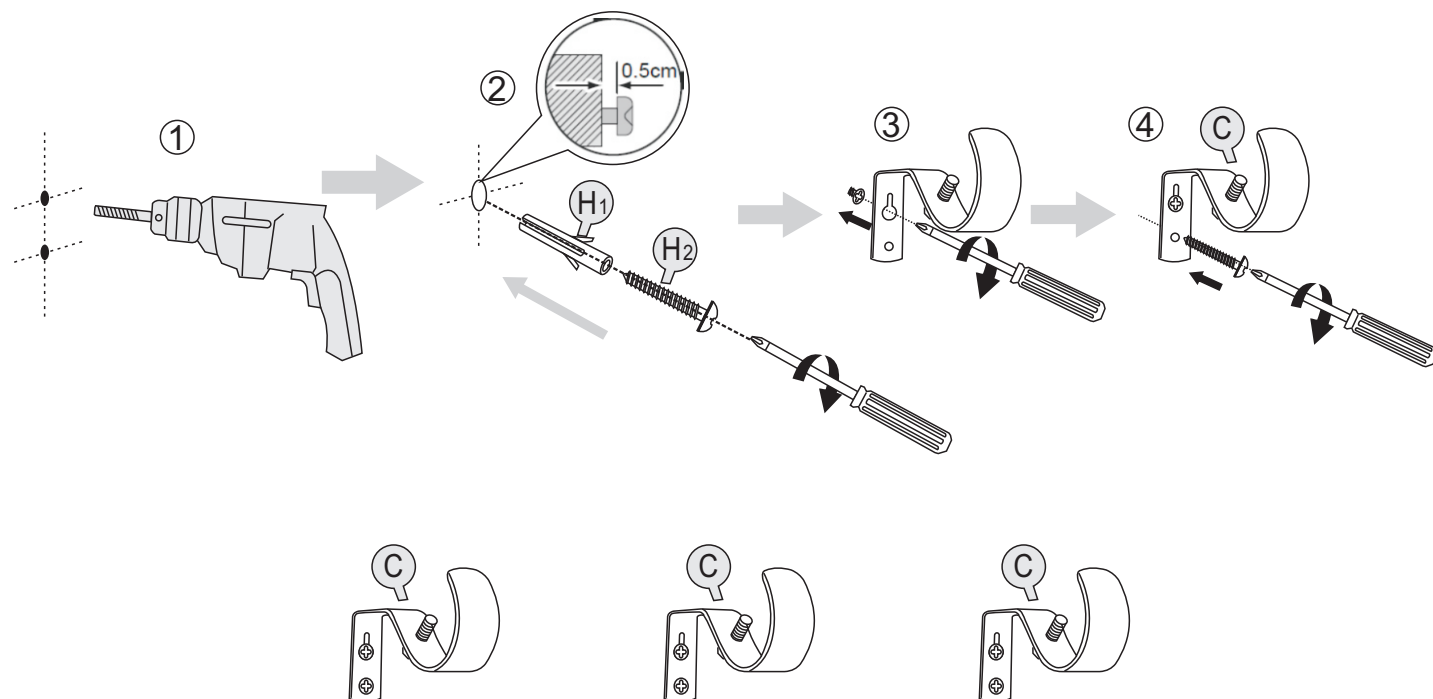
**Note :**

Please ensure the correct wall plugs are used to suit your wall type.
 Wall fixing kit supplied for solids walls only.
 When drilling into walls check that there are no hidden electrical wires or water pipes.
 If a non-solid wall use appropriate wall fixings.
 Please refer to the guide on the reverse of these instructions.
 If in doubt seek professional advice.



The end brackets must be positioned 10cm in from the end of the pole.
 If a centre bracket is required, please position this in the centre between the two end brackets.
 Mark the position on the wall ensuring they are level.

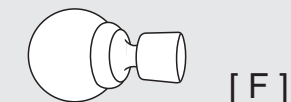
	0.7m to 1.2m	1.2m to 2.1m	1.65m to 3m
	2	3	3



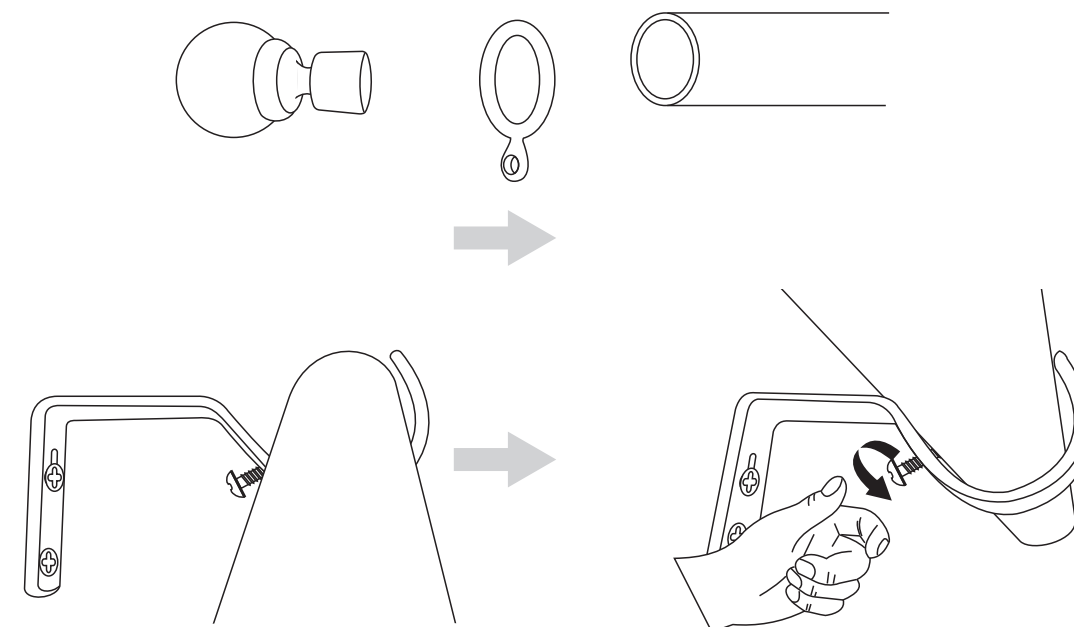
4



[E]



[F]

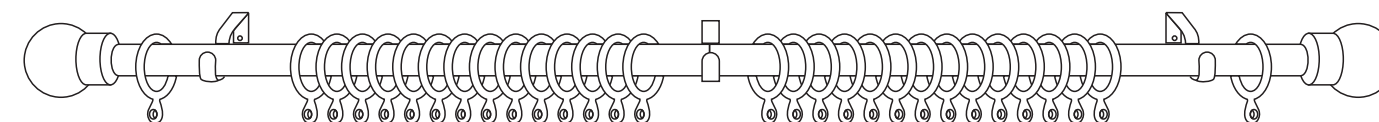


Tighten the bracket screw



Note : Bracket screws to secure the poles are pre-fitted to the brackets, the curtain poles must be secured with the bracket screws.

5



The pole is now ready to accept curtains by slipping hooks through the eyelets on the rings

After assembly, wipe the pole with a dry cloth to remove any fingerprints. To maintain the smooth performance of your pole, periodically wipe the pole with furniture polish.

Please note that specifications of fittings may vary from those illustrated. Retain for future reference. Periodically check and re-tighten fixings.