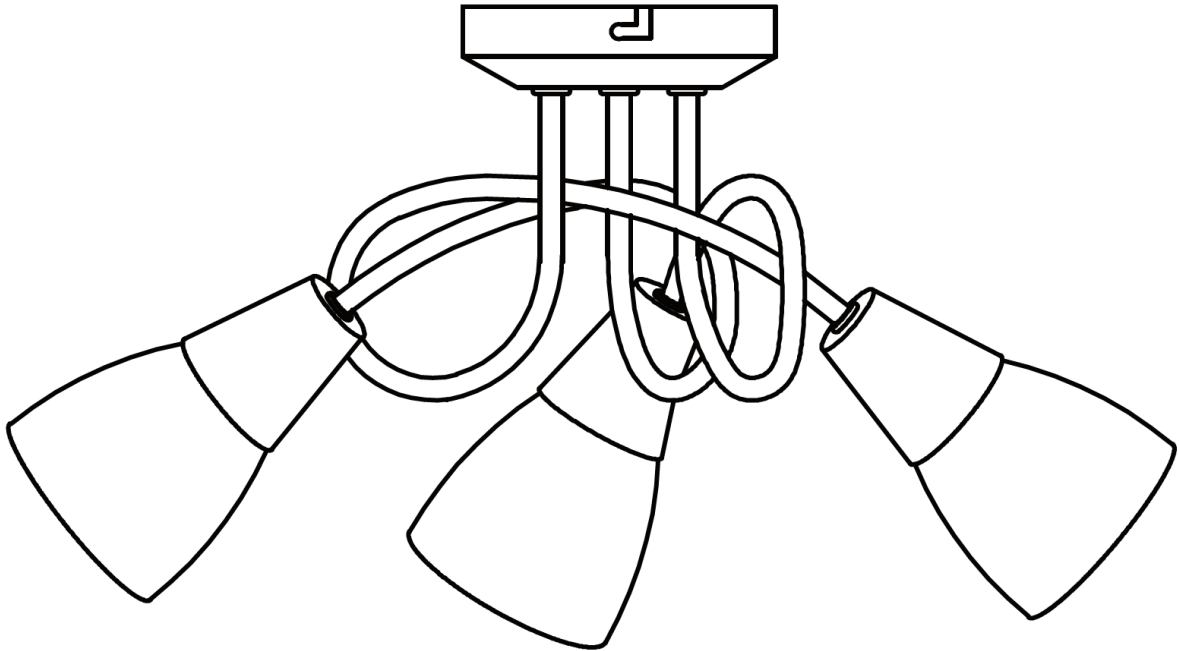


HM CURICO 3 LIGHT CEILING FLUSH CHROME GLASS OPAL 8030209

Installation and User Instructions—Please Keep for Future Reference

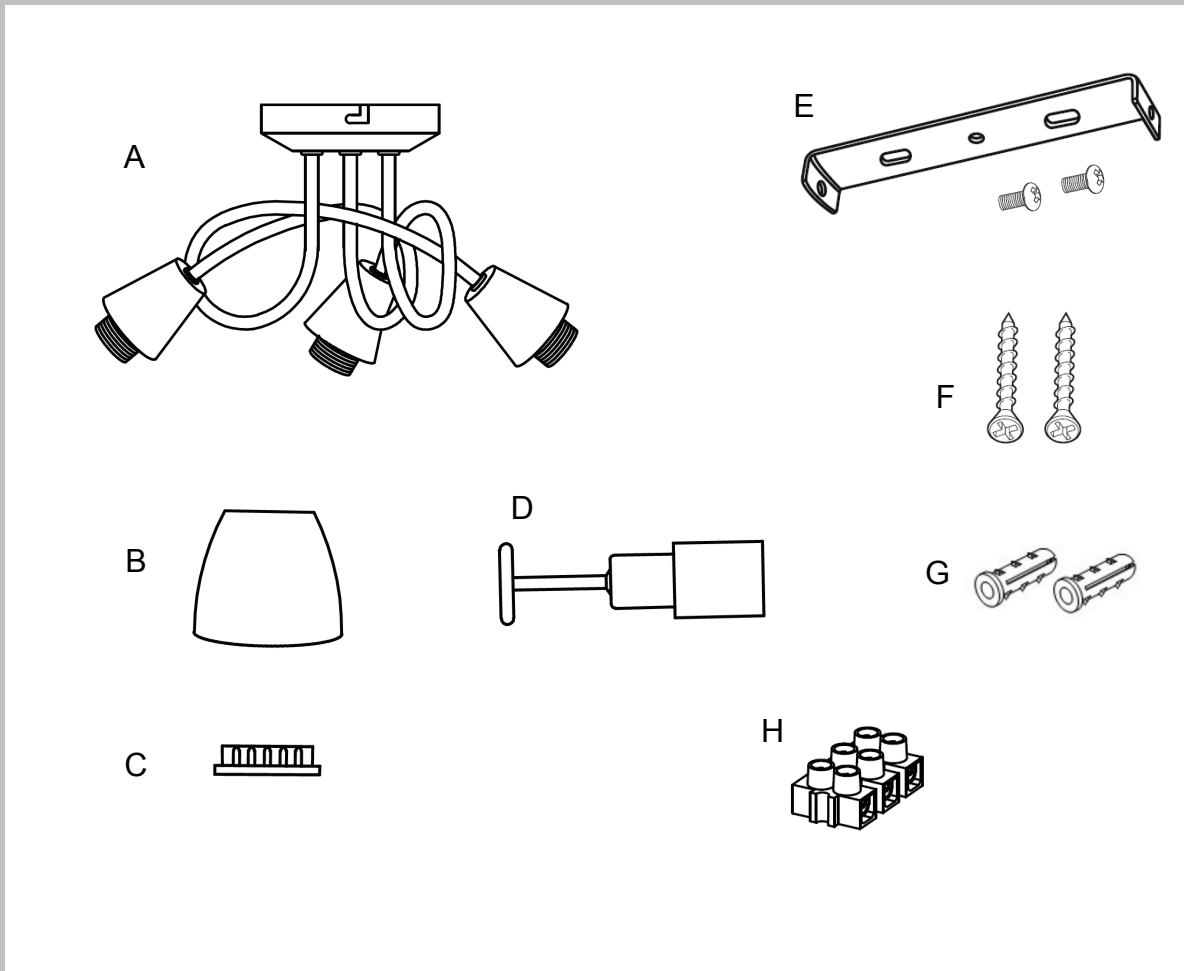


Important –Please read these instructions fully before using
If you need help please call our **Customer Services** on 0345 640 3030

Contents

Section	Page
Parts and Component list	2
Safety Information	3
Maintenance	3
Installation	4

Parts and Components Listing



A: Fitting (Pre-wired) x 1

B: Glass Shade x 3

C: Shade ring x 3

D: Shade ring tool x 1

E: Fixing bracket including 2 screws x 1 (fitted on ceiling plate)

F: Fixing screws x 2

G: Ceiling plugs x 2

H: Connector block x 1

Safety Information

IMPORTANT – Please read these instructions fully before installation and keep for future reference

Your product is produced in conformity with all relevant safety regulations relating to electrical appliances. If in doubt about fitting this product, please consult a qualified electrician.

IMPORTANT -This product has been designed for non-professional, domestic use only.

IMPORTANT - Carefully unpack and examine the product for any damage. If you think there is a defect, **do not** use the product and contact our customer services on : **0345 640 3030**.

IMPORTANT - Dispose of all packaging correctly and responsibly and in accordance with all local laws and regulations. Never leave packaging components within reach of children as they can be a source of danger.

IMPORTANT - Electrical connections must be carried out by a suitably qualified person and in accordance with all relevant local building and installation regulations. If in doubt consult a qualified electrician.

IMPORTANT – This fitting must be permanently wired into electricity supply.

IMPORTANT – Before inserting or replacing bulb(s) ensure the power is switched off and the bulb(s) have cooled down..

WARNING – This is a Class I product and requires an earth connection. This fitting must be permanently wired into the electric system.

WARNING – Always shut off power to the circuit before starting installation work.

WARNING - Accessible parts become hot during use, young children **must** be kept away.

WARNING – Do not modify or alter any product before or after installation. This may render the product un-safe.

WARNING - This product is not intended for use by persons (including children) with reduced physical, sensory and mental capabilities, or lack of experience and knowledge, unless they have been given supervision or instruction concerning use of the product by persons responsible for their safety.

WARNING - Children should be supervised to ensure that they do not play with the product.

WARNING - Do not mount this fitting in a damp atmosphere.

WARNING – The luminaire should be positioned so that prolonged staring into the luminaire at distance closer than 0.2m is not expected.

CAUTION - Ensure the power is switched off before cleaning or carrying out any maintenance.



Maintenance

Maintenance

CAUTION! Always disconnect power supply when servicing or cleaning.

Cleaning

- Use a clean dry soft or slightly damp cloth.
- Do not use abrasive cloths or polishes as this may cause damage to the product.

Changing the bulb

IMPORTANT! Ensure that the bulb has cooled down before replacing.

Ensure that the power supply has been disconnected.

Installation

Installation

IMPORTANT ! - Electrical connections must be carried out by a suitably qualified person and in accordance with all relevant local building and installation regulations. If in doubt consult a qualified electrician.

Installation

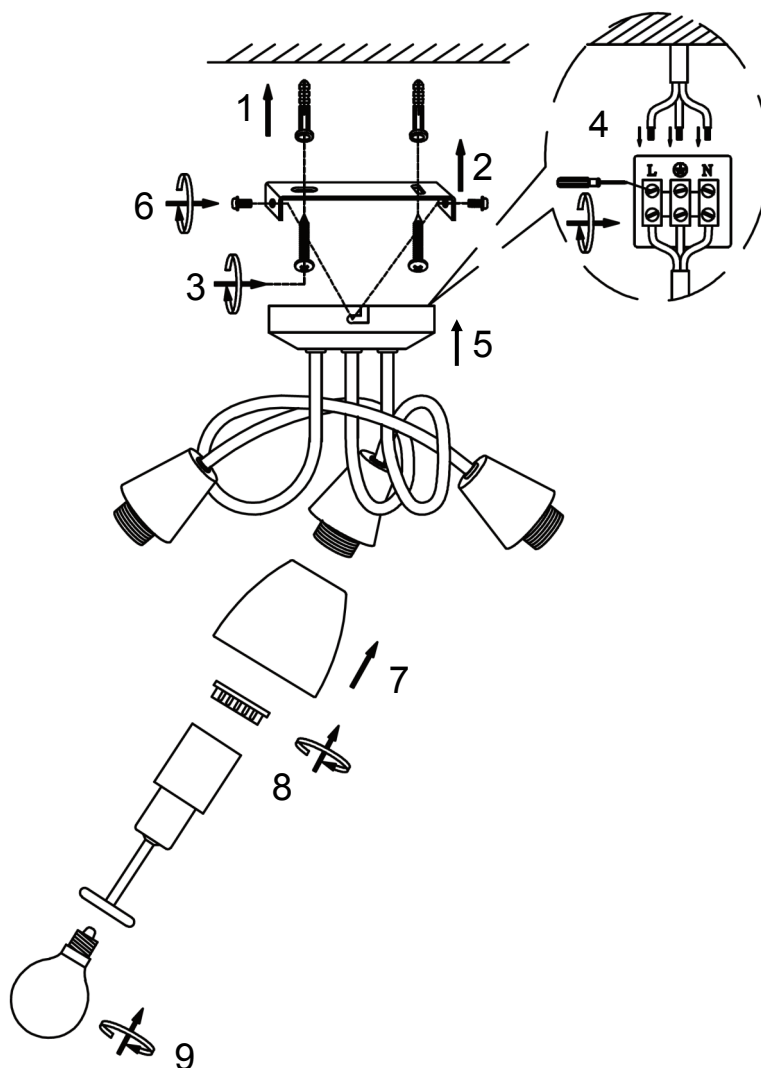
1. Remove the fixing bracket from the ceiling can, using as template mark two holes on the ceiling, using a drill, drill the holes previously marked and insert suitable ceiling plugs.
2. Place the fixing bracket over the holes.
3. Use the two fixing screws provided to secure fixing bracket to the ceiling joist.
4. Connect the supply wires to the terminal block, opposite the corresponding wires from the fitting (Dia.1). (Ensure that connections are tight and no loose strands of wire are left out of the connector block).
5. Place the fitting over the fixing bracket.
6. Screw the fitting onto the fixing bracket using the side screws provided.
7. Place the glass shades over each lamp holder.
8. Secure Glass shades in place screwing shade rings onto the lamp holders with shade tool provided.
9. Screw bulbs (not supplied) into the lamp holders. (Wattage & bulb type stated on the fitting).

Switch on the mains supply and test the fitting.

REPLACEMENT LAMP

We recommend LED lamps only.
(Ensure same lamp brand and specification for each lamp holder)

Maximum wattage – See lamp holder
Light bulb shape - See lamp holder



Dia. 1

