



Getting started with RICOH THETA

Easy to follow Instructions

Have a virtual
experience
of being
there.



View captured images on a smartphone to
enjoy the full 360° experience in all directions.

*A dedicated smartphone application is required to enjoy images taken by RICOH THETA.



Download the
dedicated app!



360° horizontally

360° vertically

Expanding

Decreasing



What can you do with the RICOH THETA ?

Shoot

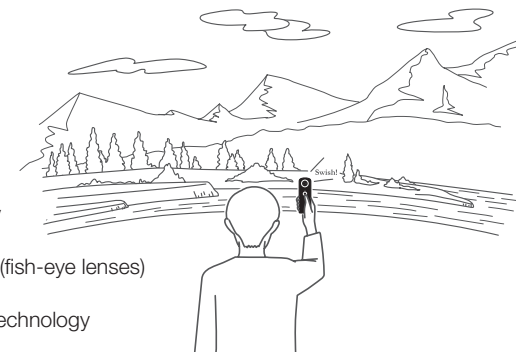
Record an entire scene with a single shot.

By using the application, RICOH THETA
also enables shooting manually or by
remote control.



RICOH THETA technology

Two super-wide-angle lenses (fish-eye lenses)
+
Real-time image processing technology
=
Immersive 360° spherical images



View

By using the application, view a 360° picture or video.



Watch your favorite parts from a
360° picture or video simply by
swiping and pinching. With VR
headset, the image on the display
moves in step with you.

Basic application



Enjoy

Edit in various fun ways and share worldwide.

You can use various SNS and email
services to easily share 360° images
with your friends, and using the editing
app lets you enjoy the content in even
more ways.

Image editing apps

THETA+ For 360° pictures

VIDEO+ For 360° videos

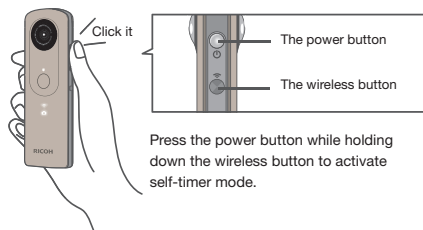


Shooting pictures



Taking Still Images

1. Turn the power on.



2. Hold it still and press the shutter button.



*Recorded images are stored in the camera's built-in memory.

Explore Creative Shooting Positions!



Shoot from above your head when you don't want to stand out in the picture.

It's a good idea to bend your elbow a little when shooting.



Shooting Remotely

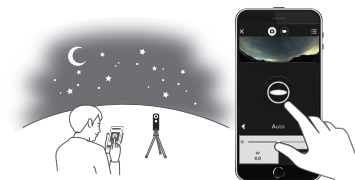
1. Connect THETA with a smartphone over Wi-Fi and launch the THETA S app.

- Basic application -



*A connection setup is necessary when connecting RICOH THETA to a smartphone for the first time. For connection methods, refer to the "Quick Start Guide" included with the product.

2. Tap the Button on the screen to release the shutter



*Wireless LAN can be connected up to approx. 10 metres away.

The LIVE view function of the basic application for RICOH THETA S allows a photo to be taken by simulating on a smartphone.

*In still picture mode *Turn the smartphone's Wi-Fi mode on.

You can change the shooting mode to make various adjustments including brightness and color hues



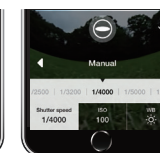
Auto shooting



Shutter Priority



ISO Priority



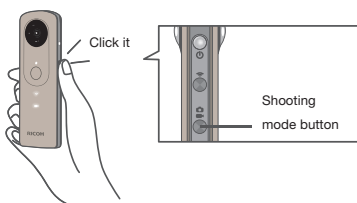
Manual

Shooting videos



Shooting Videos

1. Press the shooting mode button and select the video mode.



2. Press the shutter button to start video shooting.



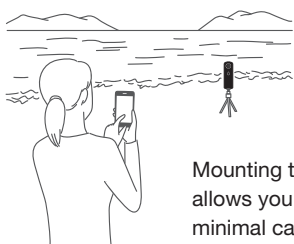
Taking a video by remote control

1. Connect THETA with a smartphone over Wi-Fi and launch the THETA S app.
2. Tap to start recording, and tap again to stop.

- Basic application -
 RICOH THETA S



Fix the THETA in place when shooting!



Mounting the THETA on a tripod allows you to shoot video with minimal camera shake.

Fixing the THETA in place when shooting will allow for natural viewing, even with a VR headset.



Features only available with the RICOH THETA V

4K

4K video

Capture high-quality video at 30 fps in 4K (3840 x 1920 pixels) resolution.



360° spatial audio

Enjoy audio virtual reality thanks to the built-in 4-channel microphone.

The dedicated 3D microphone lets you enjoy VR with even better sound quality. *Optional

4K LIVE

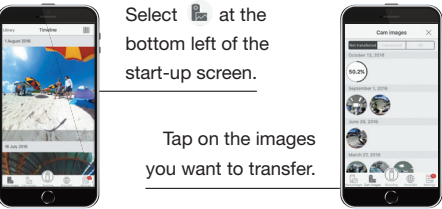
4K live streaming

You can output 360° video at 30 fps in 4K (3840 x 1920 pixels) resolution and in real time.

View your images

Transferring to a Smartphone

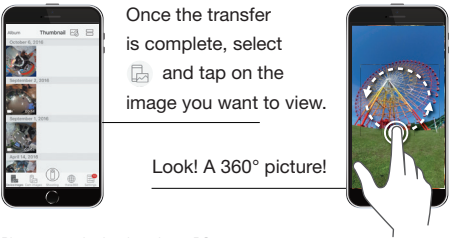
Launch the basic app, select [Cam images] and tap the images you want to transfer.



*Turn the smartphone's Wi-Fi mode on.


Viewing on a Smartphone

Select [Device images] and tap on the image you want to view.



*Pictures can also be viewed on a PC.
*Once an image has been transferred it is saved.

Viewing in VR

Select the image you want to view in the basic app, and tap  at the bottom right of the image. Choose single lens or twin lens.



*VR viewing may be unavailable on some Android devices.

Enjoy virtual experiences with a VR headset

Viewing in single lens mode

You can enjoy images with just your smartphone!



Viewing in twin lens mode

Place your smartphone in a VR headset to enjoy the image.



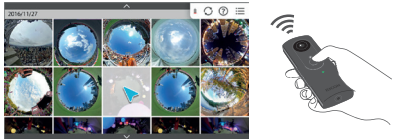
*Commercially available VR headsets can be used.
*Consult the instruction manual for each product for information on recommended ages.

Watch on TV

Features only available with the RICOH THETA V



Hold down the mode button to enjoy 360° experiences with the THETA V acting as the remote control



*A wireless display adapter is required.
Refer to our website for compatible products.



Features only available with the RICOH THETA V

Videos captured in 4K video mode support the 360° spatial audio feature. The VR view linked with sound will make you feel as though you are really there.

* VR viewing may be unavailable on some Android devices.
* Commercially available VR headsets can be used.
* Consult the instruction manual for each product for information on recommended versions.

Viewing on PC

Launch the PC app and drag-and-drop the image you wish to view to enjoy it in 360°



Samples



Check out a sample here



Photo by William Pei Yuan



Check out a sample here



Check out a sample here



Time-lapse Video

Check out a sample here



Editing Still Images / Editing Videos

The THETA+ and THETA+ Video smartphone apps are specially designed for editing still images and video, respectively. As well as editing still images and video in various ways, you can also save them on your smartphone and share them with your friends.



THETA+ For still images

- View (view selection)
- Filters (colour tone change)
- Image correction
- Stamp
- Text
- Cropping (cutting out element)
- Time lapse editing
- Sharing
- Animation



THETA+ Video For videos

- View (view selection)
- Filters (colour tone change)
- Trimming (cutting video length, adjusting playback speed)
- BGM
- Cropping (cutting out element)
- Sharing

*Operation may vary depending on the OS. As of September 2017

Display 360° content in various ways

Select from four different views to create images unique to RICOH THETA. *1



Little planet



Mirror ball



Flat



Straight

Create animation *1



A cropped video that looks like a 360° still panoramic image is produced automatically. Stand out on Instagram.

Make changes to videos *2



You can cut videos down to the desired length and modify the playback speed. By adding your favorite background music, you can add drama to your movies.

Save your images in two ways: 360° image or cropped image



360° images

Even after editing, you can spin and rotate the image. If posted to Facebook or YouTube (videos only), the 360° content can be experienced in VR using a smartphone.



Cropped images

This mode lets you save flat images and videos. Edit 360° images and videos on your own into eye-catching ones to post on Instagram and other social media. It also allows you to cut part of an image at your desired aspect ratio*1 to save and print it just like an ordinary photo.



@jambo_hot_dog



Markus Ortner/@geek7

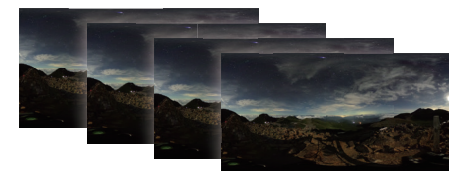


Have fun decorating with stamps and text *1



Choose from around 100 stamps and enter your own text to decorate your 360° images.

Create time lapse videos *1



This 360° time lapse video mode lets you create fast motion video by combining multiple recorded still images using the interval shooting feature.

*1: Function only available in THETA+ (for still images) *2: Function only available in THETA+ Video (for video)

Share your images

Enjoy pictures and videos by sharing

You can easily post to SNS sites such as Twitter and Facebook from the basic app or editing app.



Using SNS

360° images taken with RICOH THETA can be enjoyed on supported SNS sites.

Compatible SNS (examples):



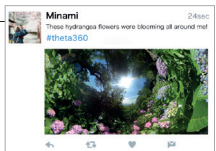
Posting to Facebook

Spherical still images and videos can be posted as-is to Facebook, allowing your friends to view your content in 360°.



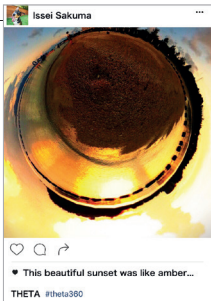
Posting to Twitter

You can upload content to the Ricoh cloud space (theta360.com) and place a link in a Twitter post. The linked page can be viewed in 360°.



Posting to Instagram

Using the THETA+ and THETA+ Video editing apps, you can share your proud creations with friends. Posting creative THETA images to Instagram is a popular style!



Posting to Youtube

YouTube supports 360° video. With the YouTube app you can easily share virtual reality experiences in VR view (twin lens).



Posting to Google Street View

With the Street View app, you can do everything from shooting THETA images with remote control to uploading 360° images. Create your own original street view images out of common sights or scenery during travel.

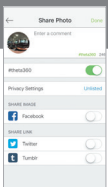


*These are images of submitted pictures.

Sharing without Posting to SNS

If you upload images to the Ricoh cloud space (theta360.com) without posting to an SNS, you can share the image only with those you send the URL to.

Turn off all SNS selections.



Check the uploaded image.

Send the URL

Explore Various Shooting Scenarios

Travel



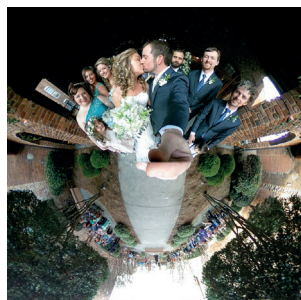
Underwater



Mountain climbing



Wedding Ceremonies, time with family and friends... or just for fun !



@rallycrosslife



@jambo_hot_dog

We recommend shooting still images or video even on regular days when nothing much is happening.

Even when it's not a particularly special day, you can record precious moments. As time passes, you will look back on moments when a child was still a baby, having fun with a grandparent, or your own younger self and recreate those unassuming daily moments in the vivid detail of a 360° virtual experience.

Optional accessories

THETA accessories to further enhance your experience



Underwater Housing Case TW-1

This waterproof case is rated to a depth of 30 meters, equivalent to JIS Class 8 waterproofing.

*Supports THETA V/S/SC



3D Microphone TA-1

High fidelity 360°spatial audio with excellent directionality 3D microphone developed specifically for THETA V

Other accessories

- Attachment for strap AT-1 (5 colors available) • Soft Case TS-1 (Two Colors) • Hard Case TH-2
- Cable switch CA-3 • Extension Adapter TE-1

Learn more

Go to the Official RICOH THETA accounts

This official account is loaded with information about various 360° works and ways of enjoying RICOH THETA. Follow the account to enjoy RICOH THETA even more.



The RICOH THETA Facebook page offers extensive information including usage tips and stories behind the development of the RICOH THETA.



News related to RICOH THETA is shared.



Filled with RICOH THETA's creative works.



Loaded with tutorials and 360° videos shot using RICOH THETA.

RICOH THETA Official Website : www.theta360.com



The official site helps you get even more out of your THETA with the latest information on THETA and related apps, a sample gallery that allows you to rotate images, and the cloud space, which allow you to post and share the 360° spherical images you have taken.

RICOH THETA V

High-end Model

Record 360° image in high quality with advanced functions



High Resolution

1/2.3 12M CMOS sensor 2 (Output pixel count equivalent to 14M ^{*1})
F2.0 lens • Main processor «Snapdragon»

4K video capture ^{*1}

30 fps • 25 minutes continuous shooting

4K live streaming

Support for 360° spatial audio

Remote Playback

Wireless LAN connection/Bluetooth support

Long exposure (Maximum 60 seconds) ^{*2}

Supports plugins

19 GB Memory • Self-timer
High-speed data transfer ^{*2} • Multi bracket shooting ^{*2}

RICOH THETA SC

Standard-class model

Enjoy simple high performance 360° shooting



High Resolution

1/2.3 12M CMOS sensor 2 (Output pixel count equivalent to 14M ^{*1})
F2.0 lens

Full HD video Capture ^{*1}

30 fps • 5 minutes continuous shooting

Multi bracket shooting ^{*2}

Support for 360° spatial audio ^{*2} ^{*3}

Four Colours

Wireless LAN connection ^{*2}

Long exposure (Maximum 60 seconds) ^{*2}

Lightweight at around 102g

8 GB Memory
High-speed data transfer ^{*2}

^{*1} The resolution of recorded data. The resolution of the spherical video viewed varies depending on the display equipment or the magnification ratio.

^{*2} When RICOH THETA S basic app is used ^{*3} A firmware update is required.

* Check our website for the latest functionality information.

Microsoft and Windows are registered trademarks of Microsoft Corporation in the United States of America and other countries. Mac, OS X, macOS, iPhone, and App Store are trademarks of Apple Inc., registered in the U.S. and other countries. IOS is a trademark or registered trademark of Cisco in the U.S. and other countries and is used under license. Facebook, the Facebook logo and «f» logo are the trademarks or registered trademarks of Facebook, Inc. Twitter, the Twitter logo, Twitter «t» logo and Twitter blue bird are the registered trademarks of Twitter, Inc. in the United States and other countries. Tumblr and the Tumblr logo are the registered trademarks of Tumblr, Inc. Instagram and the Camera logos are trademarks of Instagram, LLC in the United States and elsewhere. Google, Android, Google Play, YouTube and YouTube logo are trademarks or registered trademarks of Google Inc. The Bluetooth® word mark and logos are registered trademarks owned by Bluetooth SIG, Inc. and any use of such marks by Ricoh Company Ltd. is under license. All other trademarks are the property of their respective owners.

RICOH
imagine. change.

RICOH IMAGING EUROPE S.A.S.
Parc Tertiaire SILIC • 7-9, avenue Robert Schuman
B.P. 70102 • 94513 RUNGIS CEDEX • FRANCE
www.ricoh-imaging.eu

As of September 2017
AP1020008401