

HM Maine Coffee Table

Assembly Instructions - Please keep for future reference

806/4402

798/5362

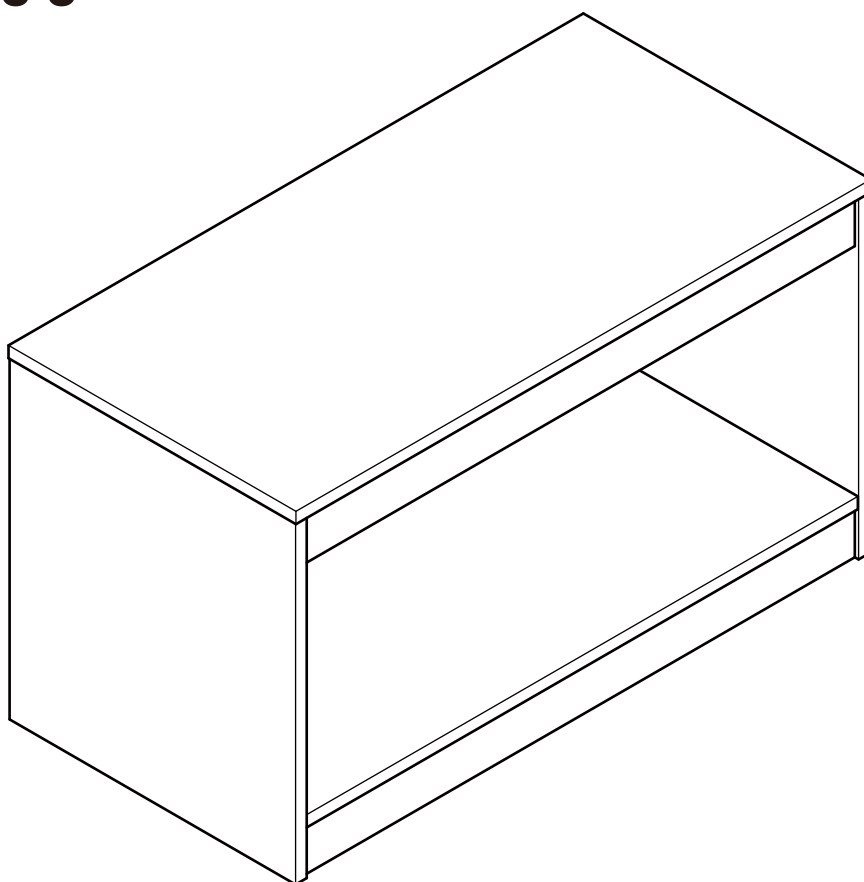
792/8044

764/8070

797/9323

803/2276

H O
M E
BY ARGOS



Dimensions

Width - 80cm

Depth - 40cm

Height - 45cm

Important - Please read these instructions fully before starting assembly

If you need help or have damaged or missing parts, call the **Customer Helpline:**
Argos = 0345 6400800



Safety and Care Advice

Important – Please read these instructions fully before starting assembly

- Check you have all the components and tools listed on the following pages.
- Remove all fittings from the plastic bags and separate them into their groups.
- Keep children and animals away from the work area, small parts could choke if swallowed.
- Make sure you have enough space to layout the parts before starting.

- During assembly do not stand or put weight on the product, this could cause damage.
- Assemble the item as close to its final position (in the same room) as possible.
- Assemble on a soft level surface to avoid damaging the unit or your floor.
- Parts of the assembly will be easier with 2 people.



- To reduce the likelihood of damaging your product please ensure that your power drill is set on a low torque setting.

Care and maintenance

- Only clean using a damp cloth and mild detergent, do not use bleach or abrasive cleaners.
- From time to time check that there are no loose screws on this unit.
- This product should not be discarded with household waste. Take to your local authority waste disposal centre.

Handy Hints

- Assemble all parts and bolts loosely during assembly, only once the product is complete should you fully tighten the bolts
- Regularly check and ensure that all bolts and fittings are tightened properly.

Components - Panels

If you have damaged or missing components, call the
Customer Helpline: Argos = 0345 6400800

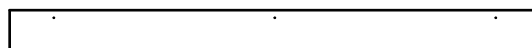
Please check you have all the panels listed below



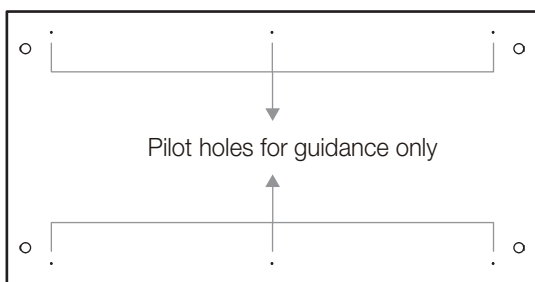
1 Top panel (80 x 40cm)



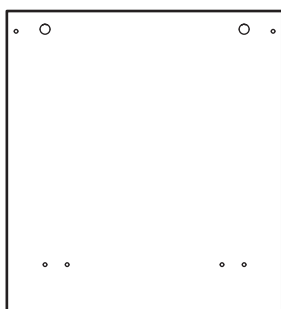
4 Top support x 2 (76.8 x 6cm)



5 Bottom support x 2 (76.8 x 6cm)



2 Bottom panel (76.8 x 39.6cm)








3 Side panel x 2 (43.5 x 39.8cm)

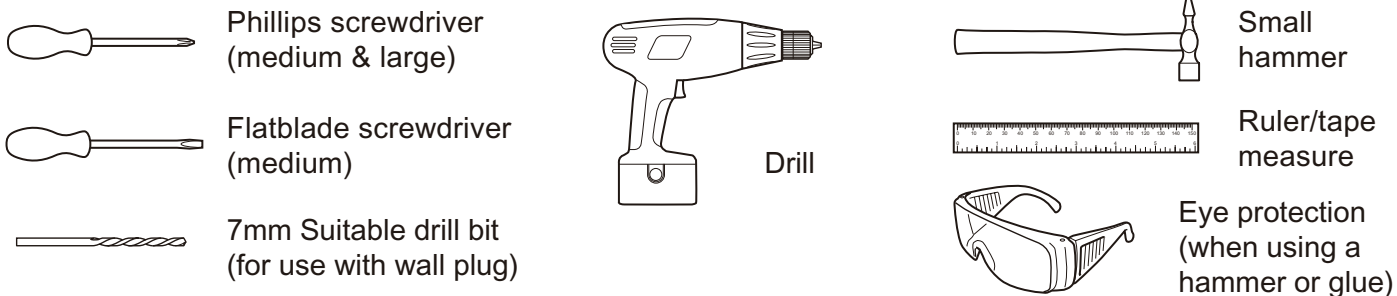
Components - Fittings

Please check you have all the fittings listed below

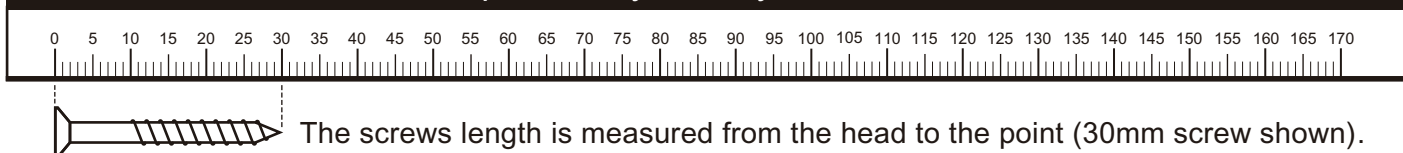
Note: The quantities below are the correct amount to complete the assembly. in some cases more fittings may be supplied than are required.

A  39mm Locking pin x 16	B  30mm Dowel x 8	C  15mm Locking nut x 16
D  15mm Screw x 12	E  Plastic support x 6	

Tools required



Ruler - Use this ruler to help correctly identify the screws



Assembly Instructions

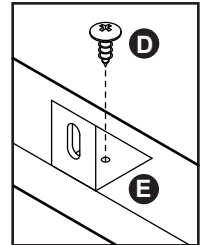
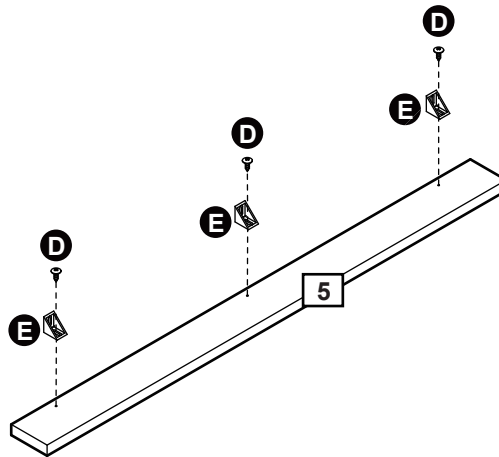
Step 1

Attaching bottom panel

a: Use Screw **D** to fix the Plastic supports **E** onto the Bottom support **5**.

Note: Be sure the edges of the Plastic supports **E** even with the edges of the Bottom support **5**.

a:

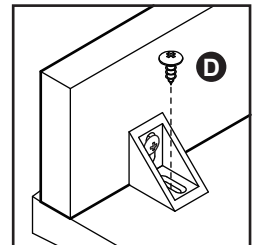
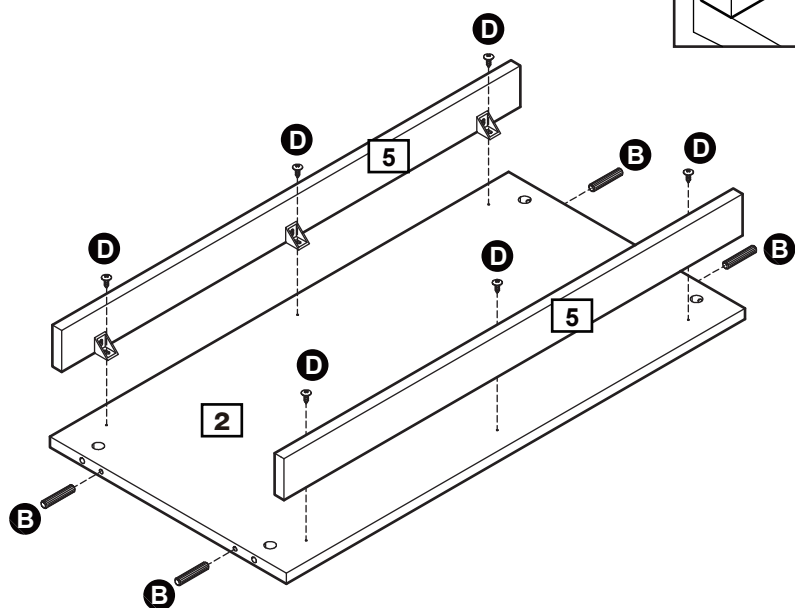


X 2

b: Position the Bottom supports **5** onto the Bottom panel **2** use Screws **D**.

Insert Dowels **B** into the Bottom panel **2**.

b:



Assembly Instructions

Step 2

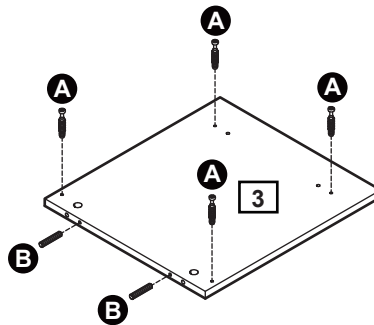
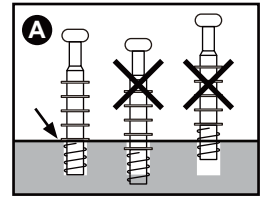
Attaching side panel

a: Screw Locking pins **A** into the Side panel **3**.

Note: Insert locking pins as far as shown.

Do not over tighten.

Insert Dowels **B** into the Side panel **3**.

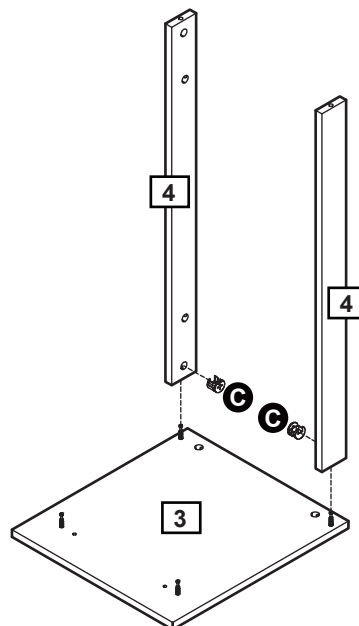
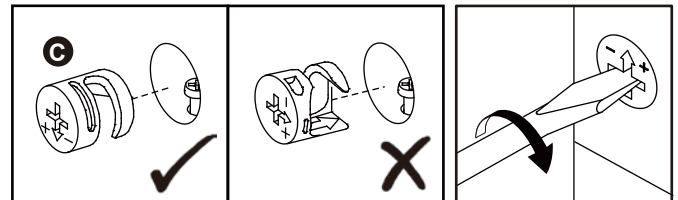


X 2

b: Position Top supports **4** onto the Side panel **3**.

Insert Locking nut **C** into the Top supports **4**.

Use a screwdriver to turn Locking nut **C** clockwise to lock.



Continued on next page.

Assembly Instructions

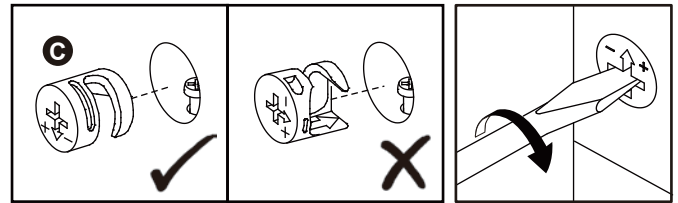
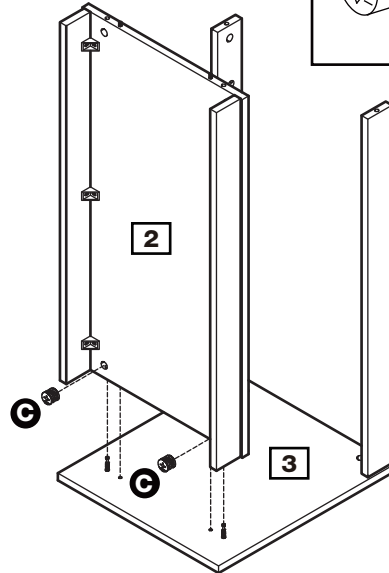
Step 2 - continued

c: Position Bottom panel **2** onto the Side panel **3**.

Insert Locking nuts **c** into the Bottom panel **2**.

Use a screwdriver to turn Locking nut **c** clockwise to lock.

c:

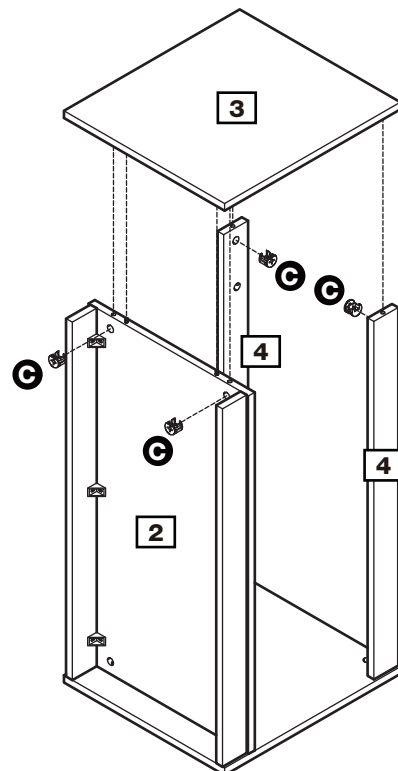
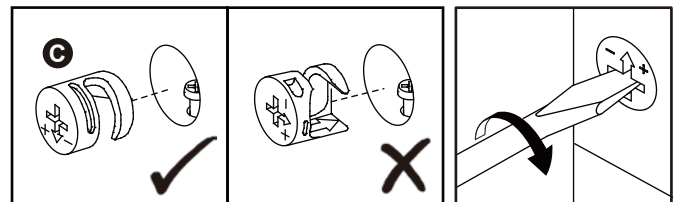


d: Position Side panel **3** onto the unit.

Insert Locking nuts **c** into the Bottom panel **2** and Top supports **4**.

Use a screwdriver to turn Locking nut **c** clockwise to lock.

d:



Assembly Instructions

Step 3

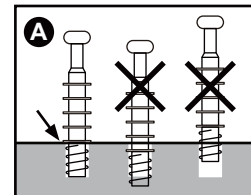
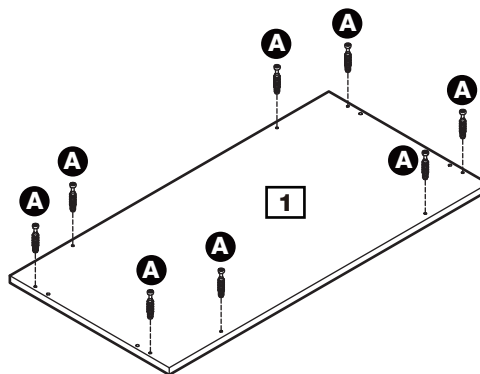
Attaching top panel

a: Screw Locking pins **A** into the Top panel **1**.

Note: Insert locking pins as far as shown.

Do not over tighten.

a:

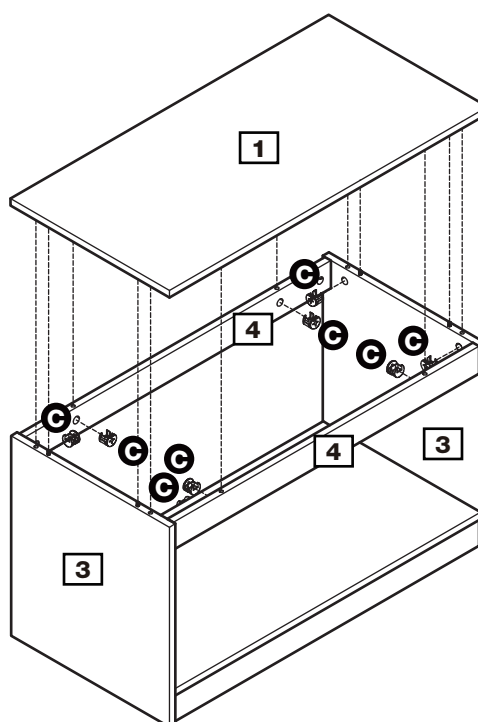
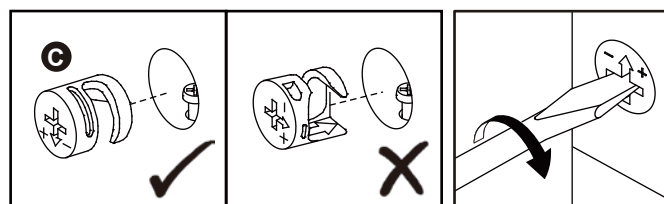


b: Position Top panel **1** onto the unit.

Insert Locking nuts **C** into the Side panels **3**, Top supports **4**.

Use a screwdriver to turn Locking nut **C** clockwise to lock.

b:



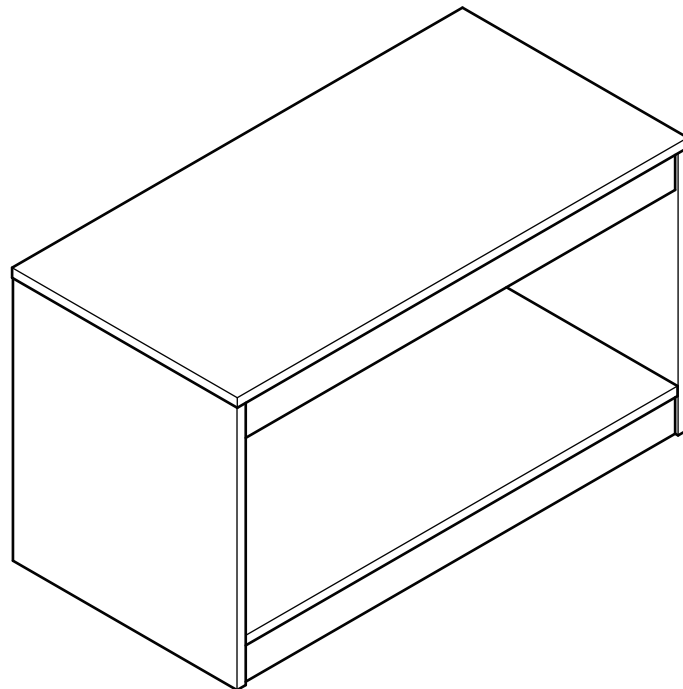
Assembly Instructions

Step 4

Finishing the unit

Note: It would be useful to ask someone to help you at this stage.

With help, place the unit in the intended position.



Assembly is complete.

If you need help or have damaged or missing parts, call the **Customer Helpline:**
Argos = 0345 6400800