

Size: 21cm(w) x 29.7cm(w)
 Color: 1C (Black)

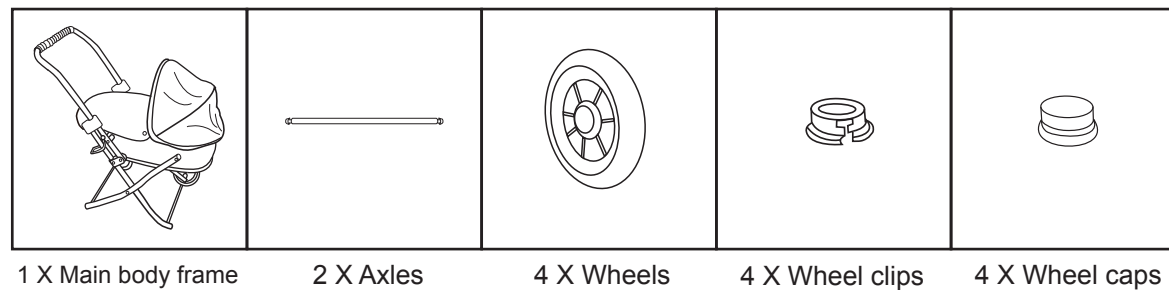
mamas & papas

My First Pram

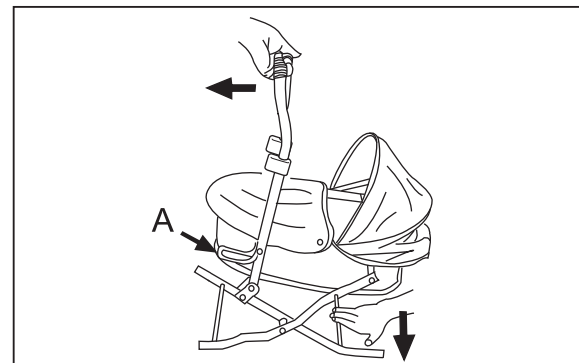
Safety Notes

This item is a toy and not suitable for carrying babies, children or pets.
 Assembly should be carried out by an adult to prevent the item collapsing in use.
 Please remove all packaging attachments before giving this toy to a child.
 An adult should check all mechanisms of this toy regularly.
 Always play under adult supervision
 Warning! Not suitable for children under 36 months. Strangulation hazard due to long cord
 and choking hazard due to small parts.
 Made in China

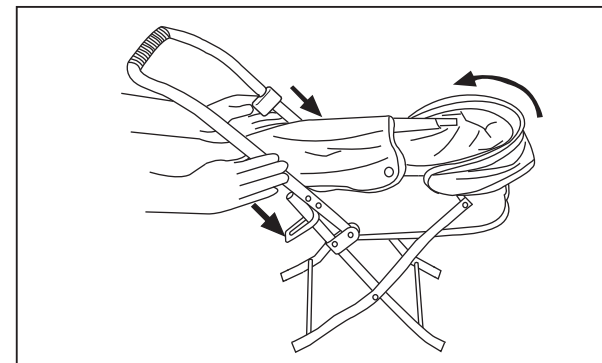
Parts List



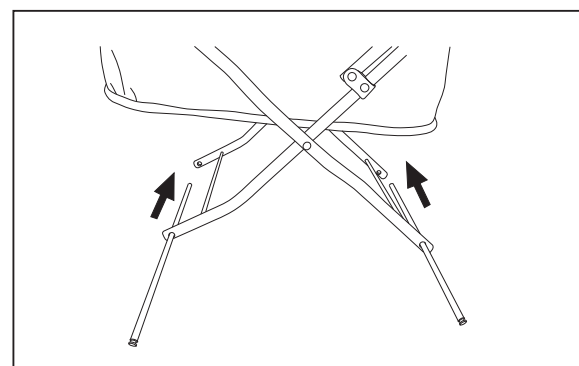
Assembly



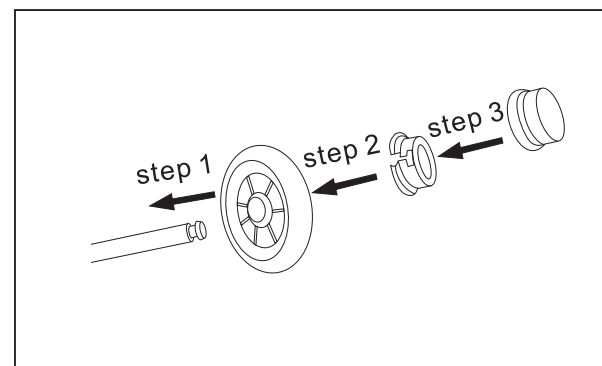
1. Open the main body frame in the direction as shown. Ensure metal safety loops (A) are engaged over both joints.



2. Slide the plastic locks securely into position.

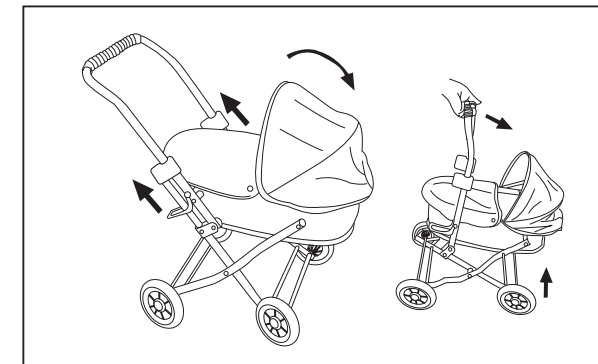


3. Insert the axles into the pram chassis as shown in the picture.



4. Put the wheel, wheel clip and wheel cap on the ends of the axles as shown.

Front



5. To fold, release the plastic locks and metal safety loops together.

Care Instructions

Please wipe clean using a damp cloth with mild detergent if necessary.

Contact Details

If you experience any difficulty with this item or you wish to enquire about any accessories or spare parts, please contact our customer service department on:

customerservice@htigroup.co.uk
 +44 (0)1253 775570

Designed & Manufactured

 HTI Group, Eastham House,
 Copse Road, Fleetwood,
 FY7 7NY, UK 
 www.htigroup.co.uk

 HTI EU Authorised Representative
 The Merrion Buildings -
 Iconic Offices, 18-20 Merrion Street,
 Dublin 2, D02 XH98, Ireland 
 www.htigroup.co.uk

You are advised to keep these details for future reference.

© Mamas & Papas is the trade mark of , and is issued under licence from , Mamas & Papas Limited.

Back