

BUSH

BUSH

Instruction manual

7 Kg Tumble Dryer

DHB7VTDW

DHB7VTDB



Contact:

www.bush-support.co.uk

Helpline: 01759 487838

You'll soon be enjoying your new Tumble Dryer.

It all begins here, with your instructions. Don't worry, there's nothing too technical coming up. Just simple, step-by-step guidance to get you up and running quickly. Sound good? Then let's get started.

Help and Guidance

We're here to help you get the most from your Tumble Dryer. Should you require any guidance, a simple solution can often be found online at:

www.bush-support.co.uk

If you still require further assistance, call one of our experts on **01759 487838**.

If you require any technical guidance or find that your product is not operating as intended, a simple solution can often be found in the **Troubleshooting** section of these instructions.

Contents

1	Safety information		7	Product support	
	Safety information	6		Troubleshooting	30
2	Getting to know your Tumble Dryer			Help and assistance	31
	Ready? Let's begin	10		Disposal	32
	Components	11		Guarantee	33
	Accessories	12			
3	Installing your Tumble Dryer				
	Installation requirements	14			
	Connections	15			
	Electrical connection	16			
4	Functions				
	Functions	18			
5	Using your Tumble Dryer				
	Using your Tumble Dryer	22			
6	Care and Maintenance				
	General	26			
	Technical specifications	27			
	Product fiche	28			

Product support

Help is always at hand



Call us now and activate your 12 month guarantee

Thank you for choosing Bush. Your new product is guaranteed against faults and breakdowns for 12 months. Don't forget to register it with us today so we can provide you with our best possible after-sales service and useful updates.

www.bushregistration.co.uk

FREEPHONE*

0800 597 8548

Lines are open 8am - 8pm, 365 days a year. *Calls may be recorded and monitored.

Your Bush Guarantee

This product is guaranteed for twelve months from the date of original purchase. Any defect that arises due to faulty materials or workmanship will be repaired free of charge (or if applicable the product will be replaced or the purchase price refunded) where possible during this period by the dealer from who you purchased the unit.

The guarantee is subject to the following provisions:

- The guarantee does not cover accidental damage, misuse, cabinet parts, knobs or consumable items.
- The product must be correctly installed and operated in accordance with the instructions contained in the manual.
- It must be used solely for domestic purposes. The guarantee will be rendered invalid if the product is re-sold or has been damaged by inexpert repair.
- Specifications are subject to change without notice.
- Bush disclaim any liability for loss or damage arising from the breakdown of the product.
- This guarantee is in addition to and does not diminish your statutory or legal rights.

Important Data Protection Information

To find out how we and Domestic & General Insurance Plc use your data please refer to the guarantee registration material or visit www.bushregistrations.co.uk

Guarantor: Argos Limited • 489 • 499 Avebury Blvd. • Milton Keynes • MK9 2NW

or online at www.bush-support.co.uk if you still require further assistance, call one of our experts on 01759 487838.

Product support

Help is always at hand



This appliance complies with the following EEC directives:
Low Voltage Directive (2014/35/EU)
EMC directive (2014/30/EU)

Disposal



This appliance/fitting is marked according to the European directive 2012/19/EU on Waste Electrical and Electronic Equipment (WEEE).

By ensuring this product is disposed of correctly, you will help prevent potential negative consequences for the environment and human health, which could otherwise be caused by inappropriate waste handling of this product.

The symbol on the product, or on the documents accompanying the product, the **crossed out wheellie bin** symbol, indicates that this appliance/fitting may not be treated as household waste. Instead it shall be handed over to the applicable collection point for the recycling of electrical and electronic equipment.

Disposal must be carried out in accordance with local environmental regulations for waste disposal.

For more detailed information about treatment, recovery and recycling of this product, please contact your local authority, your household waste disposal service or the retailer where you purchased the product.

Remember: Old machine must be disposal of carefully – Cut off the mains plug and /or remove the door before disposal – if in doubt, contact your local council for details on how to dispose of an old dryer.

If you require any technical guidance or find that your product is not operating as intended, a simple solution can often be found in the **Troubleshooting** section of these instructions.

Safety information

1



Safety information

Important - Please read these instructions fully before installing or operating

Before use

- The installation of this appliance is best carried out by 2 people.
- Dispose of all packing carefully and responsibly.
- The appliance is designed for **indoor use only** and must be protected from rain, moisture and extreme temperature variations.
- This appliance is designed for household use. **Do not** use the appliance for industrial and commercial use, or any other purpose.
- The appliance **MUST** be positioned on a firm level base.
- **Do not** splash water on the appliance. It may cause electrical parts to fail and result in an electric shock.
- For appliance with ventilation openings in the base, the carpet **must not** obstruct the openings.
- The appliance **must not** be installed behind a lockable door, a sliding door or a door with a hinge on the opposite side to that of the tumble dryer, in such a way that a full opening of the tumble dryer door is restricted.
- **Do not** sit, stand or place any other heavy objects on top of the appliance. This could result in injury or damage to the appliance.
- **Do not** allow children to play with the appliance to avoid the risk of entrapment and suffocation.
- Keep ventilation opening, in the appliance enclosure or in the built-in structure, clear of obstruction.
- The lint trap has to be cleaned frequently, if applicable.
- Clean lint screen before or after each load.
- Never use the dryer without the lint filter.

During use

- This appliance can be used by children aged from 8 years and above and persons with reduced physical, sensory or mental capabilities or lack of experience and knowledge if they have been given supervision or instruction concerning use of the appliance in a safe way and understand the hazards involved. Children shall not play with the appliance. Cleaning and user maintenance shall not be made by children without supervision.
- The tumble dryer is not to be used if industrial chemicals have been used for cleaning.
- Lint must not be allowed accumulate around the tumble dryer.
- Do not dry unwashed items in the tumble dryer.
- Items that have been soiled with substances such as cooking oil, acetone, alcohol, petrol, kerosene, spot removers, turpentine, waxes and wax removers should be washed in hot water with an extra amount of detergent before being dried in the tumble dryer.
- Items such as foam rubber(latex foam), shower caps, waterproof textiles, rubber backed articles and clothes or pillows fitted with foam rubber pads should not be dried in the tumble dryer.

If you require any technical guidance or find that your product is not operating as intended, a simple solution can often be found in the **Troubleshooting** section of these instructions.

Product support

Help is always at hand

Help and assistance

If you require any technical guidance or find that your Tumble Dryer is not operating as intended, a simple solution can often be found in the **Troubleshooting** section of these instructions or online at www.bush-support.com

If you still require further assistance, call one of our experts on **01759 487838**. To help give you a fast and efficient service please have the following information ready:

Model Ref.

You can find these on the rating plate - a small information panel (usually a sticker or metal plate) on the rear of your appliance

Serial number

Date of purchase

This will be shown on your receipt

Local call rates applies*

Lines open 8am-7pm Monday to Saturday and 10am-4pm Sunday.

*Calls to Argos enquiry lines may attract a charge and set up fee from residential lines depending on your call plan/tarif. Mobile and other providers costs may vary, see www.bt.com/pricing for details.

For Security and training purposes, telephone calls to and from customer service centres maybe recorded and monitored. Calls from Republic of Ireland will attract international call charges.

or online at www.bush-support.co.uk If you still require further assistance, call one of our experts on **01759 487838**.

Product support

Help is always at hand

Troubleshooting

1. Tumble dryer doesn't operate?

Please make sure the power plug was inserted well and check the protection devices and fuses.

2. Laundry has shrunk?

Please review the advice on the garments label to select the suitable program setting.

3. Laundry not dry enough at the end of drying?

Please reduce the quantity of clothes for drying each time and clean the lint filter after each use.

4. Laundry too dry?

Please take out the clothes immediately while the drying cycle is finished and review the advice on the garments label to select the suitable program setting.

5. The tumble dryer is noisy?

Please make sure the tumble dryer was installed on an even surface and leveling the appliance.

6. Where can I buy a replacement lint filter?

If you wish to buy a replacement lint filter assembly, please contact the products service line on 01759 487838

If you require any technical guidance or find that your product is not operating as intended, a simple solution can often be found in the **Troubleshooting** section of these instructions.



Safety information

Important - Please read these instructions fully before installing or operating

- Fabrics softeners, or similar products, should be used as specified by the fabric softener instructions.
- The final part of a tumble dryer cycle occurs without heat (cool down cycle) to ensure that the items are left at a temperature that ensures that the items will not be damaged.
- Remove all objects from pockets such as lighters and matches.
- **WARNING:** Please be careful when removing clothes from dryer as they may be hot.
- Children of less than 3 years should be kept away unless continuously supervised.
- Do not attempt to repair the appliance yourself.
Contact the Customer Helpline: 01759 487838.
- If the supply cord is damaged, it must be replaced by the manufacturer, its service agent or similarly qualified persons in order to avoid a hazard.
- Adding an item of clothing or materials that have come in contact with oil can be hazardous when in a tumble dryer. Avoid adding such items into your appliance.
- Please avoid adding items of clothing into your tumble dryer with vegetable oil or hair care and cleaning products. This could be hazardous.
- The maximum mass of dry textile material is 7kg
- That adequate ventilation has to be provided to avoid the back flow of gases into the room from appliances burning other fuels, including open fires.
- **WARNING:** Never stop a tumble dryer before the end of the drying cycle unless all items are quickly removed and spread out so that the heat is dissipated.



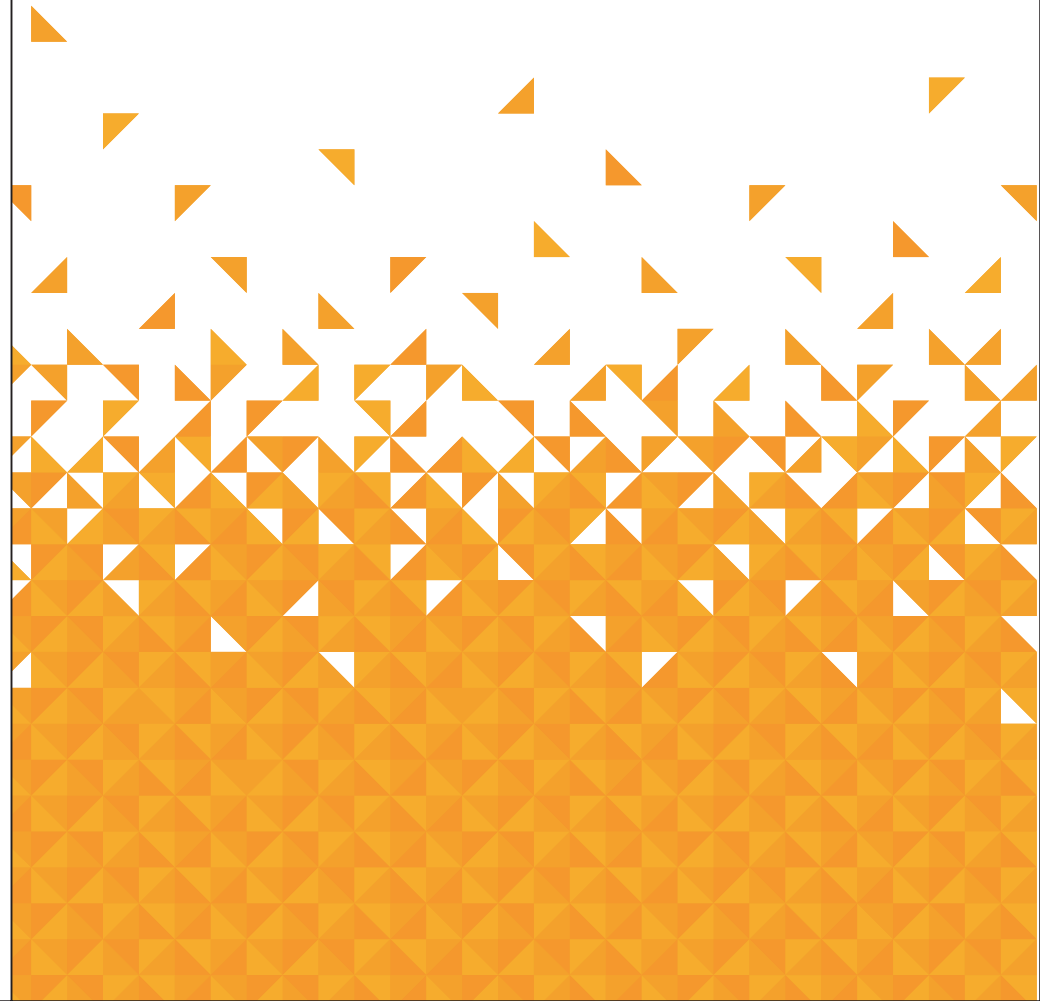
CAUTION: HOT SURFACE!

or online at www.bush-support.co.uk If you still require further assistance, call one of our experts on 01759 487838.

Safety information

BUSH

7



Care and maintenance

Looking after your appliance

Product Fiche

Brand	BUSH
Model	DHB7VTDW/DHB7VTDB
Dryer Type	Air-vented
Rated capacity	7 kg
Energy efficiency class 1	C
Energy consumption 2	504 kWh
Automatic or non-automatic	Non-automatic
EU Ecolabel	N/A
Energy consumption of the standard cotton programme at full load	4.37 kWh
Energy consumption of the standard cotton programme at partial load	2.24 kWh
Power consumption of the off-mode (Po)	0 W
Power consumption of the left-on mode (Pi)	0 W
Duration of the left-on mode	N/A
Weighted programme time of the standard cotton programme at full and partial load	155 Minutes
Programme time of the standard cotton programme at full load	161 Minutes
Programme time of the standard cotton programme at partial load	81 Minutes
Sound power level for the standard cotton programme at full load	61dB

Cotton + Standard programme, which is the "standard cotton programme"

Used at full and partial load is the standard drying programme to which the Information in the label and the fiche relates, that this programme is suitable for drying normal wet cotton laundry and that it is the most efficient programme in terms of energy consumption for cotton.

NOTE:

1 A+++ (most efficiency) to D (least efficiency)

2 Energy consumption 606 kWh-per year, based on 160 drying cycles of the standard cotton programme at full and partial load, and the consumption of the low-power modes/ Actual energy consumption per cycle will depend on how the appliance is used.

We apologise for any inconvenience caused by any minor inconsistencies in these instructions, which may occur as a result of product improvements and development.

Getting to know your Tumble Dryer

2

If you require any technical guidance or find that your product is not operating as intended, a simple solution can often be found in the **Troubleshooting** section of these instructions.

Getting to know your Tumble Dryer

You'll be up and running in no time

Ready? Let's begin...

Please read these instructions carefully. They contain important information which will help you get the best from your Tumble Dryer and ensure safe and correct installation and operation. If you require any further assistance, our technical experts are happy to help. For full details, refer to the product support section at the end of these instructions.

Care and maintenance

Looking after your appliance

Cleaning the Air Intake Shroud



Please ensure that the Air Intake Shroud is cleaned regularly to ensure the Tumble Dryer works efficiently.

The air intake shroud is easily removed by un-clipping the plastic vent casing from the tumble dryer as shown. In the casing, there is a small piece of material that gathers lint. Please clean the lint by washing with luke warm water. Please ensure this is completely dry before adding back into the casing and clipping back onto the dryer.

Technical specification

Model	DHB7VTDW/DHB7VTDB
Drying Capacity	7.0 kg
Voltage	220-240v~50Hz
Rated Input	1800W
Net Weight	27.5 kg
Dimensions	600mmx565mmx850mm
Drum speed	53rpm

We apologise for any inconvenience caused by any minor inconsistencies in these instructions, which may occur as a result of product improvements and development.

or online at www.bush-support.co.uk if you still require further assistance, call one of our experts on 01759 487838.

Care and maintenance

Looking after your appliance

General



Important: Always unplug the appliance from the power socket before cleaning or maintenance.

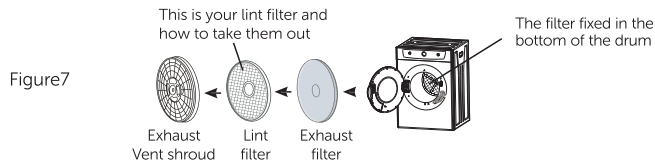
- Please ensure you unplug the appliance before carrying out any cleaning.
- Never use any sharp instruments or abrasive substance, soap, household cleaner, detergent or wax polish for cleaning.
- Never clean the appliance with flammable fluids. This could be hazardous.
- Clean the exterior of the appliance, inner tube and door seal with a damp cloth. Open the door for aeration to dry the inner tube through. Avoid water going in the control panel when cleaning, use a dry cloth only.
- Clean the lint filter after each use.

Clean the lint filter

Please unplug the power cord prior to any cleaning. The lint filter must be in place whenever drying. It must be cleaned before each use.

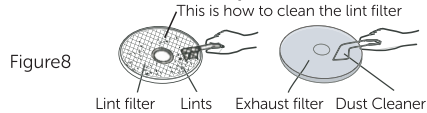
1. Removing the filters

Remove by pulling outwards with fingers, inserted into the four holes around the exhaust vent shroud. The filter is in 3 parts: Exhaust vent shroud, lint filter and exhaust filter (as shown in figure 7)



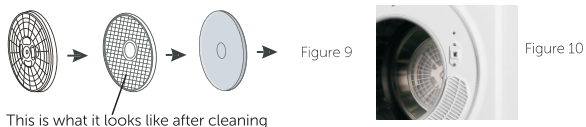
2. Cleaning the filter

Separate "exhaust vent shroud", "lint filter" and "exhaust filter". Remove the lint on the lint filter and exhaust filter with a soft brush or vacuum cleaner. Do not damage the filters (as shown in figure 8).



3. Re-installing the filter

After cleaning, assemble in the sequence of "exhaust filter- lint filter- exhaust vent shroud", align the recesses in the center with the projection in the center of the drum. Make sure that it is firmly inserted (as shown in figure 9).



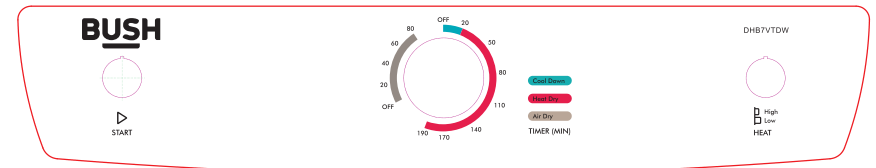
If you require any technical guidance or find that your product is not operating as intended, a simple solution can often be found in the **Troubleshooting** section of these instructions,

Components



1. Control Panel
2. Air intake shroud
3. Internal drum
4. Door
5. Lint Filter

Control Panel



Please see page 17 for all button and Function use

or online at www.bush-support.co.uk If you still require further assistance, call one of our experts on 01759 487838.

Getting to know your Tumble Dryer

You'll be up and running in no time

Accessories

- 1 x Exhaust Connector
- 1 x Metal Ring
- 1 x Venting Hose
(extended:150mm contracted:36mm)



Tools

You may use these tools to help install the parts above

- Glove
- Phillips Screwdriver



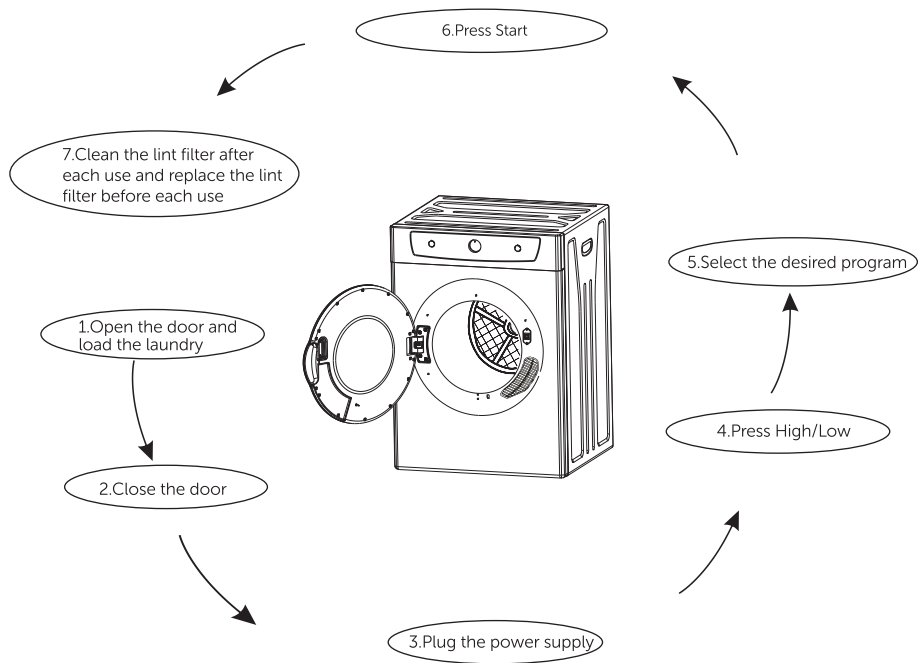
Care and maintenance 6

If you require any technical guidance or find that your product is not operating as intended, a simple solution can often be found in the **Troubleshooting** section of these instructions.

Using your Tumble Dryer

Getting the most from your appliance

Quick Start Guide



Please ensure the lint filter is cleaned after every use!

Full list of instructions how to clean the lint filter are on page 26 of this Instruction Booklet



Installing your Tumble Dryer

3

Installing your Tumble Dryer

Bringing it all together

Installation requirements

Transportation

- ⚠ Caution: 2 people are required to unpack and handle the appliance, it is recommended that gloves are worn.
- The appliance should be transported only in an upright position. Do not tilt the appliance greater than 45°. The packaging as supplied must be intact during transportation.
- Do not move the appliance by pulling the door or handle as it may damage your appliance, flooring and wall coverings etc.
- Ensure the supply cable is not caught under the appliance during and after moving.
- Carefully remove all package materials including the foam base, dispose of correctly.

Unpacking Tumble dryer

Caution: 2 people are required to unpack the tumble dryer, it is recommended that gloves are worn.

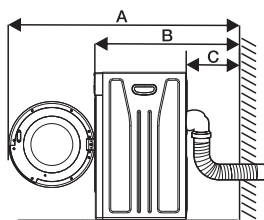


Fig1

What is the length A(door open)	1180mm
What is the length B(door closed)	720mm
What is the length C	150mm

Installation

- Ensure sufficient spacing is provided for the appliance to be installed. Leave space on back (15cm) to ensure proper ventilation. See figure 1.
- Install the tumble dryer in a well ventilated room.
- Make sure that your machine is not placed on the power cord.
- Do not place the appliance near a heat source or in direct sunlight.
- Do not put any heavy objects on top of the appliance. It will damage the appliance.
- Do not install the appliance in a moist and wet place. See figure 2.
- Adjust the feet at front to level the appliance. It should be installed on a smooth surface to avoid excessive vibration and noise.
- Never unscrew the adjustable feet from their housings.
- Refer to section "User instructions" to prepare your appliance for use.



Fig2

Load capacity



Caution : Overload is not recommended. The drying performance will be degraded when it is overloaded. The machine and your clothes may get damaged. Please refer to the program table to select the desired loading for each setting. Do not overload the machine.

- Following table can provide you the idea of the weight for different kind of clothes.

Articles / Clothes	Approx. Weight(g)
Cotton quilt covers(single/double)	900/1500
Bed sheets (single/double)	600/900
Work clothes	1120
Large tablecloths	700
Small tablecloths	350
Tea napkins	100
Bath towels	700
Hand towels	300
Blouses	150
Cotton shirts	300
Shirts	180
Cotton dressed	500
Jeans	800
Jacket	800
Handkerchiefs	100
T-shirts	150
Shorts	70
Socks	50

- Place your clothes into dryer loosely so that they have enough room during appliance operation and will not get tangled

If you require any technical guidance or find that your product is not operating as intended, a simple solution can often be found in the **Troubleshooting** section of these instructions.

or online at www.bush-support.co.uk If you still require further assistance, call one of our experts on 01759 487838.

Using your Tumble Dryer

Getting the most from your appliance

Before first use

Final checks before operating the appliance

- 1.Ensure there is good air circulation around the appliance.
- 2.The feet have been adjusted to ensure the appliance does not move.
- 3.Check the hose has been extended to the outdoors and is well vented.
- 4.Plug in the appliance.

Garments suitable for drying in tumble dryer

Before using the tumble dryer, you have to ensure the laundry is suitable to dry in the tumble dryer. Always follow the advice on the garment labels. Dry only laundry with a label stating they are suitable for drying in the dryer and select the appropriate program.



Dry



Do not dry



Do not tumble dry



Tumble dry, high heat



Tumble dry, middle heat



Dry horizontally



Hang without spinning



Dry on a hanger



Tumble dry, low heat

Garment NOT suitable for drying in tumble dryer

- Do not dry articles that have been previously cleaned in, washed in, soaked in or spotted with petrol, gasoline, dry-cleaning solvents or other flammable or explosive substances as they give off vapors that could ignite or explode.
- Do not dry the articles containing rubber, plastic or similar elastic materials such as padded bras, tennis shoes, galoshes, bath mats, rugs, bibs, baby pants, raincoats plastic bags or pillows that may melt or burn. Some rubber materials, when heated, can under certain circumstances produce fire by spontaneous combustion.
- Do not dry clothes / articles foam or rubber as they may be deformed.
- Clothes / articles containing metal, hard plastic and similar materials, such as belt buckles, jeans, bra wires, buttons and similar accessories will damage the machine and may cause damage. Do not place such items in the tumble dryer.
- Do not dry items such as wool, silk articles and nylon stockings, delicate embroidered fabrics, garments with metal accessories and items such as sleeping bags.
- Soaking wet laundry or laundry dripping with water must not be put into the tumble dryer.

Preparation for the clothes to be dried

- Thoroughly spin the laundry in washing machine. High spin speed can reduce the drying time and save energy consumption.
- Separate your laundry before placing them into the tumble dryer.
- Sort the laundry according to their types thickness. Put the same type of laundry together.

If you require any technical guidance or find that your product is not operating as intended, a simple solution can often be found in the **Troubleshooting** section of these instructions.

Installing your Tumble Dryer

Bringing it all together

Levelling feet

- 1:For your machine to work efficiently with minimum vibration it should be settled on flat, nonslippery,firm ground.
- 2:You can adjust the balance of your machine by changing the positioning of its feet.
- 3:First,loosen the plastic adjustment nut (see figure 1)
- 4:Adjust by rotating the feet upwards or downwards.(Figure 3)
- 5:After the desired position has been reached tighten the plastic adjustment nut again by rotating it upwards.

Note:Never put cartons,wooden blocks or similar materials under the machine to balance irregularities in the level of the ground.

Connections

Hose connection

- ⚠ **Warning:** 2 people may be required to install the hose. It is recommended to wear the gloves

NOTE: Ventilation hose assures exhausting of the air from the inside of the tumble dryer.

- Before installation, ensure that the unit is off and unplugged from the mains.

- 1.Connect hose (figure 4) to the air outlet of the machine by screwing it tight in a clockwise direction.
 - 2.Extended the hose to the suitable length.
 - 3.Route the hose to the outdoors via a window or it can be connected to an outlet in the wall (see the diagram figure 6).
- The air outlet hose must be extended directly to the outdoors. Keep bends to a minimum to ensure adequate ventilation.

- To prevent water accumulation in the hose, make sure the hose is not creased.
- In winter, the room temperature may be cold. The water may condense inside the hose. Periodical checks are required to avoid hose damaged by the water.

- ⚠ **Warning:** Do not connect the hose to the chimney of a stove or fireplace.

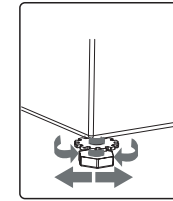


Figure 3

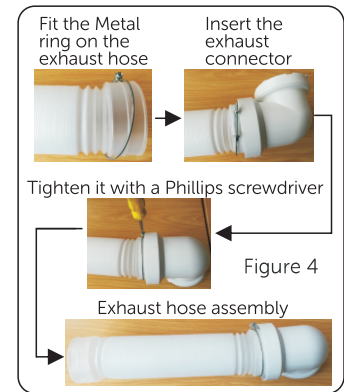


Figure 4

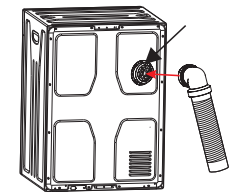


Figure 5

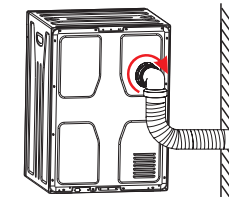


Figure 6

or online at www.bush-support.co.uk If you still require further assistance, call one of our experts on 01759 487838.

Installing your Tumble Dryer

Bringing it all together

Electrical connection



Any electrical work that is required to install this appliance **MUST** be carried out by a qualified electrician.



Warning: THIS APPLIANCE MUST BE EARTHED

Before making any electrical connections, ensure that:

- Electrical safety is only guaranteed when the earth system of your house in accordance with the related local regulations.
- Do not bend, stretch or pull the supply cable to avoid electric shock.
- Ensure the power socket is suitable for the Maximum power of the machine (fuses in the power circuit must be 13 amp).
- The supply voltage should be the same as that indicated in the technical specifications and the appliance rating plate.
- The appliance should be earthed and in compliance with the applicable law.
- When installed, the power socket must be within easy reach.
- If the socket outlets in your home are not suitable for the plug supplied with this unit check with a qualified electrician for replacement.
- To avoid the risk of overloading your plug socket, the use of adapters, multiple connectors or extension cables are not recommended. The appliance must be connected to a 220-240 volt 50Hz AC supply by mean of a three pin socket, suitably earthed and protected by a 13 amp fuse.
- Should the fuse need to be replaced, a 13 amp fuse approved to BS1362/A must be used. The plug contains a removable fuse cover that must be refitted when the fuse is replaced. If the fuse cover is lost or damaged, the plug must not be used until a replacement cover has been fitted or the plug is replaced.
- A damaged plug should be cut off as close to the plug body as possible, the fuse should be removed and the plug disposed of safely.

Plug replacement (UK & Ireland only)

Should you need to replace the plug, the wires in the power cable are coloured in the following way:

Blue - Neutral 'N'

Brown - Live 'L'

Green & Yellow - Earth 'E'

The green & yellow wire must be connected to the terminal in the plug that is marked with the letter E or by the earth symbol.

The blue wire must be connected to the terminal that is marked with the letter N.

The Brown wire must be connected to the terminal that is marked with the letter L.

If power supply cord is damaged, it must be replaced by the manufacturer or its service agent or a similar qualified person in order to avoid a hazard.

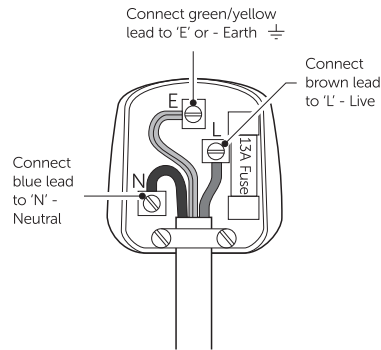


Figure. 7

Using your Tumble Dryer

5

If you require any technical guidance or find that your product is not operating as intended, a simple solution can often be found in the **Troubleshooting** section of these instructions.

Functions

Simple everyday use

Ending the program – Cancelled by customer

To cancel the program:

1. Open the door, the machine will stop immediately and wait for five minutes to let the temperature inside cool down.
2. Remove the clothes



Warning: The temperature inside the dry drum may still be high. Take extra care when removing the clothes.

- Clean the drum and lint filter after each drying.

Overheat Safety device

This machine is equipped with an overheat safety device that switches off the machine in the event of overheating. Should the machine stop heating, turn the machine off and inspect lint filter or exhaust outlet or ventilation of the laundry room. Blockage on the filter & exhaust outlets (hose) and poor ventilation in laundry room will cause the overheating on the machine. Clean the blockage on filter & exhaust outlet and open the window in the laundry room to improve the situation. Wait for at least 20 minutes for the machine to cool down.

Drying Capacity	Dry time	
	High	Low
Approx. 2kg	Approx. 50min	Approx. 90min
Approx. 3.5kg	Approx. 110min	Approx. 150min
Approx. 5kg	Approx. 150min	Approx. 190min
Approx. 7kg	Approx. 190min	—

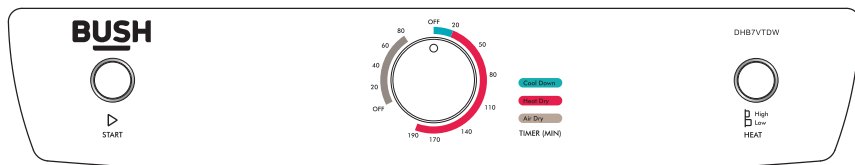
- All values given in the table have been fixed according to the EN61121:2013 Standard. These values may deviate from the table according to the laundry type, laundry spin speed, environment condition and voltage fluctuation.

If you require any technical guidance or find that your product is not operating as intended, a simple solution can often be found in the **Troubleshooting** section of these instructions.

Functions 4

Functions

Simple everyday use



Instructions (Cont.)

Start button

After having set up the Heat Selector and Timer Dial, press the Start button. The dryer will start and work until the program is finished. If during this process the door is opened or the power is switched off, the dryer will stop working. In order to start the dryer again after the door is closed or the power is switched back on, you will need to push the Start button, then the dryer will start working again.

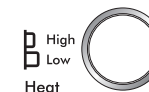


NOTE: This Start button is only designed to start the dryer working. If you press this button during the drying process, the dryer will not pause. In order to stop the dryer, you must turn the timer dial to OFF position.

Functions

Heat Selector button

Select 'High Dry' for items that are particularly bulky or large quantities. Select 'Low Dry' for delicate items such as silk, nylon, linen etc.



Drying Program Selector

There are five drying combinations available: Cool, Anti-wrinkle, Warm, Hot and Air dry.

Air Dry: This function runs with cool air, primarily to air items that require freshening. i.e.: clothes that have been stored for a long period of time.

OFF: When the 'Drying Timer' dial is in the 'OFF' position no power is supplied to the unit. As soon as the dial is turned clockwise to the desired program, the dryer will start.

Cool: This function is generally used to cool the items that have just been dried. This helps to prevent creasing. Instead of the motor pushing heat into the drum of the dryer it will generate cool air.

OFF: When the 'Drying Timer' dial is in the 'OFF' position no power is supplied to the unit. As soon as the dial is turned clockwise to the desired program, the dryer will start.

Anti-wrinkle: This is used for items that are difficult to iron i.e.: cotton shirts and linen. Using the heat selector knob, choose 'Low'. Set the drying timer knob between 30-60 minutes depending on the amount of items in the dryer. Once the timer stops (including the cool program) the items will still contain moisture, making the ironing process easier.

Hot: For drying large quantities or bulky items (More than 0.5 times the rated capacity). Select the 'High' heat option and set the timer for more than 120 minutes.

Warm: This function will dry and cool items and in most cases leave items wrinkle free (depending on material). Select the 'High' heat option and set the timer for more than 60-120 minutes.