



motorola



USER'S GUIDE

Dashboard Camera

Model: MDC50

The features described in this user's guide are subject to modifications without prior notice.

Welcome...

to your new Motorola Dashboard Camera!

Thank you for purchasing the Dashboard Camera. Please keep your original dated sales receipt for your records. For warranty service of your Motorola product, you will need to provide a copy of your dated sales receipt to confirm warranty status. Registration is not required for warranty coverage.

For product related questions, please call:

+44 (0) 844 557 0890 (UK only)*

**Calls cost 7p per minute plus your telephone company's access charge*

Mon - Fri 8:00am to 8:00pm

Sat 8:30am to 2:00pm

+44 (0) 8187 62092 (ROI)

On the Web: www.motorolastore.com/support

Email: support@motorolastore.com

This User's Guide has all the information you need to make the most out of your product.

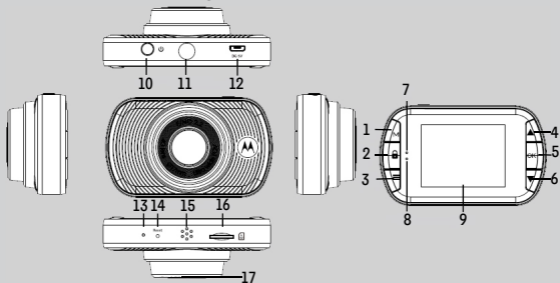
Please read the Safety Instructions on page 5 before you install the unit.

Before you use the Dashboard Camera, we recommend you insert a SD card into the SD card slot.

Got everything?

- Dashboard Camera
- Windshield Mount
- Car Adapter
- User Manual

Overview of your Dashboard Camera



1. Mode Button

Video/ Playback mode switcher

2. Lock Button

Press while recording to protect the current file in the event of an emergency situation.

3. Menu/Back Button

Press to open the menu in current mode, press twice to leave.

4. Up Button

Press to navigate up within menus and to move to the previous file when in playback mode.

5. OK Button

Enter; Short press when in Video mode: Start/Stop video recording

6. Down Button

Press to navigate down within menus and to move to the next file when in playback mode. Short press when recording: Mute/Unmute.

7. Charge Indicator

Red: charging, Green: fully charged.

8. Status Light

Blue: Power On; Blue flashing: Recording.

9. Screen

2.0" LCD colour screen.

10. Power On/Off Button

Press and hold for 3 seconds to turn MDC50 On / Off.

11. Mounting Nut

Screw up the supplied Windshield Mount here.

12. DC-IN & USB Socket

Connect the Car Adapter or USB data cable here.

13. Microphone

Integrated microphone for audio recording.

14. Reset Button

In the unlikely event MDC50 becomes unresponsive, press the Reset Button to restart MDC50.

15. Speaker

Integrated speaker for audio playback directly from MDC50.

16. Micro SD Card Slot

Insert the MicroSD card here, taking care that the gold contacts are facing towards the back of MDC50.

17. Camera Lens

Wide Angle 140°, 4 glass lens

Table of contents

| | |
|--|-----------|
| 1. Safety Instructions | 5 |
| 2. Getting Started | 6 |
| 2.1 Installing your Device | 6 |
| 2.2 First Use | 7 |
| 3. Using your Dashboard Camera | 8 |
| 3.1 Recording and Saving | 8 |
| 3.2 Switching Modes | 9 |
| 3.2.1 Mass Storage Mode | 9 |
| 3.2.2 Video Mode | 9 |
| 3.2.3 Playback Mode | 12 |
| 3.3 Parking Mode | 13 |
| 3.4 Lock/Unlock the Video | 13 |
| 4. Settings | 14 |
| 4.1 Settings | 14 |
| 4.2 Playback Settings | 17 |
| 5. Disposal of the Device (Environment) | 18 |
| 6. General Information | 19 |
| 7. Technical Specifications | 27 |



1. *Safety Instructions*

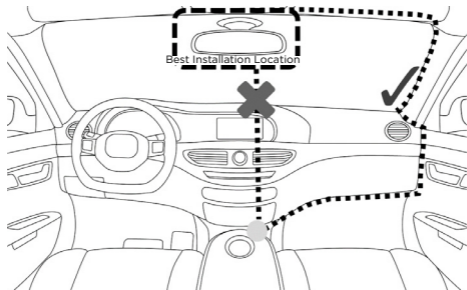


WARNING

- Do not install the device within the driver's or passenger airbag operation range. Please refer to your car's service manual for details about the operation range of your car's airbags.
- Never modify modes, settings, or program your device while your car is in motion.
- Ensure the device and its power cord are installed as per the instructions on page 6, and do not obstruct the driver's line of sight or impede the operation of any driving controls

2. Getting Started

2.1 Installing your Device



The above illustration refers to a left-hand drive car. For right-hand drive cars, please flip the position of the cable installation accordingly.

- Install your device within the rear-view mirror area and within the wiper cleaning area to get the clearest possible view.
- Your device comes with a 3.6m USB power cable. Organise the power cord so that it does not interfere with the driver's vision. Use cable clips to secure the power cord if necessary.
- Place the device on the windshield mount first. Press the suction cup of the mount to the windshield and press the lever to lock. Ensure the mount is safely attached to the windshield.



- When using the dashboard camera device in your car, we recommend that you always use the cigarette charger in order to maintain the battery level. The unit is not designed to run on battery power alone, the battery is there for backup purposes only.

2.2 First Use

- Insert a SD card (not provided) in the SD card slot. Your dashboard camera accepts SD cards of up to 32GB capacity (class 10). It is recommended that you format the SD card. Please refer to the settings described in this manual.
- Your dashboard camera will always power up and begin recording automatically as soon as it is connected to a power source. Simply connect your dashboard camera to a power source that comes on when you start the engine of your vehicle, and the dashboard camera will start recording automatically without you having to remember to press on a button.
- You can also power it ON or OFF manually by pressing the **On / Off** button.
- Whenever the device is turned ON or OFF, you will see a splash screen showing the Motorola logo.



3. Using your Dashboard Camera

3.1 Recording and Saving

The purpose of your dashboard camera is to continuously record the road ahead, and to automatically record and save any incidents or accidents you might be involved in. The status LED (Blue) will flash when it is recording.

Your device records video by clusters of 1 minute. It is equipped with a sensor that detects shocks. Each time a shock is detected, it will permanently save the cluster during which the event occurred. The sensitivity of the sensor can be changed in the settings menu, see section **4.1 Settings**.

Once your SD card is full, it will automatically overwrite the oldest footage.



3.2 Switching Modes

You can switch between the **Video** and **Playback** mode by pressing the **Mode** button. **Video mode** is the default mode. To view or delete saved footages, switch to **Playback mode**.

IMPORTANT!

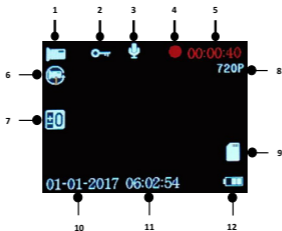
The driver must never switch modes while the car is in motion.


3.2.1 Mass Storage Mode

You can also connect the device (Power off state) to your computer using the standard micro USB cable to view and manage videos stored inside the SD card.

3.2.2 Video Mode

The table below explains the various information displayed on the screen when your MDC50 is in **Video mode**. Some icons will only be displayed once the relevant function is selected within the Video menu, as described below.



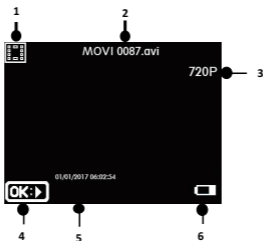
| | |
|--------------------------|--|
| 1. Mode | Indicates the dashboard camera is in Video mode. |
| 2. Protected | Appears on screen when a video file has been protected by activation of the G Sensor or by the pressing of the file protect button. |
| 3. Microphone | Appears on screen when Audio Recording is active.  is displayed when the microphone muted. |
| 4. Recording | Appears on screen when recording is in progress. |
| 5. Recording Time | Displays the recording time of the current video. |
| 6. Video Length | Displays the length of the individual recordings in minutes. |
| 7. Exposure | Displays the current Exposure level setting. |



| | |
|-----------------------|--|
| 8. Resolution | Displays the current resolution. |
| 9. Memory Card | Indicates whether a memory card is present. |
| 10. Date | Current date |
| 11. Time | Current time |
| 12. Battery | Indicates whether MDC50 is running on battery or external power. |

3.2.3 Playback Mode

While in video recording mode, press the **OK** button to stop video recording, then press the **MODE** button to switch to **Playback** mode. MDC50 will display the last recorded file. Depending on the type of file, the on-screen information and playback functions differ.



| | |
|---------------------|--|
| 1. Mode | Indicates the dashboard camera is in Playback mode. |
| 2. Video Number | Displays the current video number. |
| 3. Resolution | Displays the current resolution. |
| 4. Playback control | Press the OK button to start playback. |
| 5. Date/Time | Displays the Date/Time that the current file was recorded. |
| 6. Battery | Indicates whether MDC50 is running on battery or external power. |



3.3 Parking Mode

Your dashboard camera can record footages of events occurring when your car is parked with its engine off. The built-in battery will keep the sensor of your device in stand-by mode, and will start recording automatically for 30 seconds if it detects vibration or a shock. Parking mode can only record and save footage after an event has been detected by the sensor.

IMPORTANT!

*Due to technical reasons, **Parking mode** is disabled by default. You can enable it in settings menu, see section 4.1 Settings.*

3.4 Lock/Unlock the Video

In case of emergency, you can lock/unlock the current video by pressing on the **Lock** button when recording. The locked video footages will be saved in the memory card until you remove them.

4. Settings

4.1 Settings



While in video recording mode, press the **OK** button to stop video recording, then press the **Menu/Back** button to enter **Settings**.

For each sub-menu, press **Up** or **Down** to navigate, **OK** to confirm, and **Menu/Back** to go back or cancel.

| Menu | Description |
|------------|---|
| Language | English /繁体中文 /简体中文 / Japanese /France /Deutsch /Korean /Italiano /Portugues /Pyccknn / Spanish |
| Date/Time | Set the date and time. Press Up or Down to set each value; press OK to switch to the next value. |
| Beep Sound | Enable or disable key sounds. |
| Frequency | Select exposure, used to adjust exposure level for different lighting conditions. Set by default to 50Hz; you can set it to 60Hz if you reside in the USA. |



| | |
|------------------------|--|
| LCD Off | You can set the LCD to never turn off or turn off after 3 minutes |
| G-Sensor | <p>G Sensor detects forces which will automatically protect the current recording in the event of a collision.</p> <p>You can change the sensitivity of the sensor. It is set to Low by default, but can be set to Off/High/Medium/Low.</p> <p>If you turn the sensor off, your dashboard camera will not be able to permanently save any footage.</p> |
| Park Mode | Enable or disable parking mode. |
| Format | <p>Use this option to format your SD Card.</p> <p><i>IMPORTANT! Formatting a SD card will erase all its memory contents.</i></p> |
| Default Setting | Reset all your device settings to factory default. |
| Version | Current firmware version. |

| Resolution | Card Capacity | Recording time (minutes) |
|---------------|---------------|--------------------------|
| 720P 1280*720 | 4GB | 22 |
| | 8GB | 45 |
| | 16GB | 90 |
| | 32GB | 180 |

IMPORTANT!

*The above information is for your reference only.
Different memory cards have slightly different total capacity and the maximum recording time is different.*



4.2 Playback Settings



To access **Playback Settings**, press the **Mode** button while in **Playback** mode. For each sub-menu, press **Up** or **Down** to navigate, **OK** to confirm, and **Menu/Back** to go back or cancel.

| Menu | Description |
|---------|--|
| Delete | <p>Use this option to delete videos stored in your SD card. You can choose between deleting the current file you are currently watching or all files on your SD card.</p> <p><i>IMPORTANT! You cannot recover a video that has been previously deleted.</i></p> |
| Protect | <p>Use this option to lock videos stored in your SD card so they cannot be deleted. Use the same option to unlock previously locked videos. You can choose between Lock Current, Unlock Current, Lock All or Unlock All.</p> |

5. Disposal of the Device (Environment)

At the end of the product life cycle, you should not dispose of this product with normal household waste. Take this product to a collection point for the recycling of electrical and electronic equipment. The symbol on the product, user's guide and/or box indicates this.



Some of the product materials can be re-used if you take them to a recycling point. By reusing some parts or raw materials from used products you make an important contribution to the protection of the environment.

Please contact your local authorities in case you need more information on the collection points in your area.

Dispose of the battery pack in an environmentally-friendly manner according to your local regulations.

6. General Information

If your product is not working properly....

1. Read this User's Guide.
2. Visit our website: www.motorolastore.com/support
3. Contact Customer Service at

+44 (0) 844 557 0890 (UK only)*

**Calls cost 7p per minute plus your telephone company's access charge*

Mon - Fri 8:00am to 8:00pm

Sat 8:30am to 2:00pm

+44 (0) 8187 62092 (ROI)

Email: support@motorolastore.com

Consumer Products and Accessories Limited Warranty ("Warranty")

Thank you for purchasing this Motorola branded product manufactured under license by Binatone Electronics International Ltd ("BINATONE").

What Does this Warranty Cover?

Subject to the exclusions contained below, BINATONE warrants that this Motorola branded product ("Product") or certified accessory ("Accessory") sold for use with this product is manufactured to be free from defects in materials and workmanship under normal consumer usage for the period outlined below. This Warranty is your exclusive warranty and is not transferable.

THIS WARRANTY GIVES YOU SPECIFIC LEGAL RIGHTS, AND YOU MAY HAVE OTHER RIGHTS THAT VARY BY STATE, PROVINCE OR COUNTRY. FOR CONSUMERS WHO ARE COVERED BY CONSUMER PROTECTION LAWS OR REGULATIONS IN THEIR COUNTRY OF PURCHASE OR, IF



DIFFERENT, THEIR COUNTRY OF RESIDENCE, THE BENEFITS CONFERRED BY THIS LIMITED WARRANTY ARE IN ADDITION TO ALL RIGHTS AND REMEDIES CONVEYED BY SUCH CONSUMER PROTECTION LAWS AND REGULATIONS. FOR A FULL UNDERSTANDING OF YOUR RIGHTS YOU SHOULD CONSULT THE LAWS OF YOUR COUNTRY, PROVINCE OR STATE.

Who is covered?

This Warranty extends only to the first consumer purchaser, and is not transferable.

What will BINATONE do?

BINATONE or its authorised distributor at its option and within a commercially reasonable time, will at no charge repair or replace any Products or Accessories that does not conform to this Warranty. We may use functionally equivalent reconditioned/ refurbished/ pre-owned or new Products, Accessories or parts.

What Other Limitations Are There?

ANY IMPLIED WARRANTIES, INCLUDING WITHOUT LIMITATION THE IMPLIED WARRANTIES OF MERCHANTABILITY AND FITNESS FOR A PARTICULAR PURPOSE, SHALL BE LIMITED TO THE DURATION OF THIS LIMITED WARRANTY, OTHERWISE THE REPAIR OR REPLACEMENT PROVIDED UNDER THIS EXPRESS LIMITED WARRANTY IS THE EXCLUSIVE REMEDY OF THE CONSUMER, AND IS PROVIDED IN LIEU OF ALL OTHER WARRANTIES, EXPRESS OR IMPLIED. IN NO EVENT SHALL MOTOROLA OR BINATONE BE LIABLE, WHETHER IN CONTRACT OR TORT (INCLUDING NEGLIGENCE) FOR DAMAGES IN EXCESS OF THE PURCHASE PRICE OF THE PRODUCT OR ACCESSORY, OR FOR ANY INDIRECT, INCIDENTAL, SPECIAL OR CONSEQUENTIAL DAMAGES OF ANY KIND, OR LOSS OF REVENUE OR PROFITS, LOSS OF BUSINESS, LOSS OF INFORMATION OR OTHER

FINANCIAL LOSS ARISING OUT OF OR IN CONNECTION WITH THE ABILITY OR INABILITY TO USE THE PRODUCTS OR ACCESSORIES TO THE FULL EXTENT THESE DAMAGES MAY BE DISCLAIMED BY LAW.

Some jurisdictions do not allow the limitation or exclusion of incidental or consequential damages, or limitation on the length of an implied warranty, so the above limitations or exclusions may not apply to you. This Warranty gives you specific legal rights, and you may also have other rights that vary from one jurisdiction to another.

| Products Covered | Length of Coverage |
|---|--|
| Consumer Products | One (1) year from the date of the Products, original purchase by the first consumer purchaser of the product. |
| Consumer Accessories | Ninety (90) days from the date of the Accessories, original purchase by the first consumer purchaser of the product. |
| Consumer Products and Accessories that are Repaired or Replaced | The balance of the original warranty or for Ninety (90) days from the date returned to the consumer, whichever is longer. |

Exclusions

Normal Wear and Tear. Periodic maintenance, repair and replacement of parts due to normal wear and tear are excluded from coverage.

Batteries. Only batteries whose fully charged capacity falls below 80% of their rated capacity and batteries



that leak are covered by this Warranty.

Abuse & Misuse. Defects or damage that result from: (a) improper operation, storage, misuse or abuse, accident or neglect, such as physical damage (cracks, scratches, etc.) to the surface of the product resulting from misuse; (b) contact with liquid, water, rain, extreme humidity or heavy perspiration, sand, dirt or the like, extreme heat, or food; (c) use of the Products or Accessories for commercial purposes or subjecting the Product or Accessory to abnormal usage or conditions; or (d) other acts which are not the fault of MOTOROLA or BINATONE, are excluded from coverage.

Use of Non-Motorola branded Products and Accessories. Defects or damage that result from the use of Non-Motorola branded or certified Products or Accessories or other peripheral equipment are excluded from coverage.

Unauthorised Service or Modification. Defects or damages resulting from service, testing, adjustment, installation, maintenance, alteration, or modification in any way by someone other than MOTOROLA, BINATONE or its authorised service centres, are excluded from coverage.

Altered Products. Products or Accessories with (a) serial numbers or date tags that have been removed, altered or obliterated; (b) broken seals or that show evidence of tampering; (c) mismatched board serial numbers; or (d) nonconforming or non-Motorola branded housings, or parts, are excluded from coverage.

Communication Services. Defects, damages, or the failure of Products or Accessories due to any communication service or signal you may subscribe to or use with the Products or Accessories is excluded

from coverage.

How to Obtain Warranty Service or Other Information?

To obtain service or information, please call:

+44 (0) 844 557 0890 (UK only)*

**Calls cost 7p per minute plus your telephone company's access charge*

Mon - Fri 8:00am to 8:00pm

Sat 8:30am to 2:00pm

+44 (0) 8187 62092 (ROI)

Email: support@motorolastore.com

You will receive instructions on how to ship the Products or Accessories at your expense and risk, to a BINATONE Authorised Repair Centre.

To obtain service, you must include: (a) the Product or Accessory; (b) the original proof of purchase (receipt) which includes the date, place and seller of the Product; (c) if a warranty card was included in your box, a completed warranty card showing the serial number of the Product; (d) a written description of the problem; and, most importantly; (e) your address and telephone number.

These terms and conditions constitute the complete warranty agreement between you and BINATONE regarding the Products or Accessories purchased by you, and supersede any prior agreement or representations, including representations made in any literature publications or promotional materials issued by BINATONE or representations made by any agent employee or staff of BINATONE, that may have been made in connection with the said purchase.



BINATONE TELECOM PLC
1 Apsley Way London NW2 7HF, United Kingdom.
Tel: +44(0) 20 8955 2700 Fax: +44(0) 20 8344 8877
e-mail: binatoneuk@binatone telecom.co.uk



EC Declaration of Conformity

We the manufacturer / Importer : Binatone Telecom Plc
1 Apsley Way London
NW2 7HF, United Kingdom.

Declare under our sole responsibility that the following product

Type of equipment: Dash Camera
Model Name: MDC 50 series

Country of Origin: China
Brand: Motorola

Complies with the essential protection requirements of New EMC Directive 2014/30/EU and the following standards:

EMC: EN55032 (2015)
EN55024 (2010/AC:2015)

The product is labelled with the European Approval Marking CE as show. Any Unauthorized modification of the product voids this Declaration.



Manufacturer / Importer
(signature of authorized person)



Henry Leung, Product Manager

London,

Signature:

Place & Date: 4 July, 2017

7. Technical Specifications

| | |
|---|------------------------------|
| LCD screen | 2.0-inch |
| Video resolution | 720P |
| Lens | 140° wide angle |
| Video format | MOV |
| Micro SD card | Up to 32G capacity, Class 10 |
| LED lights | Supported |
| Mic and Speaker | Built-in |
| Power | 5V DC |
| Battery | Li-polymer battery |
| Device dimensions | 81.6x51x31mm |
| Device weight | 59g |
| Mount dimensions | 55x55x50mm |
| Supported operating system for file viewing | Windows XP and later, MAC OS |



motorola

Manufactured, distributed or sold by Binatone Electronics International LTD., official licensee for this product.

MOTOROLA and the Stylised M Logo, are trademarks or registered trademarks of Motorola Trademark Holdings, LLC. and are used under license. All other trademarks are the property of their respective owners. © 2017 Motorola Mobility LLC. All rights reserved.



UK_EN Version 1.0

Printed in China