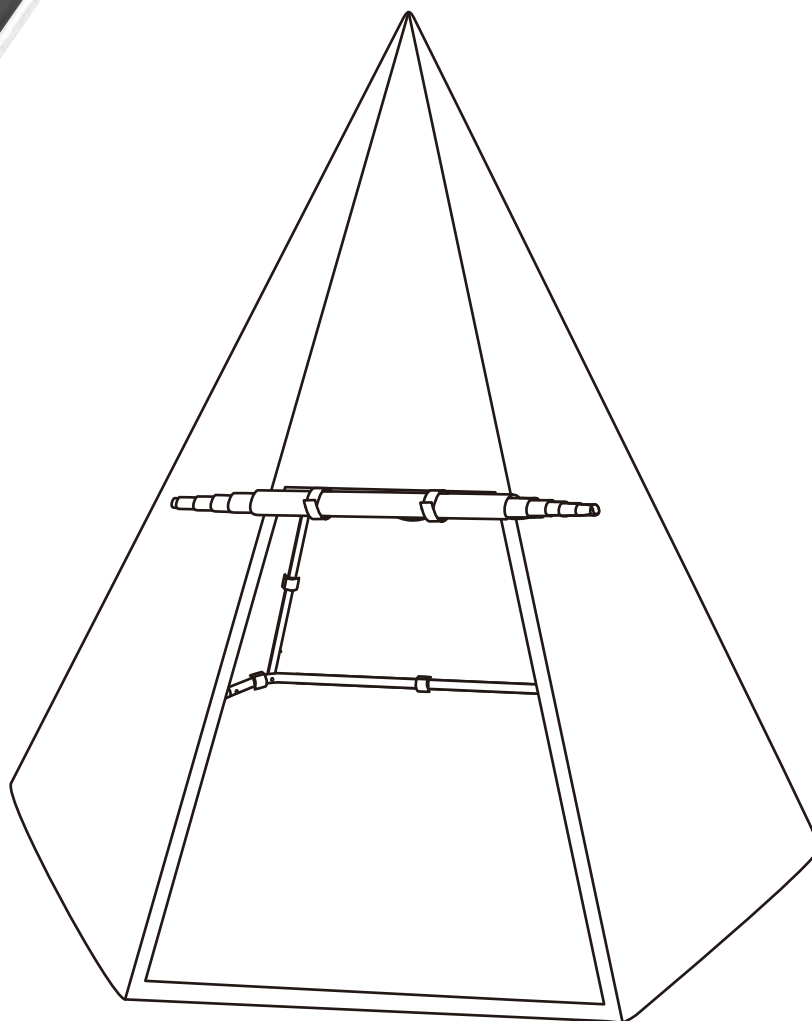


# CV Large Wigwam Playhouse

Assembly & User Instructions - Please keep for future reference

759/2085



## Important

**Age Limit: 3 - 8 years**  
**Maximum user weight: 45kg**

**Tip: It will take 2 adults around 30 minutes to assemble.**

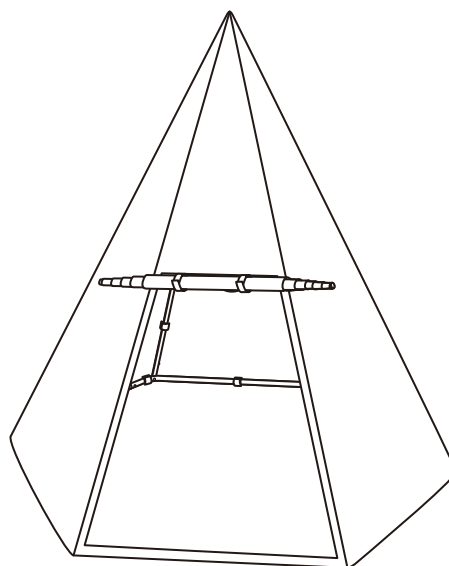
**Important** - Please read these instructions fully before assembly or use.

These instructions contain important information which will help you get the best from your product and ensure safe and correct assembly, use and maintenance.

If you need help or have damaged or missing parts, call the **Customer Helpline: (+44) 0330 0904 420**

# Contents

Warnings	2
Parts	3
Assembly Instructions	4-9
Care and Maintenance	10





# Warnings

**Important** –Please read these instructions fully before assembly or use.



## WARNING

- **WARNING!** Not suitable for children under the age of 36 months because of small part(s) and long cord(s) – choking and entanglement/ strangulation hazards.
- This item is not for user weighing more than 45kg.
- This product is intended for use by children age 3-8 years.
- For domestic outdoor use only.
- Adult assembly required.
- Children must not use the product until it is properly assembled and anchored. Adult supervision is required during the use of this equipment at all times.
- DO NOT allow children to climb or jump on this product.
- Packaging materials are not toys. Please remove all packaging and packing tags / wires before giving this toy to your child.
- Do not make changes to the original toy or use the product other than intended by the original manufacture.
- Once assembly is complete, carefully check the equipment before use. If you find any problems, do not allow children to use until it is fit for use.
- Please retain these instructions for future reference.

### LOCATION OF PLAY SET

- The equipment must be placed more than 1.8 meter from any structures or obstructions, including but not limited to buildings, fence, garage, trees, laundry lines, electrical wires. Children can be seriously injured running or swinging into obstacles.
- The product must be placed on level ground. Remove any tripping hazards from the safe play area, such as roots, tree stumps, rocks, landscaping, sprinkler heads, railroad ties, plumbing and electrical connections. Uneven ground must be leveled prior to installation. Installation on sloping or uneven ground will put stress on the joints, causing the unit to become loose and unstable which may result in serious injuries.
- Do not install your play set over hard surface, e.g. asphalt, concrete, packed earth, tile or brick floor. Recommended ground covers include double shredded bark mulch, uniform wood chips, fine gravel, fine sand.
- Place the equipment out of direct sunlight to reduce the likelihood of burns. A slide that faces north will receive the least direct sunlight.

### WEATHER CONDITIONS

- DO NOT use this equipment if the canopy or other parts are wet. Use the product only when the parts are clean and dry. If the equipment is wet, the user could slip and suffer injuries.
- Please be aware of weather conditions when using the equipment. If it is too windy, users could lose control and suffer injuries. The playground equipment must be properly anchored, stored away or restricted from use during inclement weather such as heavy winds or severe weather storms.

### PLAY SUPERVISION

- ALWAYS dress children appropriately for safe play, e.g. wear well-fitted rubber sole shoes, and remove loose or sharp items such as jewelry, hair accessories, scarves, etc which may become entangled in the equipment or cause injuries.
- DO NOT allow children to climb on structural parts (e.g. legs, top bar). These are structural components and are not designed for play.
- ALWAYS prevent access and secure from any unauthorised use when there is no adult supervision.
- DO NOT allow pets or other animals near the equipment to prevent damage or injuries.

### DISPOSAL INSTRUCTIONS

- Fully disassemble the product before disposal. Do not leave partially disassembled equipment parts in areas accessible by children.
- Should you wish to recycle the steel tubing, please take the frame to your recycling center.
- All plastic parts could be recycled. Take it to your local recycling center. Do not let children play with any disassembled parts destined for disposal, such as tubing, bolts, nuts, screws, etc.

# Parts

If you have damaged or missing parts,  
call the **Customer Helpline: (+44) 0330 0904 420**

Please Check you have all the parts fittings listed below



1 "L" Tube x6pc



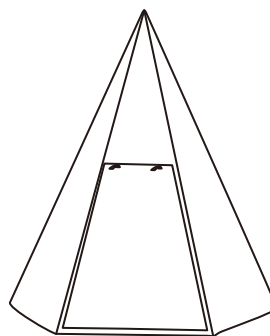
2 Plastic Cap x1pc



3 Upper Tube x6pcs



4 Lower Tube x6pcs


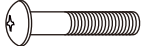




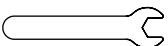


5 Canopy x1pc



6 Anchor x6pcs

**Note:** The quantities below are the correct amount to complete the assembly. In some cases more fittings may be supplied than are required.

<p>A</p>  <p>x6(M4x13mm)</p>	<p>B</p>  <p>x6(M5x20mm)</p>	<p>C</p>  <p>x12(Ø5.5x15mm)</p>	<p>D</p>  <p>x6(Ø6.5x10mm)</p>
<p>E</p>  <p>x6(M5)</p>	<p>F</p>  <p>x1(6mm)</p>	<p>G</p>  <p>x1(10mm)</p>	

**Ruler - Use this ruler to help correctly identify the bolts/screws**



# Assembly Instructions

## Step 1

Connect 1 together as shown.

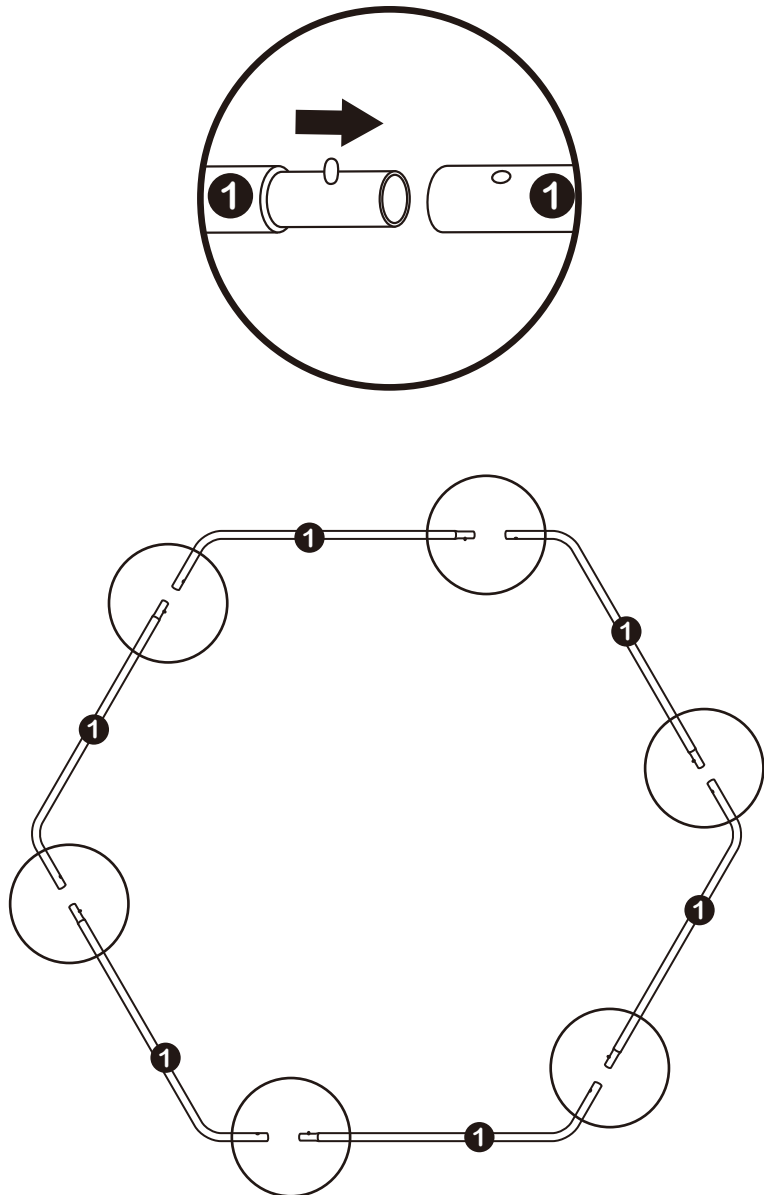


Figure 1

# Assembly Instructions

## Step 2

Insert 3 into the sockets of 4 and make sure the retractable button on 3 is secured into the hole on 4, then secure it to 2 using A and E as shown.

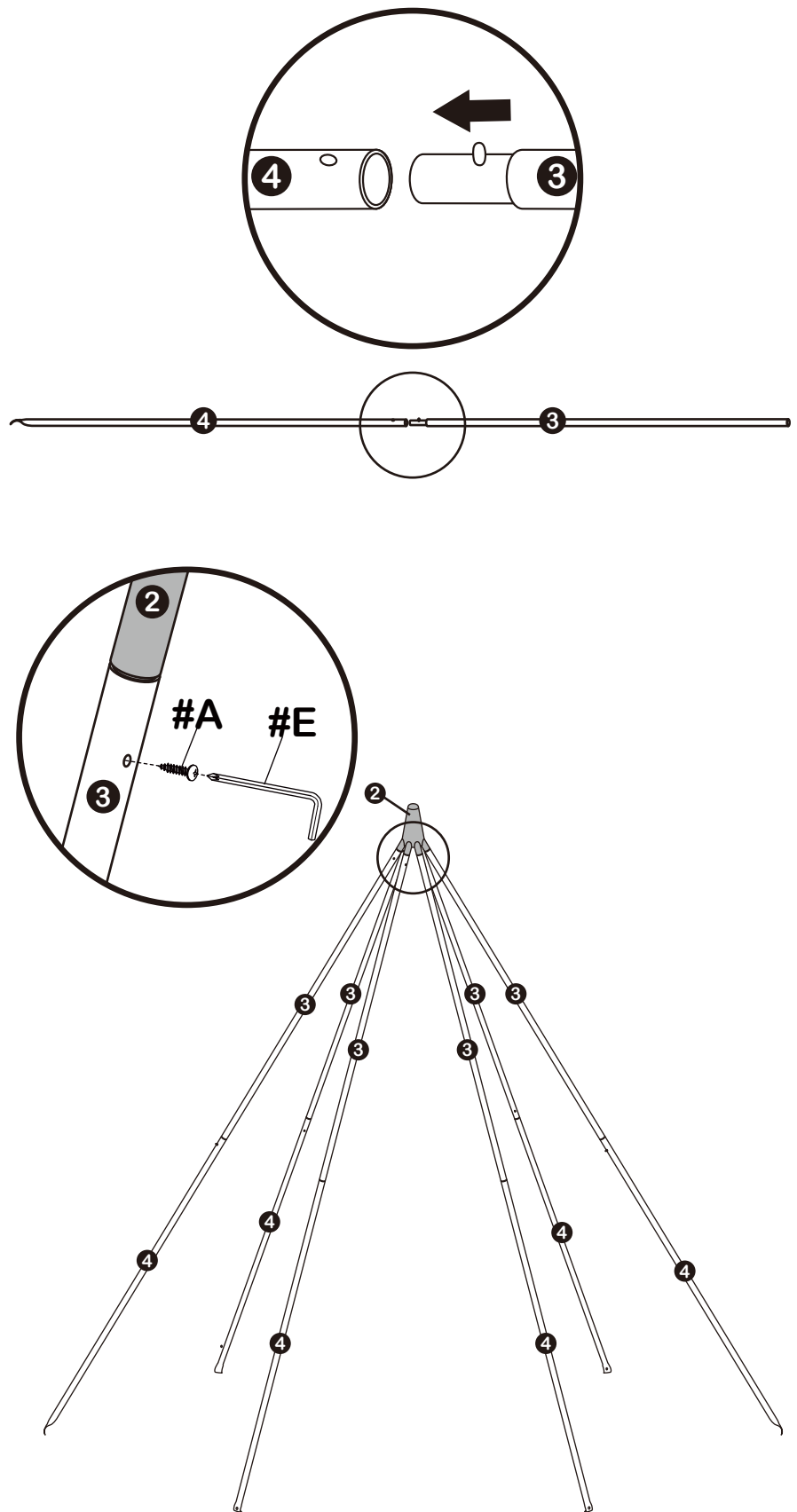


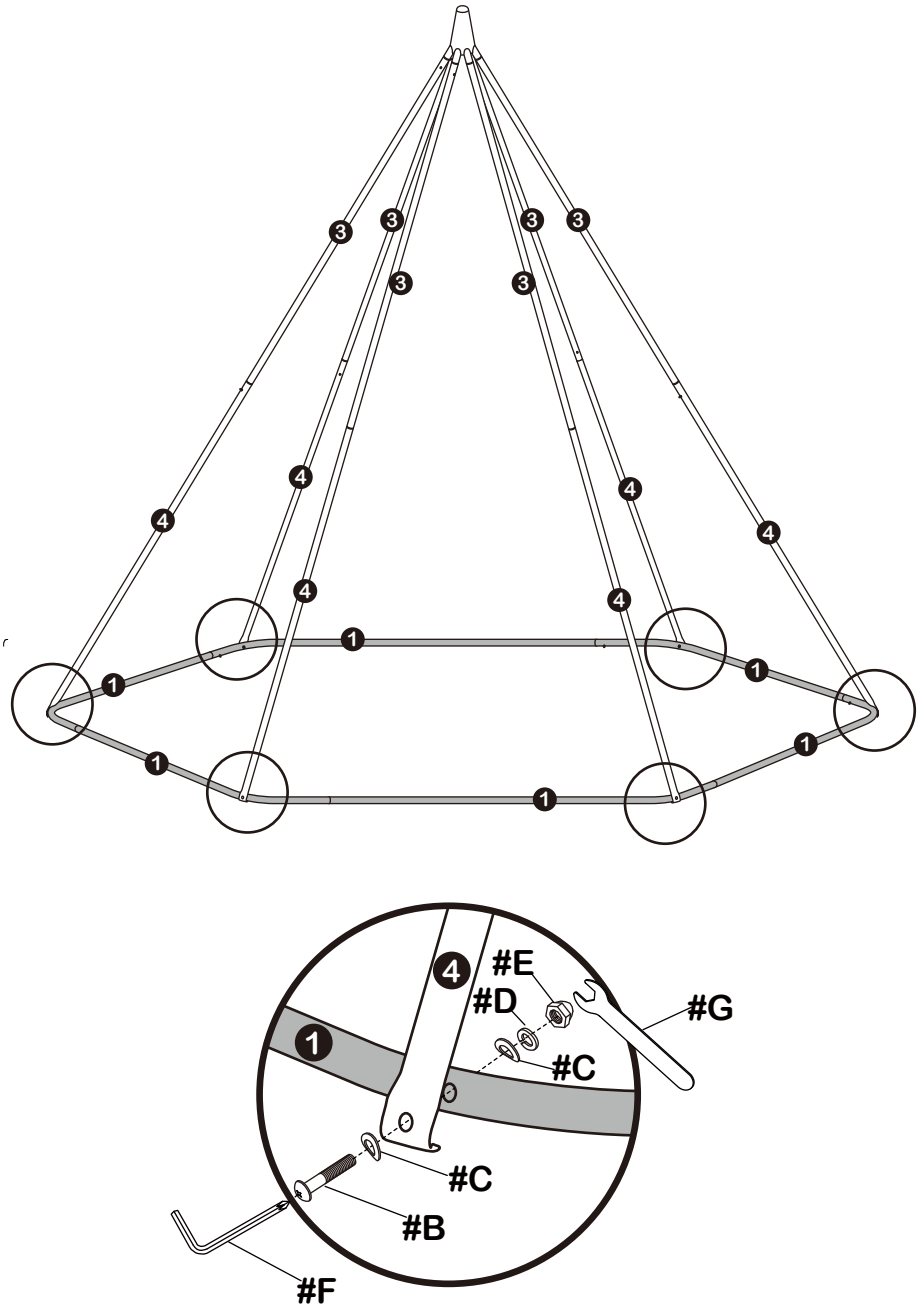
Figure 2



# Assembly Instructions

## Step 3

Secure 4 to 1 using B, C, D and E as shown. Use F and G to tighten.







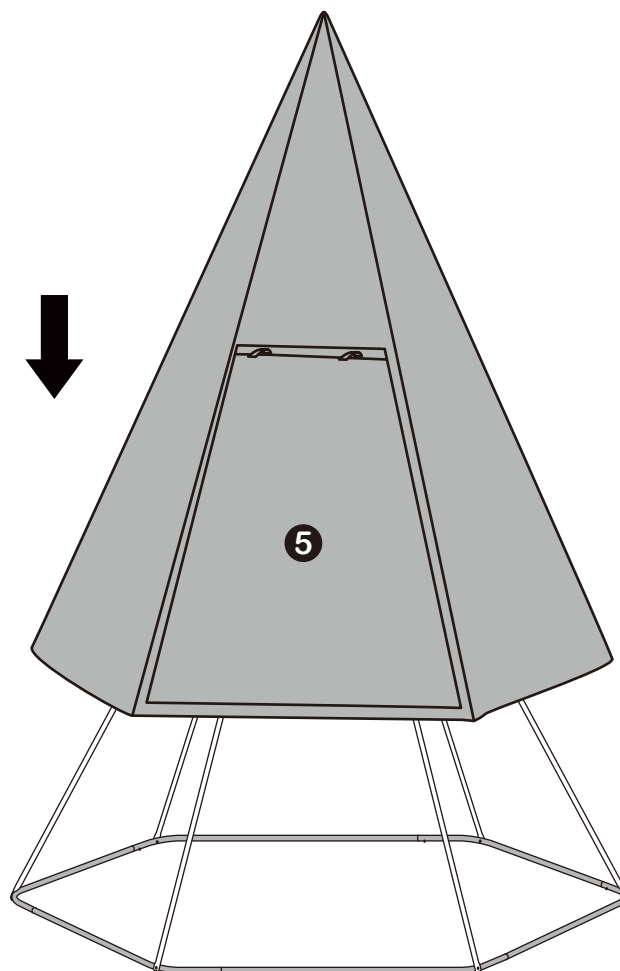
			
B	C	D	E
x 6pcs	x 6pcs	x 6pcs	x 6pcs

Figure 3

# Assembly Instructions

## Step 4

Install the canopy (5) over the assembled frame as shown.



**Figure 4**



# Assembly Instructions

## Step 5

Secure the canopy to the frame by fastening all the velcro straps as shown.

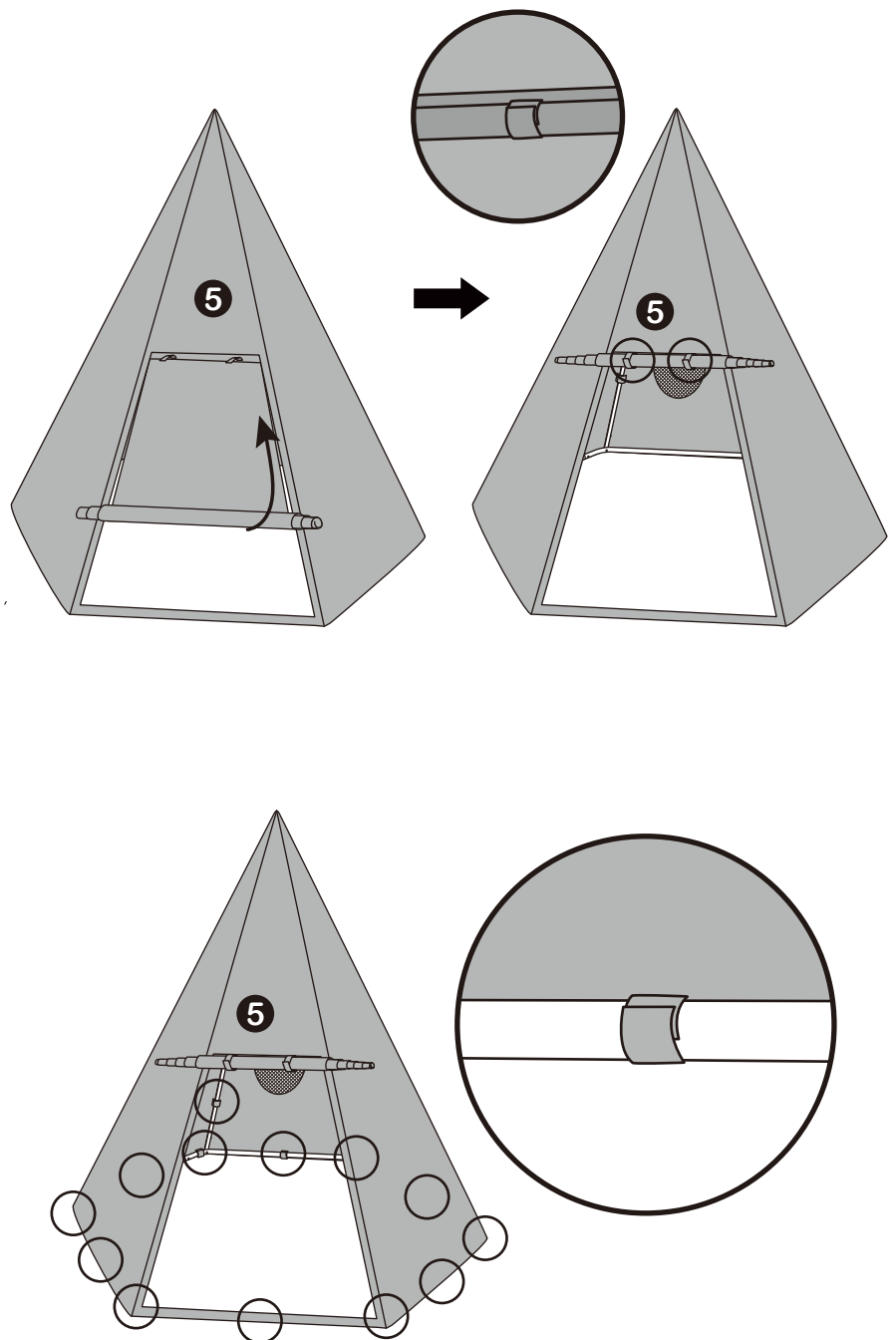
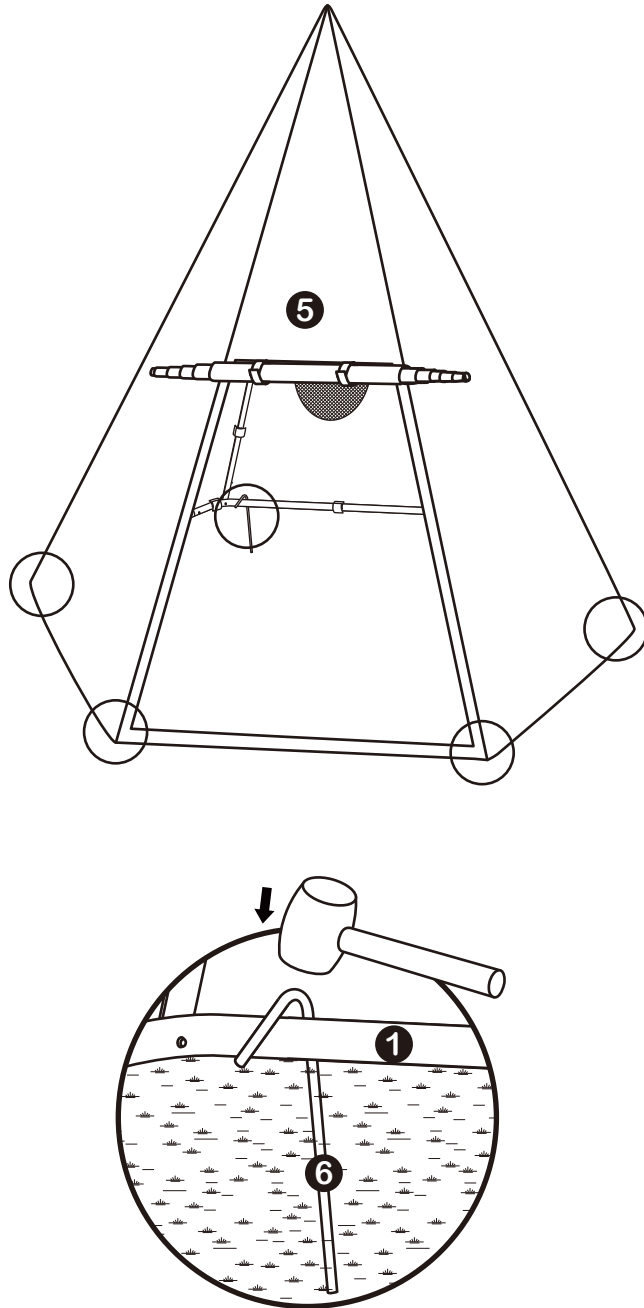


Figure 5

# Assembly Instructions

## Step 6

Use a hammer to insert the 6 anchors fully into the ground as shown.



**Figure 6**

# Care and Maintenance

## General

This product was designed and manufactured with quality materials and craftsmanship.

If correct care and maintenance is taken, it will provide users with longer usage for fun and enjoyment.

### Inspect regularly for:

- CHECK ALL NUTS AND BOLTS TWICE MONTHLY DURING THE USAGE SEASON FOR TIGHTNESS AND TIGHTEN AS REQUIRED. IT IS PARTICULARLY IMPORTANT THAT THIS PROCEDURE BE FOLLOWED AT THE BEGINNING OF EACH USAGE SEASON.
- Never use pliers or power tools to tighten up screws - these can cause damage to both the paintwork and the special anti - corrosion plating.
- Tighten all nuts and bolts securely. Replace as needed. If not checked regularly, bolts can be loose or missed and components can become detached and cause injuries.
- Check the unit at the beginning of the usage season and monthly thereafter for evidence of deterioration.
- Immediately remove and replace any items that appear to be weak or broken.
- When the time comes to disassemble and dispose of this product, please completely disassemble the unit and discard of it in a safe place and manner so as not to present any hazard to any individual. It is important to check and maintain the main parts at regular intervals. If these checks are not carried out, the toy could overturn or otherwise become a hazard. Whenever practical, the instructions shall also be affixed to the toy.
- **IMPORTANT! KEEP FOR FUTURE REFERENCE.**

### WARNING!

Ensure product is properly anchored to the ground before use. For outdoor use only. To be played in an open area with adult supervision. This item is not for user weighing more than 45kg. This product is intended for use by children age 3-8 years. For family domestic use only. As an extra precaution, check this toy regularly for signs of wear or damage. Packaging materials are not toys. Please remove all packaging and packing tags/wires before allowing children to use. Maintenance to be carried out under the direct supervision of a responsible adult. Colour, designs and decorations may vary from those shown in the photographs.



**WARNING! Not suitable for children under 3 years due to small parts, choking hazard.**



If you need help or have damaged or missing parts, call the Customer Helpline: (+44) 0330 0904 420  
Produced for Chad Valley Toys. Argos Ltd. Country of origin: China  
Address: 489 - 499 Avebury Boulevard, Central Milton Keynes, MK9 2NW. [www.argos.co.uk](http://www.argos.co.uk)