

BaByliss[®]MEN



PRECISION CUT

Model 7756U

SAFETY CAUTIONS

- This appliance should only be used as described within this instruction book. Please retain for reference.

IMPORTANT CHILD SAFETY

WARNING! Polythene bags over the product or packaging may be dangerous. To avoid danger of suffocation, keep away from babies and children. These bags are not toys.

IMPORTANT SAFETY

- Do not immerse the appliance in water or other liquids.
- Always inspect the appliance before use for noticeable signs of damage. Do not use if damaged or if the appliance has been dropped. In the event of damage contact the Conair Customer Care Line (refer to 'UK After Sales Service' section for further information).
- Only use the attachments supplied with this appliance.
- Do not leave the appliance unattended when switched on.
- Do not place the appliance on any surface whilst in operation.
- Special care is required when using the appliance close to the ears, eyes and face.
- This appliance should not be used by adults whose reduced physical, sensory or mental capabilities, or whose lack of experience and knowledge, might cause a hazard, unless they have been correctly instructed to understand the safe use and hazards involved and are adequately supervised.
- Careful adult supervision is required when this appliance



is used on or near children. Do not use on very young children.

- This appliance should not be used, cleaned or maintained by children. Keep out of reach of children.
- Always ensure that this appliance is kept out of the reach of children at all times, particularly during use and whilst cooling.
- Allow the appliance to cool before storing away.
- This product contains batteries (NiMH rechargeable 3.6V) that are not to be removed from the appliance for charging.
- The batteries in this appliance are non-replaceable by the end user. Only an authorised engineer should perform this task for safety reasons.
- The supply terminals are not to be short circuited.
- For indoor, household, domestic use only.
- For the purposes of recharging the battery, only use the detachable charging supply unit provided with this appliance.
- This product complies fully with all appropriate EU and UK Legislation and the standards relevant to this type and class of appliance. We are an ISO9001:2015 credited company that continually evaluates our Quality Management System performance. If you have any queries regarding product safety and compliance, please contact the Conair Customer Care Line (refer to «UK After Sales Service» section).
- The battery should be removed for safe disposal at the end of its life.

- When the battery has run down, it should be disposed of at a recycling centre to safeguard the environment. If the battery leaks, avoid touching it and dispose of it at a recycling centre.

BaByliss[®]MEN

FEATURES

- Cord/ Cordless operation
- 13 Cutting lengths 0.5-24mm
- Slide control length adjustment
- 8 hour charge 60 min run time
- Storage pouch

INSTRUCTIONS FOR USE

IMPORTANT! Only use the adaptor and attachments supplied with this appliance.

Charging the Appliance

- Your BaBylissMen Hair Clipper is equipped with NiMH batteries.
- Before using for the first time, the appliance should be fully charged continuously for 8 hours. This initial super-charge ensures optimum power performance to ensure smooth fast trimming every time. Maximum battery capacity will only be reached after 3 charging and discharging cycles.
- A full 8 hours charge will provide approximately 60 minutes of cordless use.
- Ensure the appliance is switched off.
- Insert the appliance into the charging and place the adaptor plug directly into the main clipper unit.

Preserving the batteries

In order to maintain the optimum capacity of the rechargeable batteries, the clipper should be fully discharged and then recharged for 8 hours every 6 months.

Mains Operation

- Ensure the appliance is switched off.
- Connect the adaptor to the base of the appliance and plug the adaptor into a suitable mains socket.
- The red LED will appear when the adaptor is correctly inserted into the appliance and connected to the mains.
- The appliance is now ready for use.
- **NOTE:** The appliance should not be used for longer than 20 minutes when operated from the mains.

Cordless Operation

- Insert the adaptor into the base of the appliance, plug into a suitable mains socket and switch on. The red LED will appear when the adaptor is correctly inserted into the appliance and connected to the mains.
- Once the appliance is fully charged, unplug the adaptor from the mains socket and appliance and prepare for use.

Oiling Instructions

IMPORTANT! It is highly recommended before each use to oil the blades with the oil provided. This ensures optimum cutting performance. For the first use you will need to use the oil supplied with the product, unscrew the cap and cut off the very end of the plastic tube with a pair of scissors to release the oil. To oil the blades ensure the unit is switched on. Gently squeeze the oil tube and apply 2 drops of oil onto the blades. Leave the unit on for a further few seconds to allow the oil to thoroughly spread the length of the blades. Switch off the unit and remove any excess oil by gently dabbing with a cloth.

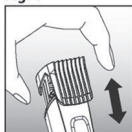
Comb Guides

The hair clipper has a comb guide that features 12 cutting lengths.

Cutting Length	Grade
2mm	#1
4mm	#2
6mm	#3
8mm	#4
10mm	#5
12mm	#6
14mm	#7
16mm	#8
18mm	#9
20mm	#10
22mm	#11
24mm	#12

- To change the length, simply press the top of the button on the back of the comb guide and push up or down. The measurement setting is on the side of the comb guide.
- To remove the comb guide press the top of the button on the back of the comb guide and push up or down. The measurement setting is on the side of the comb guide.
- Lift the comb guide up and away.
- To insert a new guide, insert both legs on the guide into the grooves and slide down until it clicks.
- To put in or remove the cutting guide, check that the appliance is switched off. Adjust the cutting length to the maximum beforehand using the adjustment slide and push the guide in until it clicks into place or pull the guide upwards to remove it. (Fig. 1).

Fig. 1



Preparation for Use

- Always inspect the appliance before use to ensure the clipper blades are free from hair, debris etc.
- For best performance, use on clean, dry hair that has been combed until tangle-free.

NOTE: The appliance should not be used for longer than 20 minutes of continuous use.

Clipping

For an all over even cut:

- Select a length from 2-24mm.
- Switch the clipper on and the blades will start to move.
- Starting at the nape of the neck, hold the clipper with the teeth of the clipper pointing upwards, ensuring that the comb guide is resting flat against the head.
- Slowly move the clipper upwards and outwards through the hair towards your crown, against the direction of the hair growth. The comb guide will help to lift the hair while the blades cut the hair at the desired length.
- Once the desired length is achieved at the back of the hair, start clipping the top and sides.
- Hold the clipper to the front of your hair with the teeth pointing towards the back of your head and move the clipper towards your crown. Repeat if necessary, moving in rows from the front and the sides of your head to the back.
- You should achieve an even length cut all over your head.

For a shorter back and sides, with length on the top:

- Switch the clipper on and the blades will start to move.
- Hold the clipper to the front of your hair with the teeth pointing towards the back of your head and move the clipper towards your crown. Repeat as necessary, moving in rows from the front and the sides of your head to the back.
- If you wish to take the back and sides of your hair to a shorter length, switch off the appliance and attach a shorter comb guide.
- Starting at the nape of the neck, with the comb guide flat against

the head, move the clipper upwards and outwards over the area you want to take shorter.

- Repeat on the sides of the hair, starting with the teeth of the clipper pointing upwards and comb guide flat against the area above the ear, again moving the clipper upwards and outwards.

Outlining:

- To tidy up the edges around your cut e.g. neckline and sideburns, detach the comb guide.
- Hold the appliance upside down, so the front of the clipper is facing towards your head.
- Hold the clipper straight on your sideburns or neckline and move the clipper downwards. This will give you a clean, smooth finish.

CLEANING & MAINTENANCE

For easy cleaning, the blades on your BaBylissMen clipper are removable. Regular cleaning will maintain their high performance level. To clean proceed as follows:

- Remove the comb guide after use. Rinse under running water and dry thoroughly before storage or use.
- The clipper blade are removable for easy cleaning. To remove the blades, hold the clipper with the blades pointing upwards and push the underside of the blade teeth upwards to remove. Do not disassemble the blades.
- Using the cleaning brush, brush and blow away any remaining hair.
- To preserve your clipper's efficiency, we recommend cleaning the blades regularly. After cleaning, switch the appliance on and oil the blades using a few drops of the lubricating oil supplied. Only use the lubricating oil supplied with the appliance as this is specifically formulated for high speed clippers and does not evaporate or slow the blades.

NOTE: Do not attempt to repair or replace the blades. In the event that the blades become blunt or damaged, contact the Conair Customer Care Line (refer to UK «After Sales Service» section for further information).



SAFE DISPOSAL

To minimise hazards to health and the environment at the end of this product's life, laws dealing with Waste Electrical and Electronic Equipment (WEEE) and The Waste Battery Directive require you to dispose of this product at a suitable collection facility where it will be sent for appropriate recycling. Please contact your local authorities for more details on recycling and safe disposal of these in your area.

INSTRUCTIONS FOR USE

Battery Operated Trimmer

Preparation for Use

- Always inspect the appliance before use for noticeable signs of damage. Do not use if damaged.
- Ensure the trimming heads are free from hair and debris (refer to Cleaning and Maintenance section for further information).

Trimmer Head

- To remove the trimming head, turn the head anti-clockwise until the 'I' mark aligns with the '←' mark, then lift the head gently. (Fig. 1).

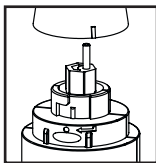


Fig. 1.

- To reassemble the head onto the body, align the 'I' mark on the head with the '←' mark on the body and then turn clockwise until the 'I' mark aligns with the 'circle' mark on the body (Fig. 2).

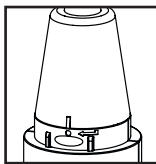


Fig. 2.

Using the Trimmer

- Switch the trimmer ON.
- Move the trimmer upwards and outwards through the hair you wish to remove. The wide trimmer is ideal for tidying sideburns and small areas of facial hair.
- The wide trimmer head is ideal for shaping and styling the neckline and sideburns or making small touch ups to any facial hair to add the finishing touches, for a professional looking cut.

Note: never submerge unit handle into water.

CLEANING & MAINTENANCE:

To maintain optimum performance, the appliance should be cleaned after each use.

- Ensure the appliance is switched 'OFF'.
- Gently blow any hairs from the trimmer head.
- Head can be removed and rinsed under the tap.
- Allow the trimmer to dry thoroughly before storing.

UK GUARANTEE

The Conair Group Ltd, Unit 3, Waterfront Business Park,
Fleet GU51 3TW

This BaBylissMen appliance is guaranteed for consumer use for 3 years and is only valid within the United Kingdom.

This guarantee covers consumer use only **i.e.** defects occurring under normal use within the home from date of purchase or date of delivery, whichever is later.

If the product develops a fault due to defects in materials or manufacture **within 12 months** from the date of purchase, to avoid delays and unnecessary inconvenience, where possible please return the product to the point of purchase for an exchange,

If the product develops a fault due to defects in materials or manufacture **after 12 months** from the date of purchase, and within the guarantee period, Conair UK After Sales Service will repair or replace the product.

Exclusions

This guarantee will no longer be valid meaning that The Conair Group Ltd will not be liable to repair or replace your product where:

- 1.) The appliance has been used on a voltage supply other than that which is marked on the product, or advised within this instruction booklet
- 2.) The appliance has been purchased from an unauthorised stockist*
- 3.) The appliance is used for professional / non domestic usage
- 4.) Repairs or alterations have been attempted by unauthorised persons
- 5.) The failure of the appliance is a direct result of misuse
- 6.) The failure is a result of not following the instructions for use

This guarantee does not cover any cosmetic damage due to misuse of the product nor any damage to persons or property that occurs because of product misuse.

**unauthorised stockists include, but are not limited to online auction sites, private sellers and those selling second hand goods, refurbished products etc*

Please contact the Conair Customer Care Line on 03705 133 191 (09:00 to 17:00 Monday to Friday) or e-mail ukinfo@conair.com for further information on authorised stockists.

It is important to retain your proof of purchase. We recommend attaching your receipt to this page.

Even where a refund may be applicable, no refund will be provided without a valid receipt or proof of purchase, we will only be able to offer a repair or replacement service. Please note this does not apply if the product was purchased directly from The Conair Group Ltd.

Guarantees on replacement products run from the original purchase date or date of delivery, whichever is later, and **not** from the date of replacement.

This guarantee is an additional benefit and does not affect your statutory rights as a consumer.

If you have any queries regarding this guarantee please contact the Conair Customer Care Line on 03705 133 191 (09:00 to 17:00 Monday to Friday) or e-mail ukinfo@conair.com

UK AFTER SALES SERVICE

For further advice on using the appliance, contact the Conair Customer Care Line on 03705 133191 (09:00 to 17:00 Monday to Friday) or email your enquiry to ukinfo@conair.com.

If you should need to return your appliance to us please send it to the following address:

Customer Care Centre
Conair Logistics
Unit 4
Revolution Park
Buckshaw Avenue
Buckshaw Village
Chorley
PR7 7DW

Please enclose your name and address, together with a copy of proof of purchase and details of the fault.

Please note this Instruction Booklet is not the guarantee.

