

Tefal®

EN



DT70XX/DR70XX

www.tefal.com

Important safety instructions

When using your appliance, basic precautions should always be followed, including the following:

- Read all instructions before using this product.
- This product has been designed for indoor, domestic use only. Any commercial use, inappropriate use or failure to comply with the instructions, the manufacturer accepts no responsibility and the guarantee will not apply.
- Always plug your appliance:
 - into a mains circuit with voltage between 220 V and 240 V.
 - into an earthed electrical socket.Connecting to the wrong voltage may cause irreparable damage to the appliance and will invalidate your guarantee.
- Do not use an extension lead. If you accept liability for doing so, only use an extension lead which is in good condition, has a plug with an earth connection and is suited to the power rating of the appliance.
- Completely unwind the power cord before plugging into an earthed socket.
- Use the appliance for its intended use only.
- To reduce the risk of contact with hot water emitting from steam vents, check the appliance before each use by holding it away from the body and operating the steam button.

- This appliance can be used by children aged from 8 years and above and persons with reduced physical, sensory or mental capabilities or lack of experience and knowledge if they have been given supervision or instruction concerning use of the appliance in a safe way and understand the hazards involved. Children shall not play with the appliance. Cleaning and user maintenance shall not be made by children without supervision.
- Never disconnect the appliance by pulling on the power cord; instead, grasp the plug and pull to remove from the socket outlet.
- Do not allow the cord to touch hot surfaces or come into contact with rough or sharp edges. Let the appliance cool completely down before putting away. Loop the cord loosely around the appliance when storing.
- Always disconnect the appliance from the electrical supply when filling with water or emptying when cleaning, when removing or refitting accessories and when not in use.
- Care should be taken when using the appliance due to the emission of steam.
- Do not operate the appliance with a damaged cord or if the appliance has been dropped or damaged. To avoid the risk of electric shock, do not disassemble or attempt to repair the appliance. Take it to the nearest approved service centre for examination and repair. Incorrect reassembly or repair could cause a risk of

fire, electrical shock or injury to persons when the appliance is used.

- Close supervision is necessary for any appliance being used by or near children.
- Do not leave the appliance unattended while plugged in or while it is still hot.
- Burns could occur from touching hot metal or plastic parts, hot water or steam. Exercise care when you empty a steam appliance. There may be hot water in the reservoir.
- If an extension cord is absolutely necessary, a cord with a 16A ampere rating shall be used. A cord rated for less amperage can result in a risk of fire or electric shock due to overheating. Care shall be taken to arrange the cord so that it cannot be pulled or be tripped over.
- To protect against a risk of electric shock, do not immerse the appliance in water or other liquids.
- Do not direct steam at people, animals or clothes while they are being worn.
- This appliance is not intended for use by persons (including children) with reduced physical, sensory or mental capabilities, or lack of experience and knowledge, unless they have been given supervision or instruction concerning use of the appliance by a person responsible for their safety. Children should be supervised to ensure that they do not play with the appliance.
- The use of accessory attachments other than those provided by the manufacturer is not recommended

- and may result in fire, electric shock or personal injury.
- The appliance must be rested on a stable, heat and waterproof surface. When placing the appliance on its base, ensure that the surface on which the base is placed is stable.
 - The appliance must only be rested on a flat, stable, heat and water-resistant surface.
 - The appliance must not be used if it has been dropped, if there are visible signs of damage or if it is leaking.
 - Check the electrical power cord for sign and wear or damage prior to use. If the electrical power cord is damaged, it must be replaced at an approved service centre to avoid any danger.
 - Do not use other descaling products than the one cited in the IFU.

What water to use?

• Your appliance has been designed to use untreated tap water.

Do not use pure demineralised or pure distilled water, water from clothes dryers, scented or softened water, rain water, filtered, bottled or boiled water, water from refrigerators, batteries or air conditioners as these may damage the appliance. These types of water contain organic waste, mineral elements that become concentrated when heated and cause spitting, brown staining, leaking or premature wear on your appliance. If your water is very hard, mix 50% untreated tap water with 50% distilled water (available in hardware stores). This water contains organic waste materials or minerals that concentrate under the effect of heat and cause spitting, brown colouring or premature ageing of your appliance.

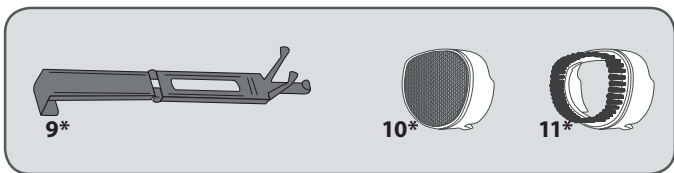
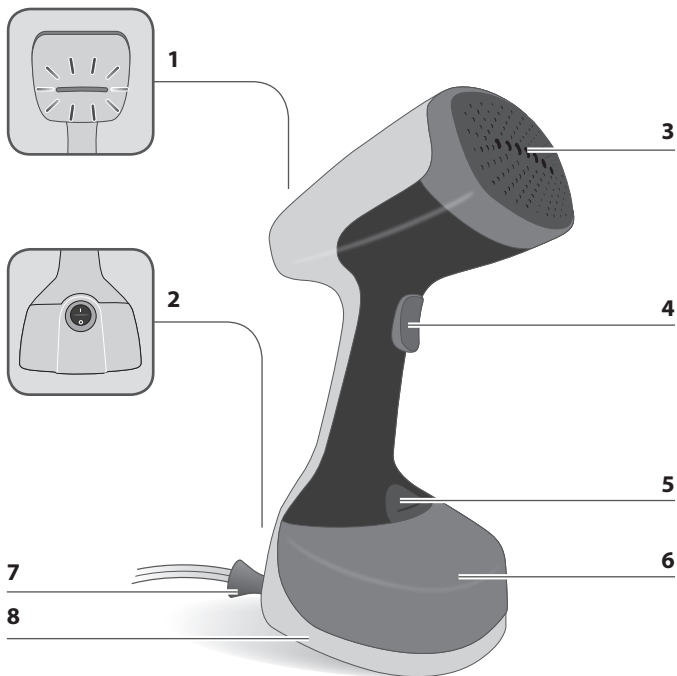
SAVE THESE INSTRUCTIONS



Environment protection first !

① Your appliance contains valuable materials which can be recovered or recycled.

♻️ Leave it at a local civic waste collection point.



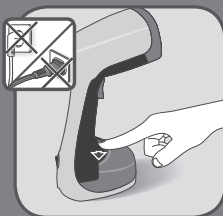
PRODUCT DESCRIPTION

- | | |
|-------------------------------------|-----------------------------|
| 1. EN On/Off light indicator | 7. EN Cord exit |
| 2. EN On/Off button | 8. EN Standing base |
| 3. EN Steam head | 9.* EN Door hook |
| 4. EN Steam button | 10.* EN Steam cover |
| 5. EN Water tank locker | 11.* EN Fabric brush |
| 6. EN Removable water tank | |

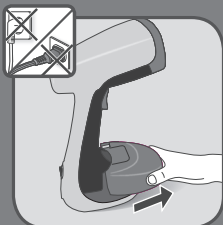
***EN** Depending on model

1 BEFORE USE

When you first use the appliance, some smoke or a harmless odour may be produced or there may be a small discharge of particles. This will not affect the use of the appliance and will disappear quickly.



EN Press the water tank locker.



EN Remove the water tank.



EN Open the water inlet stopper.

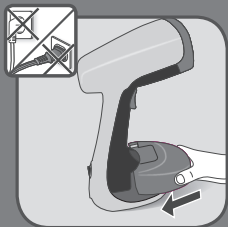


EN Fill the water tank with a maximum of 150 ml of untreated tap water (See section "what water to use").



EN

Close the water inlet stopper.



EN

Return the water tank to its place for locking on the appliance. Make sure that the water tank is fully set in place.



EN

As steam is very hot: never attempt to remove creases from a garment while it is being worn, always hang garments on a clothes hanger.

2 ACCESSORIES



EN

The door hook allows you to hang your garment for steaming.



EN

The fabric brush opens the weaves of the fabrics for better steam penetration.

Before removing or attaching the steam brush, unplug your appliance and allow it to cool down, for one hour.



EN

The steam cover filters water impurities and protects fabrics from water drips.

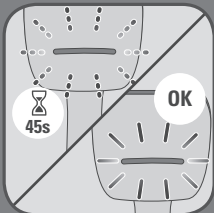
Before removing or attaching the steam cover, unplug your appliance and allow it to cool down for one hour.

3 USE



EN

Plug-in the appliance.
Switch on the appliance.



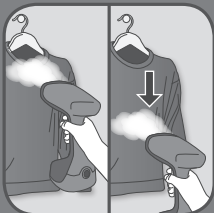
EN

Wait until the light stops flashing
(approximately 45 seconds).
When the light is steady the appliance
is ready to use.



EN

Press the steam button with the steam
brush facing away from you holding it
in a vertical position.



EN

Tips: Check the fabric's label for recommendations. We recommended that you test acrylic, nylon or other synthetic fabrics in an inconspicuous area to ensure these fabrics are not damaged by hot steam.

For optimal use, pass the steam jets over your garment from top to bottom.



EN

Warning : Never steam a garment while it is being worn.

4 AFTER USE

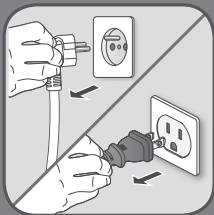


OFF



EN

Press the On/Off button to switch the appliance off.



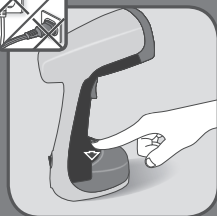
EN

Unplug the appliance.



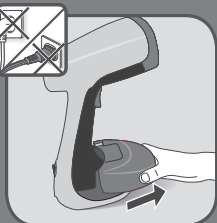
EN

Wait for an hour for your appliance to cool before storing.



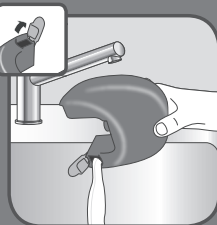
EN

Press the water tank locker.



EN

Remove the water tank.



EN

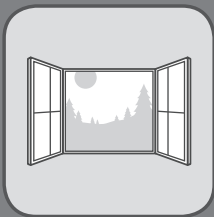
Empty the water tank completely.



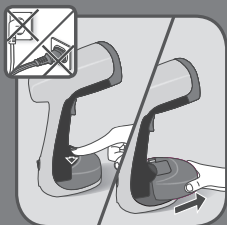
EN

Return the water tank to its place on the appliance, lock it.

5 ANTI CALC



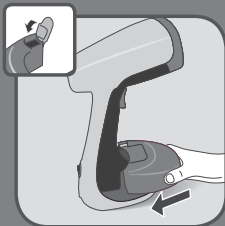
EN Do this operation in a vented room.



EN Press the water tank locker.
Remove the water tank.

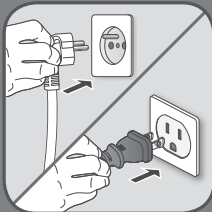


EN Fill the water tank with 50% water and
50% white vinegar.
Do not use other descaling products.



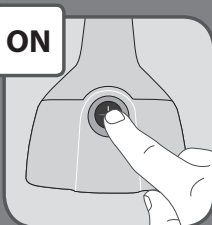
EN

Return the water tank to its place on the appliance. Make sure the water tank is fully set in place and locked.



EN

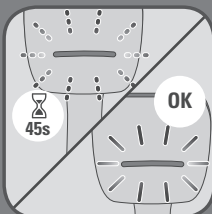
Plug-in the appliance.



ON

EN

Switch on the appliance.



EN

Wait until the light stops flashing (approximately 45 seconds).
When the light is steady the appliance is ready to use.



EN

To release steam, press continuously on the steam button.



EN

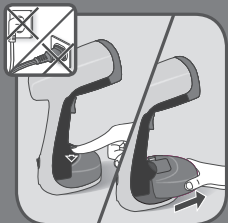
Allow the appliance to run until the water tank has completely emptied.

OFF



EN

Press the On/Off button to switch the appliance off.



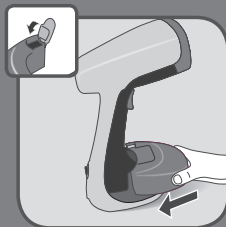
EN

Unplug the appliance and press the water tank locker.
Remove the water tank.



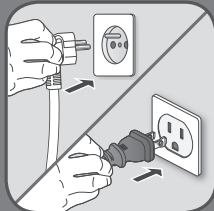
EN

Fill the water tank with a maximum of 150 ml of untreated tap water.



EN

Return the water tank to its place on the appliance. Make sure the water tank is fully set in place and clicked.



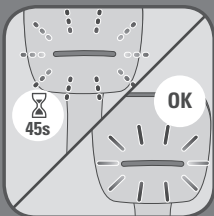
EN

Plug in the appliance.



EN

Switch on the appliance.



EN

Wait until the light stops flashing (approximately 45 seconds).
When the light is steady the appliance is ready.



EN

To release steam, press continuously on the steam button.



EN

Allow the appliance to run until the water tank has completely emptied.

6 CLEANING



1H



EN

Wait an hour for the appliance to completely cool down.



EN

Clean the plastic parts of the appliance with a damp cloth.



EN

Never wash or rinse appliance directly over a sink.

TROUBLESHOOTING

PROBLEM	POSSIBLE CAUSES	SOLUTIONS
There is no steam.	The appliance is not plugged in, or not switched on.	Check that your appliance is correctly plugged in and switched on.
	The water level is too low.	Unplug your appliance and refill it.
	The steam pump has not been primed.	Press the steam trigger continuously for a few seconds to begin steaming.
	You are using the appliance for the first time.	Press the steam trigger continuously for a few seconds to begin steaming.
	The water tank is not fully in place.	Ensure that stopper is closed and that the water tank snaps when put into place.
The appliance does not heat.	It is not plugged in, or not switched on.	Plug in your appliance and switch on.
Water leaks.	The water tank is not fully in place or the stopper is not closed properly.	Ensure that stopper is closed and that the water tank snaps when put into place.
Steam rate decreases.	Calc Sealing	Refer to 'ANTI CALC' section in instructions for use.
The steam leaves stains on the fabric or the appliance spits	You are using water with additives.	Never add any additive in the water tank.
	The appliance has not been cleaned enough after the descaling operation.	Read carefully the 'ANTI CALC' section in instructions for use.
	You are using other liquids than white vinegar to descale the product.	Use only white vinegar during 'ANTI CALC' procedure.
Appliance steams continuously.	The steam trigger is on the lock position.	Unlock the steam trigger.





1800145056