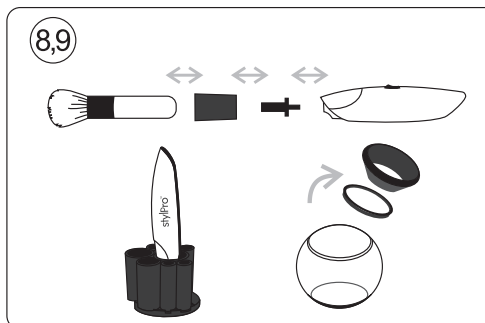
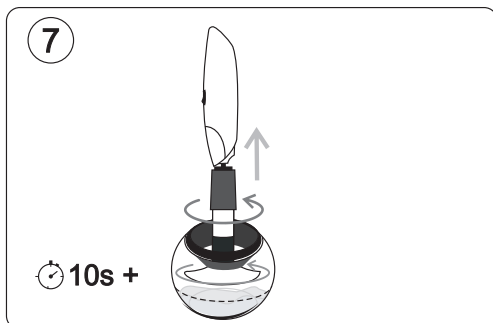
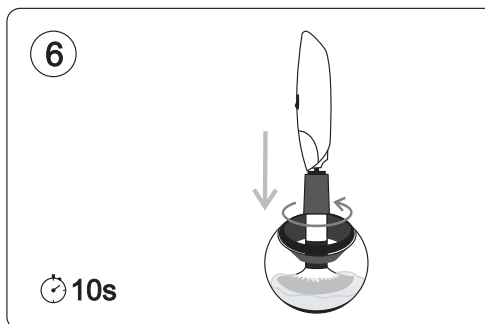
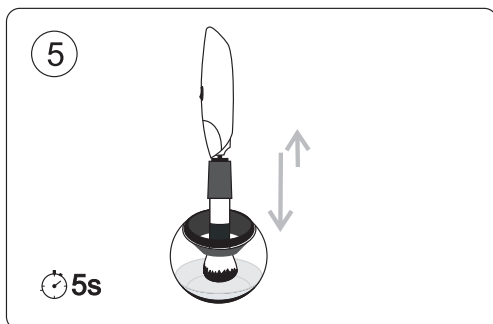
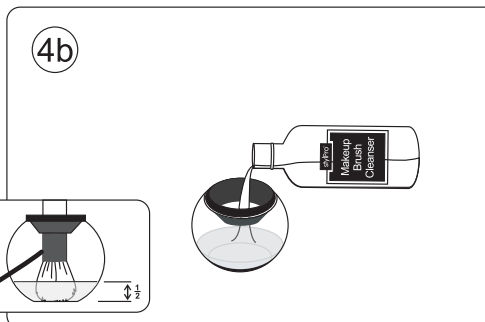
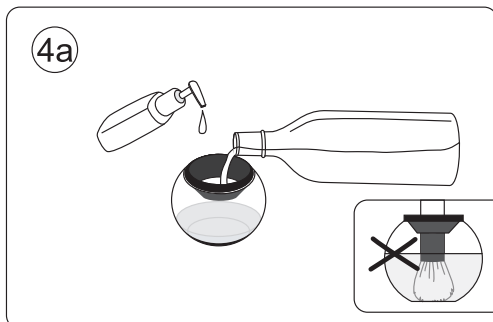
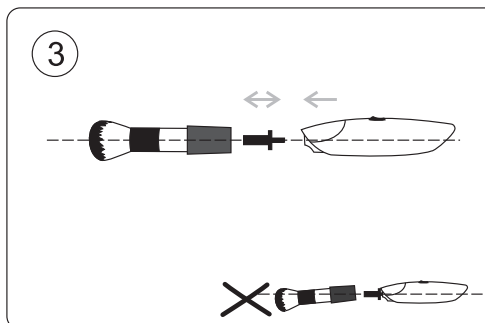
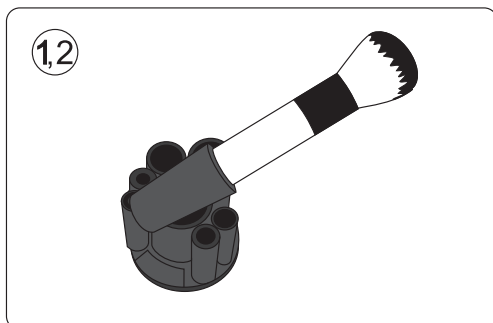
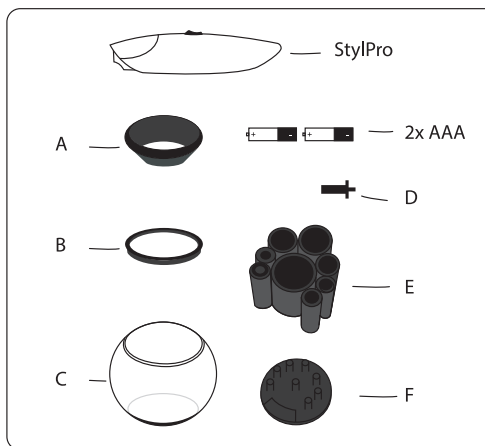


HOW TO USE stylPro™

INTRODUCTION:

Professionals recommend cleaning makeup brushes every two to four weeks, but traditional cleaning methods are messy, laborious and can leave brushes wet and unusable for up to 24 hours. The StylPro leaves brushes clean and dry - ready to re-use in just 30 seconds! Get the most from your makeup brushes with StylPro.

Please note that both makeup brushes and this device are delicate - please carefully read and follow these instructions before starting and keep them for future reference. For hints and tips see www.stylTom.com




(EN) BEFORE FIRST USE:

1. Check batteries are inserted correctly and REMOVE SMALL PLASTIC BATTERY TAB.
2. Ensure 8 silicone (E) COLLARS are on the (F) BASE.
3. Attach the silicone (B) RING to the plastic (A) NECK, then insert the combined (B) RING and (A) NECK onto the (C) BOWL.

HOW TO USE:

1. Select brush, note what type of makeup is on the brush - is it water soluble or non-soluble?
2. Now select the best fitting (E) COLLAR and push the brush in, until it is held firm and straight. Remove the (E) COLLAR and brush from the (F) BASE.
3. Push the (D) SPINDLE into the square hole at the bottom of the (E) COLLAR, then click the other end into the STYLPRO. Check the STYLPRO is securely attached to the (D) SPINDLE, (E) COLLAR and brush in a straight line. Adjust the brush if necessary. Any slight leaning will affect the ability of the STYLPRO to clean and dry, and may cause it to rattle.
4. Fill the (C) BOWL:
 - A. For water-soluble makeup (for example: blusher, bronzer and loose powder), squeeze a small amount (4ml/0.14floz) of your preferred anti-bacterial liquid soap into the (C) BOWL. Please consult your brush manufacturer for advice on the best cleaner to use. Add water to the bowl until the water level is half the height of the brush bristles you wish to clean. If you are unsure whether the makeup is water soluble, try this step first and if the brush is not totally clean, follow the non-water soluble makeup instructions.
 - B. For non-water soluble makeup (for example foundation), add 10-20ml (0.34-0.68floz) of StylPro Makeup Brush Cleanser, depending on brush size (sold separately at www.stylpro.com), into the bowl. Ensure the solution level is less than half the height of the brush bristles you wish to clean.
5. Softly dunk the brush up and down in the liquid, pressing the brush lightly into the (C) BOWL to open the bristles slightly. Work liquid into the bristles. Repeat for 5 seconds. To avoid damaging the brush do not allow the metal ferrule to go under the water/cleanser level.
6. After 5 seconds: whilst gently pressing the brush down in the (C) BOWL, switch on the STYLPRO. Gently lift the StylPro – the brush will start to spin rapidly, causing the liquid to splash up. Slowly move the brush up and down for 10 seconds, keeping the brush underneath the liquid level at all times. At this stage, if the brush is not aligned straight, it might start to wobble from side to side and rattle against the (C) BOWL. If this happens, loosen your grip and place a finger gently on the top of the STYLPRO. If this it does not resolve the problem, switch off the StylPro and consult the Questions and Answers section at www.stylpro.com.
7. After 10 seconds - Gradually lift the spinning brush out of the liquid (but keep inside the (C) BOWL) and leave it to spin above the liquid level. As the brush lifts from the dirty liquid, the bristles will splay out and you will see the water/cleanser and dirt being spun out of the brush. Leave the brush spinning above the liquid. After 10 seconds switch off the STYLPRO. Repeat this step if you would like it drier. Reshape the bristles with your fingers if necessary.
WARNING: Do not over-spin as this may damage the brush. We advise you NOT to spin dry continuously for more than 10 seconds at a time, then check the brush and if still wet, repeat.
8. Detach the (D) SPINDLE from the STYLPRO and the (E) COLLAR from the (D) SPINDLE remove brush from (E) COLLAR. Put (E) COLLAR and STYLPRO back on the (F) BASE.
9. Remove the (A) NECK from the (C) BOWL, separate the (B) RING from the (A) NECK, then wash the (C) BOWL, (A) NECK and (B) RING by hand with soap and water.

BATTERIES: ONLY AAA BATTERIES SHOULD BE USED. DIFFERENT TYPES OF BATTERIES OR NEW AND USED BATTERIES ARE NOT TO BE MIXED. THE SUPPLY TERMINALS ARE NOT TO BE SHORT-CIRCUITED. REMOVE BATTERIES BEFORE STORING THE PRODUCT FOR EXTENDED PERIODS OF TIME. DO NOT LEAVE DISCHARGED BATTERIES IN THE PRODUCT AS THEY MAY LEAK AND CAUSE CORROSION. DO NOT DISPOSE OF OLD BATTERIES IN A FIRE AS THEY MAY EXPLODE. DO NOT OPEN OR DISMANTLE THE BATTERIES. RELEASED ELECTROLYTE FROM THE BATTERIES IS CORROSIVE AND MAY CAUSE BURNS OR INJURY TO THE EYES OR SKIN. THE ELECTROLYTE MAY BE TOXIC IF SWALLOWED. EXERCISE CARE WHEN HANDLING THE BATTERIES. DO NOT ALLOW CONDUCTIVE MATERIALS SUCH AS RINGS, BRACELETS OR KEYS TO TOUCH THE BATTERIES, OTHERWISE A SHORT CIRCUIT MAY CAUSE THE BATTERIES AND/OR CONDUCTIVE MATERIAL TO OVERHEAT AND CAUSE BURNS.

 **CORRECT DISPOSAL OF THIS PRODUCT:** PLEASE RECYCLE USED BATTERIES AT YOUR NEAREST RECYCLING CENTRE. THIS SYMBOL ON THE PRODUCT AND ACCOMPANYING DOCUMENTS MEANS THAT USED ELECTRICAL AND ELECTRONIC EQUIPMENT (WEEE) SHOULD NOT BE MIXED WITH GENERAL HOUSEHOLD WASTE. FOR PROPER TREATMENT, RECOVERY AND

RECYCLING, PLEASE TAKE THIS PRODUCT TO DESIGNATED COLLECTION POINTS WHERE IT WILL BE ACCEPTED FREE OF CHARGE. ALTERNATIVELY, IN SOME COUNTRIES, YOU MAY BE ABLE TO RETURN YOUR PRODUCTS TO YOUR LOCAL RETAILER UPON PURCHASE OF AN EQUIVALENT NEW PRODUCT. DISPOSING OF THIS PRODUCT CORRECTLY WILL HELP SAVE VALUABLE RESOURCES AND PREVENT ANY POTENTIAL NEGATIVE EFFECTS ON HUMAN HEALTH AND THE ENVIRONMENT WHICH MIGHT OTHERWISE ARISE FROM INAPPROPRIATE WASTE HANDLING. PLEASE CONTACT YOUR LOCAL AUTHORITY FOR FURTHER DETAILS OF YOUR NEAREST DESIGNATED COLLECTION POINT. PENALTIES MAY BE APPLICABLE FOR INCORRECT DISPOSAL OF THIS WASTE, IN ACCORDANCE WITH YOUR NATIONAL LEGISLATION. FOR BUSINESS USERS IN THE EUROPEAN UNION: IF YOU WISH TO DISCARD ELECTRICAL AND ELECTRONIC EQUIPMENT, PLEASE CONTACT YOUR DEALER OR SUPPLIER FOR FURTHER INFORMATION.

CE MARKING: EU – DECLARATION OF CONFORMITY: AVENTOM LTD DECLARES THAT STYLPRO BC01 COMPLIES WITH THE ESSENTIAL REQUIREMENTS AND OTHER RELEVANT PROVISIONS OF DIRECTIVE 1999/5/EC. A COPY OF THE DECLARATION OF CONFORMITY IS AVAILABLE ON REQUEST. AVENTOM LTD, AMSHOLD HOUSE, GOLDINGS HILL, LOUGHTON, ESSEX, IG10 2RW, UK.

WARRANTY: THE STYLPRO LIMITED WARRANTY LASTS 1 YEAR FROM THE DATE OF PURCHASE. PLEASE KEEP THE ORIGINAL RECEIPT FOR WARRANTY SERVICE. FOR SERVICE OR REPAIR DURING THIS WARRANTY PERIOD, EMAIL INFO@STYLPRO.COM OR CALL +44 (0)20 3225 5559 WITH PROOF OF PURCHASE. IMPORTANT: THIS WARRANTY DOES NOT COVER DAMAGE RESULTING FROM ACCIDENTS, MISUSE, ALTERATIONS, ABUSE, LACK OF REASONABLE CARE OR USE OTHER THAN DESCRIBED IN THESE INSTRUCTIONS, OR PERFORMANCE OF SERVICE OR REPAIRS BY AN UNAUTHORISED SERVICE CENTRE. THIS WARRANTY IS VALID ONLY ON MERCHANDISE SOLD BY AUTHORISED RETAILERS. NOTE, THE ITEM MUST BE THOROUGHLY CLEANED PRIOR TO RETURN.

WARNINGS AND LEGAL: THIS IS NOT A TOY. THE STYLPRO IS NOT INTENDED FOR USE BY PERSONS (INCLUDING CHILDREN) WITH REDUCED PHYSICAL, SENSORY OR MENTAL CAPABILITIES, OR LACK OF EXPERIENCE AND KNOWLEDGE, UNLESS THEY HAVE BEEN GIVEN SUPERVISION OR INSTRUCTION CONCERNING USE OF STYLPRO BY A PERSON RESPONSIBLE FOR THEIR SAFETY. CHILDREN SHALL NOT PLAY WITH THE APPLIANCE. CLEANING AND USER MAINTENANCE SHALL NOT BE MADE BY CHILDREN WITHOUT SUPERVISION. PLEASE STORE WITH CARE AND OUT OF REACH OF CHILDREN. ALWAYS CONSULT THE BRUSH MANUFACTURER'S INSTRUCTIONS BEFORE SELECTING THE BEST LIQUID ANTI-BACTERIAL SOAP WHEN CLEANING MAKEUP BRUSHES. BEFORE USE, THIS PRODUCT MUST BE PROPERLY SET UP. DO NOT TAMPER WITH ANY INTERNAL COMPONENTS. THERE ARE NO USER-SERVICEABLE PARTS INSIDE THE UNIT AND OPENING THE PRODUCT WILL INVALIDATE THE WARRANTY. DO NOT ATTEMPT TO REPAIR THE PRODUCT YOURSELF. CONTACT INFO@STYLPRO.COM IF THE PRODUCT REQUIRES SERVICING. DO NOT PLACE ANY PART OF THE PRODUCT NEAR HEAT SOURCES SUCH AS RADIATORS, COOKERS, ETC. DO NOT USE THE STYLPRO FOR ANYTHING OTHER THAN ITS INTENDED USE. DO NOT OPEN THE PRODUCT OTHER THAN TO REPLACE THE BATTERIES. DO NOT ALLOW LIQUID TO GET INSIDE THE STYLPRO. THE TECHNICAL SPECIFICATION FOR THIS PRODUCT AND THE CONTENTS OF THE USER MANUAL ARE SUBJECT TO CHANGE WITHOUT NOTICE. WE CANNOT TAKE ANY RESPONSIBILITY FOR ANY DAMAGE TO BRUSHES CLEANED USING THE STYLPRO.

May contain 2x10ml sachets, Made in England
Makeup Brush Cleanser (Pentamethyl heptane)

DANGER: Flammable liquid and vapour. May be fatal if swallowed and enters airways. May cause long lasting harmful effects to aquatic life. Keep out of reach of children. Keep away from heat, hot surfaces, sparks, open flames and other ignition sources. No smoking. IF SWALLOWED: Immediately call a POISON CENTER/ doctor. Do NOT induce vomiting. If medical advice is needed, have product container or label at hand. Avoid release to the environment. Dispose of contents/ container in accordance with local regulations. Contains: ≥ 30% Aliphatic hydrocarbons.

