

PHILIPS

Gradient lightstrip extension 1 metre

Hue White and Colour
Ambiance

LED integrated

Requires a gradient lightstrip
basekit

Control with app or voice*

Add Hue Bridge to unlock more



8719514339989



Easy smart lighting

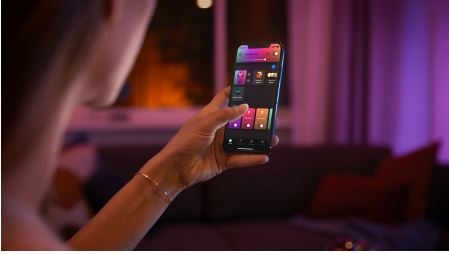
Extend your ambiance gradient lightstrip with this 1-meter extension to cover a larger area with a blend of colourful light. Only for ambiance gradient lightstrips.

Easy smart lighting

- Control up to 10 lights with the Bluetooth app
- Control lights with your voice*
- Create a personalised experience with colourful smart light
- Set the right mood with soft white light
- Unlock full suite of smart light features with Hue Bridge
- Seamlessly blend colours
- Shape, cut or extend
- Requires a Philips Hue gradient lightstrip base unit
- Dynamic light scenes

Highlights

Control up to 10 lights with the Bluetooth app



With the Hue Bluetooth app, you can control your Hue smart lights in a single room of your home. Add up to 10 smart lights and control them all with just the touch of a button on your mobile device.

Control lights with your voice*



Philips Hue works with Amazon Alexa and the Google Assistant when paired with a compatible Google Nest or Amazon Echo device. Simple voice commands allow you to control multiple lights in a room, or just a single lamp.

Create a personalised experience with colourful smart light



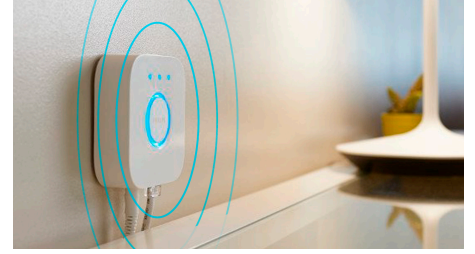
Transform your home with over 16 million colours, instantly creating the right atmosphere for any event. With the touch of a button, you can set a festive mood for a party, turn your living room into a movie theatre, enhance your home decor with colour accents, and much more.

Set the right mood with soft white light



Hue bulbs and light fixtures use a soft white light. Dimmable from bright daylight to low nightlights, these smart lights allow you to fill your home with just the right level of warm light when you need it.

Unlock full suite of smart light features with Hue Bridge



Add a Hue Bridge (sold separately) to your smart lights to experience the full suite of Philips Hue features. With a Hue Bridge, you can add up to 50 smart lights to control throughout your home. Create routines to automate your entire smart home lighting set-up. Control your lights while away from home or add accessories such as motion sensors and smart switches.

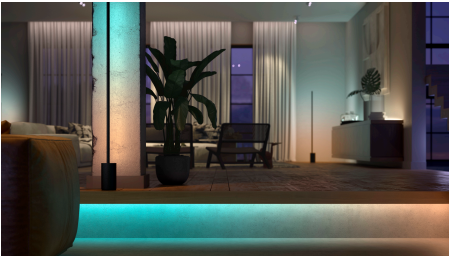
Seamlessly blend colours



Get a seamless blend of multiple colours of light at the same time in a single LED strip. The colours flow together naturally, casting light to showcase a unique effect.

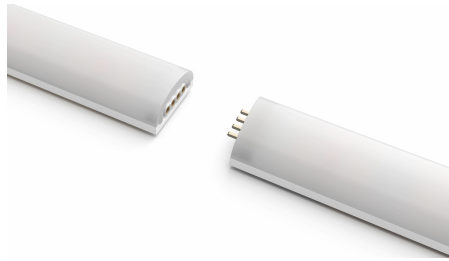
8719514339989

Shape, cut or extend



Completely flexible, the gradient lightstrip lets you shape and bend it to fit your space. Attach a gradient lightstrip extension for larger surfaces or cut the strip to size to fit into a smaller space.

Requires a Philips Hue gradient lightstrip base unit



Extend your Philips Hue gradient lightstrip up to 10 meter with 1 meter extensions. Cover larger areas with a colorful and consistent blend of light, such as full-room cove lighting or under a bed. This product can only be

used to extend the Philips Hue gradient lightstrip.

Dynamic light scenes



Amp up the ambiance of special moments with living light. Use dynamic scenes to create the perfect mood in any situation.

Specifications

Design and finishing

- Colour: white
- Material: silicone

Environmental

- Operational humidity: 5% <H<95% (non-condensing)
- Operational temperature: -20°C to 45°C

Extra feature/accessory incl.

- Colour changing (LED): Yes
- Dimmable: Yes
- Dimmable with the Hue app and switches: Yes
- LED integrated: Yes

Guarantee

- 2 years: Yes

Lightstrip

- Colour temperature: 2000-6500 K
- Cut-ability: Yes
- Extendibility: Yes
- Input Voltage: 220V-240V
- Wattage: 12.3 W

Power consumption

- Wattage: 12.3 W

Product dimensions and weight

- Height: 0.55 cm
- Length: 100 cm
- Width: 1.45 cm

Service

- Warranty: 2 year(s)

Technical specifications

- Lumen output at 4000K: 1,000 lm
- Lifetime up to: 25,000 h
- Lifetime: 25000h
- IP code: IP20
- Replaceability of light source: Replaceable LED light source by a professional
- Replaceability of control gears: Replaceable control gear by end user
- Lumen output at 2,700 K (out-of-the-box setting): 900 lm

What's supported

- Compatible with Effects feature: Yes

Packaging dimensions and weight

- EAN/UPC - product: 8719514339989
- Net weight: 0.080 kg
- Gross weight: 0.090 kg
- Height: 72.000 mm
- Length: 140.000 mm
- Width: 146.000 mm
- Material number (12NC): 929002995001



Issue date: 2023-03-27
Version: 0.290

© 2023 Signify Holding. All rights reserved. Signify does not give any representation or warranty as to the accuracy or completeness of the information included herein and shall not be liable for any action in reliance thereon. The information presented in this document is not intended as any commercial offer and does not form part of any quotation or contract, unless otherwise agreed by Signify. Philips and the Philips Shield Emblem are registered trademarks of Koninklijke Philips N.V.

www.lighting.philips.com