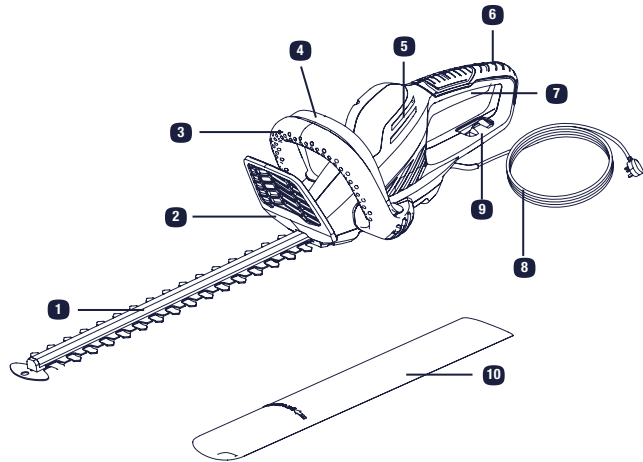


IN THE BOX

- | | |
|------------------|------------------------|
| 1 Cutting blades | 8 Power cord with plug |
| 2 Front guard | 9 Cord strain relief |
| 3 Front handle | 10 Blade sheath |
| 4 Safety switch | |
| 5 Air vent | |
| 6 Rear handle | |
| 7 On/off switch | |



PLEASE READ INSTRUCTION MANUAL FOR MORE DETAILS.



QUICK START GUIDE

450W

Electric Hedge Trimmer

HTEG48A-450

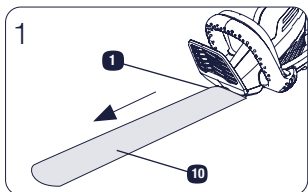


**Important - Please read these instructions
fully before starting assembly**

These instructions contain important information that will help you get the best from your trimmer, ensuring it is assembled correctly and safely. If you need help or have damaged or missing parts, call the Customer Helpline on 0345 605 2067

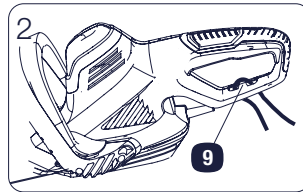
**AFTER SALES SUPPORT
0345 605 2067**

ASSEMBLE

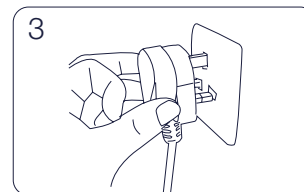


Remove the blade sheath (10) from the blade (1) of appliance carefully .

PREPARE

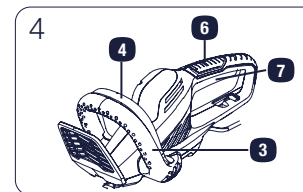


Double the cord, about a foot from the end. Lead the loop through the hole on the rear handle (9) and hook the loop over the cord strain relief (9). Gently pull on the cord to ensure that it is firmly attached.

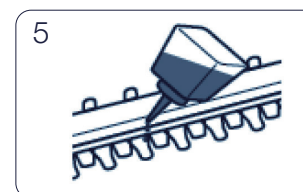


Connect the plug of the cable to the mains socket.

OPERATE



Hold the product with one hand at the rear handle (6) and with the other at the front handle (3). Press the on/off switch (7) and the safety switch (4) at the same time to switch the product on. Release either the on/off switch (7) or the safety switch (4) to switch the product off.



Important! After each use, always clean the blade, and lubricate the blade.

PLEASE READ INSTRUCTION MANUAL FOR MORE DETAILS.