

blink
an amazon company



User Guide

Simple Setup

1. Download the app.

Visit the App Store, Google Play Store

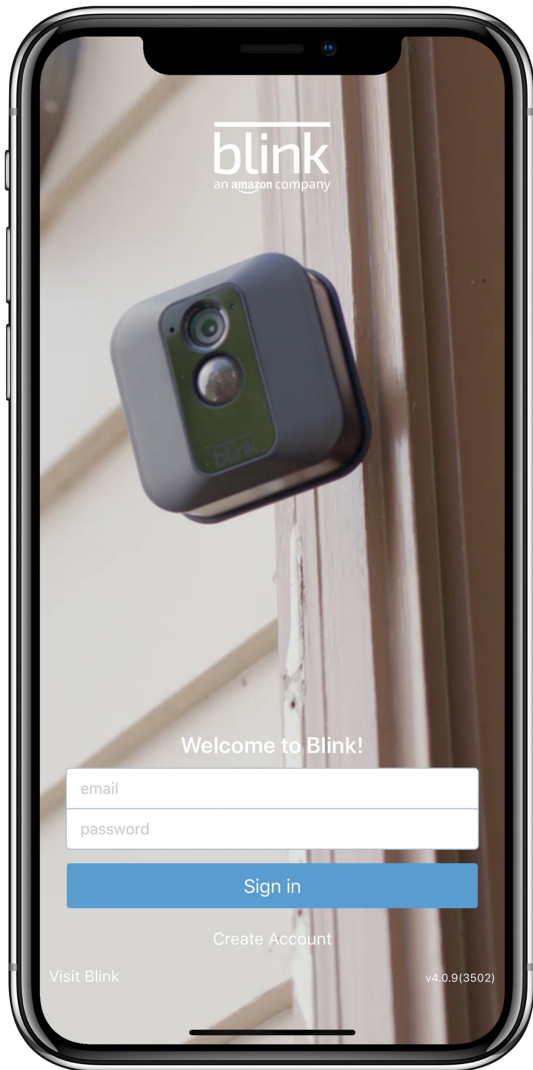
2. Launch the App.

Open the app on your iOS or Android device

3. Follow in-app instructions.

The Blink app will walk you through creating an account and setting up your new Blink system.

Detailed setup instructions can be found on page 5.



System Requirements



Blink connects to the Internet via a wireless connection.

Wi-Fi Network Requirements

In order for Blink to connect to your home Wi-Fi network, it must meet the following requirements.

- Your Wi-Fi network broadcasts at 2.4GHz (802.11 b/g/n)
- Your network does not block port 443.
- Your network upload speed is at least 2 Mbps.

iOS Requirements

To set up Blink using an iOS device, it must be running iOS 10.3 or later. The following devices support that:

- iPhone (5 or newer)
- iPad (4th gen or newer)
- iPad Mini (2nd gen or newer)
- iPod Touch (6th gen or newer)

Android Requirements

To set up Blink on an Android device, it must be running Android 5.0 (Lollipop) or later

Fire OS Requirements

To set up Blink using a Fire OS device, it must be running software version 5.1 or higher

Package Contents

Sync Module

The Sync Module is the central hub of your Blink system. This connects to your WiFi network and to your Blink cameras.

Package Includes:

Micro USB Cable and USB Wall Adapter



Blink XT2

Blink XT2 operates on 2 AA Lithium batteries and with standard use, can last up to two years before needing to be replaced.

(Alkaline or rechargeable are not recommended) and standard use is defined as 80,000 seconds of Live View and motion clips over a 2 year period

Package includes:

Blink XT2 Camera

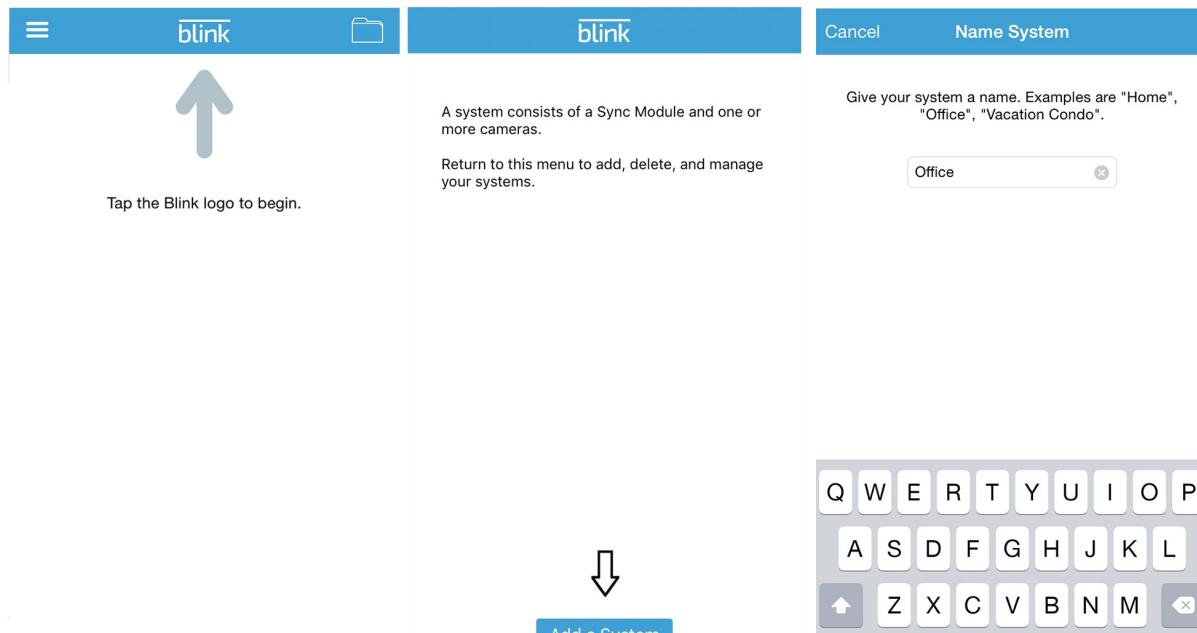
2x AA Lithium Batteries

Mounting Bracket, Riser & Screw



Setup

This is an overview of the setup process. Once you've downloaded the Blink app, create your account and follow these instructions.

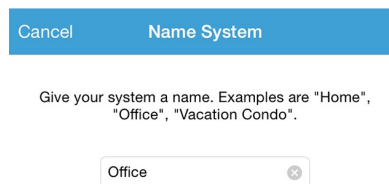


Tap the Blink logo to begin.

A system consists of a Sync Module and one or more cameras. Return to this menu to add, delete, and manage your systems.

1. Tap the Blink logo to begin.

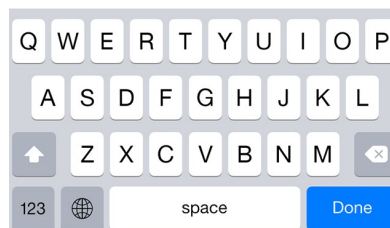
2. Tap the Add a system button.



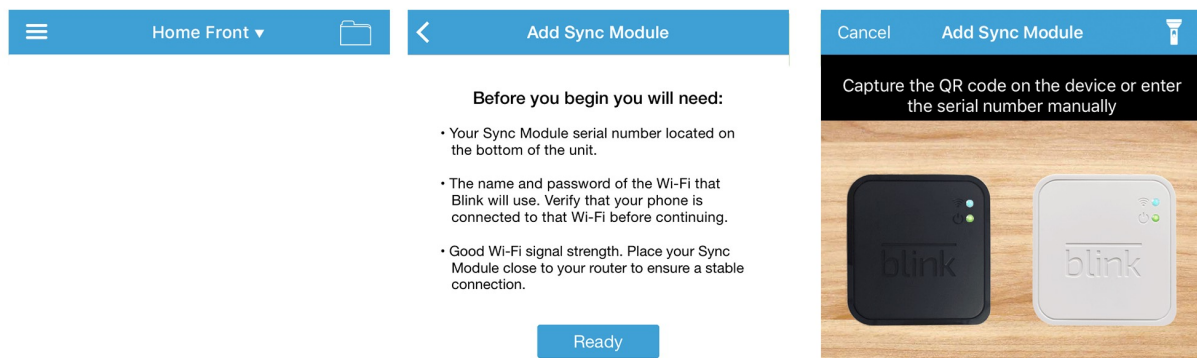
Cancel Name System

Give your system a name. Examples are "Home", "Office", "Vacation Condo".

Office



3. Set a name for the system like "Home" or "Office".



Home Front Add Sync Module

Before you begin you will need:

- Your Sync Module serial number located on the bottom of the unit.
- The name and password of the Wi-Fi that Blink will use. Verify that your phone is connected to that Wi-Fi before continuing.
- Good Wi-Fi signal strength. Place your Sync Module close to your router to ensure a stable connection.

Ready

Tap "Add Sync Module"

4. Tap add a Sync Module.

5. Read guide then tap "Ready" when you have the necessary information.



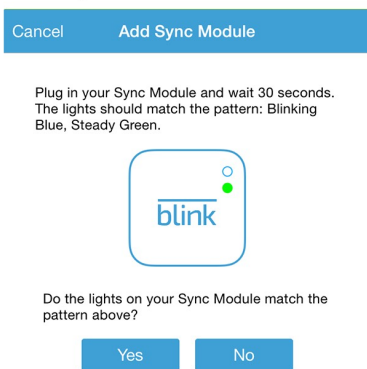
Cancel Add Sync Module

Capture the QR code on the device or enter the serial number manually

Enter Serial Manually

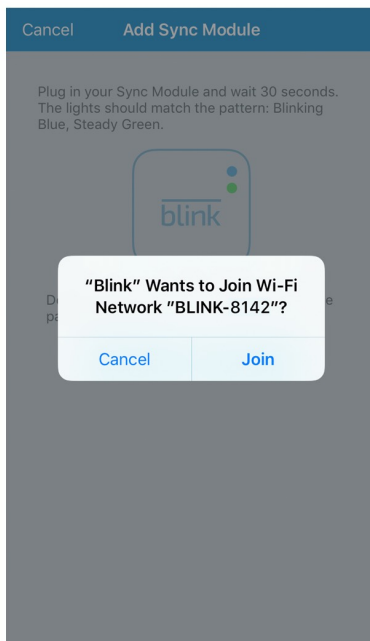
6. Enter your Sync Module's serial number located on the bottom of the unit.

Setup Cont'd.

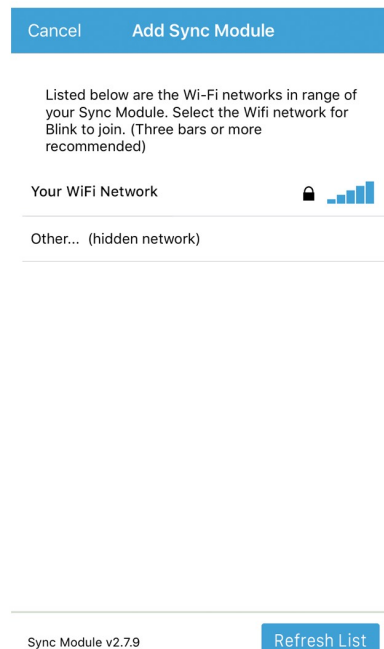


7. Plug your Sync Module into power and wait 30 seconds until you see a solid green and flashing blue light.

Add Sync Module



8. The app will prompt you to join the Blink network. Tap Join



9. Next you'll see a list of available WiFi networks. Select the network that you'd like to connect to and enter its password.

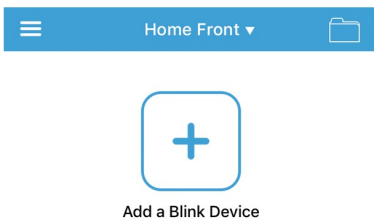
Sync Module added!



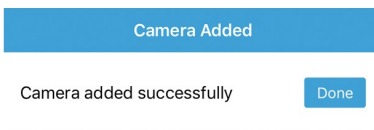
10. Shortly after that, you'll see a message saying "Sync Module Added". Your Sync Module will now display solid blue and green LEDs. Tap "Done".



Adding your Cameras



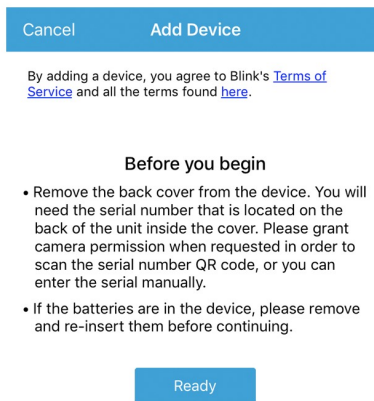
1. Tap Add a Blink Device



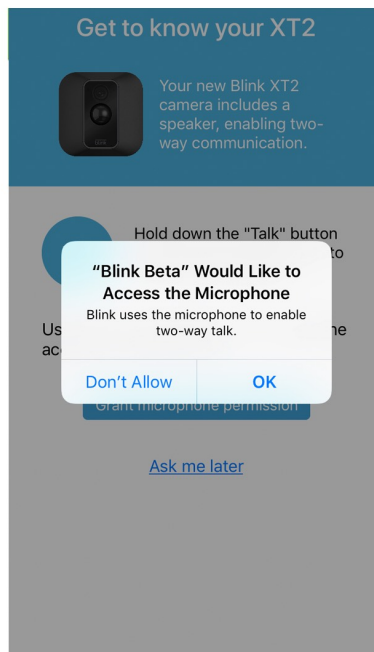
What to avoid:

- 1 Waving tree branches and shrubbery.
- 2 The sun in the sky.
- 3 Vehicles or pedestrians in the distance.
- 4 Visitors approaching directly toward the camera. Side to side movement is more easily detected than forward-back.

4. While your camera is added, the Blink app will show you some helpful tips for positioning your camera. Once it adds successfully, tap "Done".



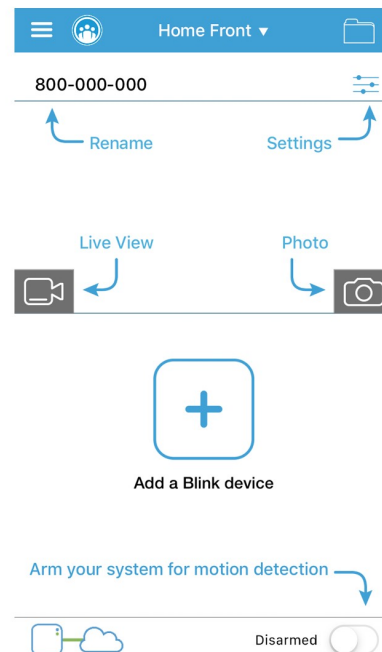
2. Read the guide, then tap Ready.



5. When adding an XT2 camera, you'll also be asked to grant the Blink app permission to use your phone's microphone. This is required in order to use 2-way audio and to talk to whoever you see on the camera.



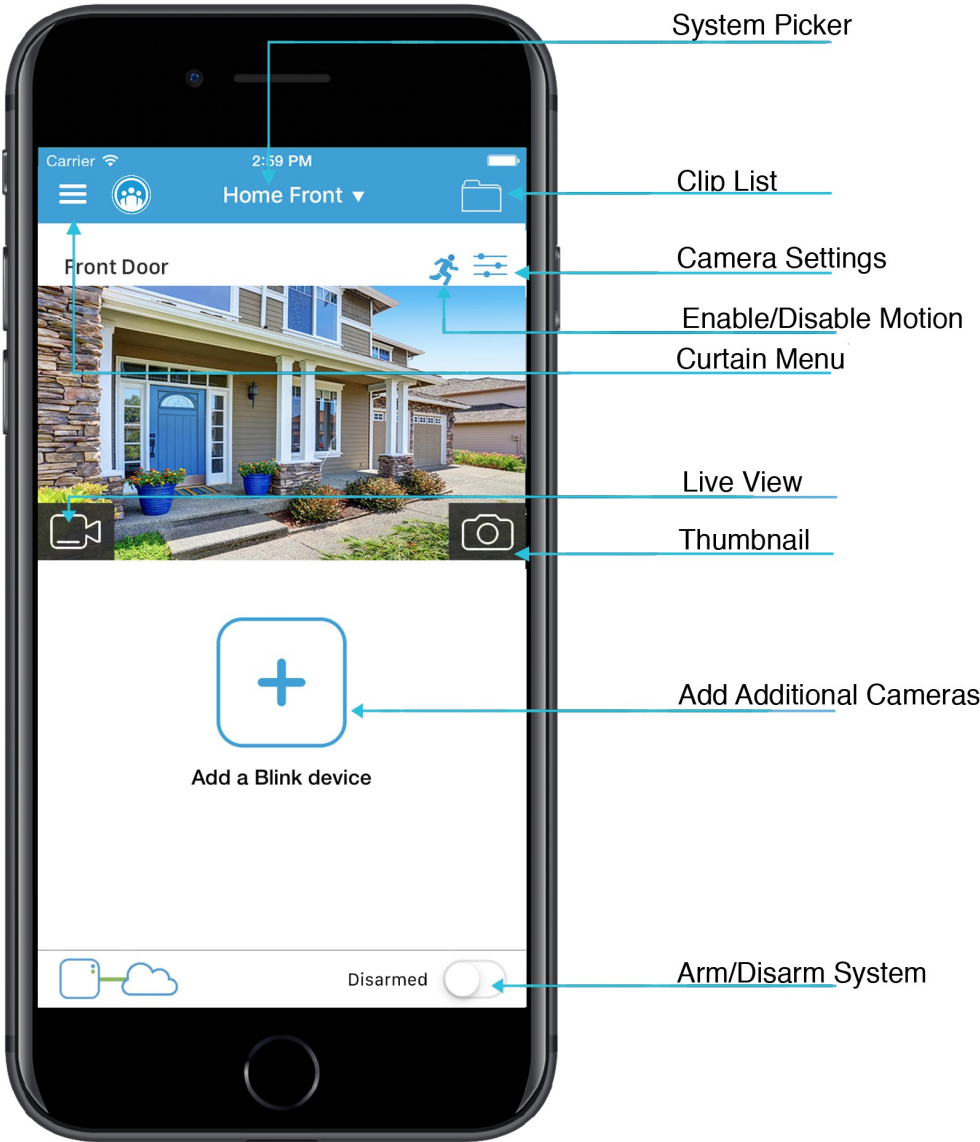
3. Scan the QR code located inside the camera's battery compartment



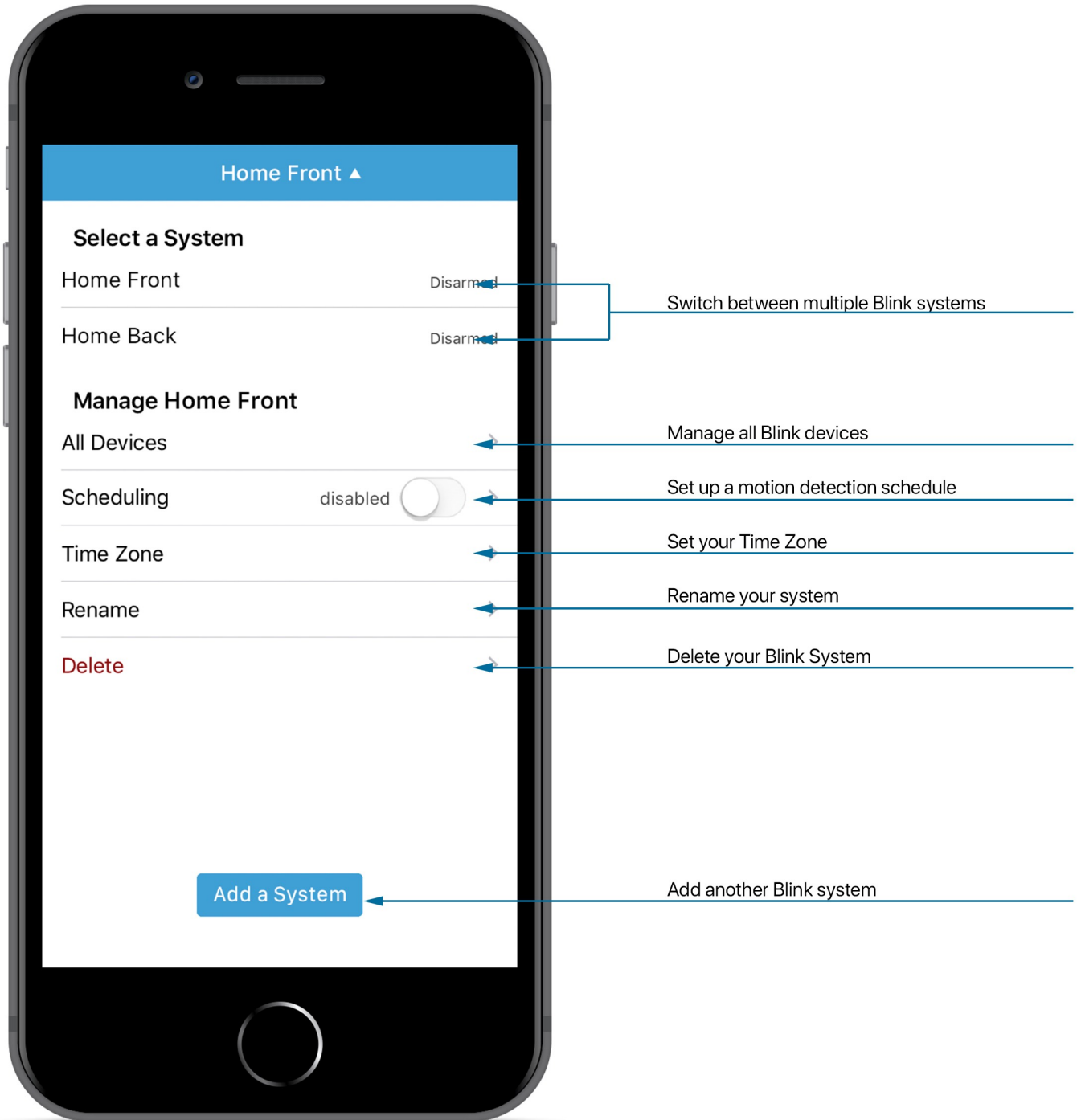
6. Now you are back at the main screen of the Blink app. You'll see some arrows pointing out things to do, like Rename your camera, start a Live View, or take a Photo.

Home Screen

The Home Screen shows you the cameras that you have on your account. From here, you can update their thumbnails, access them using Live View, and more.



System Picker



Camera Settings

Cancel Camera Settings Save

GENERAL

Name Pool x 1

MONITORING

Battery OK 2

Temperature 75°F 3

Tap Temperature to set alerts

MOTION DETECTION

Enable 4

Activity Zones New 5

Retrigger time 10 30 60 6

Sensitivity L 5 H 7

Clip Length 5 5 60 8

End clip early if motion stops 9

IR ILLUMINATOR

Control Off On Auto 10

Intensity Low Med High 11

AUDIO

Enable Microphone 12

Speaker Volume L H 13

VIDEO

Quality Saver Best Enhanced 14

STATUS

Last Updated 9/28/18, 11:57 PM Update 15

Camera to WiFi 16

Camera to Sync Module 17

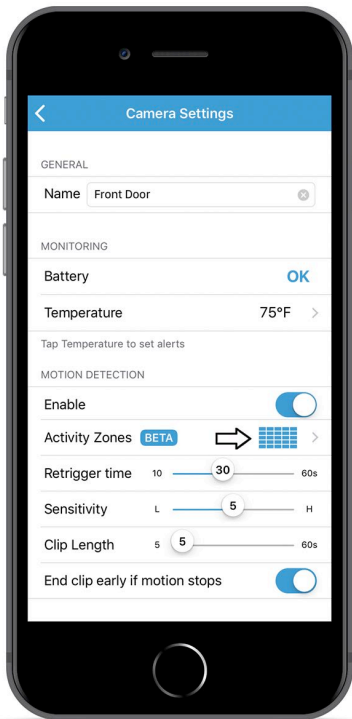
Delete Camera 18

Camera Settings

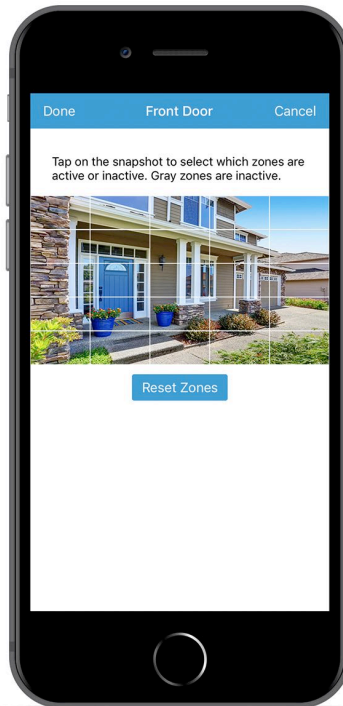
- 1. Name:** Camera's individual name
- 2. Battery:** Battery indicator
- 3. Temperature:** Current temperature
- 4. Motion Detection:** Enable or disable
- 5. Activity Zones:** Allows you to mask off certain regions to prevent excessive motion clips
- 7. Sensitivity:** Sensitivity of motion detection
- 8. Clip Length:** Duration that camera is set to record
- 9. End Early:** Ends clip if motion stops
- 10. Control:** Controls activation of IR illuminator
- 11. Intensity:** Brightness of IR illuminator
- 12. Enable Microphone:** Enable or disable camera's microphone
- 13. Speaker Volume:** XT2 only, controls the volume of the camera's speaker
- 14. Quality:** Adjusts the quality of video
- 15. Update:** Refreshes camera's readings
- 16. Camera to WiFi:** Signal strength to WiFi
- 17. Camera to Sync Module:** Signal strength to Sync Module
- 18. Delete Camera:** Removes camera from your account

Activity Zones

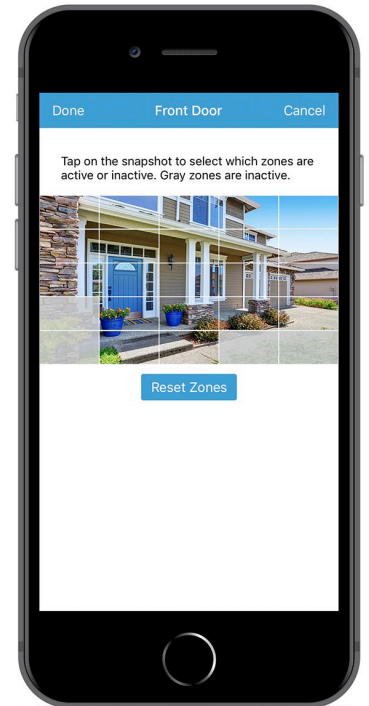
Activity Zones allow you to better control when your cameras record motion clips.



If you don't want your cameras recording motion clips when a tree or bush is blowing in the wind, you can enable Activity Zones. In your camera's settings, tap where you see Activity Zones to get started.



You'll see that camera's thumbnail with a grid layout on top of it. Tap each zone that you'd like to disable for motion detection and they will become grayed out.



Once you're happy with the zones that you've disabled, tap the done button. Your camera will no longer trigger motion events from those specific zones.

Help

At Blink, our dedicated support team is ready to assist you using your preferred method if you run into any issues.

Web: support.blinkforhome.com

Phone: (781) 332-5465

24 hours per day, 7 days per week

Thank you for choosing Blink!

