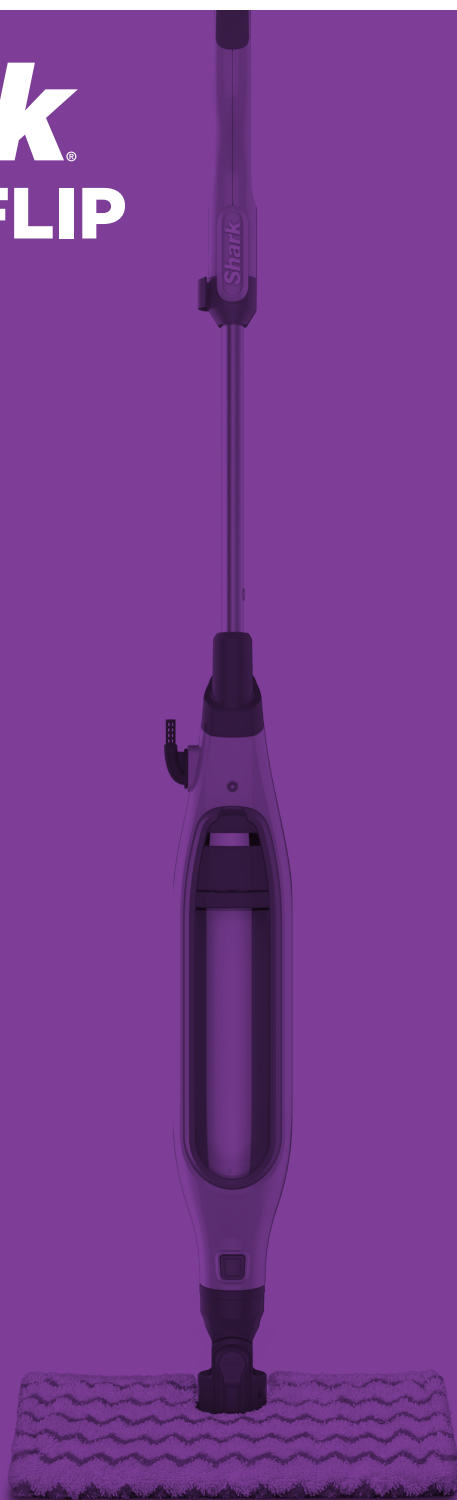


Shark **KLIK N' FLIP**

S6001UK

OWNER'S GUIDE



IMPORTANT SAFETY INSTRUCTIONS

For Household Use Only

WHEN USING YOUR SHARK® KLIK N' FLIP STEAM POCKET® MOP, BASIC SAFETY PRECAUTIONS SHOULD ALWAYS BE FOLLOWED, INCLUDING THE FOLLOWING:

READ ALL INSTRUCTIONS BEFORE USING YOUR SHARK KLIK N' FLIP STEAM POCKET MOP.

 **WARNING: DANGER OF SCALDING.**

The steam emitted from the Steam Mop is very hot and may cause scalding. Please use caution when using the Steam Mop.

 **WARNING: KEEP STEAM MOP AWAY FROM CHILDREN.**

IMPORTANT:

This appliance is not intended for use by persons (including children) with reduced physical, sensory or mental capabilities, or lack of experience and knowledge, unless they have been given supervision or instruction concerning the use of the appliance by a person responsible for their safety.

 **WARNING:** Children should be supervised to ensure that they do not play with the appliance.


 **WARNING:**
TO REDUCE THE RISK OF FIRE, ELECTRIC SHOCK OR INJURY:

1. When in use never turn the Steam Mop over on its side or direct steam toward people, pets or plants.
2. Use the system only for its intended use.
3. **DO NOT** use for space-heating purposes.
4. **DO NOT** use outdoors.
5. **DO NOT** leave the appliance unattended when plugged in. Always unplug the power cord from the electrical outlet after use and before servicing.
6. **DO NOT** allow the Steam Mop to be used by children. Close attention is necessary when used near children, pets, or plants.
7. Use only as described in this owner's guide.
8. Use only manufacturer's recommended accessories.
9. **DO NOT** use with damaged cord or plug. If Steam Mop is not working as it should or has been dropped, damaged, leaking, left outdoors, or dropped into water, return it to Euro-Pro Europe Limited for examination and repair. Incorrect reassembly or repair can cause a risk of electrical shock or injury when the Steam Mop is used.
10. To protect against a risk of electric shock, **DO NOT** immerse the Steam Mop in water or any other liquids.





11. **DO NOT** handle the plug or Steam Mop with wet hands or operate it without wearing shoes.
12. **DO NOT** pull or carry by cord, use cord as a handle, close a door on cord, or pull cord around sharp edges or corners. Do not run Steam Mop over cord. Keep cord away from heated surfaces.
13. **DO NOT** unplug by pulling on power cord. To unplug, grasp the plug not the power cord. Do not use extension cords or outlets with inadequate current-carrying capacity.
14. **DO NOT** put any objects into the steam nozzle openings. Discontinue use if the steam nozzle is blocked.
15. **DO NOT** put hands or feet under the Steam Mop. It gets very hot.
16. Use **ONLY** on flat, horizontal surfaces. **DO NOT** use on walls, counters, or windows.
17. **DO NOT** use on leather, wax-polished furniture, synthetic fabrics, velvet, or other delicate, steam-sensitive materials.
18. **DO NOT** add cleaning solutions, scented perfumes, oils, or any other chemicals to the water used in the Steam Mop as this may damage it or make it unsafe for use. If you live in a hard-water area, we recommend using distilled water in your Steam Mop.
19. **Never leave any Dirt Grip™ pad in one spot while using or storing for any period of time, as this may damage your surfaces.**
20. **The liquid or steam must not be directed towards equipment containing electrical components, such as the interior of ovens.**
21. You can release the Dirt Grip pad after you have unplugged the Steam Mop and allowed it to cool.
22. When cleaning the exterior of the Steam Mop, unplug the power cord from the electrical outlet and clean the Steam Mop with a dry or damp cloth. Do not pour water or use alcohol, benzene, or paint thinner on the Steam Mop.
23. Extreme caution should be exercised when using the Steam Mop to clean stairs.
24. Never use Steam Mop without the Dirt Grip pad attached.
25. Keep your work area well lit.
26. Store Steam Mop indoors in a cool, dry place.
27. To avoid circuit overload, do not operate another appliance on the same socket (circuit) as the Steam Mop.
28. To avoid scalding injuries, always unplug and allow the Steam Mop to cool before removing or changing mop heads, accessories, or Dirt Grip pads.

 **WARNING:** Your Steam Mop is designed to clean hard-floor surfaces that will withstand high heat. Do not use on unsealed wood or unglazed ceramic floors. On surfaces that have been treated with wax and on some no-wax floors, the sheen may be removed by the heat and steam action. It is always recommended to test an isolated area of the surface to be cleaned before proceeding. We also recommend that you check the use and care instructions from the floor manufacturer.

SAVE THESE INSTRUCTIONS





This appliance complies with the WEEE-Directive 2012/19/EU on the disposal of electrical and electronic equipment (WEEE).



This marking indicates that this product should not be disposed with other household wastes throughout the EU. To prevent possible harm to the environment or human health from uncontrolled waste disposal, recycle it responsibly to promote the sustainable reuse of material sources. To return your used device, please use the return and collection systems or contact the retailer where this product was purchased. They can take this product for environmental safe recycling.

This appliance complies with the European directives for electromagnetic compatibility (EMC) 2014/30/EU and its revisions, as well as Low Voltage Directive (LVD) 2014/35/EU and its revisions.

Thank you for purchasing the Shark® KLIK N' FLIP Steam Pocket® Mop.

This Owner's Guide is designed to help you get a complete understanding of your new KLIK N' FLIP Steam Pocket Mop. Please read it carefully and keep for future reference.

For a list of what is included with this model, refer to inside flap of box.

If you should have a question about your Shark KLIK N' FLIP Steam Pocket Mop, please call Shark Customer Service at 0800 862 0453.

The Shark KLIK N' FLIP Steam Pocket Mop is a complete solution for both deep steam cleaning and quick everyday cleaning. Whether you need to clean up tough stains with the Steam Blaster™ or need to quickly handle a spill, our next-generation KLIK N' FLIP Mop Head and Dirt Grip™ Pads work with the Steam Pocket Mop to offer the ultimate in versatility and efficiency, making cleaning simple, quick and easy.



REGISTER YOUR PURCHASE:

sharkclean.eu
0800 862 0453

RECORD THIS INFORMATION:

Model Number: _____

Date of Purchase (Keep receipt): _____

TECHNICAL SPECIFICATIONS:

Voltage: 220-240v ~50/60Hz
Watts: 1050W
Water Capacity: 350 ml (11.8 oz.)

RECOMMENDED SCHEDULE FOR REPLACING WASHABLE DIRT GRIP PADS:

Every 3 months

FOR BEST CLEANING PERFORMANCE:

See the Caring for Your Steam Pocket Mop section for more detail. Vacuum or sweep before mopping.





Contents

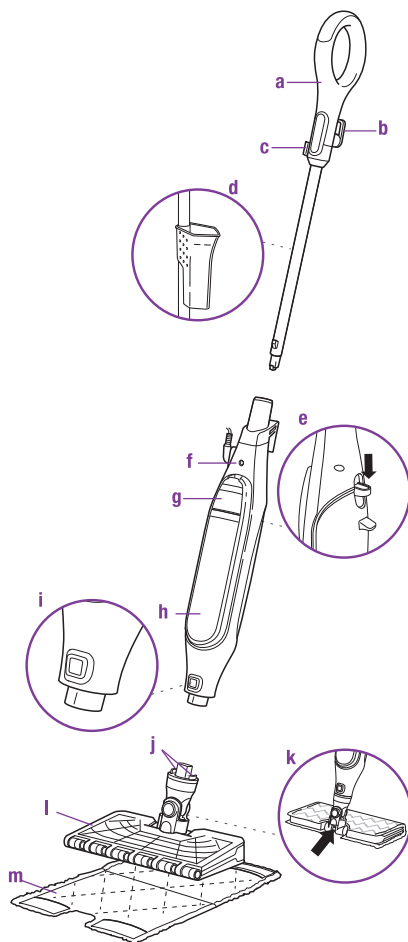
**Thank you for
purchasing the
Shark® Klik
N' Flip Steam
Pocket® Mop.**

Getting Started.....	5
Assembling Your Steam Pocket Mop.....	6
Using Your Steam Pocket Mop.....	7
Manual Steam Control.....	8
Caring For Your Steam Pocket Mop	9
Ordering Additional Accessories.....	10
Troubleshooting Guide	11
Frequently Asked Questions.....	11
Warranty.....	14



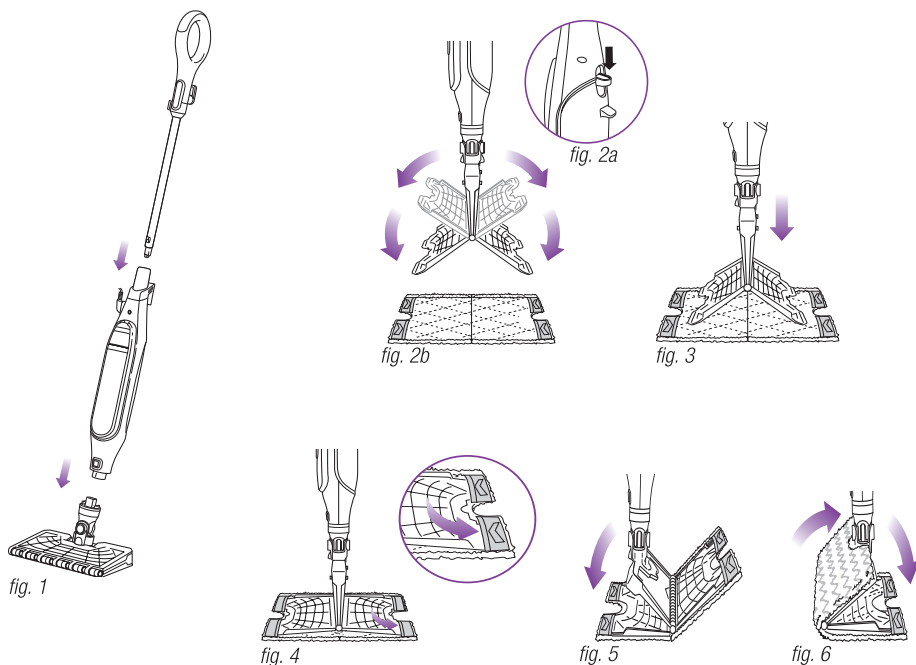
Getting Started

When assembling your Steam Mop there may be a little water in or around the water tank. This is because we test all our Steam Mops before you buy them, so you get a quality **Shark® Klik N' Flip Steam Pocket® Mop**.



- | | |
|--|------------------------------------|
| a Steam Mop Handle | h Water Tank |
| b Quick-Release Cord Holder | i Mop Head Release Button |
| c Cord Management Clip | j Secondary Release Buttons |
| d Filling Flask (clips to Steam Mop pole) | k Steam Blaster™ Nozzle |
| e Steam Mop Pad Release Button | l Klik N' Flip Mop Head |
| f Steam Mop Body | m Dirt Grip™ Pad (x2) |
| g Water Tank Lid | |

Assembling Your Steam Pocket® Mop



⚠ WARNING: Always make sure the Steam Mop is **UNPLUGGED** when not in use. **Never fill the Steam Mop or attach the mop head when the Steam Mop is plugged into an electrical outlet. Unplug from the electrical outlet and allow to cool before you fill the Steam Mop, or attach or remove the head. To prolong the life of your Steam Mop, we recommend using distilled water. Make sure you add only water to the tank. Chemicals or cleaning solutions (including vinegar) may damage the Steam Mop and could be unsafe for you and your family.**

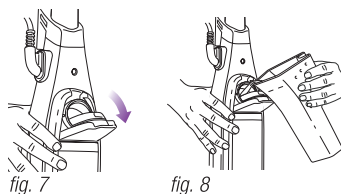
STEAM MOP ASSEMBLY

- 1** Insert the Steam Mop handle into the Steam Mop body. Push the handle in until you hear it click into place. **(fig. 1)**
- 2** Slide the Klik N' Flip Mop Head into the Steam Mop body. Push until you hear it click securely into place. **(fig. 1)** To detach the Klik N' Flip Mop Head, press the release button and slide off.

- 3** To attach the Dirt Grip™ pad, spread the pad on the floor with the pocket side up. Center the Klik N' Flip Mop Head above the pad, then press the pad release button on the back of the Steam Mop body. **(fig. 2a)** Both sides of the Klik N' Flip Mop Head will drop open. **(fig. 2b)** Slip the Klik N' Flip Mop Head's four corner tabs into the four corner pockets of the pad. **(fig. 3 and fig. 4)** Gently press one side of the Klik N' Flip Mop Head to the floor until that side clicks into place. **(fig. 5)** Repeat on the other side. **(fig. 6)**

- 4** Pull down on the water tank lid to open. **(fig. 7)**

- 5** Use the filling flask to pour water into the water tank. **(fig. 8)** Water can be poured into the tank directly. Do not overfill past the water line on the fill flask. Press the water tank lid firmly to close it.



Using Your Steam Pocket® Mop

IMPORTANT: Make sure you do not use the Steam Mop without attaching a Dirt Grip™ pad and adding water to the water tank first. When you are using the Steam Mop for the first time, it might take longer than the normal 30 seconds to start steaming.

IMPORTANT: Do not use on unsealed wood or unglazed ceramic floors. On surfaces that have been treated with wax and on some no-wax floors, the sheen may be removed by the heat and steam action. Test an isolated area of the surface to be cleaned before proceeding. Check the use and care instructions from the floor manufacturer.

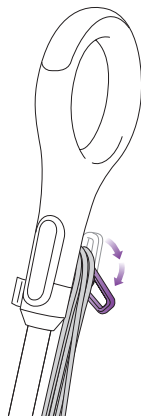


fig. 9

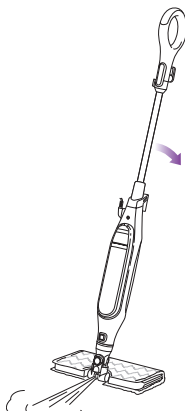


fig. 10

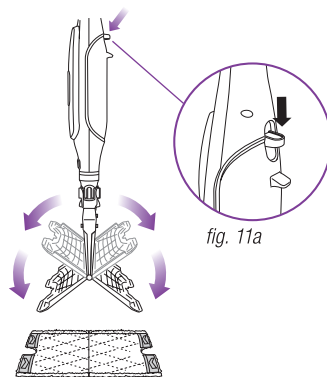


fig. 11b

NOTE: To prolong the life of your Steam Mop, we recommend using distilled water.

NOTE: Sweep or vacuum your floors prior to cleaning with your Steam Mop.

- 1 Twist the Quick-Release Cord Holder to unwrap the power cord completely. (**fig. 9**) Plug into an electrical outlet. The blue light will illuminate. It takes approximately 30 seconds for the Steam Mop to heat up.
- 2 Pump the handle a few times, pushing the handle toward the mop head in a downward, fast pumping motion. This pumping action will release steam as you mop with a forward or backward motion. Customize the amount of steam by mopping slowly for less steam and quickly for more steam.
- 3 Begin mopping with a forward and backward motion. The natural motion of mopping will produce steam.
- 4 When you need an extra burst of steam to clean a stuck-on stain, you can use the Steam Blaster™ feature. Flip the head over so that it is behind the mop body, then tilt the mop handle down. This will cause the the Steam Blaster (**fig. 10**) to emit a concentrated blast of steam onto the stain.

⚠ CAUTION: While in Steam Blaster mode, do not leave stationary for more than one minute.

⚠ CAUTION: Do not scrub any one area for an extended period of time.

- 5 To stop the Steam Blaster spray, simply raise the handle. You can then flip the mop head back into its original position and continue cleaning.
- 6 To remove the Dirt Grip pad, simply lift the Steam Mop straight up by the handle until the Klik N' Flip Mop Head is hanging straight down. Press the Release button on the back of the Steam Mop body (**fig 11a**), and both sides of the head will drop open, releasing the pad. (**fig 11b**)
- 7 Once the Dirt Grip pad has been released, close the Klik N' Flip Mop Head. To close, gently press one side of the Klik N' Flip Mop Head to the floor until that side clicks into place. Repeat on the other side.
- 8 When the water tank is empty, the Steam Mop will stop producing steam. You can refill the water tank at any time as long as the Steam Mop is unplugged. Follow the water tank filling instructions on page 6.

NOTE: Please wait 2 to 3 minutes for the Steam Mop to cool off before switching the mop head. Never leave the Steam Mop with a damp/wet Dirt Grip pad on any floor for an extended period of time.

Manual Steam Control

SETTING	IDEAL FOR THESE SEALED SURFACES	RECOMMENDED USAGE
MANUAL	Laminate Hardwood Marble Tile Stone	Cleaning sealed surfaces and large areas Basic, everyday cleaning Removing spots and smaller messes Cleaning moderate and heavy traffic areas
Steam Blaster™	For an extra burst of steam, you can use the Steam Blaster. Follow the instructions found on the "Using your Steam Pocket® Mop" page.	

TO SANITIZE* WITH THE STEAM MOP USING THE KLIK N' FLIP MOP HEAD AND THE DIRT GRIP™ PAD:

- 1 Attach a clean Dirt Grip pad to the Klik N' Flip Mop Head.
- 2 Plug into an electrical outlet. The blue light will illuminate. It takes approximately 30 seconds for the mop to heat up and the steam to be ready.
- 3 Pump the handle a few times in a downward motion. This pumping action will release steam as you Steam Mop, and allows you to customize the amount of steam you want.
- 4 Start mopping on an appropriate sealed hard-floor surface with a forward and backward motion. After three minutes, your unit is ready to be used to sanitize.
- 5 Using a forward and backward motion, move the unit over the area you seek to sanitize. Slowly repeat at least 3 times.

* Sanitization studies were conducted under controlled test conditions. Household conditions and results may vary. Klik N' Flip Mop Head only when used with Steam Mop. Not in Steam Blaster™ mode.

Caring for Your Steam Pocket® Mop

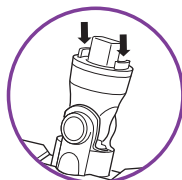


fig. 12



fig. 13

AFTER USE AND STORAGE

- 1 Unplug the cord from the outlet and place the Steam Mop into the upright position. Let it cool.
- 2 To remove the Dirt Grip™ pad, lift the Steam Mop straight up by the handle until the Klik N' Flip Mop Head is hanging straight down. Press the Release button on the back of the Steam Mop body, and both sides of the Klik N' Flip Mop Head will drop open, releasing the pad. Once the pad has been released, close the Klik N' Flip Mop Head.
- 3 If the Klik N' Flip Mop Head is not attached to the Steam Mop, the pad can still be removed. Press the two red secondary pad release buttons located on the sides of the Klik N' Flip Mop Head post to release the pad. (fig. 12)
- 4 Empty the water tank before storing. To empty the tank, hold the Steam Mop beside a sink. Open the water tank lid, then lean the unit over the sink. Let the water drain out, then close the lid.
- 5 To store the Steam Mop, wait until after it has cooled and the steam has been released. Then remove the Klik N' Flip Mop Head and hang the Steam Mop by its handle on a large hook (not included). (fig. 13)
- 6 Store the filling flask by attaching it to the top handle pole of the Steam Mop.

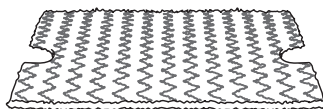


fig. 14

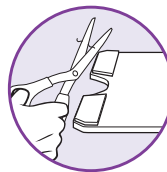


fig. 15

DIRT GRIP PAD CARE INSTRUCTIONS

Care

Machine-wash the Dirt Grip pads separately with warm water using liquid detergent.

NEVER USE BLEACH, POWDERED DETERGENT, OR FABRIC SOFTENERS as they may damage or leave a coating on the Dirt Grip pads that will reduce their cleaning performance and absorbency. Dirt Grip pads should be line-dried or tumble-dried on a low setting, as this will extend the life of the microfiber fabric. (fig. 14)

Loose fibers can indicate wearing of the microfiber fabric. Do not pull the loose fibers, as this can cause the weave to come undone. Simply trim the loose fibers with scissors. (fig. 15)

Replacement Dirt Grip pads


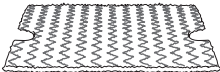



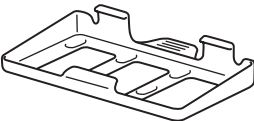
For best cleaning results, we recommend replacing your Dirt Grip pads every 3 to 4 months following normal use. As with any fabric, dirt particles, grease, friction, and repeated washing can cause the fibers to break down, and you may notice an increase in the effort needed to push or pull the Steam Mop.

You can purchase replacement Dirt Grip pads and other accessories by visiting sharkclean.eu or calling 0800 862 0453.

STEAM NOZZLE CARE

If you believe the main steam nozzle or the Steam Blaster™ nozzle is clogged, please contact Customer Service at 0800 862 0453 or www.sharkclean.eu/uk.

Ordering Additional Accessories

ACCESSORY	
<p>Klik N' Flip Mop Head</p> <p>Great for all-purpose cleaning. Get an extra boost for tough stains from the Steam Blaster™, and cut your cleaning time in half with the hands-free two-sided pad.</p>	
<p>Dirt Grip™ Pad</p> <p>Double-sided pad. Easy, hands-free installation and removal. Washable and reusable.</p>	
<p>Triangle Scrubber Head</p> <p>Triangle shape is perfect for cleaning corners and hard-to-reach areas. Equipped with a Steam Blaster to help loosen stains and a deployable scrubber to tackle stuck-on spots.</p>	
<p>Triangle Scrubber Pad</p> <p>Ideal for cleaning corners and other hard-to-reach spaces. Easy to install and remove.</p>	
<p>Filling Flask</p> <p>Filling line makes it simple and convenient to fill the water tank. Flask attaches to the handle for easy storage.</p>	
<p>Carpet Gider</p> <p>Use to groom and freshen carpeting or area rugs.</p>	

Troubleshooting Guide

PROBLEM	POSSIBLE REASONS & SOLUTIONS
The Steam Mop isn't producing any steam.	<p>The Steam Mop should be securely plugged into an electrical outlet. Check your fuse or circuit breaker or try a different outlet.</p> <p>Make sure the water tank is full, the unit is plugged in, and the blue light is illuminated steadily.</p> <p>If the blue light is not illuminated, try a different electrical outlet.</p> <p>Pump the handle a few times to activate steam.</p> <p>If after following the above steps the Steam Mop still does not produce any steam, contact Customer Service at 0800 862 0453 or www.sharkclean.eu/uk.</p>
The Steam Mop is producing intermittent steam.	<p>Make sure the water tank is full.</p>
I am getting streaky/cloudy floors.	<p>The Dirt Grip™ pad might be dirty. If it is, flip it over to the clean side or change it entirely. If you washed the Dirt Grip pad with powdered detergent, then it could be damaged and require replacement.</p> <p>This could also be an indication of soap or grease residue that has accumulated on the floor. As the Steam Mop uses only a small amount of water, it may not be enough to rinse off the accumulation of residue that the steam is bringing to the surface. We suggest rinsing the floor with nothing but water, letting it dry, and then steam mopping again with a clean Dirt Grip pad. One or more rinses will generally remove the residue.</p> <p>A more stubborn case may require you to rinse the floor with a mix of one part vinegar and two parts water* (but DO NOT put any cleaning solutions or chemicals into the Steam Mop's water tank.)</p> <p>*Please consult your flooring manufacturer's care and maintenance instructions before applying any cleaning products or solutions.</p>
It's really hard for me to push/pull the Steam Mop.	<p>The Steam Mop might be hard to push/pull if the Dirt Grip pad isn't wet enough. It should get easier to push/pull the Steam Mop after it's been running for a few minutes.</p> <p>An overly dirty pad could also result in a harder push/pull experience. We recommend flipping the pad over or using a clean pad.</p>

Frequently Asked Questions

QUESTION	ANSWER
Can I use the Steam Mop on carpets?	No, the Steam Mop is not designed for carpet cleaning.
What surfaces can I use the Steam Mop on?	<p>The Steam Mop is designed for use on all sealed hard-floor surfaces. We recommend that you first test an isolated area of the floor surface to be cleaned as well as review the use and care instructions from your floor manufacturer.</p> <p>⚠ WARNING: Do not use on leather, wax-polished furniture, synthetic fabrics, velvet, or other delicate, steam-sensitive materials.</p> <p>NOTE: On surfaces treated with wax and on some no-wax floors, the sheen may be removed by the heat or steam action of the unit. Test an isolated area of flooring first to see if sheen is affected.</p>
Can I put something other than water in the water tank of the Steam Mop?	DO NOT add cleaning solutions, scented perfumes, oils, or any other chemicals to the water used in this appliance, as this may damage the unit or make it unsafe for use. We recommend using distilled water in your Steam Mop.



[illegible]



Notes

Lined area for notes, consisting of multiple horizontal lines.





Warranty Terms and Conditions

When a consumer buys a product in the UK, they get the benefit of legal rights relating to the quality of the product (your “statutory rights”). You can enforce these rights against your retailer. However, at Shark we are so confident about the quality of our products that we give you an additional manufacturer’s warranty of up to two years upon registration with Shark. Offer valid only in United Kingdom and Republic of Ireland. These terms and conditions relate to our manufacturer’s warranty only – your statutory rights are unaffected.

The conditions below describe the prerequisites and scope of our warranty. They do not affect your statutory rights or the obligations of your retailer and your contract with them.

Shark® Guarantees

A household appliance like a steam mop constitutes a sizeable investment. Your new machine needs to work properly for as long as possible. The guarantee it comes with is an important consideration – and reflects how much confidence the manufacturer has in its product and manufacturing quality.

Every Shark® machine comes with a free parts and labour guarantee. Our customer service helpline (0800 862 0453) is open from 9.00am to 6.00pm Monday – Friday. It’s free to call, and you’ll be put straight through to a Shark representative. You’ll also find online support at www.sharkclean.eu/uk.

How do I register my extended Shark® guarantee?

You can register your guarantee online within 28 days of purchase. To save time, you’ll need the following information about your machine:

- Serial number (on the machine rating label)
- Date you purchased the machine (receipt or delivery note)
- To register online, please visit www.sharkclean.eu/uk/register-guarantee

IMPORTANT

- Both the 12 months and the extended 1 year guarantee will only cover your product from the date of purchase.
- Please keep your receipt at all times. Should you need to use your extended guarantee we will need your receipt to verify the information you have supplied to us is correct. The inability to produce a valid receipt may invalidate your guarantee.

What are the benefits of registering my free Shark® guarantee?

When you register your guarantee we’ll have your details to hand if we ever need to get in touch. You can also receive tips and advice on how to get the best out of your Shark® steam mop and hear the latest news about new Shark® technology and launches.

If you register your guarantee online, you’ll get instant confirmation that we’ve received your details.

How long are new Shark® machines guaranteed for?

Our confidence in our design and quality control means that your new Shark® steam mop is guaranteed for a total of two years. (12 months plus an extended warranty of 1 year).

What is covered by the free Shark® guarantee?

Repair or replacement of your Shark® machine (at Shark®’s discretion), including all parts and labour. A Shark® guarantee is in addition to your legal rights as a consumer.

What is not covered by the free Shark® guarantee?

- Blockages – For details of how to unblock your steam mop, please refer to the Operating Manual.
- Normal wear and tear.
- Accidental damage, faults caused by negligent use or care, misuse, neglect, careless operation or handling of the steam mop which is not in accordance with the Shark® Operating Manual supplied with your machine.
- Use of the steam mop for anything other than normal domestic household purposes.
- Use of parts not assembled or installed in accordance with the operating instructions.
- Use of parts and accessories which are not Shark® Genuine Components.
- Faulty installation (except where installed by Shark®).
- Repairs or alterations carried out by parties other than Shark or its agents.

What happens when my guarantee runs out?

Shark® does not design products to last for a limited time. We do appreciate that there may be a desire for our customers to want to repair their steam mops after the warranty has elapsed. In this case please contact our free phone customer service help line and ask about our out warranty program, on 0800 862 0453.

Where can I buy genuine Shark® spares and accessories?

Shark® spares and accessories are developed by the same engineers who developed your Shark® steam mop. You’ll find a full range of Shark® spares and replacement parts for all Shark® machines at www.sharkclean.eu/uk/parts. Accessories are at www.sharkclean.eu/uk/accessories.

Please remember that using non-Shark® spares invalidates your guarantee.



Euro-Pro Europe Limited
15 Mariner Court
Calder Park
Wakefield
WF4 3FL
Freephone 0800 862 0453
www.sharkclean.eu

Shark and Steam Pocket are registered trademarks of
Euro-Pro Europe Limited.

Dirt Grip, Spray Pocket and Steam Blaster are
trademarks of Euro-Pro Europe Limited.

Copyright © Euro-Pro Europe Limited 2016

Illustrations may differ from actual product. We are
constantly striving to improve our products, therefore the
specifications contained herein are subject to change
without notice.

PRINTED IN CHINA

S6001UK_40_IB_161104_2

