

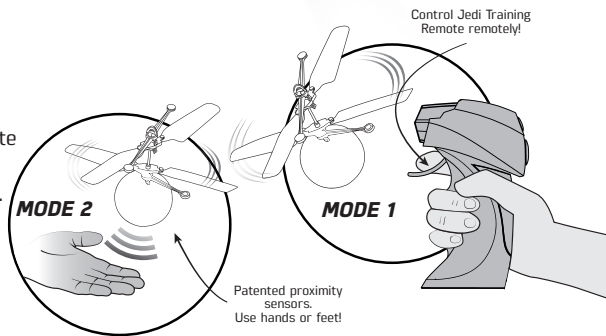
STAR WARS™

JEDI™ TRAINING REMOTE INSTRUCTION MANUAL

Gameplay

The Jedi Training Remote (JTR) has 2 modes:

- **Mode 1 - RC.** Squeeze the trigger of the handset to control the Jedi Training Remote's height and speed. Press the button at the rear of the handset to activate sting beams.
- **Mode 2 - Force Control.** Patented Proximity Sensors. Press the FORCE CONTROL button on the handset to activate Auto-Hover and Object detection system. Sensors in the Jedi Training Remote will now detect any solid objects below, including hands and feet, and will fly up and away while firing simulated sting beams!
Press the FORCE CONTROL Button again to stop.



Please Note: If the JTR Heliball crashes it automatically turns itself off. To resume flying turn the Heliball back on.

Important

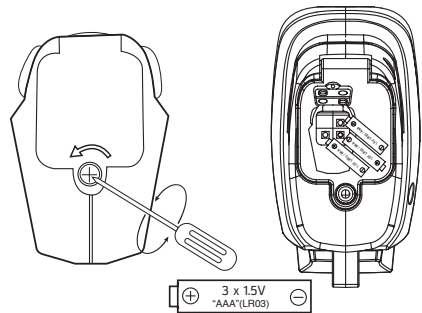
Indoor use only.

Before use, please ensure an adult has installed the batteries, into the remote control, correctly using the instructions shown in this instruction manual. Please retain this information for future reference.

Battery Installation

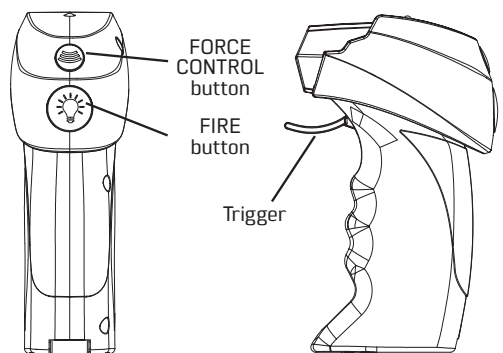
Uses: 3 x 1.5V AAA alkaline batteries
(not included)

Use a small screwdriver (not included) to remove the battery compartment cover. Install the batteries, making sure the polarity (+ and -) is matched with the symbols on the remote control handset. Replace battery compartment lid and secure.



Charging - (Charge before use.)

The Jedi Training Remote charges via the USB cable. The internal LED light will turn on to indicate charging and will turn off when fully charged. Make sure the Jedi Training Remote is off while charging.
Note: Charge time of 30 minutes will provide flying time of approximately 5 minutes.



Jedi Training Remote ON/OFF function

Press the ON/OFF button.

2 orange lights will flash and the JTR is now on standby ready for flying.

Remote Controller ON/OFF function

Install 3x AAA battery

Press the FIRE button, a red light will flash slowly.

Pull the trigger back and release. The red light will now stay lit, signifying the handset is now paired and ready to fly the Jedi Training remote.

To turn off the JTR

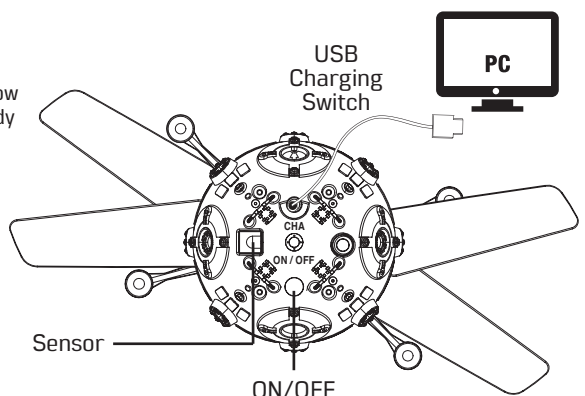
Press the ON/OFF button again to switch off.

To turn off the controller

Press the FIRE button for 3 seconds.

Sleep mode function

Hold the FIRE button on the remote controller for 3 seconds to enter sleep mode. The JTR will also enter sleep mode if there is no action from the remote controller or the JTR after 10 minutes.



Troubleshooting

Problem	Cause	Correction
Propeller won't move	<ul style="list-style-type: none"> • On/Off switch is OFF • Weak Battery 	<ul style="list-style-type: none"> • Set switch to ON • Re-charge the JTR
Suddenly stops & drops when flying	<ul style="list-style-type: none"> • Weak power 	<ul style="list-style-type: none"> • Re-charge the JTR
Loss of control	<ul style="list-style-type: none"> • Affected by strong lighting 	<ul style="list-style-type: none"> • Change to another environment to avoid direct lighting
JTR hits hand before moving away	<ul style="list-style-type: none"> • Weak power 	<ul style="list-style-type: none"> • Re-charge the JTR
JTR does not move up in a straight line	<ul style="list-style-type: none"> • Air turbulence in room 	<ul style="list-style-type: none"> • Turn off air conditioning or shut window/door

Disposal of Li-poly battery instructions

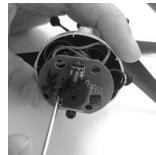
(Only follow these instructions if you wish to dispose of your Jedi Training Remote)



1. Using a Phillips screwdriver, unscrew the four screws on the side of the Jedi Training Remote.



2. Remove the casing.



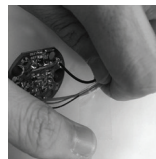
3. Remove the PCB.



4. Remove the inner components.



5. Carefully cut the wire connecting the Li-poly battery to the Jedi Training Remote on one side.



6. Remove the internal component from the casing and carefully cut the second connecting wire. Use tape to cover the end of each wire from the battery to prevent short circuit.

WARNING:

Batteries should only be removed by an adult. Children should not be allowed to carry out this procedure.

Battery Information:

- Non-rechargeable batteries are not to be recharged
- Rechargeable batteries are only to be charged under adult supervision
- Rechargeable batteries are to be removed from the toy before being charged
- Do not mix old and new batteries
- Do not mix alkaline, standard (Carbon-zinc) or rechargeable batteries
- Batteries are to be inserted with the correct polarity
- Exhausted batteries are to be removed from the toy
- The supply terminals are not to be short-circuited
- Contains Li-poly battery, battery must be recycled or disposed of properly


Always:

- Make sure battery compartments are secure.
- Use batteries of the correct size and type.
- Fit batteries correctly observing the plus and minus marks on the battery and compartment.
- Replace a whole set of batteries at one time.
- Remove dead batteries from equipment.
- Remove batteries from appliance that will not be used again for a long time.
- Remember that all batteries should be kept away from young children as they could be easily swallowed. Seek medical advice if you believe a cell has been swallowed.
- Ensure that batteries are installed by an adult prior to use.

Never:

- Dispose of batteries in a fire.

Consumers have a significant role to play in reducing the impact of waste electrical and electronic equipment on the environment, you can help by re-using or recycling such equipment.

The toy is only to be connected to Class II equipment bearing the symbol 



The crossed out wheeled-bin symbol indicates that the product & batteries must not be disposed of in domestic waste as they contain substances which can be damaging to the environment and human health. If you cannot re-use or recycle the product or batteries, please use designated collection points, or appropriate recycling facilities to dispose of them. The toy is only to be connected to Class II equipment bearing the symbol

! WARNING: CE

Not suitable for children under 3 years due to small parts which may present a choking hazard. Not suitable for children under 8 years. Please retain this information for future reference. Adult supervision required. Please read through this instructions manual with your child before starting to use the Jedi Training Remote. Flying the Jedi Training Remote requires skill and children must be trained under adult supervision. Never put hands, hair, face or loose clothing close to rotating propeller. Do not use in confined spaces. This toy is intended to be used indoor only. The room must be free from obstacles (such as lamps, loose objects etc). Do not use in an air-conditioned room. Never disassemble or attempt to modify the product. Always switch off both the Jedi Training Remote and handset when leaving the handset unattended. Never allow young children to use this product. Do not operate the Jedi Training Remote in direct sun or strong lighting, as it will affect the control of your Jedi Training Remote. Do not cover the lens of the handset as no signal will be transmitted. Risk of eye injury. Do not fly near your face to avoid injuries. Do not throw or hold any objects in the rotating rotor. For safe use, the room where the toy is used must be sufficiently large.

CAUTION: The Jedi Training Remote should not be started when people, animals or any objects are within the flying range. Hands, hair and clothes should be kept away from the propeller (rotor).



Helibal® is a Registered Trademark

starwars.com

© & ™ Lucasfilm Ltd.



Distributed by: China Industries Ltd. T/A Wow! Stuff, Creative Industries Centre, Wolverhampton Science Park, Wolverhampton, WV10 9TG.

www.wowstuff.com

Made in China