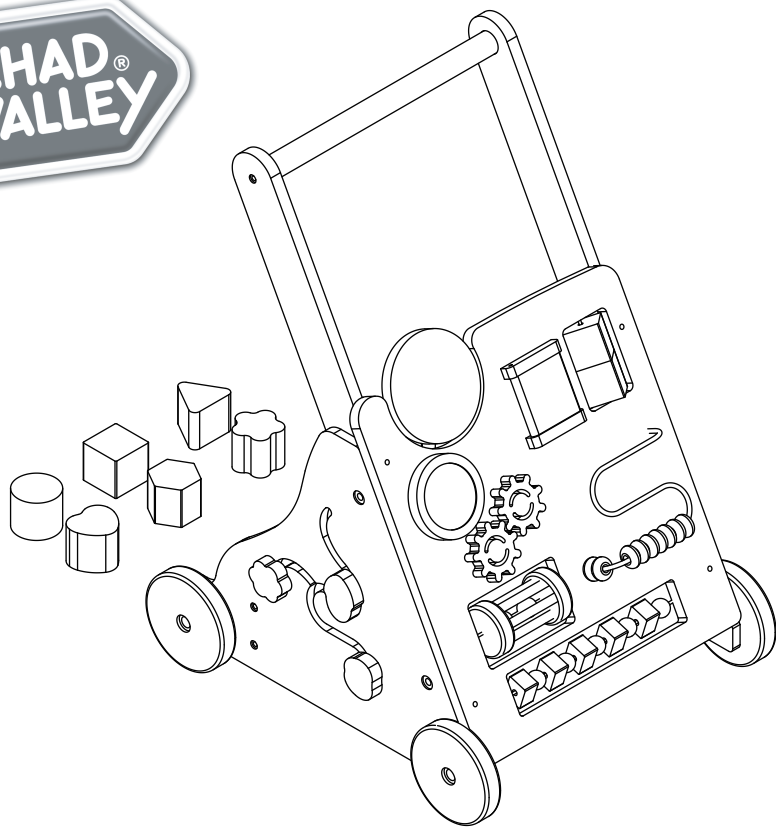


CV Wooden Activity walker

Assembly & User Instructions - Please keep for future reference 6899253



Important
Age: 12 Months+

Important – Please read these instructions fully before assembly or use

These instructions contain important information which will help you get the best from your product and ensure safe and correct assembly, use and maintenance.



22/08/25 Format

Safety Information

Important – Please read these instructions fully before assembly or use

General safety

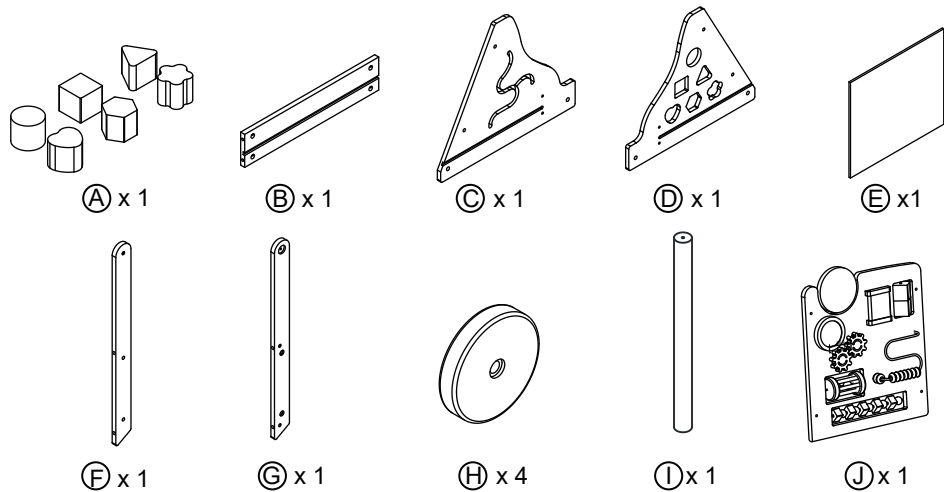
- Adult assembly required.
- For use by one child only at a time.
- Suitable for indoor use.
- To avoid injury ensure that children are kept away during unpacking and assembly of this product due to small parts.

WARNING







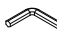
- Never leave the child unattended. Parental supervision required at all times.
- Prevent access to stairs, steps and uneven surfaces.
- Prevent collision with glass in doors, windows and furniture.
- Do not use this toy if any part is broken or missing.
- Be aware of the risk of open fire and other sources of strong heat in the vicinity of the product.
- Young children in play are unaware of potential hazards and dangers, therefore responsible adult supervision is essential.

Parts

Please check you have all the parts and fittings listed below

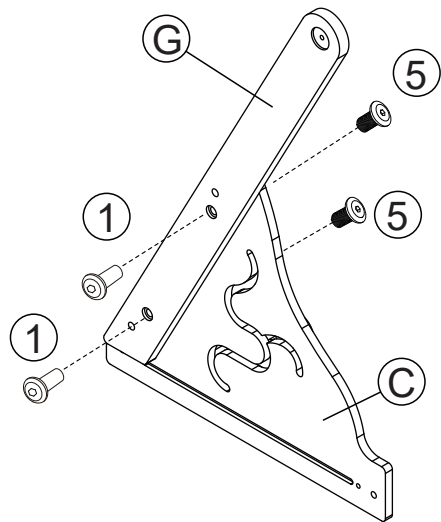


Note: The quantities below are the correct amount to complete the assembly. In some cases more fittings may be supplied than are required.

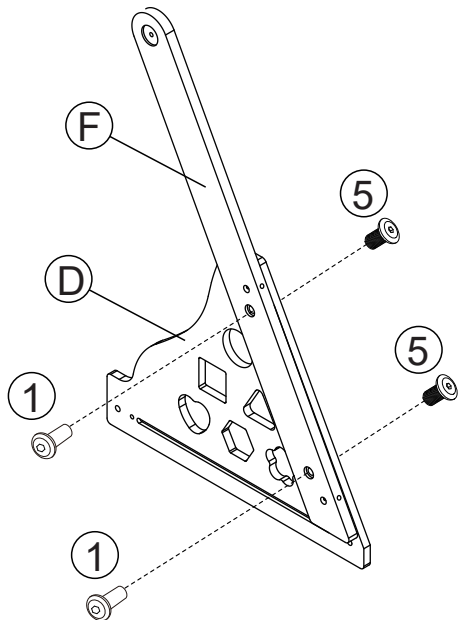
①		M6x8	x8
②		M4x20	x2
③		M4x40	x8
④		Φ13.8xΦ10x15	x4
⑤		M6x12	x4
⑥		M6x20	x4
⑦			x2

Assembly Instructions

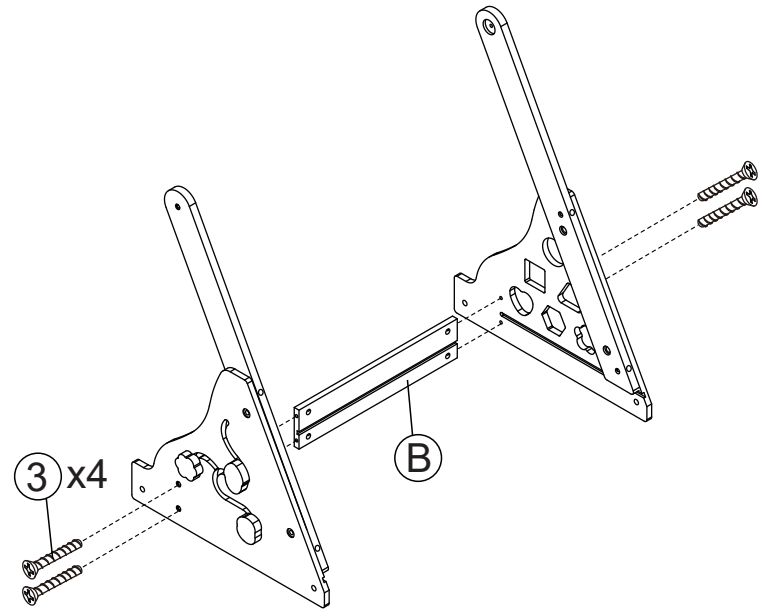
step 1:



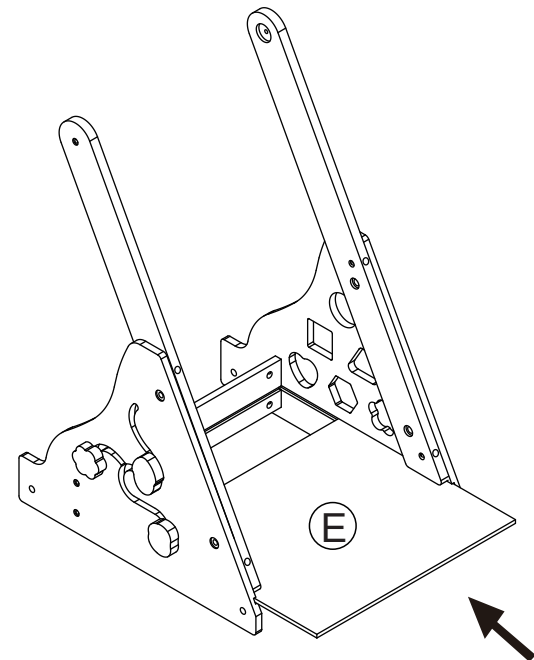
step 2:



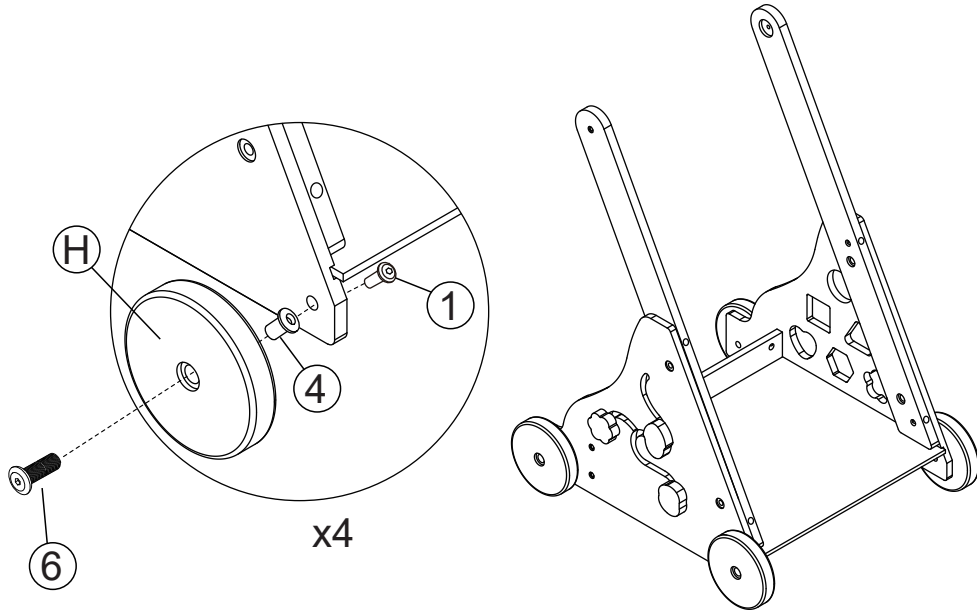
step 3:



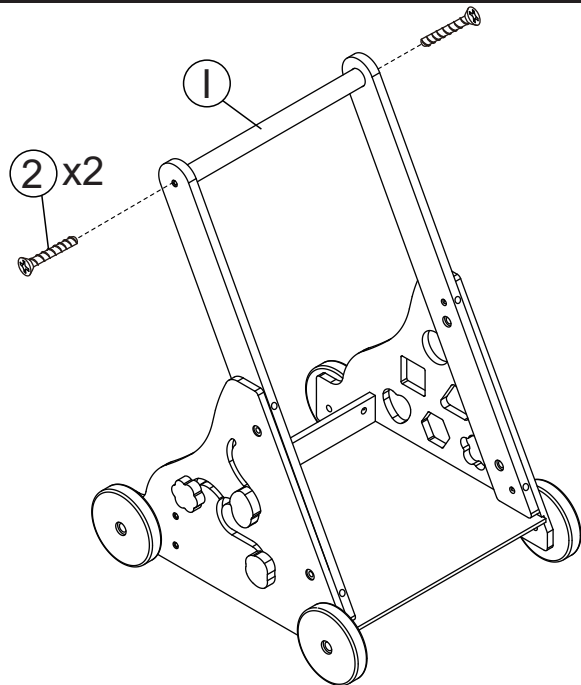
step 4:



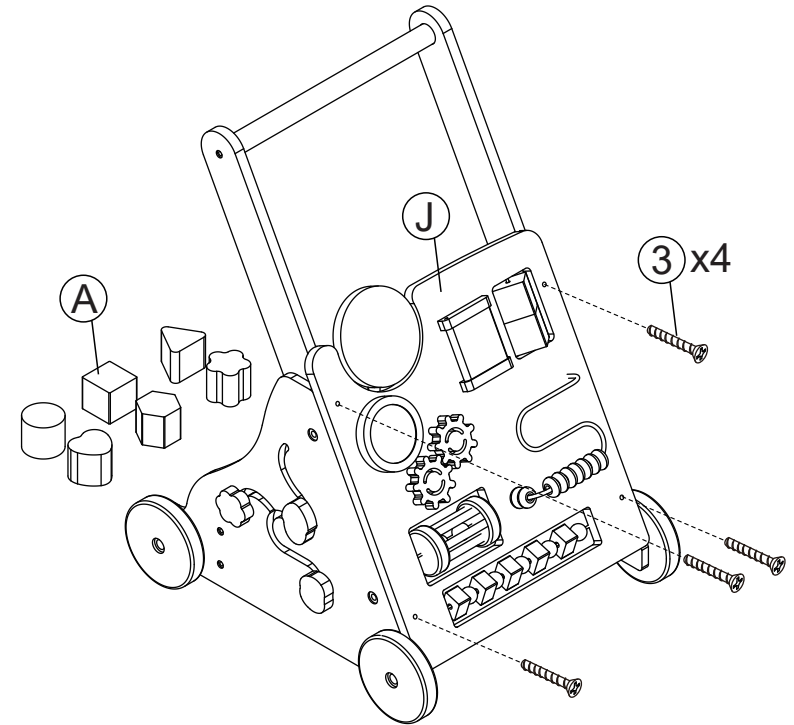
step 5:



step 6:



step 7:



Care and Maintenance

All assembly fittings should be tightened properly, checked regularly and re-tightened as necessary using the correct tool. Do not over-tighten them.
Remove all packaging and fasteners before giving product to child.
Please retain packaging for future reference as it contains important information.
Wipe clean only with a soft cloth.



If you need help or have damaged or missing parts, call the **Customer Helpline**: 0345 640 2020
Produced in China for Argos Limited. Sainsbury's Supermarkets Ltd.
Address: London, EC1M 6HA, UK. [Argos \(N.I.\) Ltd](#) and Sainsbury's (NI) Ltd.
Forestside Shopping Centre, Upper Galwally, Belfast, BT8 6FX, UK.
argos.co.uk/help/contact-us
help.sainsburys.co.uk/help/contact-us