



BaByliss FOR *men*®



3 IN 1 PERSONAL TRIMMER

Model 7051AU





BaByliss^{OK}*men*[®]

3 in 1 Personal Trimmer

Safe, easy and gentle trimming for sideburns, eyebrows, nose and ear hair.

FEATURES:

- Battery operated trimmer (requires 1 x AA battery - included).
- Vertical Trimmer attachment for eyebrows with comb guide for different lengths.
- Rotary Trimmer attachment for unwanted ear and nose hair.
- Wide Trimmer for sideburns and other facial hair.
- Convenient storage stand to hold trimmer and attachment heads.
- 3 years guarantee.

SAFETY CAUTIONS

- This appliance should only be used as described within this instruction book. Please retain for reference.

IMPORTANT CHILD SAFETY

WARNING! Polythene bags over the product or packaging may be dangerous. To avoid danger of suffocation, keep away from babies and children. These bags are not toys.

IMPORTANT SAFETY

- Do not immerse the appliance in water or other liquids.
- Always inspect the appliance before use for noticeable signs of damage. Do not use if damaged or if the appliance





has been dropped. In the event of damage contact the Conair Customer Care Centre (refer to 'UK Guarantee' section for further information).

- Only use the attachments supplied with this appliance.
- Do not leave the appliance unattended when switched on.
- Do not place the appliance on any surface whilst in operation.
- Special care is required when using the appliance close to the ears, eyes and face.
- This appliance should not be used by adults whose reduced physical, sensory or mental capabilities, or whose lack of experience and knowledge, might cause a hazard, unless they have been correctly instructed to understand the safe use and hazards involved and are adequately supervised.
- Careful adult supervision is required when this appliance is used on or near children. Do not use on very young children.
- This appliance should not be used, cleaned or maintained by children. Keep out of reach of children.
- Always ensure that this appliance is kept out of the reach of children at all times, particularly during use and whilst cooling.
- Allow the appliance to cool before storing away.
- This product complies fully with all appropriate EU and UK Legislation and the Standards relevant to this type and class of appliance. We are an ISO9001:2015 certified company that continually evaluates our Quality





Management System performance. If you have any queries regarding product safety and compliance, please contact the Conair Customer Care Line (refer to “UK After Sales Service” section).

- The battery should be removed for safe disposal at the end of its life.
- When the battery has run down, it should be disposed of at a recycling centre to safeguard the environment. If the battery leaks, avoid touching it and dispose of it at a recycling centre.

INSTRUCTIONS FOR USE:

Preparation for Use

- Always inspect the appliance before use for noticeable signs of damage. Do not use if damaged.
- Ensure the trimming heads are free from hair and debris (refer to Cleaning and Maintenance section for further information).

Changing Trimmer Heads

- Your trimmer is supplied with 3 interchangeable cutting heads.
- To remove the trimming head, turn the head anti-clockwise until the ‘I’ mark aligns with the ‘←’ mark, then lift the head gently. (Fig. 1).

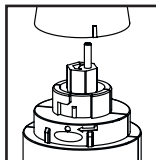


Fig. 1





- To reassemble the head onto the body, align the 'I' mark on the head with the '←' mark on the body and then turn clockwise until the 'I' mark aligns with the 'circle' mark on the body (Fig. 2)

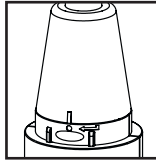


Fig. 2

Using the Rotary Trimmer Head

- Switch the trimmer ON.
- Gently insert the trimmer into your nose or ear to trim unwanted hair.
- Gently move it in a circular motion.
- Never switch the trimmer off whilst in the nose and ear hair.

Note: Use this trimmer only at the entrance to the ears or nose. Do not use any deeper than this – this can cause injury.

Using the Vertical Trimmer Head

- Switch the trimmer ON.
- Move the trimmer upwards and outwards through the hair you wish to remove. The mini trimmer is ideal for eyebrows.

With the comb guide (only to be used on eyebrows)

- The eyebrow attachment has two settings; approximately 2mm (S) and 4mm (L). (See Fig. A). Choose the desired length.

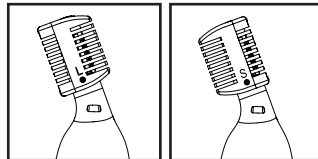


Fig. A





- Place the comb guide over the Vertical Trimmer attachment head. (See Fig. B). Ensure you have aligned the arrow on the Vertical Trimmer attachment head with the correct length setting on the comb guide.

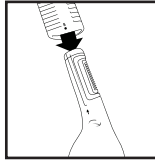


Fig. B

- Switch the trimmer 'ON'.
- Move the comb guide through the hair you wish to remove following the direction of hair growth until you reach the desired length.

Note: never submerge unit handle into water.

Using the Wide Trimmer Head

- Switch the trimmer ON.
- Move the trimmer upwards and outwards through the hair you wish to remove. The wide trimmer is ideal for tidying sideburns and small areas of facial hair.

Note: never submerge unit handle into water.





CLEANING AND MAINTENANCE:

To maintain optimum performance, the appliance should be cleaned after each use.

- Ensure the appliance is switched off.
- Gently blow any hairs from the trimmer head.
- Each head can be removed and rinsed under the tap.
- Allow the trimmer to dry thoroughly before storing.

Changing the battery

The trimmer requires 1 x AA battery (1.5V). To insert or replace the battery, hold the trimmer upside down with the back facing you, placing both thumbs in the grooves on the top of the unit, firmly push up to remove the casing. Insert the battery as indicated on the inside of the battery compartment. Replace the casing by sliding it back into the main trimmer until it clicks into place. If the appliance remains unused for a while or if the battery has run down, remove it from the appliance.





UK GUARANTEE

This BaByliss for Men appliance is guaranteed for consumer use for 3 years.

This 3 year guarantee will cover defects found due to faulty workmanship or material. Proof of purchase is required to validate the guarantee. The guarantee will be void if the damage has been caused by a fall, alteration or repair by any unauthorised persons. If the appliance does not perform satisfactorily due to defects in materials or manufacture, it will be repaired or replaced through Conair UK After Sales Service. The Conair Group Ltd reserves the right to amend terms and specifications without prior notice.

This guarantee in no way affects your statutory rights.

UK AFTER SALES SERVICE

For further advice on using the appliance or should you need to return your product, please contact the Conair Customer Care Line on 03705 133191 (09:00 to 17:00 Monday to Friday) or email your enquiry to ukinfo@conair.com.

The return address is:

Customer Care Centre
Conair Logistics
Unit 4
Revolution Park
Buckshaw Avenue
Buckshaw Village
Chorley
PR7 7DW

Please enclose your returns number, name and address, together with a copy of proof of purchase and details of the fault.

IB-17/056

