

# Welcome

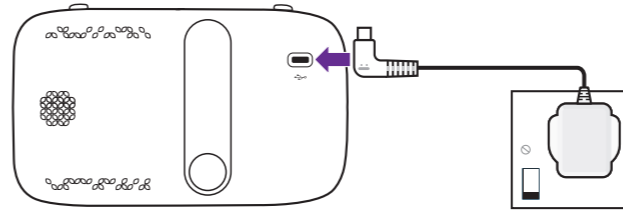
Thanks for buying a BT Baby Monitor. You'll soon be able to relax knowing you can watch and listen for your baby's every breath, gurgle and wriggle. But first things first. To get set up, just follow the steps opposite. If you need any help, go to [bt.com/producthelp](http://bt.com/producthelp) or give us a call on **0808 100 6554**.

## Important safety notices

1. Your baby monitor is designed as just an aid. It isn't a substitute for responsible and proper adult supervision.
2. Make sure all cables and units are out of your baby's reach – at least one metre away.
3. Never cover either unit, put them in moist places or inside the cot, bed or playpen.
4. If you travel abroad, check the voltage on your unit's plugs match the local power output.
5. Do not take the product apart. You can't change the battery installed in the Parent unit. If you need repairs, get in touch with our helpdesk.

# Getting set up

- 1 Plug the cable into the Parent unit, then plug it into the mains power socket and switch the socket on.
- 2 Leave to charge for 12 hours.



## Tip

The first time you use the Parent unit, or if you haven't used it for a long time, it'll take 12 hours to fully charge. The battery life on a single charge lasts for 4 hours. We recommend you keep the cable plugged into the mains power socket if you're going to use for longer than this or throughout the night. When the battery gets very low, it'll take about 30 minutes to charge enough for you to use it for a short time. To charge the Parent unit in the shortest amount of time, turn it off while it's charging.

## General information

### Guarantee

Your Video Baby Monitor 6000 is guaranteed for a period of 24 months from the date of purchase.

Subject to the terms listed below, the guarantee will provide for the repair of, or at BT's or its agent's discretion the option to replace the Video Baby Monitor 6000, or any component thereof, which is identified as faulty or below standard, or as a result of inferior workmanship or materials. Products over 28 days old from the date of purchase may be replaced with a refurbished or repaired product.

The conditions of this guarantee are:

- The guarantee shall only apply to defects that occur within the 24 month guarantee period.
- Proof of purchase is required.
- The equipment is returned to BT or its agent as instructed.

This guarantee does not cover any faults or defects caused by accidents, misuse, fair wear and tear, neglect, tampering with the equipment, or any attempt at adjustment or repair other than through approved agents.

This guarantee does not affect your statutory rights.

To find out what to do, if your monitor is in or outside of the 24 month guarantee, go to [bt.com/producthelp](http://bt.com/producthelp)

### How to recycle your equipment

The symbol shown here and on the product means that the product is classed as electrical or electronic equipment, so DO NOT put it in your normal rubbish bin.

It's all part of the Waste Electrical and Electronic Equipment (WEEE) Directive to recycle products in the best way – to be kinder to the planet, get rid of dangerous things more safely and bury less rubbish in the ground.

You should contact your retailer or supplier for advice on how to dispose of this product in an environmentally friendly way.

### Radio Equipment Directive Declaration of Conformity

Hereby, British Telecommunications plc declares that the radio equipment type BT Video Baby Monitor 6000 (088306) is in compliance with Directive 2014/53/EU.

This device has been evaluated for and shown compliant with European Guidelines when installed and operated with a minimum distance of 16mm between the unit and your body.

The item code for both power supply units is 089010 (BLJ06W050100P1-B).

The full text of the EU declaration of conformity is available at the following internet address: [bt.com/producthelp](http://bt.com/producthelp)

### Radio transmission information

Frequency range	2415.375 – 2471.625MHz
Max power	81.28mW (19.1dBm)




© British Telecommunications plc 2017.  
Registered Office: 81 Newgate Street, London EC1A 7AJ. Registered in England No. 1800000  
Designed and produced by The Art & Design Partnership (ADP). Printed in China / Issue 4 / ADP12-17

## Need some help?

Frequently asked questions are available online.

 [bt.com/producthelp](http://bt.com/producthelp)

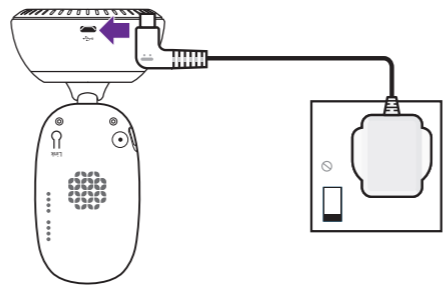
If you cannot find the answer to your question online, call our free Helpline. Our dedicated advisors are more likely to be able to help you than the retailer where you bought your baby monitor.

 **0808 100 6554\***

This user guide is also available in other formats: large print, Braille and audio CD. Call the helpline for a copy.

\* Calls made from within the UK mainland network are free. Mobile and international call costs may vary.

- 3 Place the Baby unit near a power socket in the room where you're going to be monitoring your baby most of the time. It should also be at least one metre away from your baby.
- 4 Plug the cable into the Baby unit, then plug it into the mains power socket and switch the socket on.
- 5 Slide the **OFF** button on the side of the Baby unit up to turn it on.



## Tip

Keep the power cord out of baby's reach by looping any extra length and securing it.

## Troubleshooting

**My Parent/Baby unit isn't working. What should I do?**  
Check that:

- 1 power cables are plugged in and switched on at the wall socket
- 2 the Baby unit is plugged in and the Parent unit battery is fully charged (for 12 hours)
- 3 both units are turned on
- 4 the Parent unit isn't too far from the Baby unit (large obstructions or other electrical devices might affect the signal between the Parent and Baby unit).
- 5 unplugging the power cables, waiting about 15 seconds, and then plugging them back in can help.

**My Parent/Baby unit is making a high-pitched noise. What should I do?**

The units might be too close together. Make sure they're at least one metre apart, even when you're using the **Talk** button.

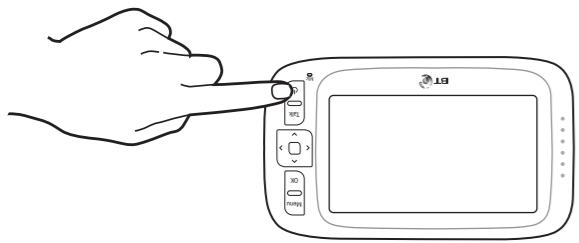
### Why is my Parent unit beeping?

The Parent unit beeps when:

- the Baby unit is turned off
- the units are too far apart – try moving them closer together (but not closer than one metre)
- the battery in the Parent unit isn't charged – try charging it for 12 hours
- Other electronic items, like TVs and mobile phones, are causing interference – try moving the Baby unit away from things like that.

## What's the range?

The maximum range between your Parent and Baby units is about 250 metres outdoors and about 50 metres indoors. Thick walls and doors reduce the units' range and affect how they link to each other.



After the Parent unit has charged for 12 hours you can switch it on. Before you do, move the Parent unit at least one metre from the Baby unit. Any closer and you might get audio feedback sounds. Press the **Talk** button and hold for 2 seconds to turn the Parent unit on.

The Parent and Baby unit are automatically linked so they are now ready to use.

# Using the Parent unit

**Turn on and off**  
Press and hold for 2 seconds to turn on and off.

**Using the menu**

- Press to open the main menu. Scroll through the menu options across the bottom of the screen using and . When the menu option you want is highlighted, use or to scroll through the sub menus and press to select.
- Press to exit the menu and return to the main monitoring screen.

**Monitoring volume and mute**

There are 8 volume settings. The default is 4.

- In monitor mode, press or to change the volume.
- Press to confirm.
- To turn the sound off completely, turn the volume down to 0. will be displayed on top of the screen.

**Screen brightness**

There are 8 brightness levels. The default is 4.

- In monitor mode, press or to select the brightness level.
- Press to confirm.

**Lullabies**

There are 5 lullabies to choose from or you can play all 5 in sequence.

- Press , is displayed.
- Press or to choose the lullaby 1-5 or press to play all five, then press .
- Press or to select the volume from 1-3 and press to save.
- To stop the lullaby playing, select .

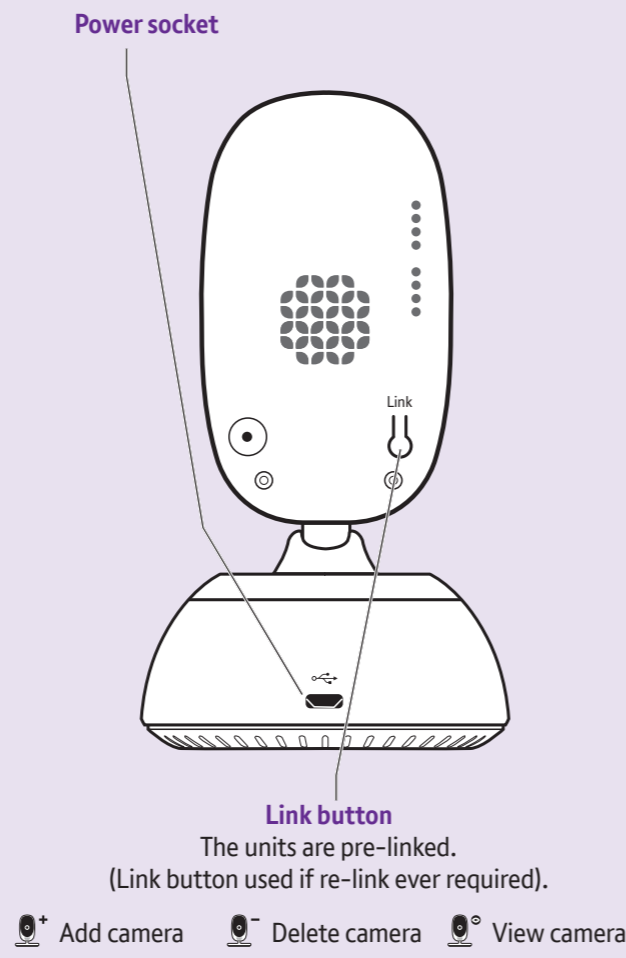
**Talk to your baby**

To give your baby some words of comfort, press and hold down on the Parent unit and speak into the Parent unit's microphone. The will be displayed at the bottom right corner. Release the button when you've finished speaking.

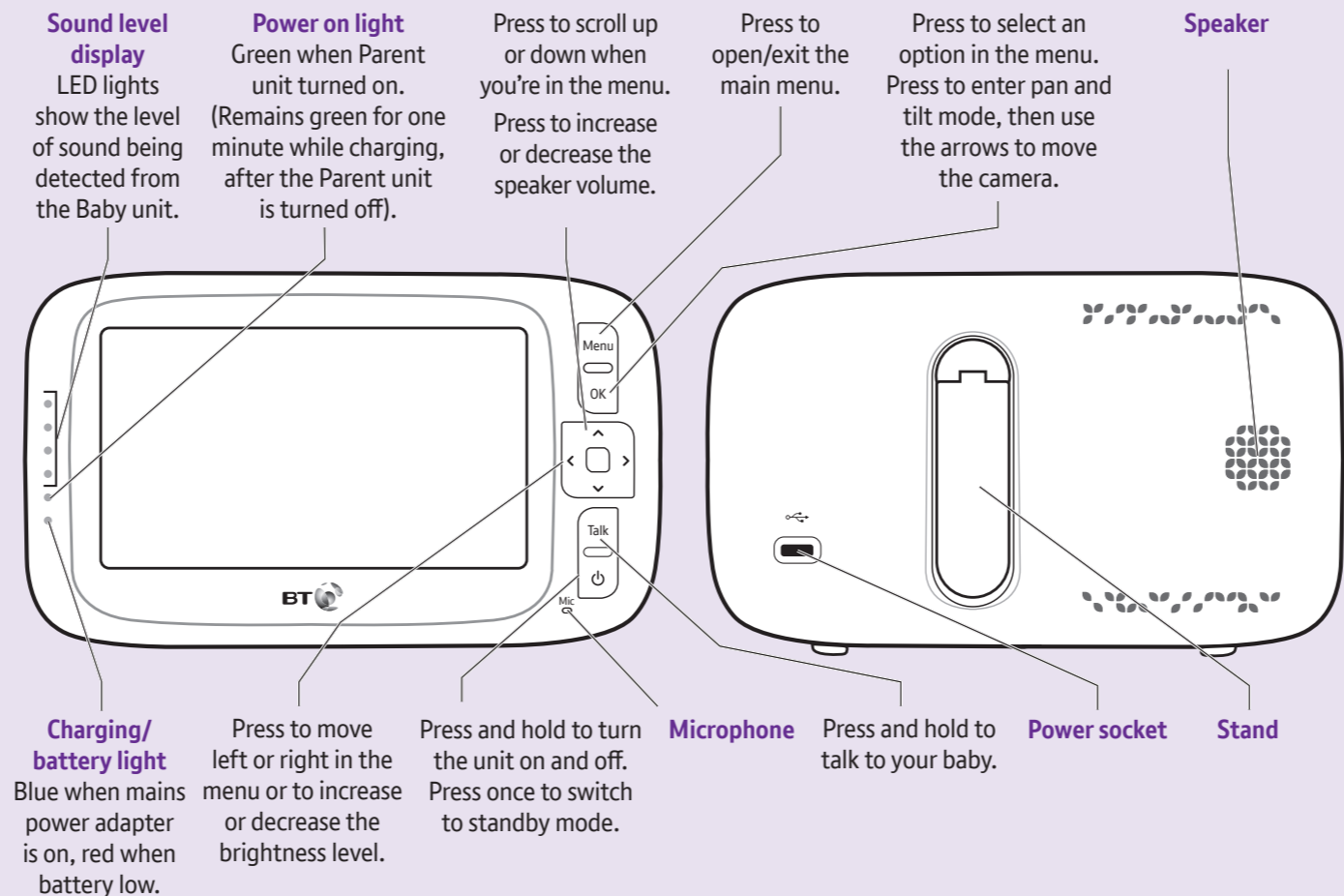
**Pan/tilt and Zoom in/out**

- To enter/exit the pan/tilt mode, press . When in Pan/tilt mode, press , , , to move the image.
- To enter zoom mode, press , then press to display , then press or to select the zoom level and press to exit menu.

# Get to know your Baby unit



# Get to know your Parent unit



**Set a reminder**

You can set an alert to remind you of something you need to do, for example when your baby's next feed is due. You can set it for 2, 4 or 6 hours.

- Press , then press to display .
- Press or to select the reminder time (2H, 4H or 6H), then press to save. The will be displayed on the top right of the screen.
- To cancel the alert, select .

**Set the screen to turn on and off automatically**

You can set the screen to turn on by pressing any button. On this setting, the screen will turn off automatically when no button is pressed during 1, 3 or 5 minutes.

- Press , then press to display .
- Press and to select 1, 3 or 5 minutes and press .
- To turn the screen back on at any time, press any button. If you want to set the screen on all the time, set the screen setting to off .

**Turn sound activated screen mode on or off**

When set to On, the screen will turn on if noise is detected from the Baby unit. If it's set to Off, the screen will stay off even if noise is detected. To use this feature, you need to set the standby mode first to 1, 3 or 5 minutes as described above.

- Press , then press to display .
- Press or to select (for On) or (for Off) and press .
- To turn the screen back on at any time, press the .

**Temperature sensor**

The reading from the temperature sensor will be displayed at the top of the Parent unit screen.

To change the temperature display from C to F:

- Press , then press to display and press .
- Press or to select °C or °F, then press .

**Other screen icon descriptions**

Signal strength	Sound on
Baby unit switched on	Mute
Camera identification number e.g. Camera 1	Battery status (Full battery shown, scrolling when charging)

# Using the Baby unit

**Turn on and off**

- Slide the button on the side of the Baby unit up to turn on and down to turn off.

**Night vision**

So that you can see your baby at night, the Baby unit automatically uses the light from its infrared LED lights to capture images in a dark room. Because of that, it can only show images in black and white. The will be displayed at the top of the screen.