

**WAHL®**

**PET NAIL  
GRINDER**

## PET NAIL GRINDER

Please read all instructions carefully to familiarise yourself with the Wahl Pet Nail Grinder before using.

Save these instructions for further reference.

For any further assistance or information visit

W: [www.wahl.co.uk](http://www.wahl.co.uk)

E: [customer.services@wahl.co.uk](mailto:customer.services@wahl.co.uk)

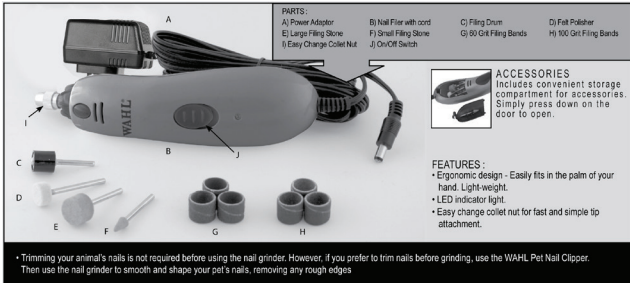
## CONTENTS

<b>DESCRIPTION OF PARTS</b>	<b>Page 3</b>
<b>IMPORTANT SAFEGUARDS</b>	<b>Page 4</b>
<b>OPERATING INSTRUCTIONS</b>	<b>Page 7</b>
<b>CLEANING AND MAINTENANCE</b>	<b>Page 8</b>
<b>WIRING</b>	<b>Page 9</b>
<b>DISPOSAL</b>	<b>Page 9</b>
<b>PRODUCT REGISTRATION</b>	<b>Page 10</b>
<b>GUARANTEE</b>	<b>Page 11</b>

## PET NAIL GRINDER

### DESCRIPTION OF PARTS

- A: Power Adaptor
- B: Nail Filer with Cord
- C: Filing Drum
- D: Felt Polisher
- E: Large Grinding Stone
- F: Small Grinding Stone
- G: 60 Grit Filing Stones
- H: 100 Grit Filing Stones
- I: Easy Change Locking Nut
- J: On/Off Switch



### ACCESSORIES

Includes convenient storage compartment for accessories. Simply press down on the door to open.

## PET NAIL GRINDER

### **IMPORTANT SAFEGUARDS**

When using this electrical appliance, especially when children are present, basic safety precautions should always be followed including the following.

#### TO REDUCE THE RISK OF FIRE AND INJURY

1. This appliance can be used by children from aged 8 years and above and persons with reduced physical, sensory or mental capabilities, or lack of experience and knowledge, if they have been given supervision or instruction concerning use of the appliance in a safe way and understand the hazards involved. Children shall not play with the appliance. Cleaning and user maintenance shall not be made by children without supervision.
2. Switch off the appliance and unplug from outlet when not in use, before putting on or taking off attachments and also before cleaning the appliance.
3. Never use your appliance without paying attention! Always unplug the unit when not in use, even for a moment.

## PET NAIL GRINDER

4. Do not operate the appliance with a broken cord or plug, or if the appliance malfunctions, or is dropped or damaged in anyway.
5. Do not wrap the cord around the appliance.
6. Any servicing or repair must be performed by an authorised service representative.
7. Do not use outdoors or in damp areas.
8. Do not let the cord hang over the edge of the work surface or let it touch any hot surfaces.
9. The use of attachments that are not supplied by the manufacturer may cause fire, electric shock or injury and damage to the appliance.
10. To protect against risk of electrical shock, never immerse the unit or let it come into contact with water or any other liquids. Do not use the unit with wet hands. If the appliance should become wet, damp or fall in water, remove plug from mains socket immediately. Do not put your hands in the water. Do not take into bathroom.
11. Never carry the unit by its power cord.
12. Do not drop or insert any object into any opening.

## PET NAIL GRINDER

13. Use this appliance only for its intended purpose.
14. As a precaution safety glasses should be used at all times, when using this appliance. Long hair should be tied back and jewellery should be removed to avoid any contact with moving parts of the machine.
15. Never operate this appliance with the air openings being blocked or while on a soft combustible surface, such as a bed or sofa, where air openings may be blocked. Keep the air openings (if any) free from lint, hair or the like.



**WARNING: KEEP THE APPLIANCE DRY.**

## OPERATING INSTRUCTIONS

1. Using your thumb, apply light to moderate pressure to your pet's pads in order to separate their toes. Hold paw firmly.
2. Turn appliance ON. The ON/OFF switch is located on the front of the appliance.
3. For best results, start filing from the bottom of the nail, slowly moving toward the tip. Apply consistent pressure, moving the grinder from side to side on each nail.



**WARNING:** Do not over-file or apply excessive pressure.

4. To avoid tangling of hair on long-haired breed dogs, push hair away from pets paw before using the appliance. For best results, use a nylon stocking over pets paw and push nails through stocking.
5. For larger dogs, position the front paw forward in order to file nails.
6. For smaller animals, hold their paw up and position it below their body. Pay extra attention not to entangle hair.

## CHANGING ATTACHMENTS

1. Ensure appliance is in the OFF position before changing attachments.
2. To unlock the locking nut, simply press on the release button located at the top/front of the machine.
3. Press your thumb firmly on the release button; turn the locking nut counter clockwise until the attachments release.
4. While pressing on the release button, insert attachment head as far as it can go. Turn the locking nut clockwise until it tightens and is secured into place.
5. Remove thumb from release button.

## APPLYING FILING BANDS TO FILING DRUM

1. Select either the 60 or 100 sanding grit filing band (60 grit medium sanding band for quick efficient filing down of your

## PET NAIL GRINDER

- pets nail; 100 grit fine filing band for smoothing uneven rough nails).
2. Place the filing band over the filing drum until it is in place (please note, you will find it sits loosely over the grinding drum). In order to properly secure its placement, use a screw driver to adjust the screw at the top of the filing drum. Screwing it in a clockwise direction will allow the drum to expand, creating the perfect fit.


NOTE: Ensure Grinding and Filing attachments are properly secured before use.

## CLEANING AND MAINTENANCE

1. After each use, remove any debris and dust from the grinder by using a soft brush.
2. To clean the housing, use a soft, dry cloth.
3. For maximum efficiency, ensure grinding attachments and filing bands are properly replaced when worn and blunt.
4. Periodically examine tool for any wear or damage.
5. To order replacement accessories, please visit [www.wahlstore.co.uk](http://www.wahlstore.co.uk).



## WIRING

 **WARNING:** If the supply cord is damaged it must be replaced by the manufacturers service agent or a similarly qualified person in order to avoid a hazard.

This product must only be used with the transformer supplied. Should a replacement be required visit [www.wahlstore.co.uk](http://www.wahlstore.co.uk).

## DISPOSAL

 **Handle with care! Environmental damage in the case of incorrect disposal.**

Correct disposal will ensure environmental protection and prevent any potentially harmful impacts on people and the environment.

Adhere to the relevant legal requirements when disposing of the appliance.

**Information on the disposal of electrical and electronic appliances in the European Community:**



Within the European Community, national regulations are specified for the disposal of electrical appliances, based on EU Waste Electrical and Electronic Equipment Directive 2002/96/EC (WEEE). In accordance with this, the appliance can no longer be disposed of with the local or domestic waste.

The appliance will be accepted free of charge by local collection points or recycling centres.

PET NAIL GRINDER

## **PRODUCT REGISTRATION**

Wahl are constantly developing and launching new products in the UK. We would like to understand your product needs and expectations and we value any comments you may have. As part of Wahl Customer Services, we are offering you the chance to be kept up to date with the latest product launches, innovations and special offers.

Please take a minute to register your product online at **[www.wahl.co.uk](http://www.wahl.co.uk)**

## **GUARANTEE**

This product is guaranteed against defects in material and workmanship for a period of 2 years from the date of original purchase or receipt as a gift.

Should this product become defective during the guarantee period, return it to the store of purchase together with your proof of purchase for repair or replacement.

Alternatively within the guarantee period you can return the product to Wahl (UK) Ltd who will repair any such defect or elect to replace the product or any part of it, without charge, provided there is proof of purchase. Should a replacement be offered this will not extend the original guarantee period.

The guarantee becomes invalid in the case of misuse, alteration or repair by unauthorised persons.

This guarantee does not include blades, cables, shaver heads, foils and cutters etc., which are consumable parts.

This product is designed for domestic use only and use within a professional environment will invalidate the guarantee.

This guarantee in no way affects your rights under law in the United Kingdom.

WAHL (UK) LIMITED  
HERNE BAY WEST INDUSTRIAL PARK  
SEA STREET  
HERNE BAY  
KENT  
CT6 8JZ.

CUSTOMER SERVICES T: 01227 740066  
[www.wahl.co.uk](http://www.wahl.co.uk)

Form No. ZB041  
Rev3 11-17