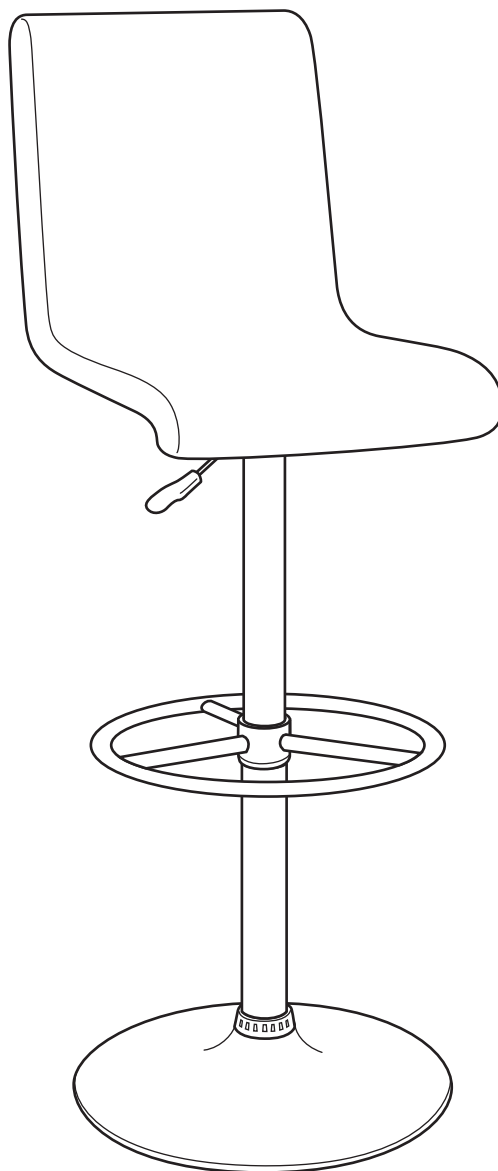


Turner Bar Stool

Assembly Instructions - Please keep for future reference

600/1955

612/6768



Dimensions

Width - 41cm
Depth - 52cm
Height - 97-119cm

Important - Please read these instructions fully before starting assembly

If you need help or have damaged or missing parts, call the **Customer Helpline:**
Argos = 0345 640 0800



Safety and Care Advice

Important - Please read these instructions fully before starting assembly

- Do not discard any of the packaging until you have checked that you have all the parts and the pack of fittings.
- Discard all extra fittings and keep fittings out of reach of children.
- At least 2 people are required to assemble this product.
- Assemble this product on a flat surface.

- Assemble all parts loosely before tightening any bolts.
- Unit weight: 9kgs.
- Maximum safe weight of user: 110kgs.
- Retain Assembly Instructions for future reference.
- Dispose of all packaging carefully and responsibly.



• We do not recommend the use of power drill/drivers **for inserting screws**, as this could damage the unit. Only use hand screwdrivers.

Warnings

- Do not stand on the stool.
- Do not use the stool as a step ladder.
- Make sure the legs remain in contact with the ground.
- Do not knock the surface of the seat against sharp solid surfaces.
- This product should only be used on firm, level ground.
- Do not sit with sharp objects in back pockets as this may damage the seat surface.

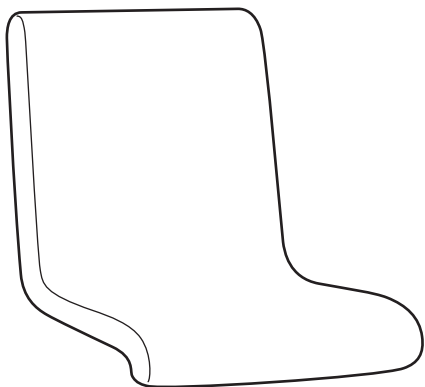
Care and maintenance

- Please clean the product using either damp (not wet) cloth and a mild domestic soap solution or by using an appropriate polish.
- Do not use any abrasive materials when cleaning.
- From time to time check that there are no loose bolts on this unit.

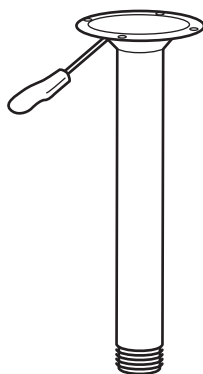
Components - Parts

If you have damaged or missing components,
call the **Customer Helpline: Argos = 0345 640 0800**

Please check you have all the parts listed below



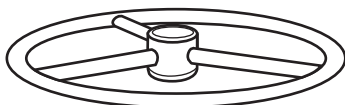
1 Seat
(41.5 x 41 x 52cm)



2 Upper leg
(Ø16 x 39.5cm)



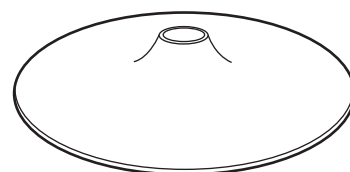
3 Gaslift
(Ø5 x 50.5~72.5cm)



4 Foot rest
(Ø1.6 x 38 x 3.3cm)



5 Decor ring
(Ø5 x 7.5 x 2.2cm)

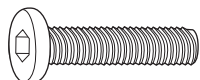
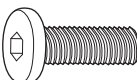




6 Base
(Ø41 x 8.5cm)

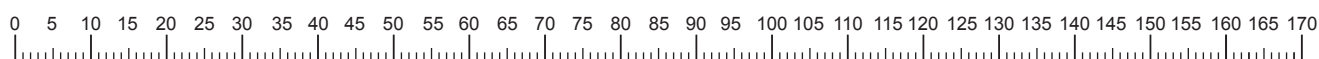
Components - Fittings

Please check you have all the fittings listed below

Note: The quantities below are the correct amount to complete the assembly. In some cases more fittings may be supplied than are required.

<p>A </p> <p>M6 x 25mm Bolt x 2</p>	<p>B </p> <p>M6 x 18mm Bolt x 2</p>	<p>C </p> <p>Washer x 4</p>
<p>D </p> <p>Allen key x 1</p>		

Ruler - Use this ruler to help correctly identify the screws



Assembly Instructions

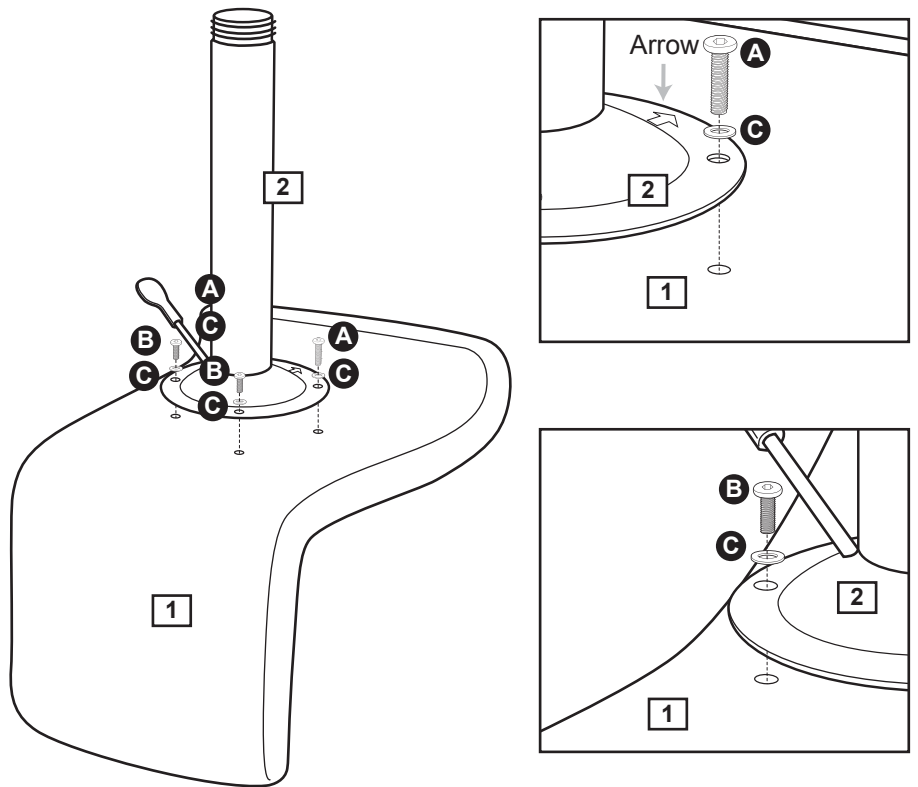
Step 1

Attaching upper leg

Place the seat **1** upside down on a flat protected surface.

Position the upper leg **2** and make sure that the arrow on the plate is pointing towards the front edge of the seat as shown in the inset diagram.

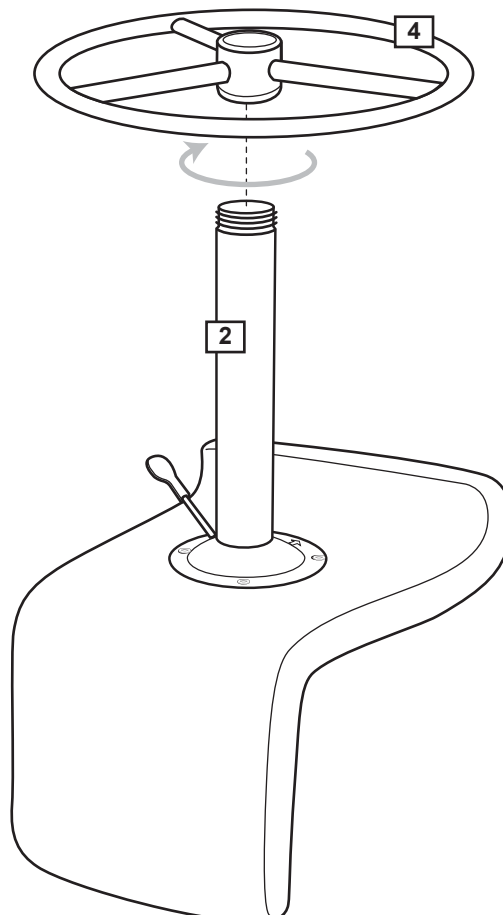
Secure using washers **C** and bolts **A** for the two holes near the front of the seat & bolts **B** for the back holes.



Step 2

Attaching footrest

Connect the footrest **4** into the upper leg **2** by turning it clockwise.



Assembly Instructions

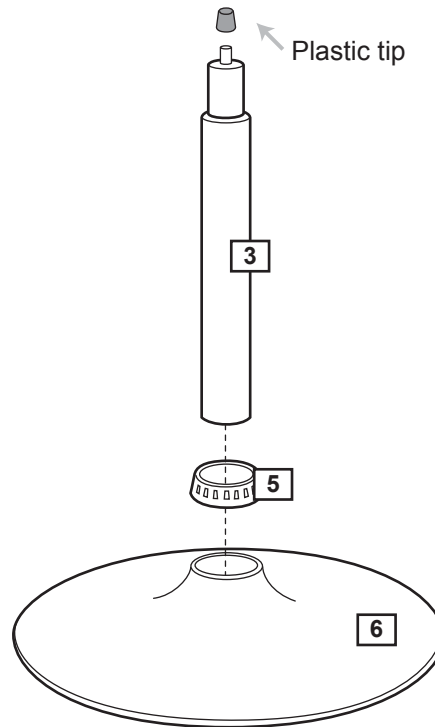
Step 3

Attaching gaslift

Place the base **6** on a flat protected surface. Position the decor ring **5** on the base and insert the gaslift **3** into the decor ring and hole of the base.



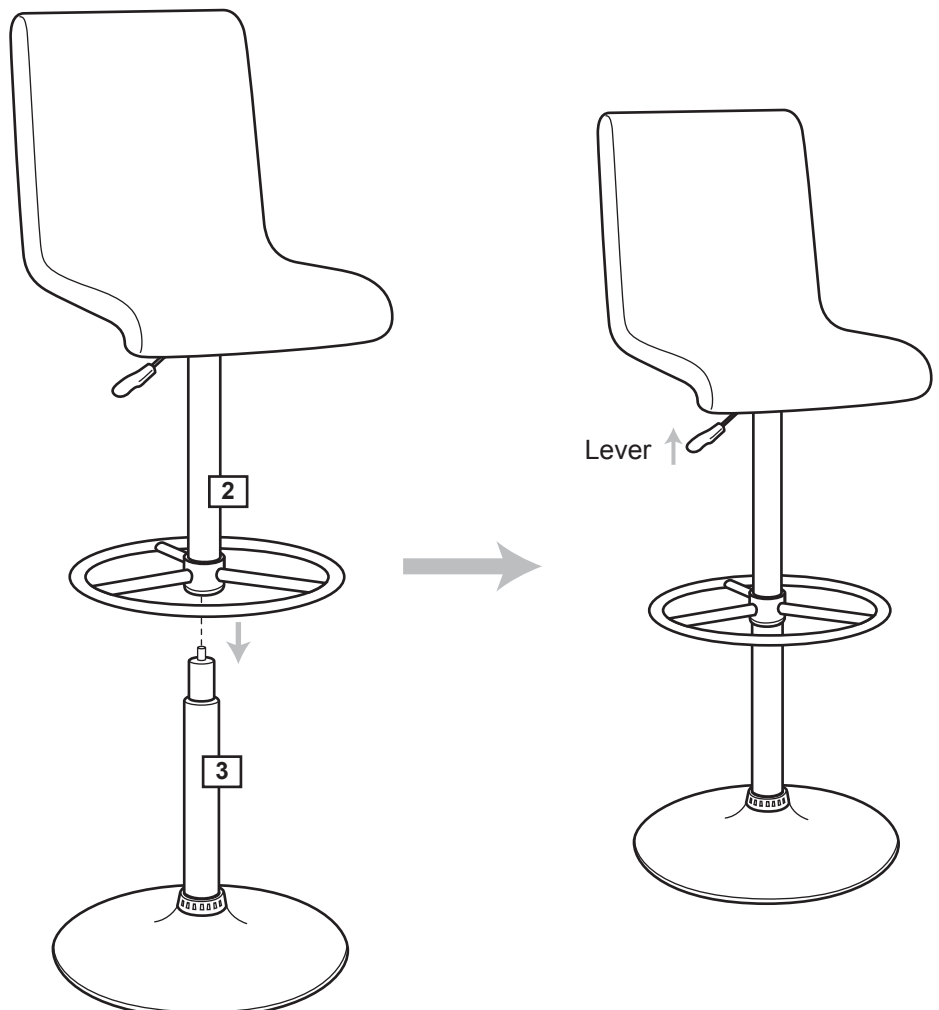
Important: Remove plastic tip cover on gaslift before assembling.



Step 4

Attaching the seat

Position the seat as shown and insert the gaslift **3** into the upper leg **2**. Secure by pressing down the seat firmly.



Gaslift operation

To adjust the seat higher, lift up the lever under the seat and release at desired height.

To lower the seat, lift up the lever while seated on the stool.

Assembly is complete.

If you need help or have damaged or missing parts, call the **Customer Helpline: Argos = 0345 640 0800**