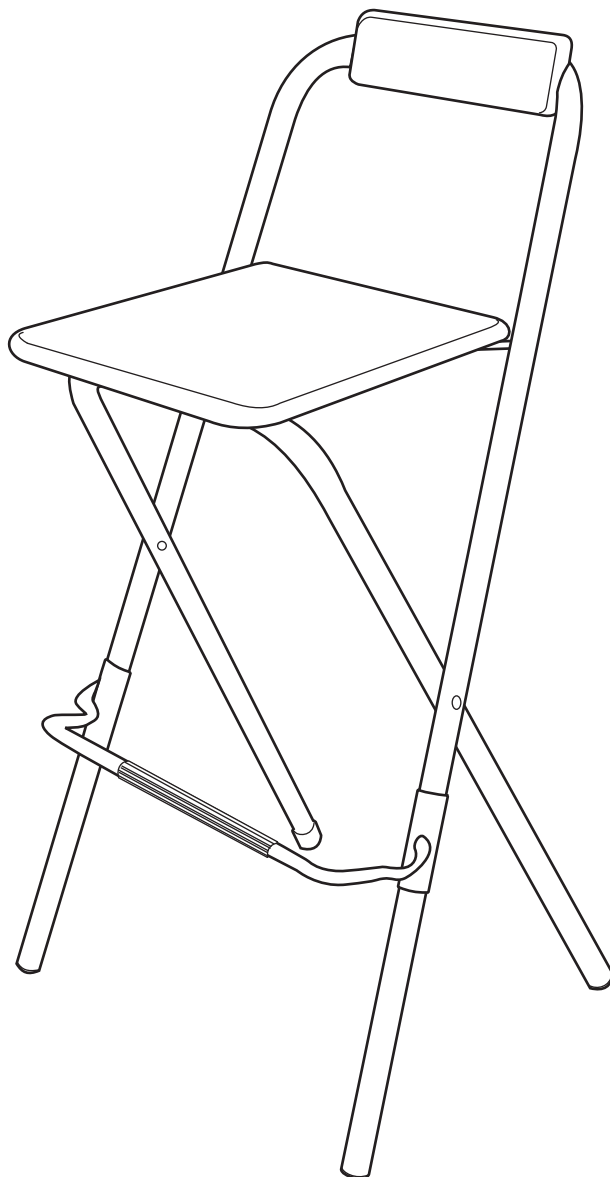


Theo Pair Of Folding Bar Stools

Assembly Instructions - Please keep for future reference

600/0262



Dimensions

Width - 48cm
Depth - 45cm
Height - 98cm

Important - Please read these instructions fully before starting assembly

If you need help or have damaged or missing parts, call the **Customer Helpline: 08456 400800**



Safety and Care Advice

Important - Please read these instructions fully before starting assembly

- We suggest you spend a short time reading through this leaflet and follow the simple step by step assembly instructions.
- Assemble this product on a flat surface.
- Maximum safe weight of user: 110kgs.
- Unit weight: 4.5kg.
- Retain Assembly Instructions for future reference.

Warnings

- Do not stand on the stool.
- Do not sit with sharp objects in back pockets as this may damage the seat surface.
- Do not knock the surface of the seat against sharp solid surfaces.
- Do not use the stool as a step ladder.

Care and maintenance

- Please clean the seat surface using either damp (not wet) cloth and a mild domestic soap solution or by using an appropriate polish.
- Do not use any abrasive materials when cleaning.

Assembly Instructions

Step 1

Opening the stool

Open up the folded stool by pulling from the front edge of the seat while holding back the backrest. Then press firmly down the seat pad with both hands till you hear the clips on the seat pad lock onto metal rod frame on the underside. Open up the footrest by pressing it down.



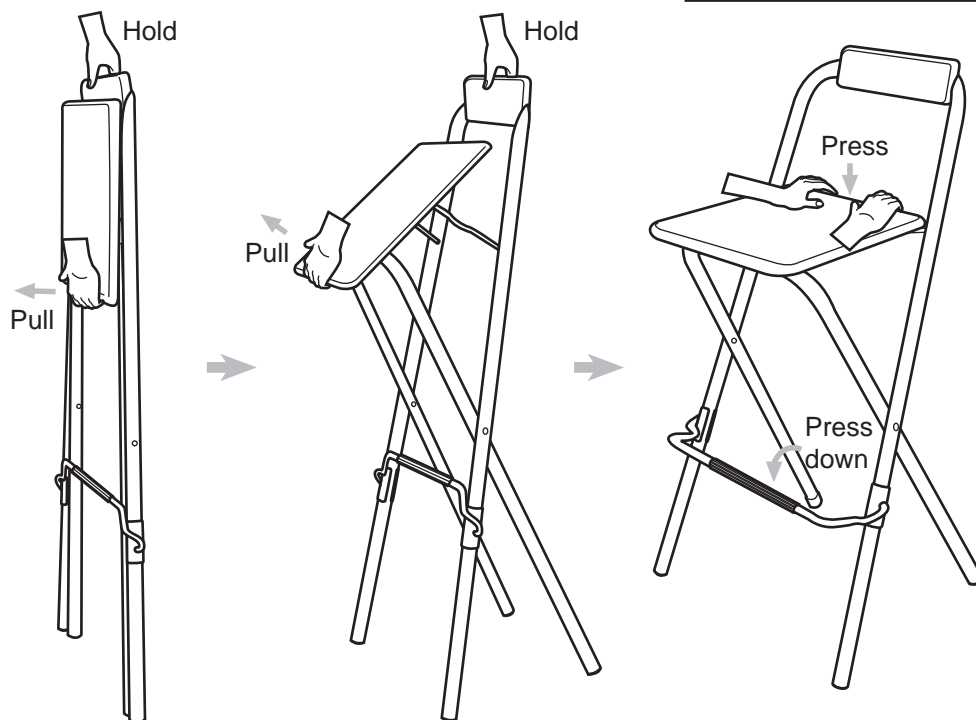
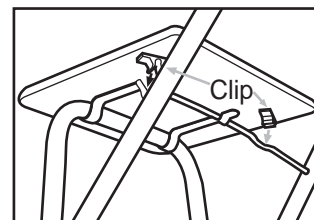
Important:

Please ensure the clips on the underside of the seat pad are securely fastened before you sit.



Important:

Keep hands away from folding mechanisms to prevent possible entrapment or injury.



Step 2

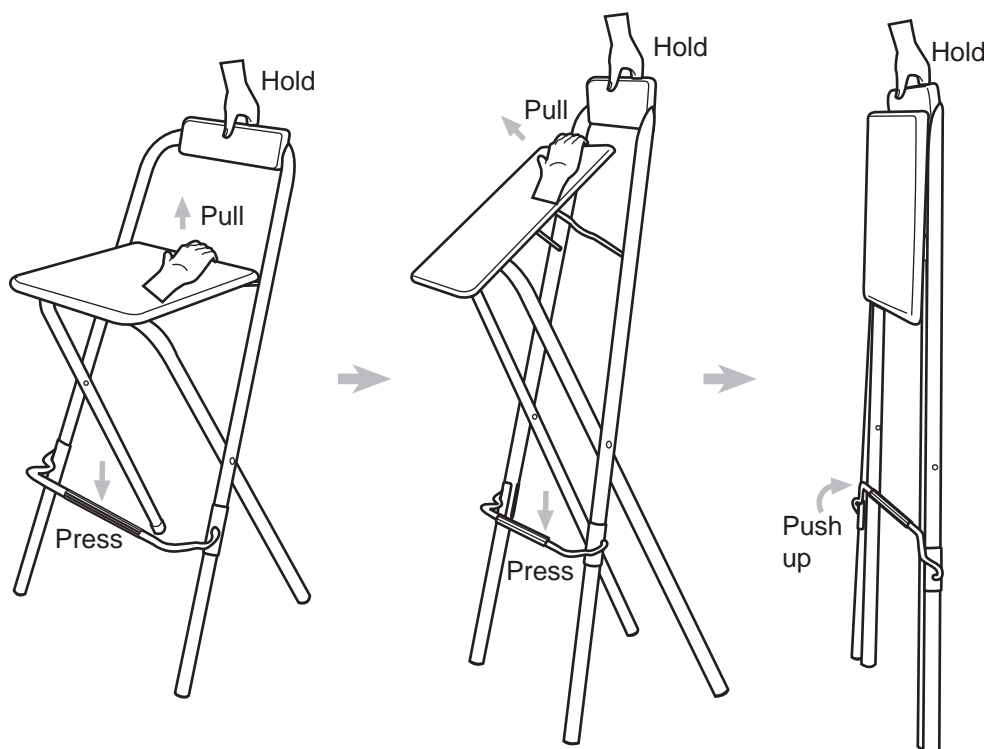
Folding the stool

Hold the stool as shown, then fold the stool by pulling from the back edge of the seat while pressing the footrest with your foot. Then fold the footrest by pushing it up.



Important:

Keep hands away from folding mechanisms to prevent possible entrapment or injury.



If you need help or have damaged or missing parts, call the **Customer Helpline: 08456 400800**