

**CHAD VALLEY BABY™**

Circus Friends™

**578/1812**

Deluxe Baby Bouncer



**IMPORTANT! KEEP FOR FUTURE REFERENCE.**

**Argos**

**Avebury, 489-499 Avebury Boulevard, Milton Keynes, MK9 2NW**

**[www.argos.co.uk](http://www.argos.co.uk)**

**Customer Helpline: 03456 400 800**

**5781812**





## WARNING

**FALL HAZARD:** Babies have suffered skull fractures falling while in and from bouncers when not used properly.

- Use bouncer **ONLY** on floor
- A child's movement can slide the bouncer. • **NEVER** place the bouncer on countertops, tables, on or near steps or on other elevated surfaces. • **ALWAYS** use on the floor.
- **NEVER** lift or carry baby in bouncer

**SUFFOCATION HAZARD:** Babies have suffocated when bouncers tipped over on soft surfaces.

- **NEVER** use on a bed, sofa, cushion, or other soft surface.
- **NEVER** leave baby unattended.

To prevent **falls and suffocation:**

- **ALWAYS** use restraints. Adjust to fit snugly.
- **STOP using bouncer when baby starts trying to sit up (approximately 5 months of age).**
  - o **ONLY** use the product when the child weighs more than 3kg and less than 9kg.
- This bouncer is not intended for prolonged periods of sleeping.
- **NEVER** lift bouncer using a toy bar as a handle.
- **NEVER** use as an infant carrier for automobile or airline travel.
- **NEVER** attach any additional strings or straps to product or toy bar

## IMPORTANT

- Adult assembly required.
- Please read all instructions before assembly and use of the product.
- Care should be taken in unpacking and assembly.
- Examine product frequently for damaged, missing, or loose parts.
- **DO NOT** use if any parts are missing, damaged, or broken.
- Contact Kids II for replacement parts and instructions if needed. Never substitute parts.
- This product has not been designed for sleeping. Should your child need to sleep, they should be placed in a suitable cot or bed.

# Battery Information

EN

The Music/vibration Unit requires (1) size C/LR14 (1.5V) alkaline batteries (not included).



**CAUTION:** Follow the battery guidelines in this section. Otherwise, battery life may be shortened or the batteries may leak or rupture.

- Always keep batteries away from children.
- Do not mix old and new batteries.
- Do not mix alkaline, standard, or rechargeable batteries.
- Only batteries of the same or equivalent type as recommended are to be used.
- Install the batteries so that the polarity of each one matches the markings in the battery compartment.
- Do not short-circuit the batteries.
- Do not store batteries in areas that have extreme temperatures (such as attics, garages, or automobiles).
- Remove exhausted batteries from the battery compartment.
- Never attempt to recharge a battery unless it is specifically marked "rechargeable."
- Rechargeable batteries are to be removed from the toy before being charged.
- Rechargeable batteries are only to be charged under adult supervision.
- Do not use rechargeable alkaline batteries in a Ni-Cad or Ni-MH battery charger.
- Please use the correct disposal method for batteries.
- Remove batteries before putting the product into storage for a prolonged period of time.
- Weak batteries cause erratic product operation, including distorted sound, dimming or failed lights, and slow or non-working motorized parts. Because each electrical component requires a different operating voltage, replace the batteries when any function fails to operate.
- Do not dispose of product or batteries in fire, batteries may explode or leak.

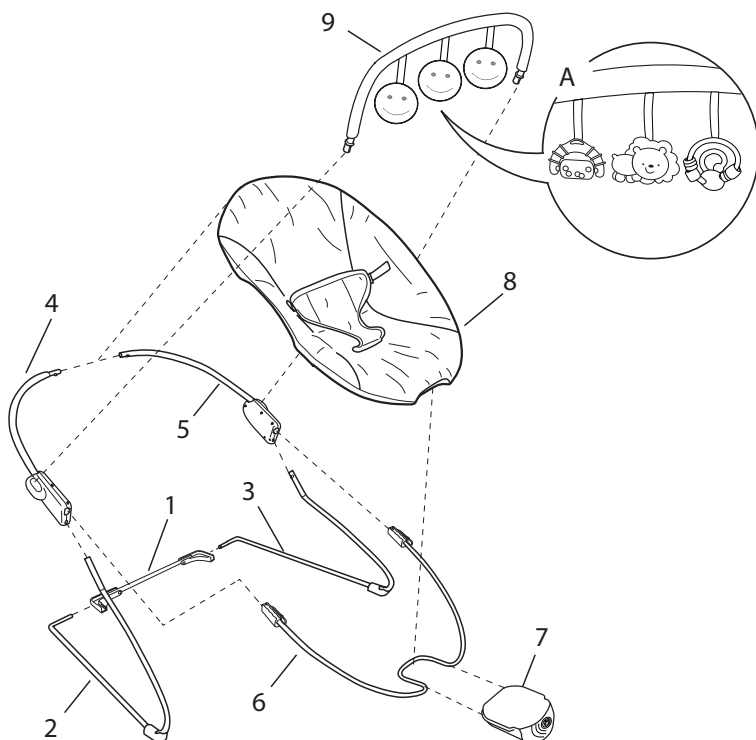
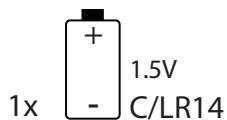


This symbol indicates that the product is not to be disposed of in household waste as batteries contain substances that can be damaging to the environment and health. Contact local authority for recycling & collection information.

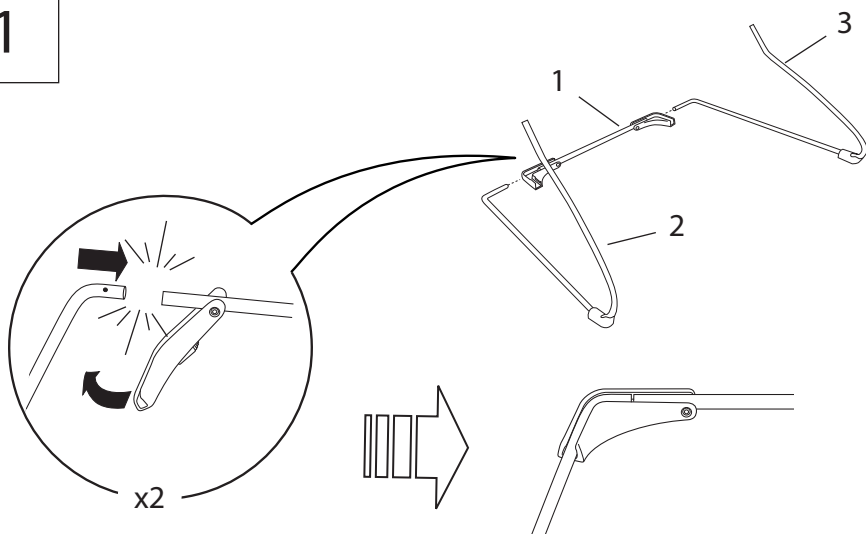
## Parts List and Drawing

No.	Qty.	Description
1	(1)	Base frame tube
2	(1)	Left base frame member
3	(1)	Right base frame member
4	(1)	Left backrest tube
5	(1)	Right backrest tube
6	(1)	Footrest wire
7	(1)	Vibration unit
8	(1)	Seat pad
9	(1)	Toy bar with toys

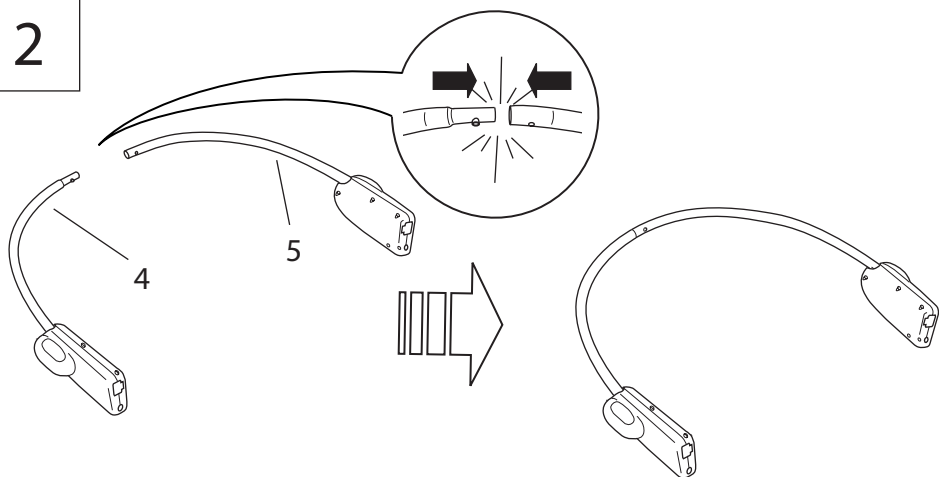
not included



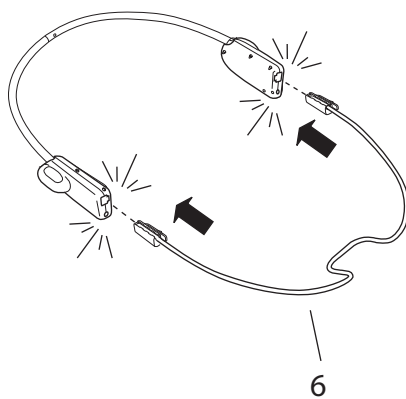
1



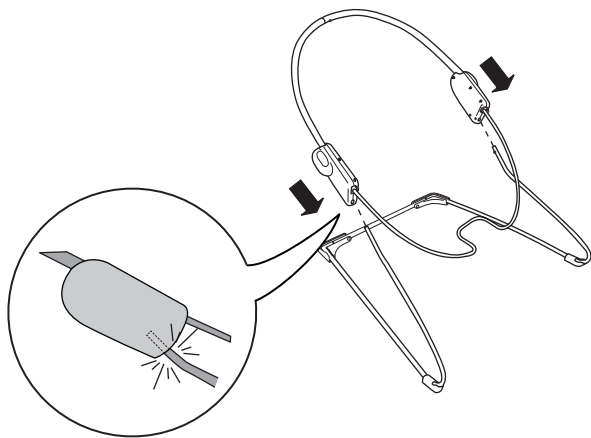
2



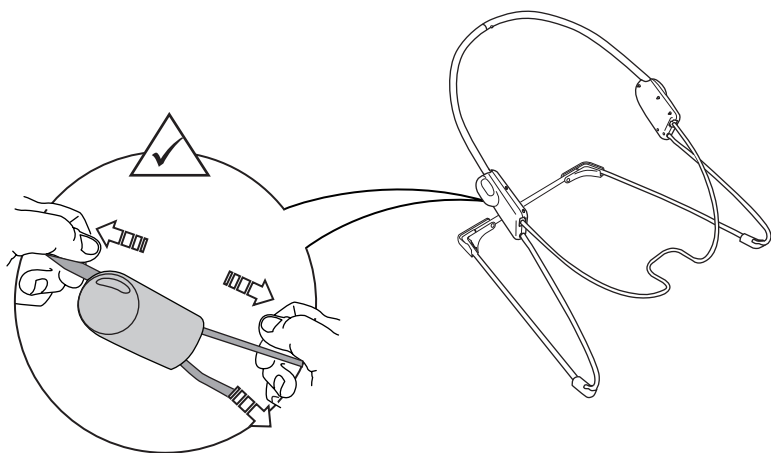
3



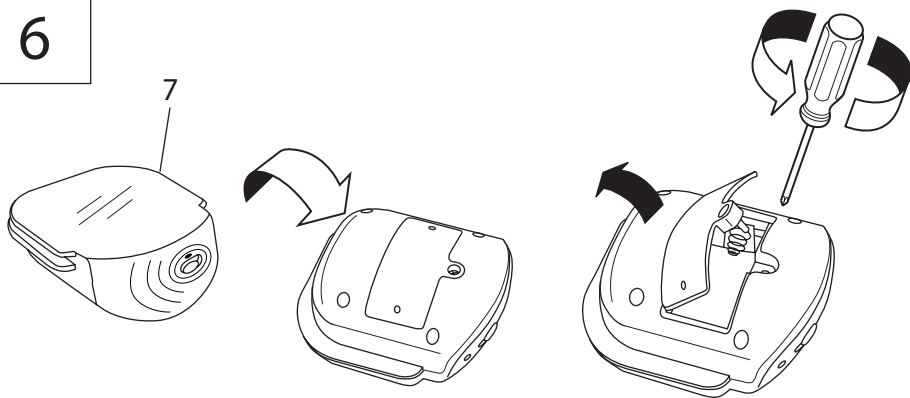
4



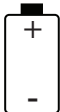
5

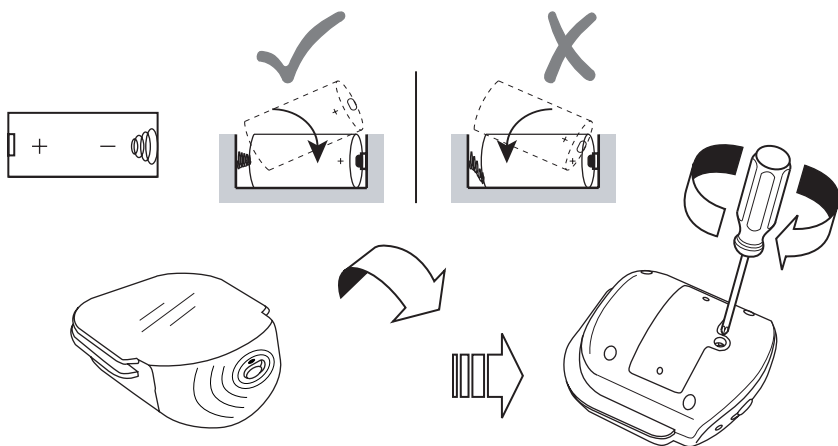


6

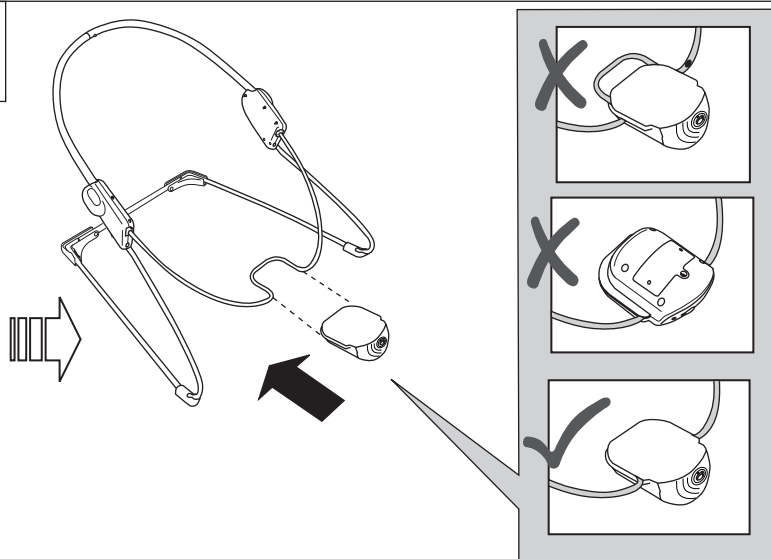


7

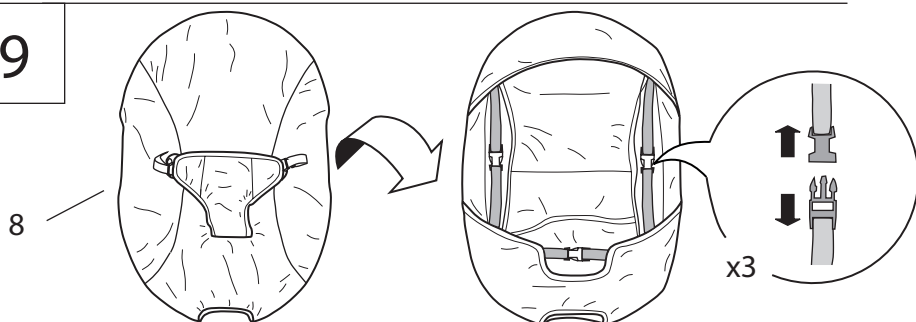
1x  1.5V  
C/LR14



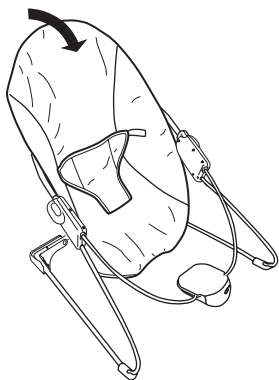
8



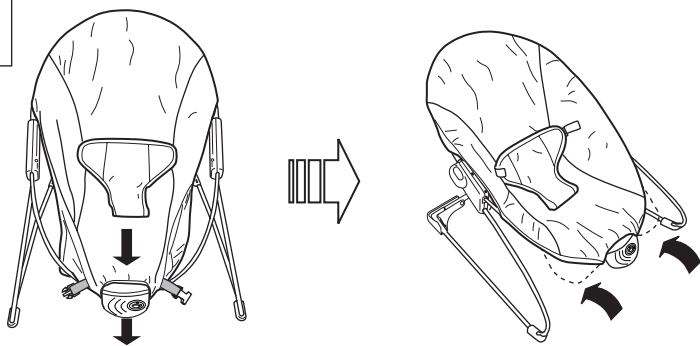
9



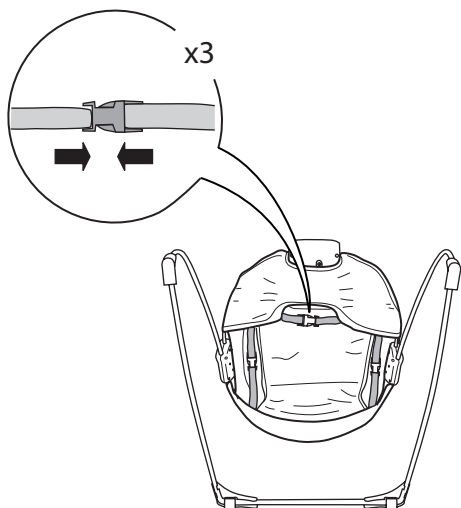
10



11

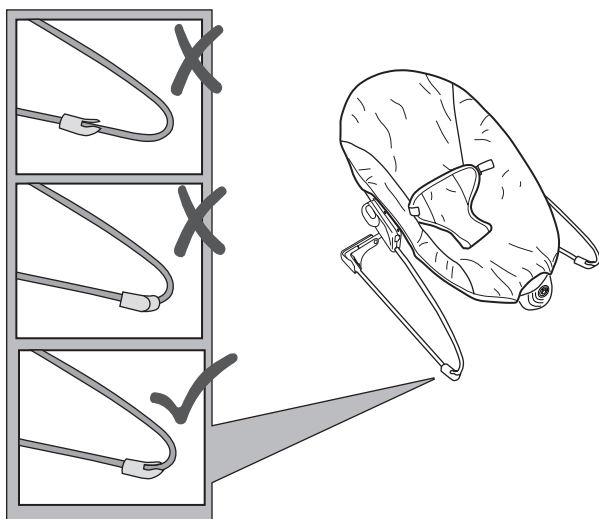


12

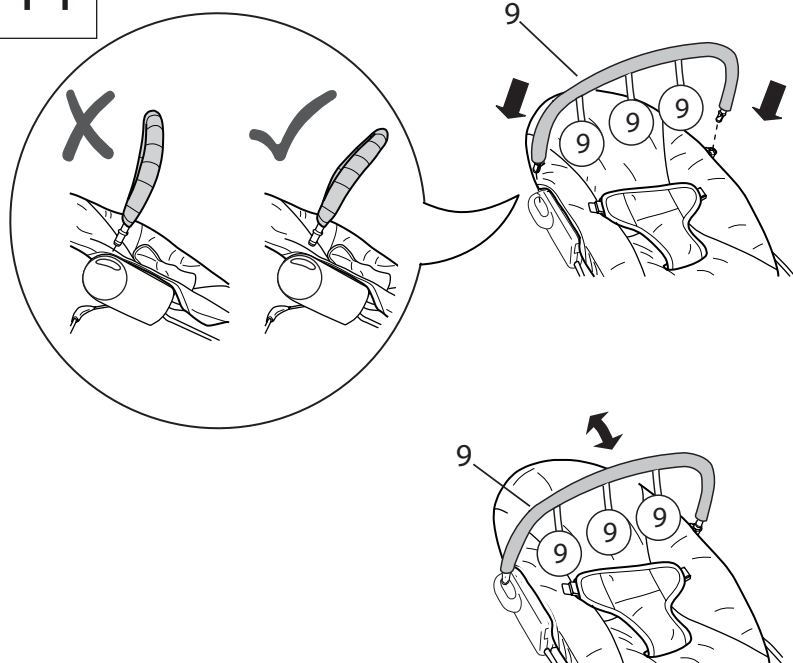




13

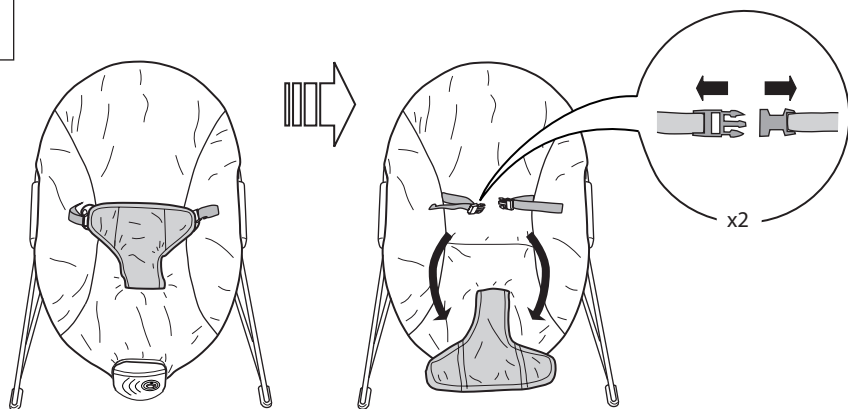


14

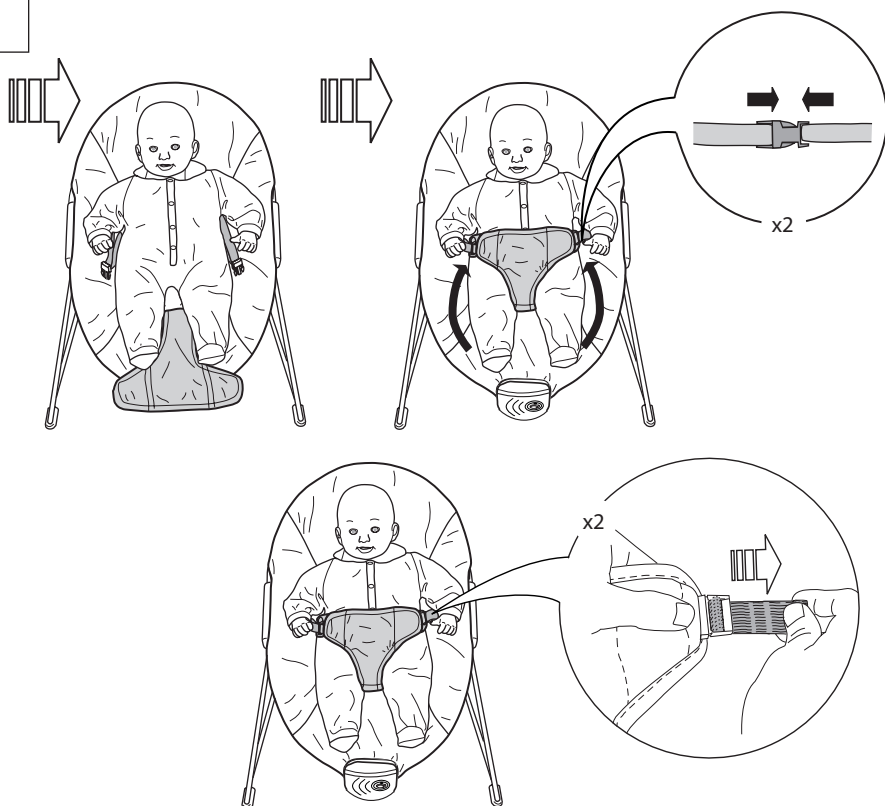


## Using the Seat Restraint

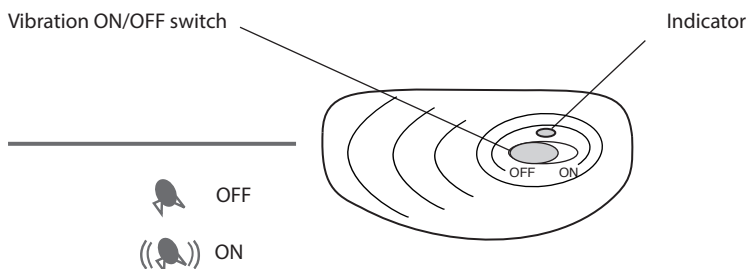
1



2



## Using the Vibration Unit



EN



Vibration calms and soothes the baby.

**To use the vibration function:** Slide the Vibration ON/OFF switch to the ON or OFF position.

## Care and Cleaning

EN

**Seat pad** – Can be cleaned by sponging with warm water and a mild detergent. (Do not immerse in water.) Never clean with abrasive, ammonia-based, bleach-based, or spirit-type cleaners. Seat pad must be dried thoroughly on a flat surface before using or storing. Do not spin or tumble dry.

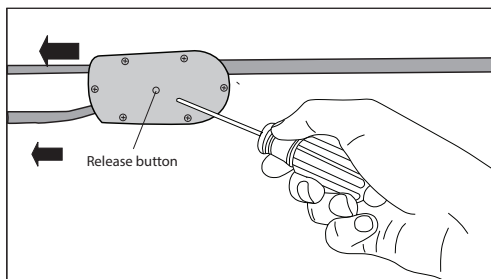
**Toy bar and toys** – Wipe clean with a damp cloth and mild soap. Air dry. Do not immerse in water.

**Frame** – Wipe the metal frame with soft, clean cloth and mild soap.



**CAUTION:** CARELESSNESS CAUSES FIRE. COVER(S) AND FILLING(S) HAVE BEEN TESTED TO ENSURE COMPLIANCE WITH THE FURNITURE AND FURNISHINGS (FIRE) (SAFETY) REGULATIONS 1988.

## Storage and Travel



EN

**To disassemble the bouncer for storage:**

Use a small Phillips screwdriver to depress the release button on the inside of each connecting hub on the bouncer.

Remove the footrest tube and base frame tubes from each connecting hub.

