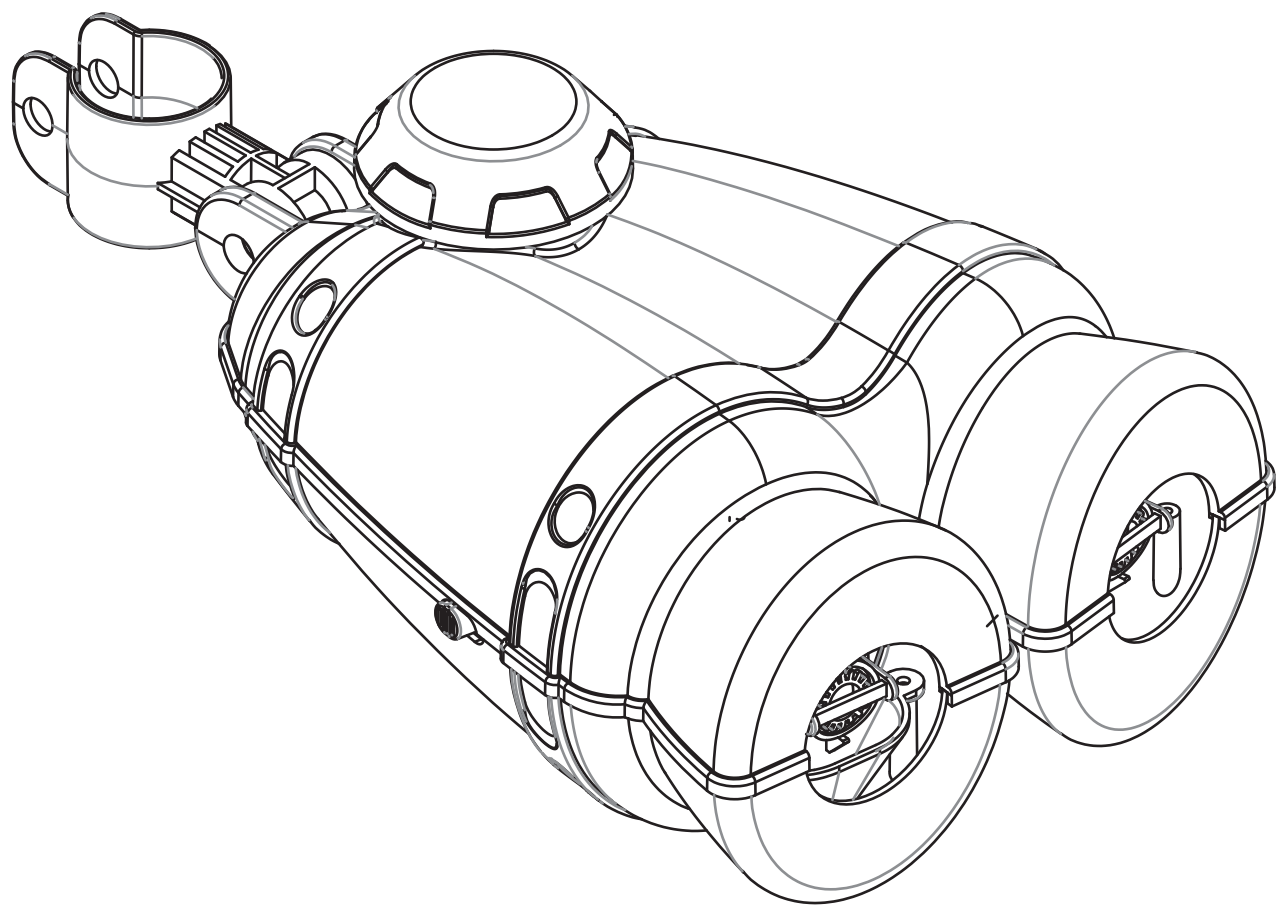


Item Description	Bubble Exhaust		
Item No.	1416197.ARG (22486003)		
Brand	Chad Valley		
Date created	25 Feb 2016		
File name	1416197.ARG_CV_BubbleExhaust_ML_06_14_1000x750_30_01		
File format	Illustrator CS5		
Version	1	Date	07 Apr 2016
Version		Date	
Version		Date	
Version		Date	
Version		Date	
By	Joey	Date	07 Apr 16

●
black

Bubble Exhaust

Assembly & User Instructions - Please keep for future reference 549/4965



Important

Age: 3+ years

Important – Please read these instructions fully before assembly or use

These instructions contain important information which will help you get the best from your product and ensure safe and correct assembly, use and maintenance.

Issue 1 - 22/02/16

Safety Information

Important – Please read these instructions fully before assembly or use

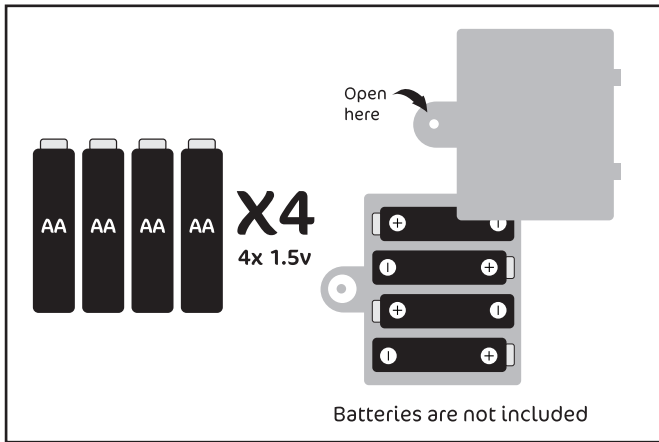
General safety

- Please read enclosed instructions before use.



- Warning! Not suitable for children under 36 months due to small parts - choking hazard.

- WARNING! Do not drink the bubble solution. Not intended for human consumption. This bubble solution may cause staining. Protect play area before use. During all creative activities we recommend that children wear overalls and/ or old clothes, and that you cover furnishings and carpets.



- Remove all packaging before giving to your child.

- Adult assembly required.

- Young children in play are unaware of potential dangers and hazards, therefore responsible adult supervision is essential. Parental supervision recommended.

- Please keep this instruction for reference since it contains important information.

BATTERY INSTALLATION & REPLACEMENT

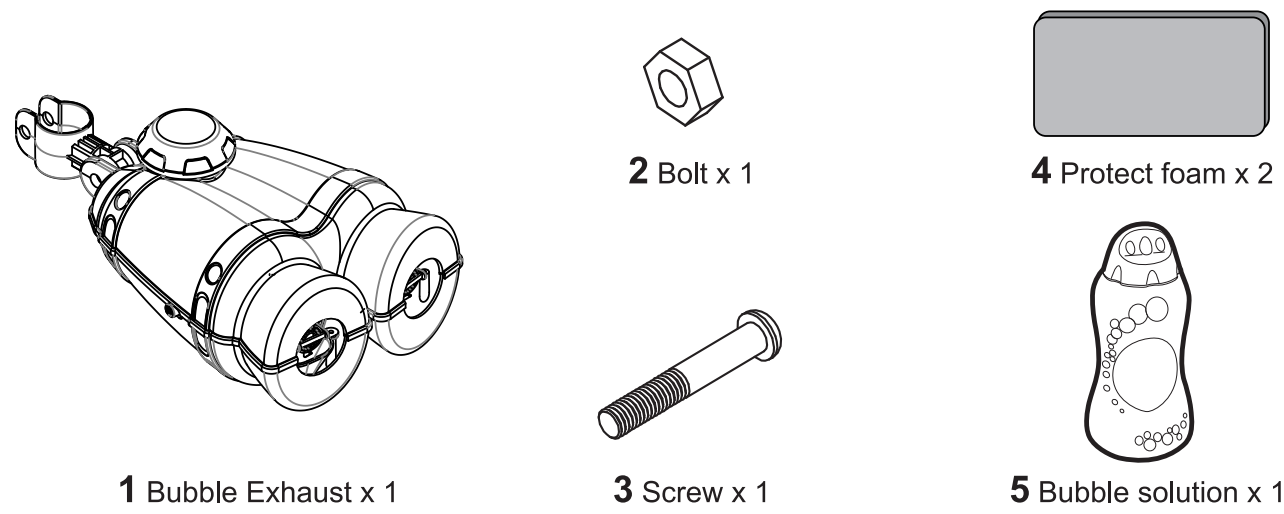
- Switch off the power of the unit.
- Loosen the screw with a screwdriver to open the battery compartment door at the back of the product.
- Insert / replace the new batteries in the proper direction indicated inside the battery compartment.
- Close the compartment and screw shut securely.

BATTERY SAFETY PRECAUTION

- Non-rechargeable batteries are not to be recharged.
- Rechargeable batteries are to be removed from the toy before being charged.
- Rechargeable batteries are only to be charged under adult supervision.
- Different types of batteries or new and used batteries are not to be mixed.
- Only batteries of the same or equivalent type as recommended are to be used.
- Batteries are to be inserted with the correct polarity.
- Exhausted batteries are to be removed from the toy.
- The supply terminals are not to be short-circuited.
- Do not dispose of batteries in fire; batteries may leak or explode.
- Batteries should be replaced by an adult.

Parts

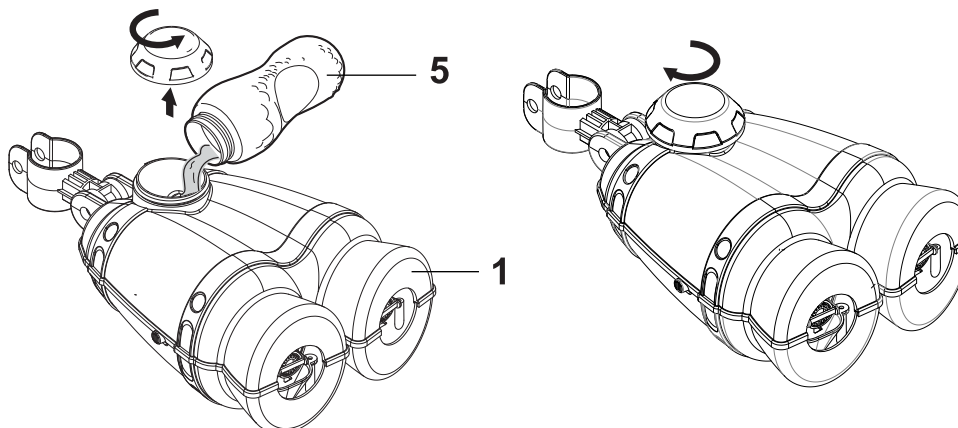
Please check you have all the parts and fittings listed below



Assembly Instructions

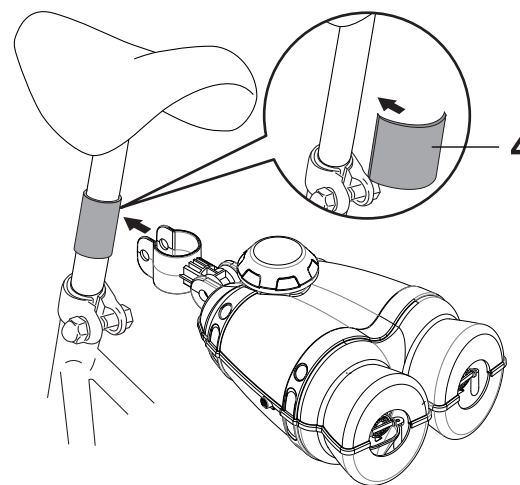
Step 1

Open the cap and fill in bubble solution. Close the cap after that.



Step 2

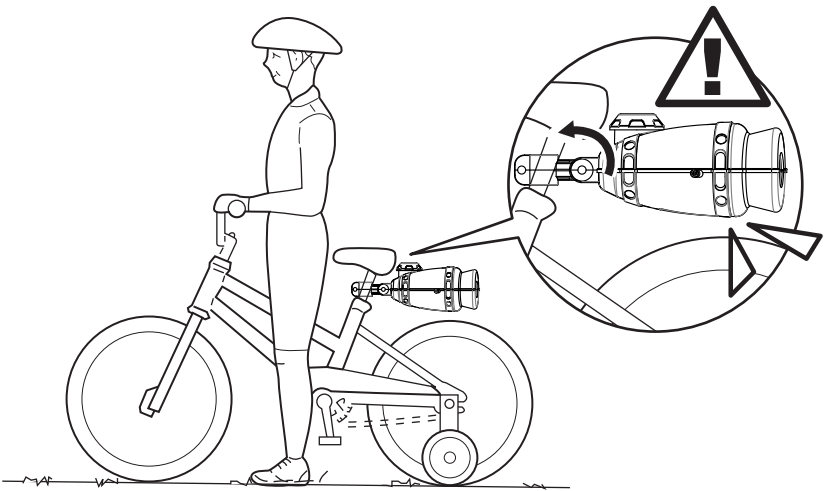
Fits onto the seat post with protect foam.



Assembly Instructions

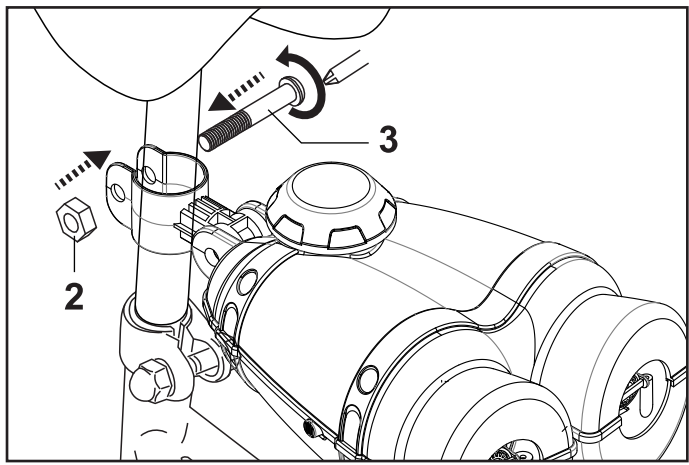
Step 3

Fix your angle.

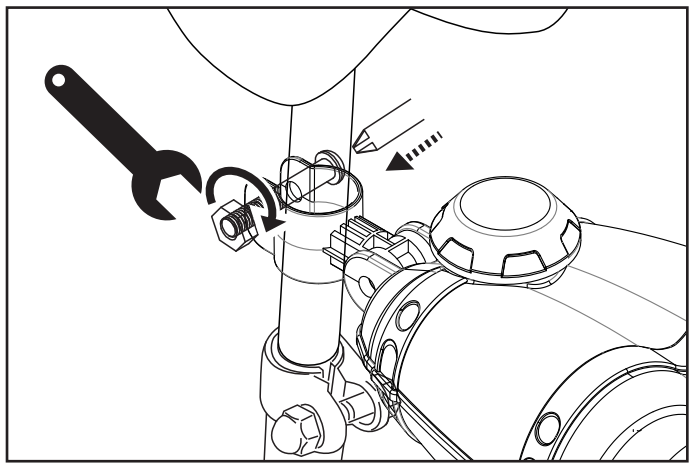


Step 4

Put on the screw after fixed the position.



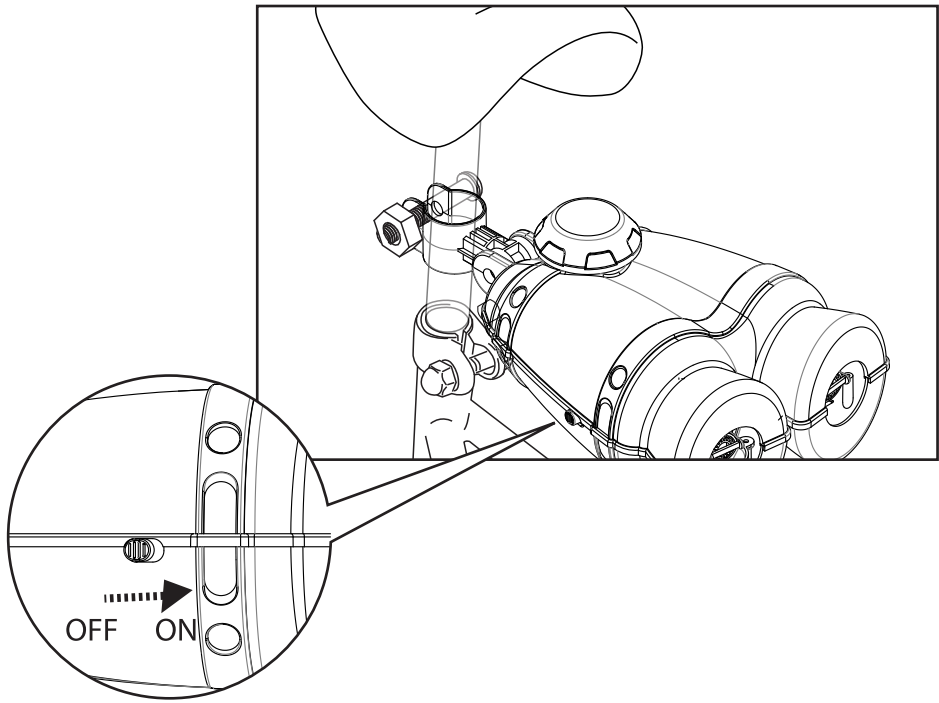
Fasten the screw to fix the bubble exhaust. (spanner not included.)



Assembly Instructions

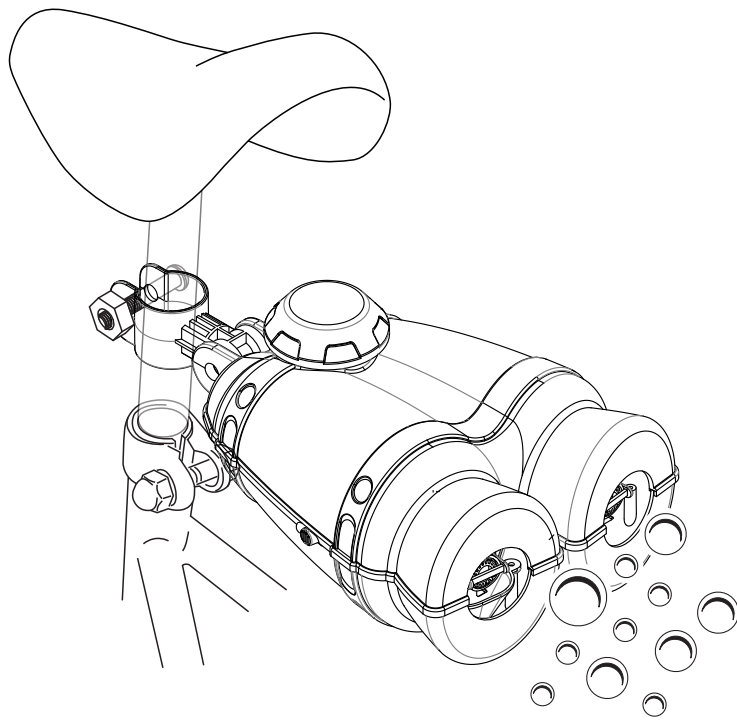
Step 5

Switch on the battery powered exhaust.



Step 5

Release a stream of bubbles as you cycle.



Care and Maintenance

General

- Wipe clean with damp cloth before storage.
- After use, rinse the tray with water and dry naturally.
- Inspect the product regularly for broken or damaged parts.
- Adults should check the product regularly.



Not suitable for children under 36 months. Choking hazard due to small parts.

If you need help or have damaged or missing parts, call the **Customer Helpline: +44 (0)1253 775 570**

Produced for Chad Valley Toys Argos Ltd. *Country of origin:* Made in China

Address: 489 - 499 Avebury Boulevard, Central Milton Keynes, MK9 2NW.

Disposal information



Electrical product waste should not be discarded with household waste. Please actively support us in conserving resources and protecting the environment by returning the non-working electrical products to an appropriate disposal/recycling centre (if available).