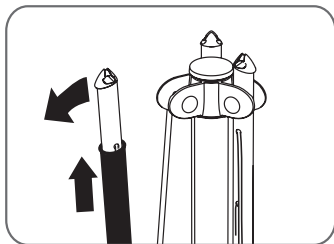
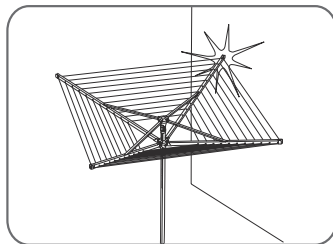




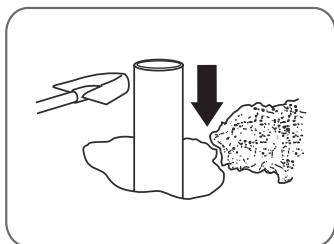
INSTALLATION INSTRUCTIONS:



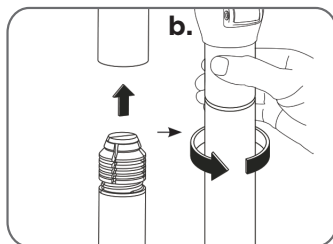
Remove the ground socket from the arm.



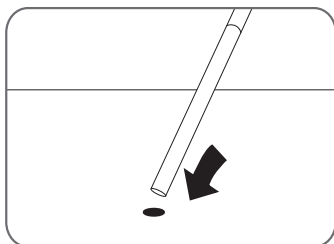
Find sufficient room for the airer to rotate completely.



Install the ground socket securely into the ground. **Note:** The ground socket should be installed using concrete (not included); a fence post mix is ideal. Make sure the top of the ground socket is flush with the ground.



- Line up the black collar pole to the base of the central pole.
- Grip the central pole firmly to prevent rotation (as shown). Push in and twist until it grips tight or visit www.minky.com to see the video.



Once the concrete has hardened, insert the airer assembly into the ground socket.

Important:

This item is heavy. Take care during installation. If in doubt, then a professional tradesperson should be consulted. This is not a toy. Children should not play unsupervised near this product. When not in use store safely out of reach of children. Ensure support for the airer is securely fixed in the ground and supports the airer in an upright position. Load and unload evenly. Take care when opening and closing the item to avoid trapping fingers. Maximum load 45kg.