

Fantasy Island

Assembly & User Instructions - Please keep for future reference

5224355



Important

Age: 9 Months +

Important – Please read these instructions fully before assembly or use

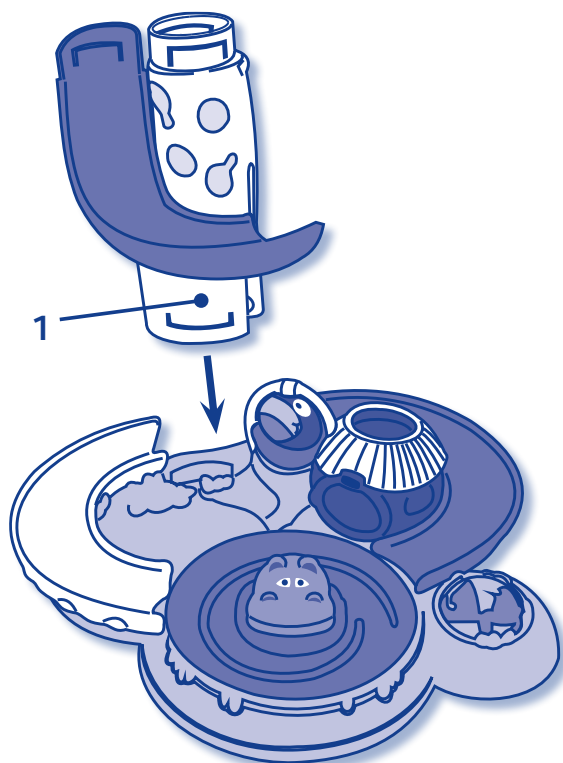
These instructions contain important information which will help you get the best from your product and ensure safe and correct assembly, use and maintenance.

If you need help or have damaged or missing parts, call the **Customer Helpline: +44 (0) 1253775570**

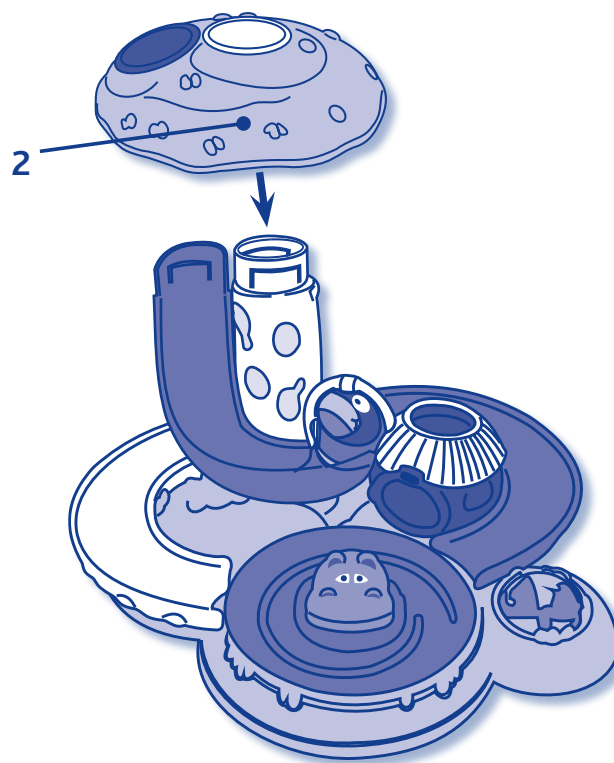
Parts

If you have damaged or missing parts,
call the **Customer Helpline: +44 (0) 1253775570**

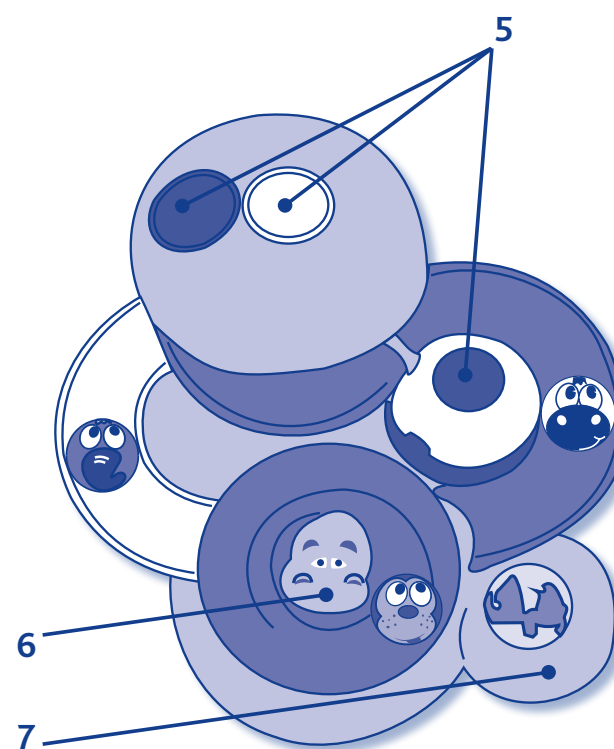
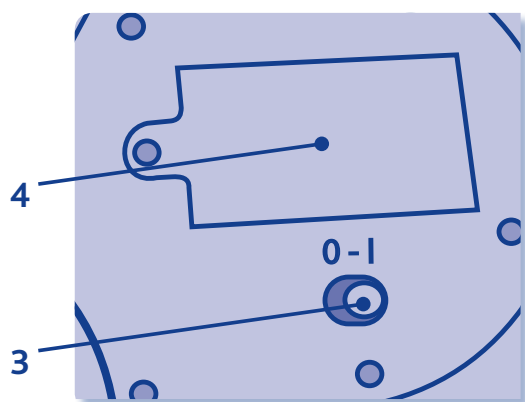
A



B



C



User Instructions

Important – Please read these instructions fully before assembly or use

Age: 9 Months +

Please read these instructions carefully before using the toy and keep for future reference.

This toy car runs on 2 alkaline 1.5 Volt “AA” batteries. Batteries are not included.

WARNINGS

For your child’s safety: ATTENTION!

Before using the product remove and dispose of any plastic bags and any other packaging (e.g. fasteners and fixing ties etc) and keep them out of reach of children. Suffocation hazard.

- Check the product regularly for signs of wear and damage and to ensure that it is assembled correctly. Should any part be visibly damaged, do not use the toy and keep it out of children’s reach.

Using this toy in very low temperatures can cause the plastic material to lose its elasticity and become fragile; should this happen, do not allow the child to use it and store it

away in a warm suitable environment.

- This product must only be assembled by adults only.
- Do not use the toy until it has been fully assembled and checked.
- Do not use this toy in any mode other than those illustrated in the manual.
- This toy should only be used under the supervision of an adult.
- Do not leave the toy near heat sources or in direct sunlight for long periods of time as this could cause the plastic elements to deteriorate.

ASSEMBLY

After removing all the elements from the box, follow these simple instructions to assemble the product.

1. Insert the tree trunk (1) into the base of the toy, as seen in diagram A.
2. Now insert the top of the tree (2) onto the trunk, as

seen in diagram B, making sure the colours on the holes match the colours on the slides below.

This toy can not be disassembled once you have completed to assembly procedure.

TECHNICAL FEATURES

Diag. C-3 ON/OFF lever switch (I / O).
Diag. C-4 battery compartment cover.
Diag. C-5 3 other chutes for the balls to roll down.
Diag. C-6 hippopotamus: when pressed it plays music and

sound effects and the pond rotates making the balls spin round.
Diag. C-7 spinning ball.

INTRODUCTION TO THE TOY

An activity centre where they can play with three entertaining spinning balls, decorated with animals that children can place on the three different chutes and let them slide into the rotating pond. It has a number of different

activities: a roller, a rocking toucan and a hippopotamus that, when pressed, spins the balls around and activates some great entertaining music.

HOW TO USE THE TOY

Switch the toy ON by pushing the ON /OFF lever switch (Diag. C-3) to I. In order to avoid using up the batteries for

no reason, it is recommended to turn off the toy by moving the ON/OFF switch to O (diag. C-3) when not in use.

User Instructions

FITTING AND/OR REPLACING BATTERIES - ATTENTION!

- Batteries must only be replaced by an adult.

To replace batteries:

1. Use a screwdriver to loosen the battery compartment cover screw.
 2. Remove the spent batteries and fit new ones making sure they are fitted with their poles in the right direction (as indicated on the product).
 3. Replace the cover and tighten the screw.
- To replace the batteries: loosen the screw on the battery compartment cover (Diag. C-4) with a screwdriver and open the cover. Then remove the spent batteries and fit new ones, ensuring that they have been fitted with correct polarity (as shown on the product), close the battery cover, and tighten the screw.
 - Only use alkaline batteries of the same type or equivalent to the type recommended for the correct function of this product.
 - Never mix alkaline, standard (zinc-carbon) or rechargeable (nickel-cadmium) batteries.
 - Never mix new and old batteries.
 - Always keep batteries and tools out of the reach of children.
 - Do not short-circuit the battery terminals.

- Always remove spent batteries from the product to avoid the danger of leakage from the battery damaging the product.
- Always remove the batteries if the product will not be used for a long period of time
- Remove the batteries from the toy before disposing of the product.
- Do not burn or dispose of old batteries into the environment; dispose of them at an appropriate differentiated collection point.
- If the batteries happen to leak liquid, replace them immediately, making sure you clean the compartment beforehand; wash your hands thoroughly if you come into contact with any such liquid.
- Do not attempt to recharge non-rechargeable batteries: they might explode.
- The use of rechargeable batteries is not recommended as the toy may not work properly.
- If using rechargeable batteries, remove them from the toy before recharging them; batteries must always be recharged under adult supervision.

This product is not designed to be used with replaceable lithium batteries. ATTENTION Improper use could be hazardous.

CLEANING, CARE & MAINTENANCE OF THE TOY

- The toy should be cleaned using a soft, dry or moistened fabric or microfibre cloth to avoid damage to its electric circuit. Do not use detergents or solvents.
- Protect the toy against impact, heat, dust, sand, humidity and water.

Disposal information



This product complies with the Directive 2012/19/EU.

The crossed bin symbol on the appliance indicates that the product, at the end of its life, must be disposed of separately from domestic waste, either by taking it to a separate waste disposal site for electric and electronic appliances or by returning it to your dealer when you buy another similar appliance.

The user is responsible for taking the appliance to a special waste disposal site at the end of its life. If the disused appliance is collected correctly as separate waste, it can be recycled, treated and disposed of ecologically; this avoids a negative impact on both the environment and health, and contributes towards the recycling of the product's materials. For further information regarding the waste disposal services available, contact your local waste disposal agency or the shop where you bought the appliance.



46 069005 000 020_1616

Made in China

If you need help or have damaged or missing parts, call the **Customer Helpline: +44 (0) 1253775570**
Produced for Chad Valley Toys Argos Ltd. Country of origin: Made in China
Address: 489-499 Averbury Boulevard, Central Milton Keynes, MK9 3NW.