

SPECIFICATION

Input 100 - 240v AC 50/60Hz
Output 24V dc 500mA max. Centre pin positive



Read these instructions carefully before use and then retain for future use.



This product is for indoor use only.



This product complies with current EU product legislation.



Socket Input centre pin positive.



This product is not suitable for use in the bathroom, it is NOT water resistant.

Humidifier capacity: 100ml - approx 9 hour run time.

CUSTOMER CARE

If you have any questions, or if you experience any difficulties please call our Careline on: **01242 702345** or email us at: **online@riobeauty.com**

To reorder additional accessories, please visit **www.riobeauty.com** or contact your local distributor.

GUARANTEE

To register your two year guarantee online, visit: **www.riobeauty.com/warranty_online.htm**

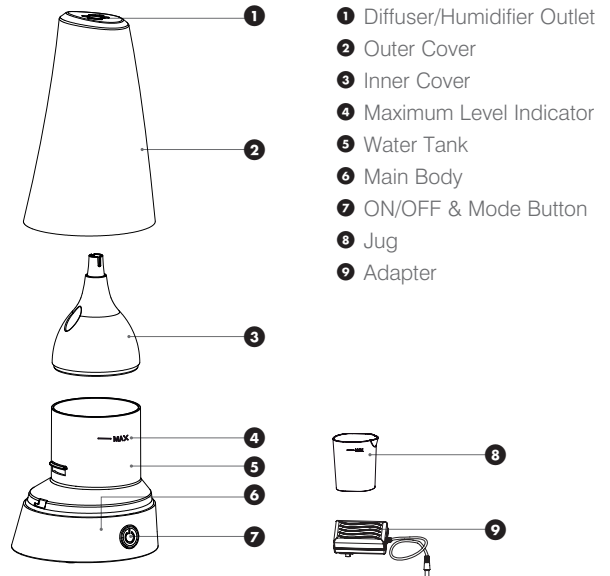
DISPOSAL



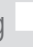
The Waste of Electrical and Electronic Equipment (WEEE) Directive (2012/19/EU) has been put in place to recycle products using best available recovery and recycling techniques to minimise the impact on the environment, treat any hazardous substances and avoid the increasing landfill. This product is classed as Electrical or Electronic equipment so please ensure that at the end of the life of this product it is disposed of in the correct manner in accordance with local authority requirements. It must NOT be disposed of with household waste.

AROMA DIFFUSER, HUMIDIFIER AND NIGHT-LIGHT

YOUR UNIT



WARNINGS

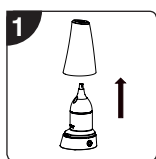
- **Please read all instructions thoroughly and retain for future reference.**
- This appliance can be used by children aged 8 years and above and persons with reduced physical, sensory or mental capabilities or lack of experience and knowledge if they have been given supervision or instruction concerning the use of the appliance in a safe way and understand the hazards involved. Children shall not play with the appliance. Cleaning and maintenance shall not be made by children without supervision.
- This appliance is only to be used with the mains adapter supplied.
- This appliance must only be supplied at safety extra low voltage corresponding to the marking  on the appliance. If any part of the mains adapter or cord are damaged, discontinue use. Contact Customer Care to arrange a replacement.

WARNINGS

- Do not immerse it in water. Do NOT use solvents or abrasive cleaners.
- The appliance is designed to be used with 100% natural essential oils.
- For external use only.
- Do NOT use this product if it is not working properly, or if it has been dropped or damaged.
- Place on a flat surface about 60cm away from the floor and 10cm away from the wall. DO NOT place on wooden furniture or surfaces which can be damaged by water.
- Ensure the unit is off and disconnected from the mains supply when filling the water and cleaning the water tank.
- Keep out of reach from children and pets.
- Keep away from any appliances which are sensitive to water to avoid accidents.
- Always remove water and wipe clean the water tank when the diffuser is not in use.

GETTING STARTED

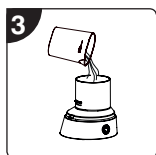
If using as a light or night light, simply plug into mains supply and press the mode button 2 times.



Lift off the outer cover.



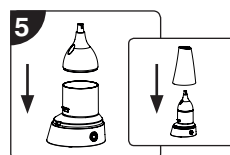
Lift off the inner cover.



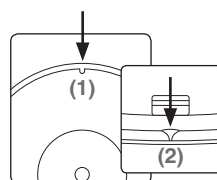
Use the measuring cup to add water, DO NOT fill beyond the MAX level mark indicated.
Note: Do not fill with hot water.



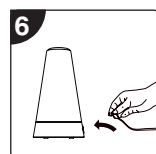
Optional: Add 3-5 drops of essential oil.



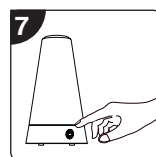
Replace the inner cover and outer cover.



Important - Ensure the small rib inside the outer cover (1) aligns with the groove on the base (2) and securely clicks into place.



Connect the power adapter and plug into the mains supply.



The mode button switches the unit on and allows each function to be selected.

1st press: Diffuser/Humidifier **ON**.

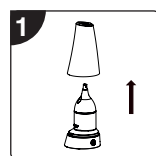
Note: If there is no water, a red light will flash 3 times and the unit will switch **OFF**.

2nd press: Diffuser/Humidifier and lights **ON**.

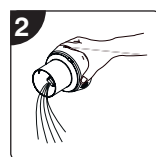
Note: If there is no water or when the water runs out, the diffuser/humidifier will switch **OFF**. The lights will stay ON until unit is turned **OFF**.

3rd press: Turns the unit **OFF**

AFTER EACH USE



Turn OFF and unplug the unit from the electrical socket. Then lift off the top cover and inner cover.



Drain and rinse the water tank thoroughly. Wipe clean and dry with a clean soft cloth or paper towel.

IMPORTANT INFORMATION

- Misuse of this product can cause harm.
- This product must only be used for its intended purpose as described in this user guide.
- There are no user serviceable parts inside the unit.
- Clean the water tank after each use. Essential oils are not soluble in water and tend to remain in the water tank.
- If you feel unwell while using the product, turn off the device immediately.