

ReadyBed™

My First ReadyBed™

18mos+

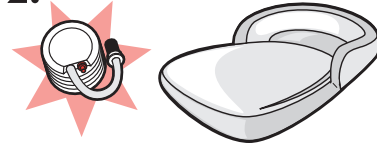
INFLATION

1.



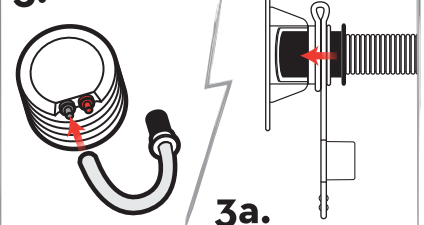
Ensure the floor area is clear & free from objects. Lay the bed out flat on the floor.

2.



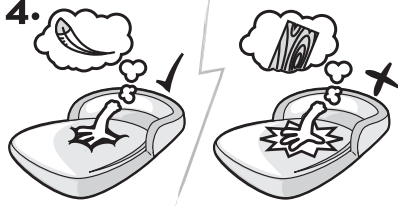
Your bed can be inflated using the pump provided.

3.



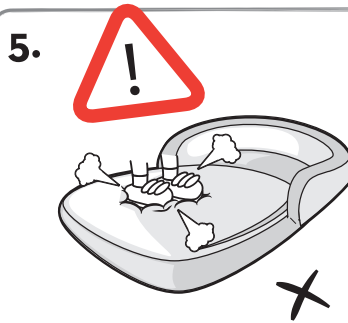
3. Add flex hose to air (blue) outlet.
3a. Insert adaptor into valve. Only remove the top stopper for inflation. Inflate until mattress is firm but not hard.

4.



4. Under inflation can give a better night's sleep, if the bed is too hard it could cause some discomfort. Do not over inflate. IMPORTANT! The stopper must be fully inserted once the product has been inflated, to avoid any leakage.

5.



When not in use deflate and store in the bag, for temporary storage keep upright against a wall and out of children's way.

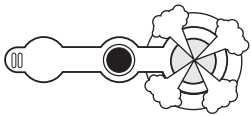


WARNING Over inflation could cause damage to the mattress seams

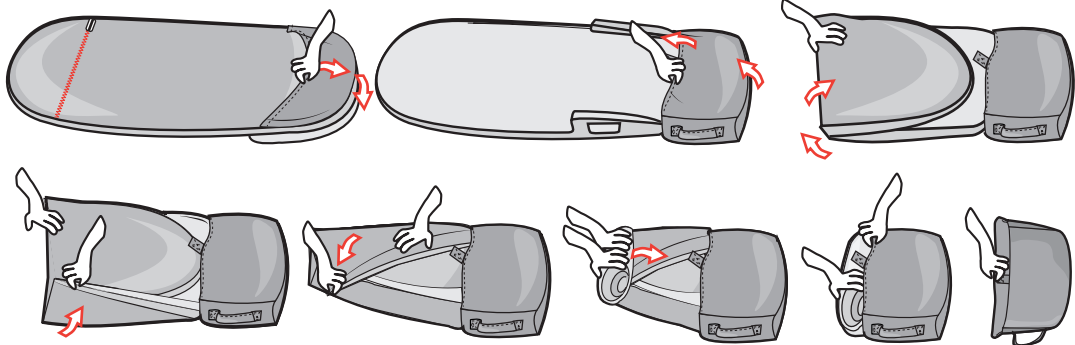
WARNING Do not stand or jump on the bed



DEFLATION



Remove both stoppers for quick deflation



Store the ReadyBed™ in the integral bag attached to the bed (follow diagrams).



WARNING:

ADULT ASSEMBLY REQUIRED -

Keep away from children until fully assembled.

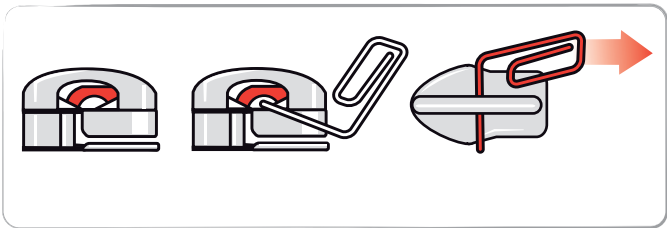
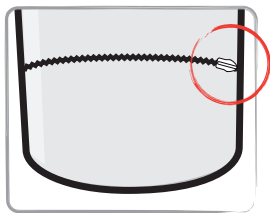
REF: 401AMN01CMMMP

REF: 401GNI01CMMMP

Made in Dongguan, China.

INS.401-MMP 10/07/17

IMPORTANT! Instructions for removing mattress:



1. Child Proof zip to be opened by adult only.
2. To unlock zip, insert paper clip or similar into zip opener to release lock.
3. Pull zip to open. Ensure paper clip is removed before use. Repeat this procedure to close zip.



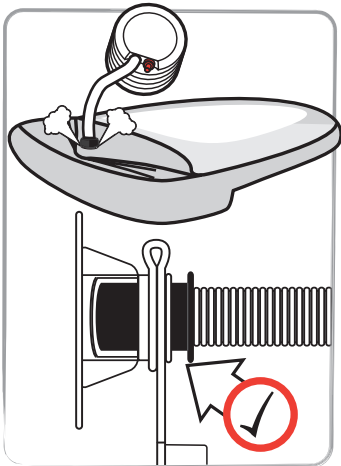
WASHING INSTRUCTIONS

- Remove inflatable mattress before washing.
- Wipe inflatable mattress clean with a damp cloth only, if necessary.
- Wash separately.
- We recommend that this item is washed before first use.
- Machine wash warm.
- Do not use bleach.
- Do not tumble dry.
- Line dry or hang to dry.
- Do not iron.
- Ensure sleeping bag is completely dry before storage.

TROUBLE SHOOTING



The air is escaping whilst I am inflating the mattress.



Ensure the adaptor has an air tight fit on the valve.

The mattress is deflating soon after I have completed inflation.



The stopper must be fully inserted once the product has been inflated

The mattress seems to deflate slightly after some time.



As the air inside the mattress cools to room temperature, the pressure will drop inside the mattress making it seem like the mattress has a puncture. The mattress will require regular top ups of air due to changes in temperature.

The mattress is deflating completely.



Remove the mattress from the cover and inflate the mattress again to check for any obvious punctures.

- Recommended for children over 18 months. • Warning! Keep away from fire. • Adult inflation / deflation required.
- Remove all packaging ties before giving to your child. • Do not jump or bounce on the bed, as this will result in splitting the seams of the internal mattress. • Use bed on the floor. Do not place on raised surfaces. • Remove all sharp objects from area where the bed will be set up and used. Protruding objects may puncture the mattress.
- Do not place bed near fires or other sources of heat such as radiators, open or electric fires. • This is not an aquatic product. Do not use in water. • CAUTION! The mattress is not a life saving device. • Not designed or intended for use in play.