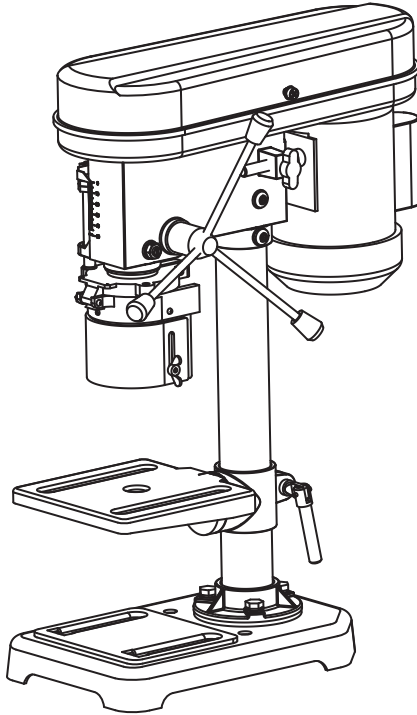


# GUILD

## 350W 13mm Drill Press

Instruction Manual

BDP13G



# GUILD

### After Sales Support

UK/Ireland 0333 3201989  
Help@guildpowertools.co.uk

**Important** - Please read these instructions fully before operating or maintaining your Guild drill press

These instructions contain important information that will help you get the best from your Guild drill press, ensuring it remains safe to operate.

If you need help or have damaged or missing parts, call the Customer Helpline on 0333 3201989

# Contents

Safety Information .....	3
In The Box .....	6
Accessories .....	6
Assembly Instructions .....	7
Operating Instructions .....	10
Working Hints For Your Drill Press .....	11
Maintenance .....	12
Technical Data .....	12
Environmental Protection .....	13
Guarantee .....	13
Declaration of Conformity .....	13
Plug Replacement (Uk & Ireland Only) .....	14

# Safety Information

**Important** - Please read these instructions fully before starting assembly

## Warning Symbols

The following warning symbols appear throughout this assembly manual and indicate the appropriate safety measures you should take when assembling and operating the drill press.



To reduce the risk of injury, Please read the instruction manual



Warning



Wear ear protection



Wear eye protection



Wear dust mask



Waste electrical products must not be disposed of with household waste. Please recycle where facilities exist. Check with your local authorities or retailer for recycling advice.

# Safety Information

**Important** - Please read these instructions fully before starting assembly

## Safety Instructions



**“WARNING!** When using electric tools basic safety precautions should always be followed to reduce the risk of fire, electric shock and personal injury including the following.

Read all these instructions before attempting to operate this product and save these instructions”.

### Maintenance and Servicing

Remove the plug before carrying out any adjustment, servicing or maintenance

### Safe operation

- 1 - Keep work area clear
  - Cluttered areas and benches invite injuries.
- 2 - Consider work area environment
  - Do not expose tools to rain.
  - Do not use tools in damp or wet locations.
  - Keep work area well lit.
  - Do not use tools in the presence of flammable liquids or gases.
- 3 - Guard against electric shock
  - Avoid body contact with earthed or grounded surfaces (e.g. pipes, radiators, ranges, refrigerators).
- 4 - Keep other persons away
  - Do not let persons, especially children, not involved in the work touch the tool or the extension cord and keep them away from the work area
- 5 - Store idle tools
  - When not in use, tools should be stored in a dry locked-up place, out of reach of children.
- 6 - Do not force the tool
  - It will do the job better and safer at the rate for which it was intended.
- 7 - Use the right tool
  - Do not force small tools to do the job of a heavy duty tool.
  - Do not use tools for purposes not intended; for example do not use circular saws to cut tree limbs or logs.
- 8 - Dress properly
  - Do not wear loose clothing or jewellery, they can be caught in moving parts.
  - Non-skid footwear is recommended when working outdoors.
  - Wear protective hair covering to contain long hair.
- 9 - Use protective equipment
  - Use safety glasses.
  - Use face or dust mask if working operations create dust.
- 10 - Connect dust extraction equipment
  - If the tool is provided for the connection of dust extraction and collecting equipment, ensure these are connected and properly used.
- 11 - Do not abuse the cord
  - Never yank the cord to disconnect it from the socket Keep the cord away from heat, oil and sharp edges.
- 12 - Secure work
  - Where possible use damps or a vice to hold the work. It is safer than using your hand.
- 13 - Do not overreach

# Safety Information

**Important** - Please read these instructions fully before starting assembly

## Safety Instructions

- Keep proper footing and balance at all times.
- 14 - Maintain tools with care
  - Keep cutting tools sharp and clean for better and safer performance.
  - Follow instruction for lubricating and changing accessories.
  - Inspect tool cords periodically and if damaged have them repaired by an authorized service facility.
  - Inspect extension cords periodically and replace if damaged.
  - Keep handles dry, clean and free from oil and grease.
- 15 - Disconnect tools
  - When not in use, before servicing and when changing accessories such as blades, bits and cutters, disconnect tools from the power supply.
- 16 - Remove adjusting keys and wrenches
  - Form the habit of checking to see that keys and adjusting wrenches are removed from the tool before turning it on.
- 17 - Avoid unintentional starting
  - Ensure switch is in "off" position when plugging in
- 18 - Use outdoor extension leads
  - When the tool is used outdoors, use only extension cords intended for outdoor use and so marked.
- 19 - Stay alert
  - Watch what you are doing, use common sense and do not operate the tool when you are tired.
- 20 - Check damaged parts
  - Before further use of tool, it should be carefully checked to determine that it will operate properly and perform its intended function.
  - Check for alignment of moving parts, binding of moving parts, breakage of parts, mounting and any other conditions that may affect its operation.
  - A guard or other part that is damaged should be properly repaired or replaced by an authorized service centre unless otherwise indicated in this instruction manual.
  - Have defective switches replaced by an authorized service centre.
  - Do not use the tool if the switch does not turn it on and off.
- 21 - Warning
  - The use of any accessory or attachment other than one recommended in this instruction manual may present a risk of personal injury.
- 22 - Have your tool repaired by a qualified person
  - This electric tool complies with the relevant safety rules. Repairs should only be carried out by qualified persons using original spare parts, otherwise this may result in considerable danger to the user.
- 23 - If the replacement of the supply cord is necessary, this has to be done by the manufacturer or his agent in order to avoid a safety hazard.
- 24 - For tools intended to be connected to a water supply:
  - Replacement of the plug or the supply cord shall always be carried out by the manufacturer of the tool or his service organisation,
  - Keep water clear off the electrical parts of the tool and away from persons in the working area.

# In The Box

## Parts

- 1 Allen keys
- 2 Chuck key
- 3 Handles
- 4 Bolts and washers
- 5 Support column
- 6 Adjustable guard
- 7 Adjustable tilting table
- 8 Headstock/motor assembly
- 9 Chuck
- 10 Base plate
- 11 Screws (SEE FIG E)
- 12 Guard securing screw x 3 (SEE FIG F)
- 13 Locking nut (SEE FIG H)
- 14 Spindle alignment adjustment screw (SEE FIG H)
- 15 Belt cover securing screw (SEE FIG I)
- 16 Tension adjustor screw (SEE FIG J)
- 17 Motor securing bolts (SEE FIG K)
- 18 Table securing bolt (SEE FIG N)
- 19 Depth stop locking nuts, pointer and scale (SEE FIG P)
- 20 Switch "OFF" (SEE FIG Q)
- 21 Switch "ON" (SEE FIG Q)
- 22 Safety interlock switch (SEE FIG L)

# Accessories

Chuck key  
Allen key

1pc  
2pc

# Assembly Instructions



**NOTE:** Before using the tool, read the instruction book carefully.

## Intended Use

This tool is intended for drilling in wood, metal and plastic.

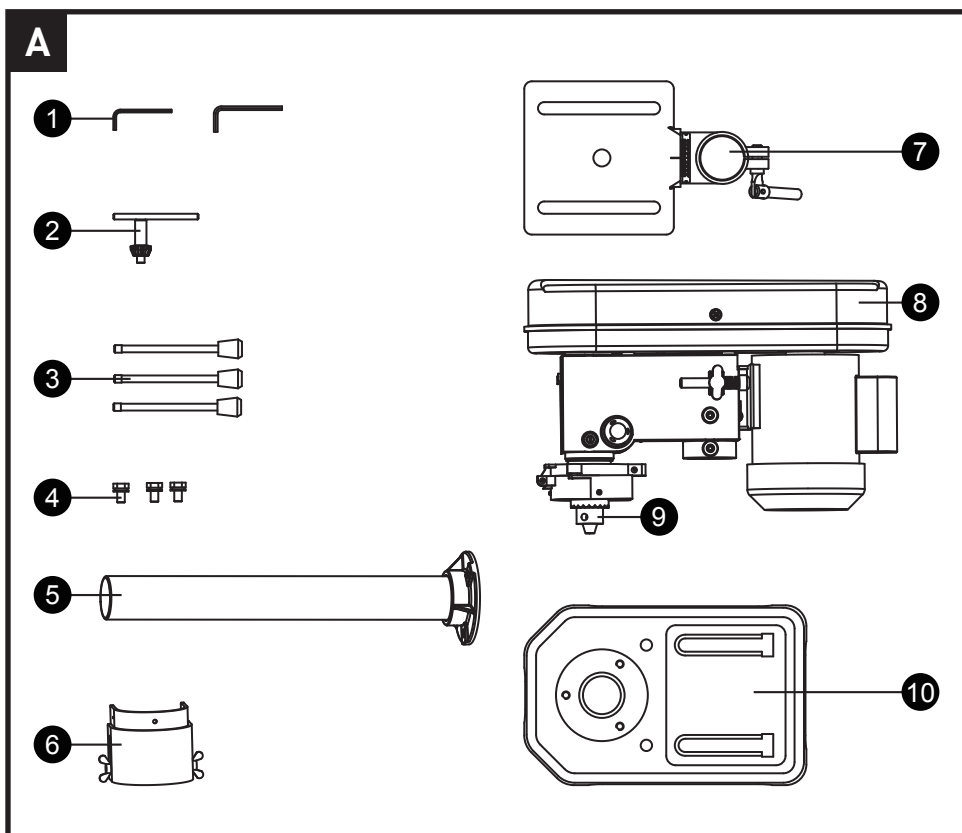
## 1. UNPACKING YOUR TOOL

Carefully unpack all of the contents and lay them out on the floor (SEE FIG A). NB To prevent corrosion some of the parts have been coated in a fine layer of oil, it is advised to assemble this product in a working area to prevent damage to upholstery or carpets. Check contents against check list below. Retain packaging until all parts are accounted for and assembly has been completed.

Lift out base plate and remove protective paper and place on workbench.

Inside the small box you will find the chuck, three handles, three set bolts, three washers, two allen keys and chuck key. Place on workbench.

Lift worktable out and remove protective paper. Put on workbench. Remove headstock and motor assembly and put on workbench. Remove column and plastic guard. Put plastic guard away for time being.



# Assembly Instructions

## 2. ASSEMBLY

Take base plate and select a suitable place on workbench for mounting (SEE FIG B). Be aware of table legs and anything, which might reduce access to underneath: Locate the two mounting holes. Select suitable length bolts, washers and nuts (not supplied). Using base as a template drill two holes through the workbench. Bolt the base plate to the bench. Do not overtighten as this could crack the cast base. Take the protective paper off the column. Align with the three threaded holes on the base plate. (SEE FIG C) Secure with the three bolt sets supplied. Again do not use excessive torque.

Slide the adjustable height work table over the column.

Secure midway with the clamping lever. (SEE FIG D)

**⚠ CAUTION:** The head stock and motor assembly is heavy and may require two person handling.

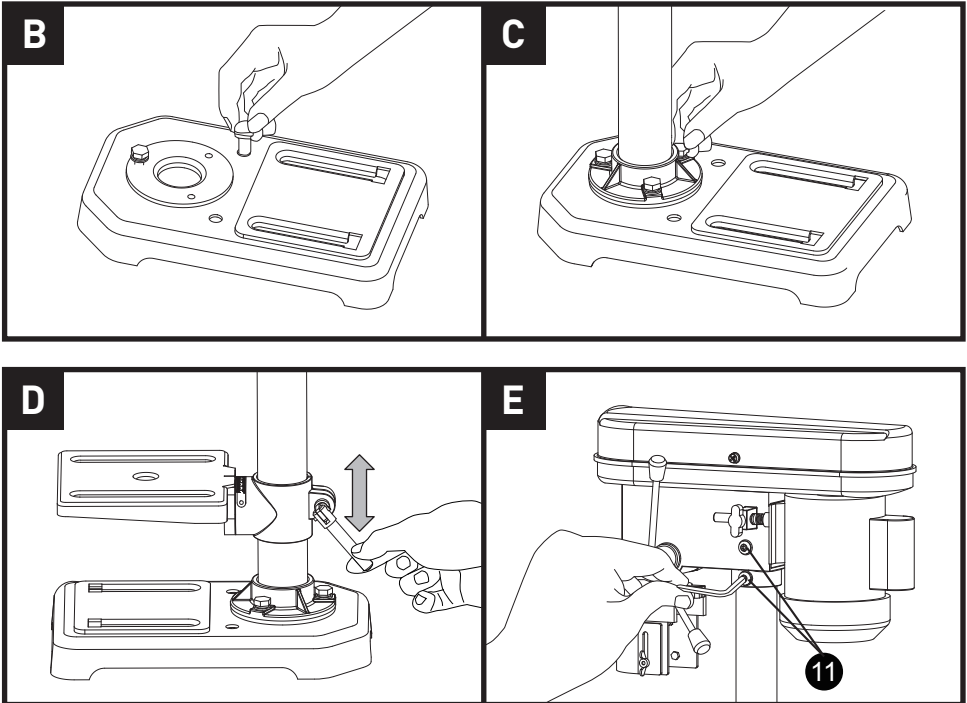
Unscrew the two column locating hex-keyed grub screws (11).

Lower the headstock and motor assembly all the way onto the column.

Position the headstock and motor assembly so the front aligns with the centre of the base plate.

Secure the two hex-keyed grub screws (11) with the supplied key. Retain the key for further adjustments. (SEE FIG E)

Release the power cable and inspect for damage. Also check the plug for damage.





# Assembly Instructions

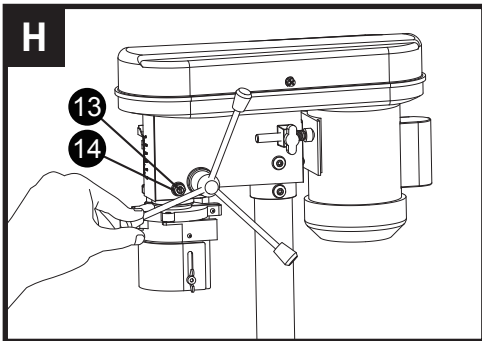
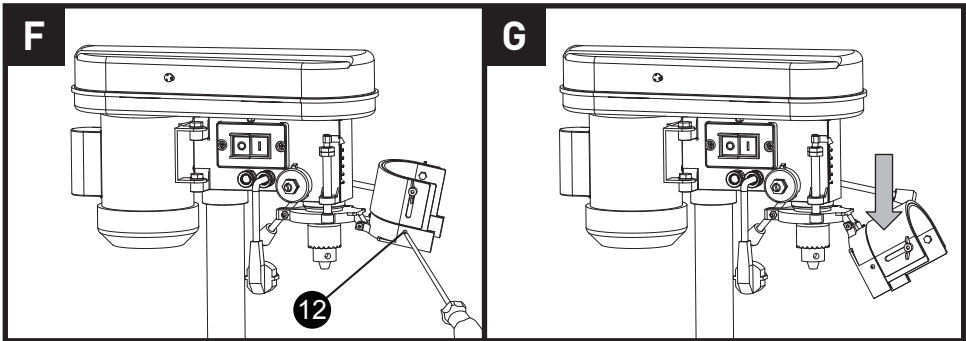
**!** **CAUTION: Do not connect to power supply yet.**

Locate the telescopic guard and locate into the spring loaded guard holder. Secure with small cross headed guard securing screws (12). (SEE FIG F, G)

Attach the three handles into the feed shaft. (SEE FIG H) Raise the adjustable worktable and place a piece of scrap wood on it.

Locate the chuck and lower the drive spindle. Put on the chuck.

**NOTE:** It has a tapered shaft and the chuck locates onto this. Bring the chuck into contact with the wood on the work table and gently apply pressure to lock the chuck onto the spindle.



# Operating Instructions

## 1. OPERATING THE DRILL PRESS

**NOTE:** Remove the plug from the socket before carrying out any adjustment, servicing or maintenance.

### 1) SELECTING THE CORRECT SPEED FOR DIFFERENT WORK

Refer to speed selection label inside of motor housing and select the speed required for the job in hand. The tool has five speed settings: 580, 850, 1220, 1650, 2650/min. Choose the setting nearest to the speed selection label recommendation.

### 2) WORK TABLE ADJUSTMENT

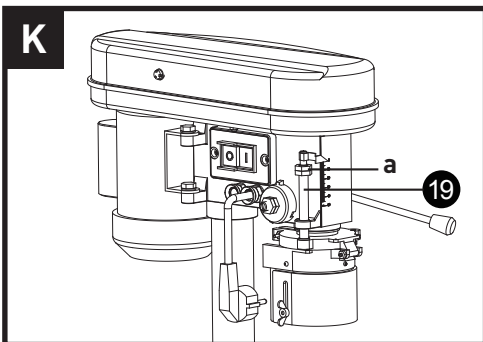
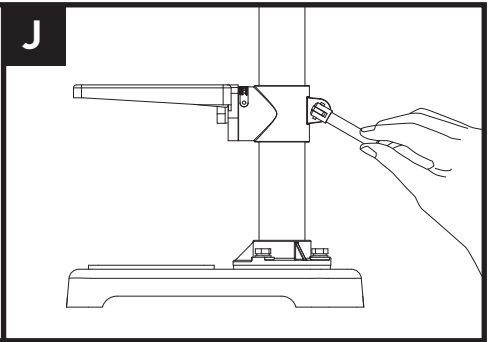
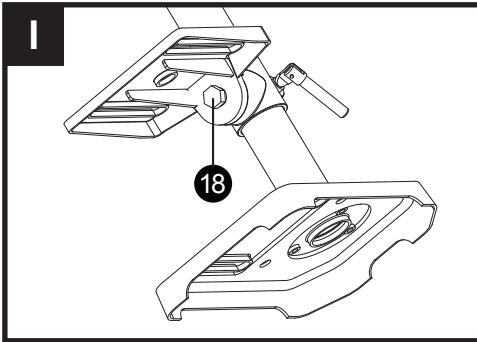
The worktable can rotate + or - 45 degrees. Slacken the table securing bolt (18) and rotate to desired angle. Re-tighten lock nut. [SEE FIG I]

Slacken the locking lever to the rear of the table. [SEE FIG J]

Move up or down the column. When desired height is reached lock into position.

### 3) DEPTH STOP ADJUSTMENT

Bring the drill bit in contact with the work piece to be drilled. Take a measurement from the scale (19) on front of tool [SEE FIG K]. Move work piece and add the amount on to the previous measurement. Move lock nuts down to that required position and lock. This will give a consistent depth when drilling.



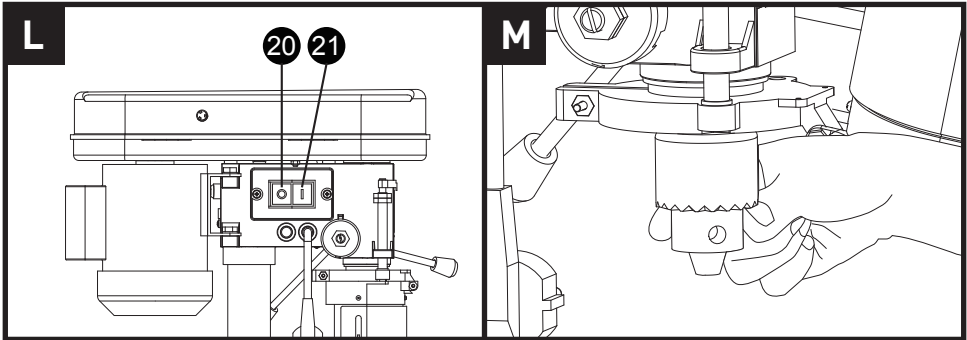
# Operating Instructions

## 4) STARTING AND STOPPING THE DRILL PRESS

The tool is fitted with a no volt switch assembly (SEE FIG L). This means in the event of a power failure when drilling, the motor will not start once the power is restored until the switch is reactivated.

**NOTE:** The cover is fitted with a safety interlock switch (22) (SEE FIG M). If the cover is not correctly located and secured following a speed change, the main switch may fail to operate.

Check that the cover is fully closed and secured.



## Working Hints For Your Drill Press

Always lubricate the drill bits with suitable oil before drilling. This will prolong the life of the drill bits.

**CAUTION:** Do not use water-based coolant or any kind of continuous coolant pump.

# Maintenance

Always lubricate the drill bits with suitable oil before drilling. This will prolong the life of the drill bits.

**Caution:** Do not use water-based coolant or any kind of continuous coolant pump.

Remove all shavings and dust after each operation. Spread oil onto the unplated surfaces especially if the tool is not used for long periods.

Lubricate the spindle drive with oil every six months. The spindle guide screw should be checked periodically to finger tightness.

If the supply cord is damaged, it must be replaced by the manufacturer, its service agent or similarly qualified persons in order to avoid a hazard.

# Technical Data

## Technical Data Table


Voltage	240V-50Hz
Power	350W
No load speed	580, 850, 1220, 1650, 2650/min
Max chuck capacity	13mm
Depth of throat	104mm
Table size	160mm x 160mm
Table bevel	$\pm 45^\circ$
Speed steps number	5
Spindle taper	B16
Spindle travel	50mm
Protection class	I
Machine weight	12.32kg

## Noise Information

A weighted sound pressure

A weighted sound power

Wear ear protection when sound pressure is over:

$L_{pA}$  : 62dB(A)  
 $L_{wA}$  : 75dB(A)  
 $K_{pA}$  &  $K_{wA}$  = 3.0dB(A) 

# Environmental Protection



Waste electrical products must not be disposed of with household waste. Please recycle where facilities exist. Check with your local authorities or retailer for recycling advice.

# Guarantee

This product is selected for DOMESTIC USE ONLY and not for business use.

This product is guaranteed against manufacturing defects for a period of 24 months. This does not cover the product where the fault is due to misuse, abuse, use in contravention of the instructions, or where the product has been the subject of unauthorised modifications or alterations, or has been the subject of commercial use. In the event of a problem with the product within the guarantee period please return it to your nearest store. If the item is shown to have an inherent defect present at the time of sale, the store will provide you with a replacement. Your statutory rights remain unaffected.

Issue1 08/2015

# Declaration of Conformity

This Guild 350W 13mm Drill Press model number BDP13G fully complies with the Machinery Directive 2006/42/EC, Electromagnetic Compatibility Directive 2004/108/EC(before 2016/04/20) and 2014/30/EC(since 2016/04/20), RoHS Directive 2011/65/EU and the following harmonized EU standards

EN 61029-1: 2009/A11:2010

EN ISO 12100:2010

EN 55014-1: 2006 + A1:2009 + A2:2011

EN 55014-2: 1997 + A1:2001 + A2:2008

EN 61000-3-2/A2:2009

EN 61000-3-3: 2013

This declaration is made under the sole responsibility of Argos Ltd, 489/499 Avebury Boulevard, Milton Keynes, MK9 2NW

Category Technical Manager  
Issued 20/10/2015

signed *Luke Wong*

# Plug Replacement (Uk & Ireland Only)

If you need to replace the fitted plug then follow the instructions below.

## **IMPORTANT**

The wires in the mains lead are colored in accordance with the following code:

**Blue = Neutral**

**Brown = Live**

**Green/Yellow=Earth**

As the colors of the wires in the mains lead of this appliance may not correspond with the colored markings identifying the terminals in your plug, proceed as follows. The wire which is colored blue must be connected to the terminal which is marked with N. The wire which is colored brown must be connected to the terminal which is marked with L. The green/yellow wire to the earth terminal is marked with E or  $\perp$ .

If a 13 AMP (BS 1363/A) Plug is used, a 13 AMP Fuse must be fitted, or if any other type of plug is used a 13 AMP Fuse must be fitted, either in the Plug or Adaptor, or on the Distribution Board.

Note: If a moulded plug is fitted and has to be removed take great care in disposing of the plug and severed cable, it must be destroyed to prevent engaging into a socket.

