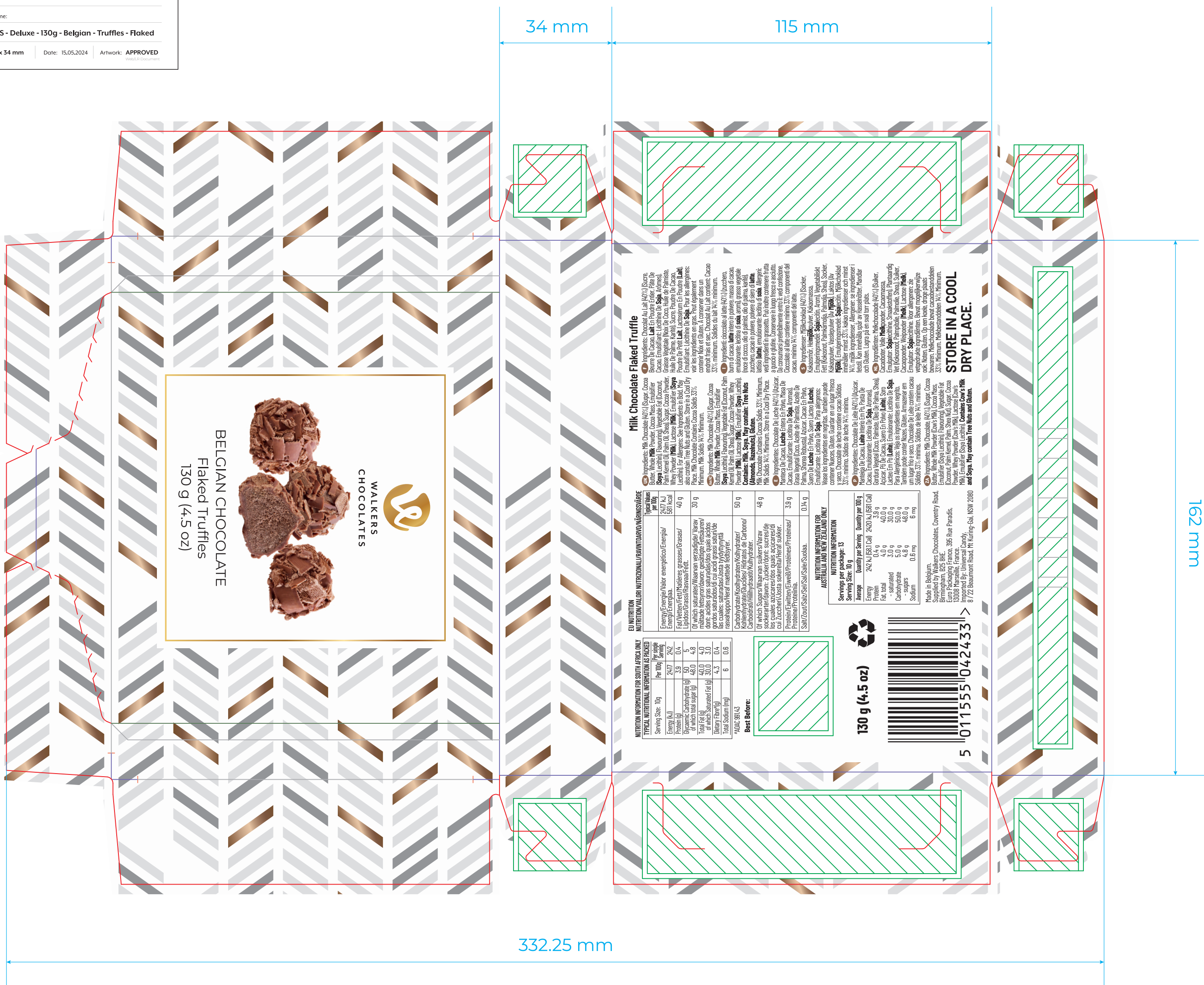




Walkers House, Brickfield Road
Birmingham, B25 8HE, UK
+44 (0) 121 244 1600
admin@walkerschocolates.co.uk

RANGE
2024

Product Code:	Product Name:
0118280	WALKERS - Deluxe - 130g - Belgian - Truffles - Flaked
Dimensions (Scale 1:1): 162 x 115 x 34 mm	Date: 15.05.2024 Artwork: APPROVED



5 **011555 042433** **>**

130 g (4.5 oz)

Best Before:

NUTRITION INFORMATION FOR SOUTH AFRICA ONLY

Typical Nutritional Information as Packed	Per 100g	Per Serving
Energy (kJ)	2417	242
Protein (g)	3.9	0.4
Dry matter	50	5
Total Fat (g)	48.0	4.8
Total Fat of which Saturated Fat (g)	40.0	4.0
Dietary fibre (g)	30.0	3.0
Total Sodium (mg)	4.3	0.4

*AOLC: 98143

EU NUTRITION / NUTRITION W/ALORI

Energy/Energie	Protein	Fat/Veteni/Veiti	Carbohydrate/Carboidrati	Total Fat	Dietary fibre	Total Sodium
2417 kJ / 581 kcal	3.9 g	48.0 g	40.0 g	48.0 g	30.0 g	4.3 mg

TYPICAL NUTRITIONAL INFORMATION AS PACKED

Typical Values per 100g	Typical Values per 30g	
Energy/Energie/Valor Energetica/Energia	2417 kJ / 581 kcal	725 kJ / 174 kcal
Protein	3.9 g	1.2 g
Total Fat	48.0 g	14.4 g
Saturated Fat	40.0 g	12.0 g
Dietary fibre	30.0 g	9.0 g
Total Sodium	4.3 mg	1.3 mg

NUTRITIONAL INFORMATION FOR AUSTRALIA AND NEW ZEALAND ONLY

Serving Size: 10 g	Quantity per Serving	Quantity per 100 g
Energy	242 kJ (581 Cal)	2420 kJ (581 Cal)
Protein	0.4 g	3.9 g
Fat, total	4.8 g	48.0 g
- saturated	3.0 g	30.0 g
Carbohydrate	5.0 g	50.0 g
- sugars	4.8 g	48.0 g
Sodium	0.6 mg	6 mg

Made in Belgium.
Supplied by Walkers Chocolates, Coventry Road, Birmingham, B25 8HE.
Euro Packaging France, 395 Rue Paradis, 13008 Marseille, France.
Imported by: Universal Candy, 8/72 Beaumont Road, Mt Kuring-Gai, NSW 2200

Milk Chocolate Flaked Truffle

Ingredients: Milk Chocolate (40% Sugar, Cocoa Butter, Whole Milk Powder, Cocoa Mass, Emulsifier Soy Lecithin), Flavouring, Vegetable Fat (Coconut, Palm Kernel Oil, Palm Oil), Sugar, Cocoa Powder, Hazelnut, Cocoa Solids 33%, Milk Fat, Milk Solids 14%, Minimum. Also contains Tree Nuts and Gluten. Store in a Cool Dry Place. Milk Chocolate Contains Cocoa Solids 33% Minimum. Milk Solids 14% Minimum.

Ingredients: Milk Chocolate (40% Sugar, Cocoa Butter, Whole Milk Powder, Cocoa Mass, Emulsifier Soy Lecithin), Flavouring, Vegetable Fat (Coconut, Palm Kernel Oil, Palm Oil), Sugar, Cocoa Powder, Hazelnut, Cocoa Solids 33%, Milk Fat, Milk Solids 14%, Minimum.

Contains: Milk, Soy. May contain: Tree Nuts (Almonds, Hazelnuts), Gluten.

Milk Chocolate Contains Cocoa Solids 33% Minimum. Milk Solids 14% Minimum. Store in a Cool Dry Place.

Ingredients: Chocolate (Lactose (40%), Azúcar, Manteca de Cacao, Leche Entera En Polvo, Mantequilla, Crema, Emulsificante, Lecitina De Soja, Aroma), Frijoles Negros (Cacao, Azúcar, Mantequilla, Crema, Emulsificante, Lecitina De Soja), Mantequilla, Crema, Emulsificante, Lecitina De Soja.

Ingredients: Lactose (40%), Azúcar, Manteca de Cacao, Leche Entera En Polvo, Mantequilla, Crema, Emulsificante, Lecitina De Soja.

Para alergenos: Igels ingredients emnegras. **Contiene: Leche, Soja, Mantequilla, Crema, Emulsificante, Lecitina De Soja.** **Contiene: Leche, Soja, Mantequilla, Crema, Emulsificante, Lecitina De Soja.**

Ingredients: Milk Chocolate (40% Sugar, Cocoa Butter, Whole Milk Powder (Cows Milk), Cocoa Mass, Emulsifier (Soya Lecithin), Flavouring, Vegetable Fat (Coconut, Palm Kernel Oil, Palm Oil), Sugar, Cocoa Powder, Hazelnut, Cocoa Solids 33%, Milk Fat, Milk Solids 14%, Minimum. **Contains: Cow's Milk, Cocoa, Soy, Lecithin, Hazelnut and Gluten.**

STORE IN A COOL DRY PLACE.