



Installation in:

Wooden Doors
Plastic Doors
Plasterboard Walls

Tools you will need:

Blu Tack
Crosshead Screwdriver
Drill
Jigsaw
Sharpened Pencil
Spirit Level
Ruler

DIY installation may involve the use of power tools or cut glass. Safety equipment (gloves, eye protection, etc.) should be used and if in doubt consult a professional to carry out the installation.

Suitable Door Types

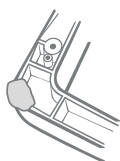
Instructions are provided for installation in all door types, including wooden, plastic, glass, and metal. Before installing in a door with unknown construction please check for a metal plate in case a larger hole is required, as described in the metal door installation section.

If you can only be sure of the construction of the door by drilling a hole in it, make a trial hole anywhere covered by the proposed hole for the SureFlap Microchip Cat Flap.

Note. a simple test for the presence of a steel plate in the door is with a magnet. If the magnet is attracted to the door then there is a steel plate within, and you must follow the instructions for mounting in a metal door. However, even if a magnet is not attracted to the door, still check for the presence of other metals, such as aluminium, which require the same mounting conditions.

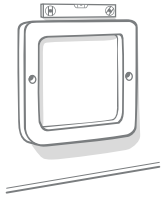
Cat Flap Positioning

The ideal height of the SureFlap Microchip Cat Flap is such that the base of the tunnel is the same height above the ground as your cat's stomach. In practice however, mounting is normally dictated by features in the door into which the unit will be installed. In these circumstances, it is usual to mount the cat flap as low as possible.



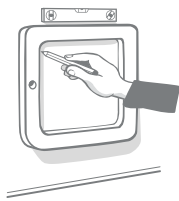
Place the external frame face down. Attach a ball of Blu Tack (or similar adhesive putty) in each of the four corners. These should allow you to stick the frame to most doors.





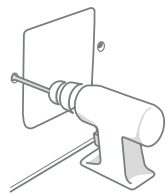
2

Choose the position on the door at which you want to mount the cat flap and stick the frame to the door. To ensure that it is level we recommend you use a spirit level.



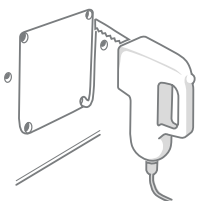
3

Use a sharpened pencil or pen to mark where the inside of the frame touches the door as well as the 2 screw holes. You need to make a legible line as this will be used for cutting against.



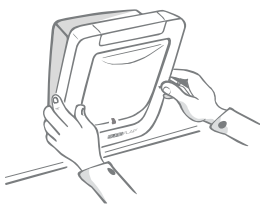
4

Remove the frame from the door and check you have a solid line and dots where the screw holes are. Using a drill with a 6mm (0.25") diameter bit, drill the 2 holes for the screws. It is vital these holes are drilled straight to ensure the 2 halves of the cat flap connect properly.



5

Before you cut out the hole for the tunnel drill holes in all the corners large enough to allow your jigsaw blade through. Cut out the tunnel hole with an electric jigsaw – ensure you cut 3mm (0.125") outside the line you have marked for the hole to allow enough clearance for the tunnel. Make sure that your jigsaw is sitting flat on the door at all times while cutting.



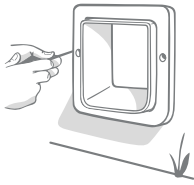
6

Clean off any loose debris, dust and dirt from the door before you install the SureFlap Microchip Cat Flap.

7

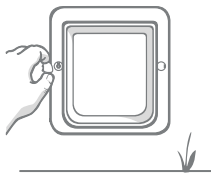
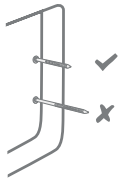
Mount the cat flap in the hole with the main assembly (battery cover) inside the house.





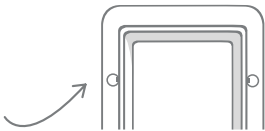
8

Mount the external frame on the **outside of the house**. Depending on the thickness of the door, the tunnel will protrude through the frame by differing amounts. **Under no circumstances should you cut or drill through the tunnel as this contains the microchip reader and will prevent the unit from working.** Three different lengths of screw have been provided for your use. Choose the correct screw length to suit the thickness of your door. If you are not sure, use the smallest first, if this is too short use the next size up. Take care not to use a longer screw than needed, as this may damage the main assembly front face. Screw the external frame to the main assembly.



9

When the cat flap has been mounted correctly, place the screw caps over the screw holes on the external frame. Align the screw caps with the slot pointing inwards and push firmly into place. To remove the screw caps slide a flat blade screwdriver into the side slot and lever the cap out of the hole.



Installation In Metal Doors

The presence of a metal plate in a door can influence the performance of the SureFlap Microchip Cat Flap, reducing the range of the microchip reader. This includes the following:

- Metal skin doors
- Security doors
- Metal garage doors
- UPVC coated metal doors

For most situations you will not notice anything, as the read range will still be sufficient for the majority of microchips. However, if you experience intermittent operation or failure to open for your cat, first check for the presence of a metal plate in the door.

Note. that UPVC coated metal doors often look the same as standard UPVC doors and you may need to look carefully where the panel has been cut. If a metal plate is confirmed, follow the instructions below for improved read range. Improved installation in metal doors requires the mounting adaptor. For details of where to purchase this adaptor see our website www.sureflap.co.uk.

- 1 Cut a circular hole in the door 212mm (8.5") in diameter. Install the SureFlap Microchip Cat Flap in this circular hole according to the instructions in section 6.2. The circular hole removes some metal in the vicinity of the reader antenna, which sits within the tunnel. The result will be improved read range and more reliable performance.
- 2 If you still experience intermittent operation, increase the diameter of the hole from 212mm (8.5") to the maximum diameter of 260mm (10.25") that can be accommodated with the mounting adaptor. This will extend the read range further and should resolve any issues with mounting in a metal door.

