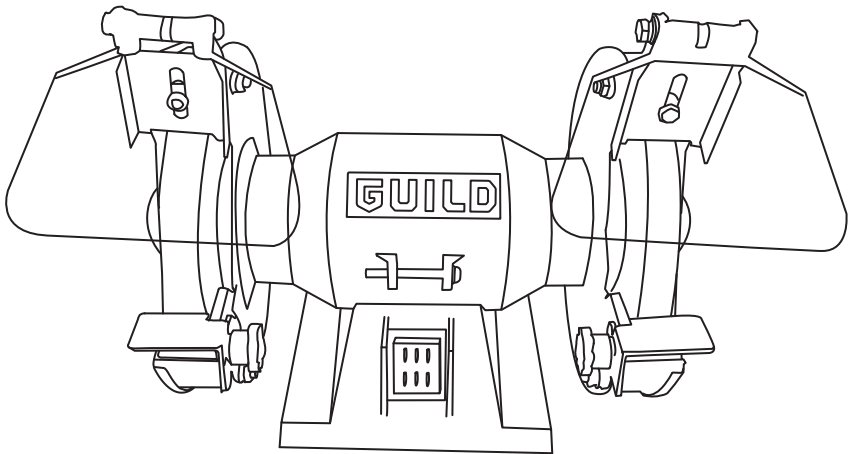


GUILD

150W 150mm Bench Grinder

Instruction Manual

PGB150G



GUILD

After Sales Support

UK/Ireland 0333 3201989
Help@guildpowertools.co.uk

Important - Please read these instructions fully before operating or maintaining your Guild bench grinder

These instructions contain important information that will help you get the best from your Guild bench grinder, ensuring it remains safe to operate.

If you need help or have damaged or missing parts, call the Customer Helpline on 0333 3201989

Contents

Safety Information	3
In The Box	7
Accessories	7
Assembly Instructions	8
Operating Instructions	9
Maintenance	10
Trouble Shooting	10
Working Hints For Your Bench Grinder	10
Technical Data	11
Environmental Protection	11
Guarantee	12
Declaration of Conformity	13
Plug Replacement (Uk & Ireland Only)	14

Safety Information

Important - Please read these instructions fully before starting assembly

Warning Symbols

The following warning symbols appear throughout this assembly manual and indicate the appropriate safety measures you should take when assembling and operating the bench grinder.



To reduce the risk of injury, Please read the instruction manual



Wear ear protection



Wear eye protection



Wear dust mask



Remove plug from mains before maintenance or if cord is damaged.



Waste electrical products must not be disposed of with household waste. Please recycle where facilities exist. Check with your local authorities or retailer for recycling advice.

Safety Information

Important - Please read these instructions fully before starting assembly

Original Instruction

Safety Instructions



“WARNING! When using electric tools basic safety precautions should always be followed to reduce the risk of fire, electric shock and personal injury including the following.

Read all these instructions before attempting to operate this product and save these instructions”.

Maintenance and Servicing

Remove the plug before carrying out any adjustment, servicing or maintenance

Safe operation

- 1 - Keep work area clear
 - Cluttered areas and benches invite injuries.
- 2 - Consider work area environment
 - Do not expose tools to rain.
 - Do not use tools in damp or wet locations.
 - Keep work area well lit.
 - Do not use tools in the presence of flammable liquids or gases.
- 3 - Guard against electric shock
 - Avoid body contact with earthed or grounded surfaces (e.g. pipes, radiators, ranges, refrigerators).
- 4 - Keep other persons away
 - Do not let persons, especially children, not involved in the work touch the tool or the extension cord and keep them away from the work area
- 5 - Store idle tools
 - When not in use, tools should be stored in a dry locked-up place, out of reach of children.
- 6 - Do not force the tool
 - It will do the job better and safer at the rate for which it was intended.
- 7 - Use the right tool
 - Do not force small tools to do the job of a heavy duty tool.
 - Do not use tools for purposes not intended; for example do not use circular saws to cut tree limbs or logs.
- 8 - Dress properly
 - Do not wear loose clothing or jewellery, they can be caught in moving parts.
 - Non-skid footwear is recommended when working outdoors.
 - Wear protective hair covering to contain long hair.
- 9 - Use protective equipment
 - Use safety glasses.
 - Use face or dust mask if working operations create dust.
- 10 - Connect dust extraction equipment
 - If the tool is provided for the connection of dust extraction and collecting equipment, ensure these are connected and properly used.

Safety Information

Important - Please read these instructions fully before starting assembly

Original Instruction

- 11 - Do not abuse the cord
 - Never yank the cord to disconnect it from the socket Keep the cord away from heat, oil and sharp edges.
- 12 - Secure work
 - Where possible use damps or a vice to hold the work. It is safer than using your hand.
- 13 - Do not overreach
 - Keep proper footing and balance at all times.
- 14 - Maintain tools with care
 - Keep cutting tools sharp and clean for better and safer performance.
 - Follow instruction for lubricating and changing accessories.
 - Inspect tool cords periodically and if damaged have them repaired by an authorized service facility.
 - Inspect extension cords periodically and replace if damaged.
 - Keep handles dry, clean and free from oil and grease.
- 15 - Disconnect tools
 - When not in use, before servicing and when changing accessories such as blades, bits and cutters, disconnect tools from the power supply.
- 16 - Remove adjusting keys and wrenches
 - Form the habit of checking to see that keys and adjusting wrenches are removed from the tool before turning it on.
- 17 - Avoid unintentional starting
 - Ensure switch is in "off" position when plugging in
- 18 - Use outdoor extension leads
 - When the tool is used outdoors, use only extension cords intended for outdoor use and so marked.
- 19 - Stay alert
 - Watch what you are doing, use common sense and do not operate the tool when you are tired.
- 20 - Check damaged parts
 - Before further use of tool, it should be carefully checked to determine that it will operate properly and perform its intended function.
 - Check for alignment of moving parts, binding of moving parts, breakage of parts, mounting and any other conditions that may affect its operation.
 - A guard or other part that is damaged should be properly repaired or replaced by an authorized service centre unless otherwise indicated in this instruction manual.
 - Have defective switches replaced by an authorized service centre.
 - Do not use the tool if the switch does not turn it on and off.
- 21 - Warning
 - The use of any accessory or attachment other than one recommended in this instruction manual may present a risk of personal injury.
- 22 - Have your tool repaired by a qualified person
 - This electric tool complies with the relevant safety rules. Repairs should only be carried out by qualified persons using original spare parts, otherwise this may result in considerable danger to the user.

Safety Information

Important - Please read these instructions fully before starting assembly

Original Instruction

- 23 - If the replacement of the supply cord is necessary, this has to be done by the manufacturer or his agent in order to avoid a safety hazard.
- 24 - For tools intended to be connected to a water supply:
 - Replacement of the plug or the supply cord shall always be carried out by the manufacturer of the tool or his service organisation,
 - Keep water clear off the electrical parts of the tool and away from persons in the working area.

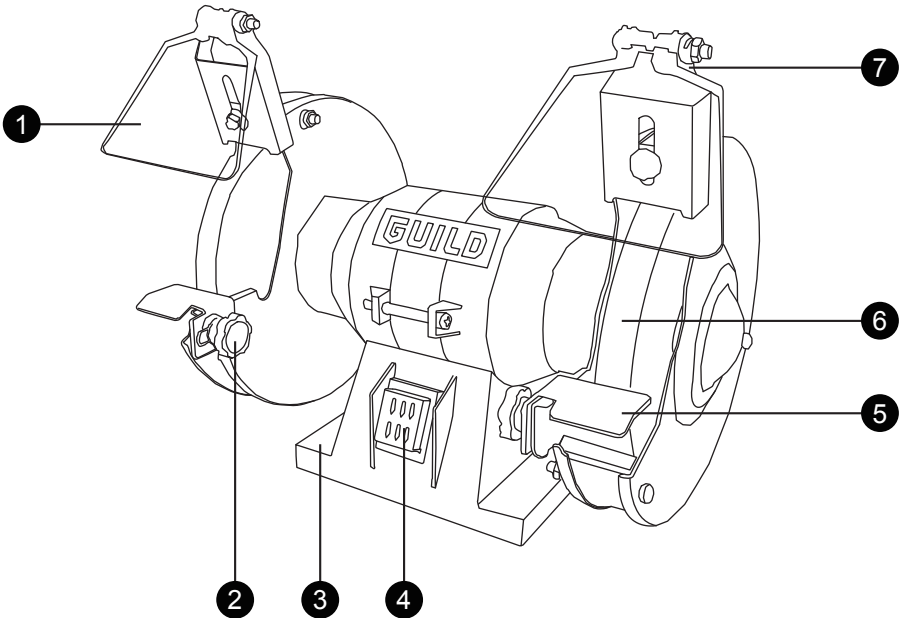
Bench Grinder Safety Warnings

1. Do not use damaged or misshapen grinding wheels or brushes;
2. Use only grinding wheels recommended by the manufacturer which have a marked speed equal to or greater than the speed marked on the nameplate of the tool;
3. Adjust the spark arrestor frequently so as to compensate for wear of the wheel, keep the distance between the spark arrestor and the wheel as small as possible and in any case not greater than 2 mm;
4. The grinder must be secured to a suitable work surface before use
5. For bench grinders and combined bench grinders equipped with straight-sided flanges, the recommended values of the thickness T and the diameter of the hole see the technical data;
6. For combined bench grinders, to always keep the brush assembled on the spindle in order to limit the risk of contact with the rotating spindle.
7. Always wear eye protection and check that the eye shields on the grinder are properly adjusted.
8. The adjustment of the spark arrestor shall be made frequently, so as to compensate the wear of the wheel, keeping the distance between the guard and the wheel as small as possible, but in any case not greater than 2 mm.
9. The adjustment of the work rest shall be done gradually so as to compensate the wear of the wheel, keeping the distance between the work rest and the wheel as small as possible, but in any case not greater than 2 mm.

In The Box

Parts

- ① Eye Shield
- ② Wheel Guard Fixing Screws
- ③ Mounting Holes
- ④ On/Off Switch
- ⑤ Work Rest
- ⑥ Grinding Wheel
- ⑦ Spark Arrester / Eye Shield Bracket



Accessories

Work rest	2pc
Eye shield	2pc
Grinding disk: $\Phi 150 \times 16 \times \Phi 12.7\text{mm}$ left #36	1pc
Grinding disk: $\Phi 150 \times 16 \times \Phi 12.7\text{mm}$ right #60	1pc

Assembly Instructions



NOTE: Before using the tool, read the instruction book carefully.

1. ASSEMBLY

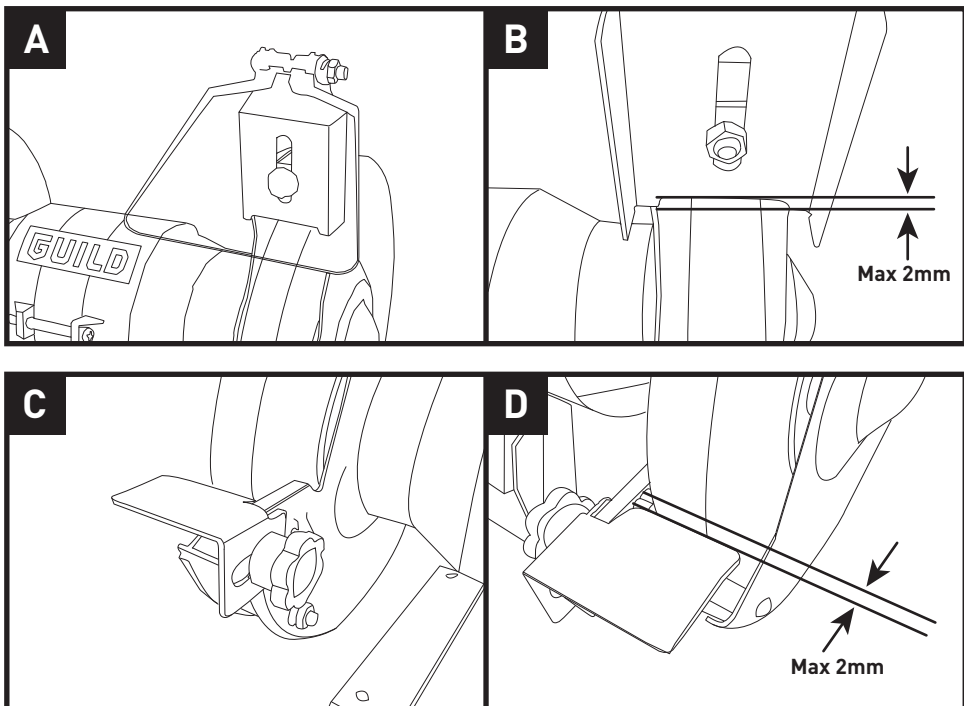
Before use, the eye shields/spark arresters must be fitted to the grinder.

Remove both eye shields from packaging, position the shields over the two mounting brackets above the grinding wheels with the flanges of the spark arrester facing away from you, fix with the screw and washer provided. At this stage do not fully tighten. (SEE FIG A)

The next step is to adjust the eye shields/spark arresters. To do this move the eye shields/spark arresters so as to obtain a gap as small as possible between the arrester and the grinder wheel, not greater than 2mm, the screw must now be fully tightened, (SEE FIG B). The gap must be maintained as the wheel wears.

2. WORK REST ADJUSTMENT

Take the work rest out of the package, fix on the grinder with the knob and washer provided as shown in FIG C. The gap between the rests and the wheels should be checked before use. Measure the gap between the grinding wheel and the rests; this should be as small as possible not greater than 2 mm, if not, loosen the knobs on each of the rests, set the correct gap and fully tighten. (SEE FIG D) The gap must be maintained as the wheel wears.



Operating Instructions

1. OPERATING

Make sure grinder is securely mounted; mounting holes are provided in the base of the grinder for this purpose, but the screws are not provided. Plug in the mains supply and push the on/off switch right to the on position. Switch off and unplug the grinder when not in use.

2. CHANGING GRINDING WHEELS (SEE FIG E)

To change the grinding wheels, first unplug from mains supply then remove the eye shield brackets, then undo and remove the three screws holding the wheel guard covers in place. Remove the cover. Undo and remove the two wheels retaining nuts (a). You may have to hold the wheel and give the spanner a firm tap with a soft headed hammer to release the nut, take off the large domed washer (b), paper washer (c) and remove the wheels (d).

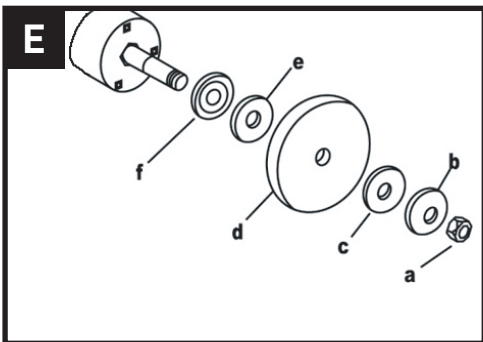
NOTE: The nut on the right side of the grinder has a standard right hand thread (turn counter-clockwise to loosen). The one on the left side has a left hand thread (turn clockwise to loosen).

Replace in same order, making sure both domed washers face correct direction, check the paper washer(c and e), if damaged replace with new paper washer. Hold the wheel and tighten the nut firmly but do not over-tighten.

NOTE: Only replace flanges with original items, these can be supplied through a authorized dealer.



WARNING: OVERTIGHTENING CAN CRACK A GRINDING WHEEL.



Maintenance

Remove the plug from the socket before carrying out any adjustment, servicing or maintenance.

If the supply cord is damaged, it shall be replaced by the manufacturer or its service agent or similarly qualified person in order to avoid a hazard.

Trouble Shooting

Although your new bench grinder is really very simple to operate, if you do experience problems, check the following:

1. GRINDER WILL NOT START

Check that there is "mains" at the socket; test with an electrical screwdriver or another electrical appliance; check the connections in the plug; correct and tighten poor connections; check the fuse; if suspect replace with correct rating.

2. WHEEL WOBBLER OR VIBRATES

Check that the lock-nut is tight. Check that the wheel is correctly located on the shaft and locating washer. If excessive pressure has been used or the wheel has "caught", it may be damaged causing it to vibrate. If there is any evidence that the wheel is damaged, do not use, remove it and replace with a new wheel. Dispose of old wheels sensibly.

3. WHEEL LEAVES ROUGH FINISH

Too much pressure on the wheel can cause a poor surface finish. If working with aluminium or similar soft alloy, the wheel will soon become clogged and will not grind effectively. There are no other users serviceable parts in your bench grinder.

Working Hints For Your Bench Grinder

Your bench grinder is useful for sharpening tools, e.g. drills, chisels; refacing tools, e.g. removing burrs from tool edges; removing material, however this is not a heavy duty tool and is designed primarily for light home and hobby use.

The two different types of wheel will allow the grinder to meet various needs. Typically, use the coarse grinding wheel for rough cutting, i.e. removing a larger amount of material. Use the medium wheel for finishing to leave a smoother surface.

If the grinder is used on soft metals such as aluminium, the wheel will soon clog and will have to be changed.

At all times, let the grinder do the work, do not force it or apply excessive pressure to the wheel/cutter.

Try to use the tool rest for supporting and guiding the workpiece. Do not grind using the side cheeks of the grinding wheel as undue pressure on the side of the wheel could cause the wheel to shatter.

Technical Data

Technical Data Table


Voltage	230 V-240V-50 Hz
Power input	150W S2 30min
No load speed	2950/min
Wheel size 1	$\Phi 150 \times 16 \times \Phi 12.7$ mm left #36
Wheel size 2	$\Phi 150 \times 16 \times \Phi 12.7$ mm right #60
Protection class	I
Machine weight	4.90kg

Noise Information

A weighted sound pressure

A weighted sound power

Wear ear protection when sound pressure is over:

L_{pA} : 63dB(A)
 L_{wA} : 79dB(A)
 K_{pA} & K_{wA} = 3.0dB(A) 

Environmental Protection



Waste electrical products must not be disposed of with household waste. Please recycle where facilities exist. Check with your local authorities or retailer for recycling advice.

Guarantee

This product is selected for DOMESTIC USE ONLY and not for business use.

This product is guaranteed against manufacturing defects for a period of 24 months. This does not cover the product where the fault is due to misuse, abuse, use in contravention of the instructions, or where the product has been the subject of unauthorised modifications or alterations, or has been the subject of commercial use. In the event of a problem with the product within the guarantee period please return it to your nearest store. If the item is shown to have an inherent defect present at the time of sale, the store will provide you with a replacement. Your statutory rights remain unaffected.

Issue1 08/2015

Declaration of Conformity

This Guild 150W 150mm Bench Grinder model number PGB150G fully complies with the Machinery Directive 2006/42/EC, Electromagnetic Compatibility Directive 2004/108/EC(before 2016/04/20) and 2014/30/EC(since 2016/04/20), RoHS Directive 2011/65/EU and the following harmonized EU standards

EN 61029-2-4: 2011

EN 61029-1: 2009/A11:2010

EN 55014-1: 2006 + A1:2009 + A2:2011

EN 55014-2: 1997 + A1:2001 + A2:2008

EN 61000-3-2:2014

EN 61000-3-3:2013

This declaration is made under the sole responsibility of Argos Ltd, 489/499 Avebury Boulevard, Milton Keynes, MK9 2NW

Category Technical Manager
Issued 20/10/2015

signed *Luke Wang*

Plug Replacement (Uk & Ireland Only)

If you need to replace the fitted plug then follow the instructions below.

IMPORTANT

The wires in the mains lead are colored in accordance with the following code:

Blue = Neutral

Brown = Live

Green/Yellow=Earth

As the colors of the wires in the mains lead of this appliance may not correspond with the colored markings identifying the terminals in your plug, proceed as follows. The wire which is colored blue must be connected to the terminal which is marked with N. The wire which is colored brown must be connected to the terminal which is marked with L. The green/yellow wire to the earth terminal is marked with E or \perp .

If a 13 AMP (BS 1363/A) Plug is used, a 13 AMP Fuse must be fitted, or if any other type of plug is used a 13 AMP Fuse must be fitted, either in the Plug or Adaptor, or on the Distribution Board.

Note: If a moulded plug is fitted and has to be removed take great care in disposing of the plug and severed cable, it must be destroyed to prevent engaging into a socket.

