



Branch 1 in Drużyna: Fleksograf studio prepress sp.j.
ul. Taborowa 39, 62-053 Drużyna | phone: 61 898 30 16 | mobile: +48 513 042 084
Branch 2 in Wągrowiec: Fleksograf studio prepress sp.j.
ul. Lipowa 29M, 62-100 Wągrowiec | mobile: +48 530 995 204

www.fleksograf.com.pl
biuro@fleksograf.com.pl

General information

Client:	FOL-PAK Jerzy Kesik	Order no.:	FL43344C_ZM_8.1.2024
Client's design no.:	-		
Project name:	Lilly O'Briens Creamy Caramel & Sea Salt 100 g		
Project version:	2	Completion date:	12.01.2024
Person commissioning the project:	Kamil Keşik	e-mail:	kamil.kesik@fol-pak.com.pl
Person supervising the project:	Łukasz	e-mail:	biuro@fleksograf.com.pl

Technical information

External color model:	No	Color model type:	-
Printing house:	FOL-PAK Jerzy Kesik	Machine:	UTEKO
Cylinder:	390 [mm]	Profile:	-
Substrate:	BOPP mat	Lamination:	PET met / PE
Plate type:	Kodak NX	Plate thickness:	1,14 mm
Way of printing:	reverse	Printing direction:	
Number of copies:	2x3 [W x H]		
Substrate width:	838 [mm]		
Way of printing:	reverse		

Barcode

Code type:	EAN 13	In line with print dir.:	NO	Barcode:	5390394017940
Size:	90%	Recommended code size (acc. standard GS1):	SC5(130%)		

Printed colors

1. M	2. Y	3. K	4. P Cool Gray 9 C	5. WHITE_LILYS CREAM
Pokrycie - [%]	Pokrycie - [%]	Pokrycie - [%]	Pokrycie - [%]	Pokrycie - [%]
Lpi: 150 Kąt: 67,5 Anilox: 420	Lpi: 150 Kąt: 82,5 Anilox: 420	Lpi: 150 Kąt: 37,5 Anilox: 420	Lpi: 150 Kąt: 37,5 Anilox: 420	Lpi: KRESKA
NOWA	NOWA	NOWA	NOWA	NOWA
6. P 4975 C	7. ZŁOTO 1	8. ZŁOTO 2		
Pokrycie - [%]	Pokrycie - [%]	Pokrycie - [%]		
Lpi: KRESKA	Lpi: KRESKA	Lpi: KRESKA		
NOWA	NOWA	NOWA		

The tolerance for the reported Ink Coverage is +/- 5%.

Non-printed colors

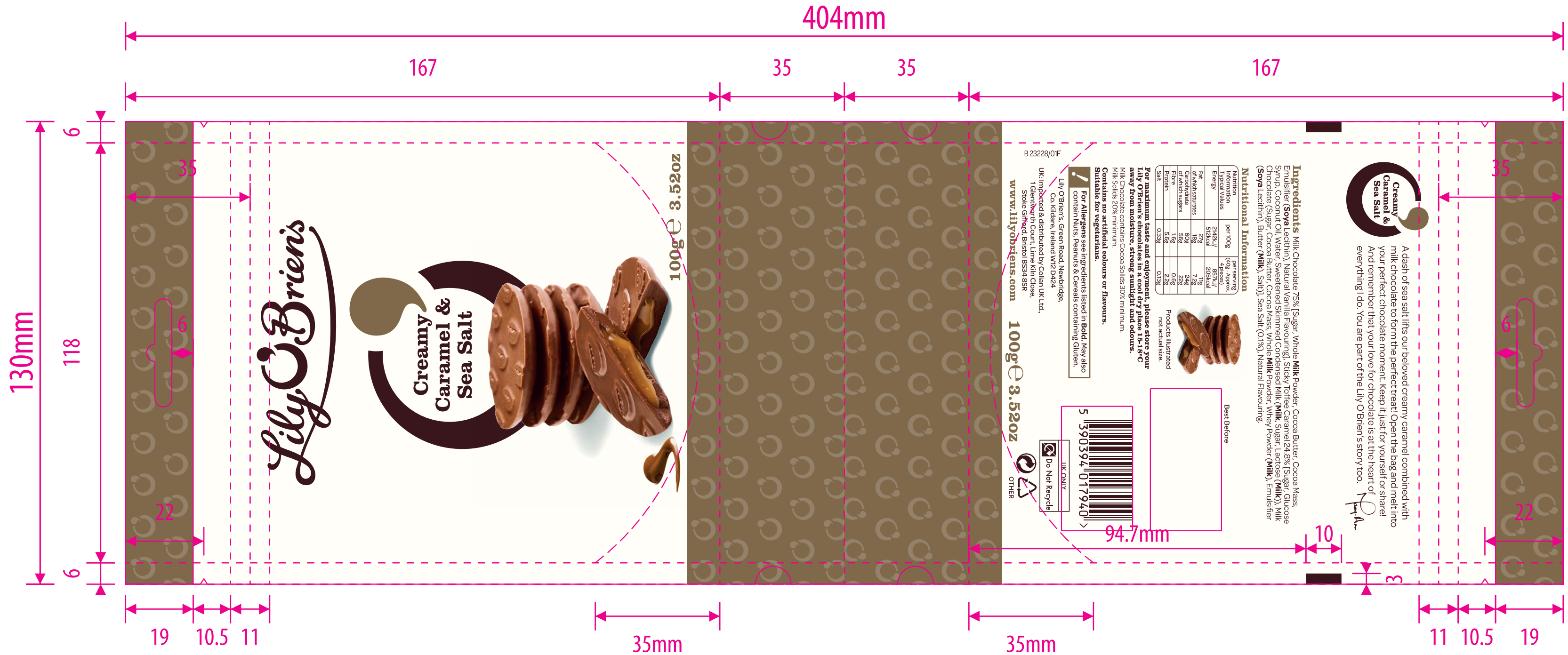
1. Dimensions	2. Grid	3. Die cutter	4. Substrate	5. White simulation
---------------	---------	---------------	--------------	---------------------

Notes

Colors visible on a screen, printouts or proofs are not 100% representative of printouts from printing machine. Additional colors, e.g. Pantone, are ultimately selected at the printing house. Please verify design very carefully because in accordance with the GTC available at www.fleksograf.com.pl Fleksograf shall not be held liable for any mistakes that have not been noticed.

In order to display this file correctly in Acrobat Pro DC you need to do the following:
1. Set - output preview: simulation profile - Coated FOGRA39
2. Select - output preview: simulate overprinting

PROJECT:	-	PROOF:	-
ACCEPT:	EM	IMP:	-
BMP:	-		



Ingredients: Milk Chocolate 75% (Sugar, Whole Milk Powder, Cocoa Butter, Cocoa Mass, Emulsifier (Soya Lecithin), Natural Vanilla Flavouring, Salt), Toffee (Caramel, Sugar, Glucose Syrup, Coconut Oil, Water, Sweetened Shredded Coagulated Milk (Milk), Sugar, Lactose (Milk), Milk Chocolate (Sugar, Cocoa Butter, Cocoa Mass, Whole Milk Powder, Whole Milk Powder (Milk), Emulsifier (Soya Lecithin), Butter (Milk), Salt), Sea Salt (0.1%), Natural Flavouring.

Nutritional Information

Nutrient	per 100g	per serving (40g)
Energy	2142kJ / 512kcal	857kJ / 205kcal
Fat	18g	7.2g
of which saturates	60g	24g
Carbohydrates	16g	6.4g
of which sugars	15g	6g
Fibre	5.8g	2.3g
Protein	0.33g	0.13g

Products illustrated not actual size.

For maximum taste and enjoyment, please store your Lilly O'Brien's chocolates in a cool dry place 15-18°C away from moisture, strong sunlight and odours.

Milk chocolate contains Cocoa Solids 30% minimum.

Contains no artificial colours or flavours.

Suitable for vegetarians.

For Allergens see ingredients listed in Bold. May also contain Nuts, Peanuts & Cereals containing Gluten.

Lilly O'Brien's, Green Road, Newbridge, Co. Kildare, Ireland W12 D424
UK: Imported & distributed by Colian UK Ltd., 1 Glenworth Court, Lime Kiln Close, Stoke Gifford, Bristol BS34 8SR
www.lilyobriens.com

100g e 3.52oz

Best Before: 5 390394 017940

Do Not Recycle OTHER