



INSTRUCTION MANUAL

MODEL NO. CFS6080

FACIAL SAUNA







Important - Please read these instructions carefully before first using this product and retain for future reference.

IMPORTANT SAFEGUARDS

Read all instruction before use.

When using this electrical appliance, in order to reduce the risk of fire, electric shock, and/or injury to person, basic safety precautions should be followed, including the following:

1. This appliance is designed for indoor household use only, and must only be used as intended in accordance with the following instructions. Do not use the facial sauna for any other purpose.
2. This appliance can be used by children aged from 8 years and above and persons with reduced physical, sensory or mental capabilities or lack of experience and knowledge if they have been given supervision or instruction concerning use of the appliance in a safe way and understand the hazards involved. Children shall not play with the appliance. Cleaning and user maintenance shall not be made by children without supervision.
3. Children should be closely supervised at all times when they are near any electrical appliance and must not be allowed to play with this appliance.
4. This product is not suitable for use by persons suffering with heart disease, brandy nose, or sensitive skin conditions such as eczema or psoriasis.
5. This product is not suitable for use by persons suffering from breathing conditions such as bronchitis or sinus problems or used as a substitute for medical attention, and should never be used with a towel over the head as normally associated with the use of homemade vaporiser setups.
6. Do not use if there are open wounds or suffering from any rashes on the face or after any facial or dental surgery including dental cleaning after having undergone any local anaesthetic.
7. Consult a doctor before using this appliance in cases of fever, inflammation or pain or if under doctor's care or taking medication.
8. Always ensure the mains outlet voltage corresponds to the voltage stated on the unit rating label.
9. If the supply cord is damaged, it must be replaced by the manufacturer, its service agent or similarly qualified persons in order to avoid a hazard.

10. Do not use any other attachments or accessories not originally supplied with the product.
11.  WARNING: Do not use this appliance near bathtubs, showers, basins or other vessels containing water.
12. Do not use the unit near gas or other flammable materials (such as benzene, paint thinner, sprays, etc.)
13. Do not leave or store the appliance near a tub, sink or other place where it will be exposed to water and other liquids or high humidity.
14. Switch off the appliance and unplug from the mains socket when not in use before, refilling with water, before changing masks or before cleaning the appliance.
15. Always ensure that your hands are dry before operating this appliance, or when connecting /disconnecting the appliance from the mains supply.
16. Never leave the sauna unattended while connected to the mains power supply. After use always unplug from the power outlet.
17. Keep the appliance and supply cord away from sources of heat, sharp objects or anything that may cause damage.
18. Do not carry this appliance by the supply cord or use the cord as a handle, or pull the cord to remove the plug from the mains socket.
19. Do not operate this appliance if the supply cord or plug becomes damaged.
20.  WARNING - Do not use this product with any additives such as essential oils, decongestants, medicinal or cosmetic liquids. Only fill the water reservoir with clean tap water using the measuring cup provided. Do NOT use distilled water. Do not fill directly from the tap, and do not exceed the maximum fill level.
21.  WARNING - Do not use this product unless the face-treating mask has been securely fitted, and securely locked in position.
22.  WARNING - Steam will be hot. If you feel discomfort, move your face away from the facial mask to a comfortable distance. Every few minutes, slightly vary the position of your face to provide an even sauna, staying in one position for too long can cause discomfort and potential scalding.

23. After use the appliance should be cleaned to avoid the accumulation of grease and other residues. Do not use alcohol, acetone, or similar solvents.
24. Do not attempt to repair the facial sauna, there are no user serviceable parts inside.
25. Please retain this instruction manual for future reference.

KNOW YOUR APPLIANCE

1. Facial mask
2. Main body
3. 0-Low-High Switch
4. Power indicator
5. Measuring cup

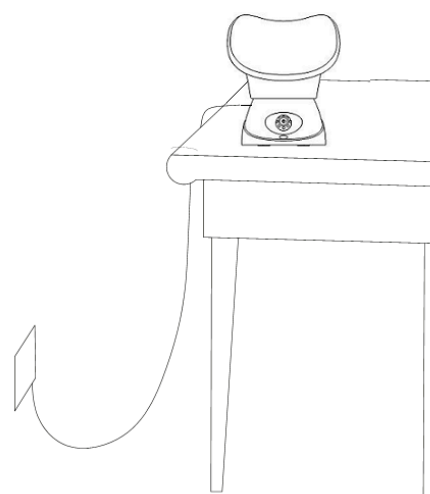


OPERATION INSTRUCTION

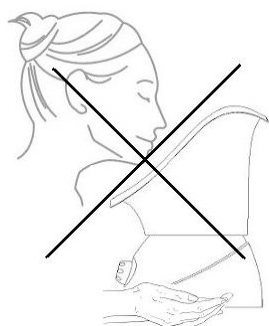
Note: Always place the unit on a level surface.

Note: Ensure that the electrical cord loops below the electrical outlet to form a 'Drip loop'. This will prevent water from running down the cord into the electrical outlet

It is essential that the user familiarise themselves with the assembly of the facial **mask** to the base unit to ensure the mask is securely locked in position on the base unit before use. The user must also ensure that both the appliance and user are suitably positioned to ensure a comfortable operating position for the duration of the facial sauna session.



WARNING- The appliance must NOT be lifted or moved during use and must remain stationary until all of the water has evaporated (i.e. The appliance is no longer producing steam), and the sauna session ended.

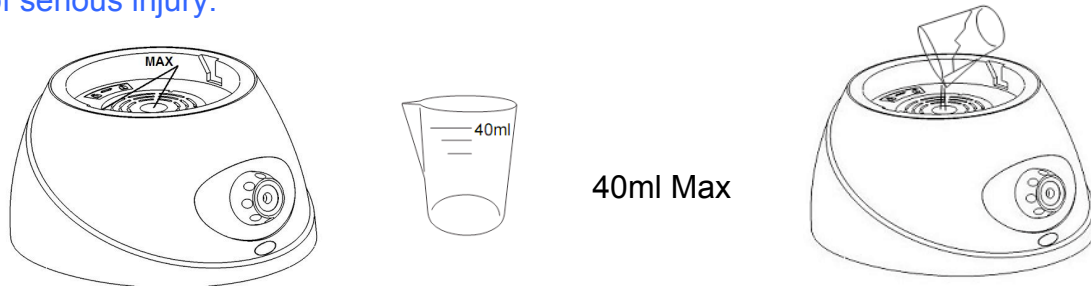


WARNING: Do not use this product with a towel over the head.

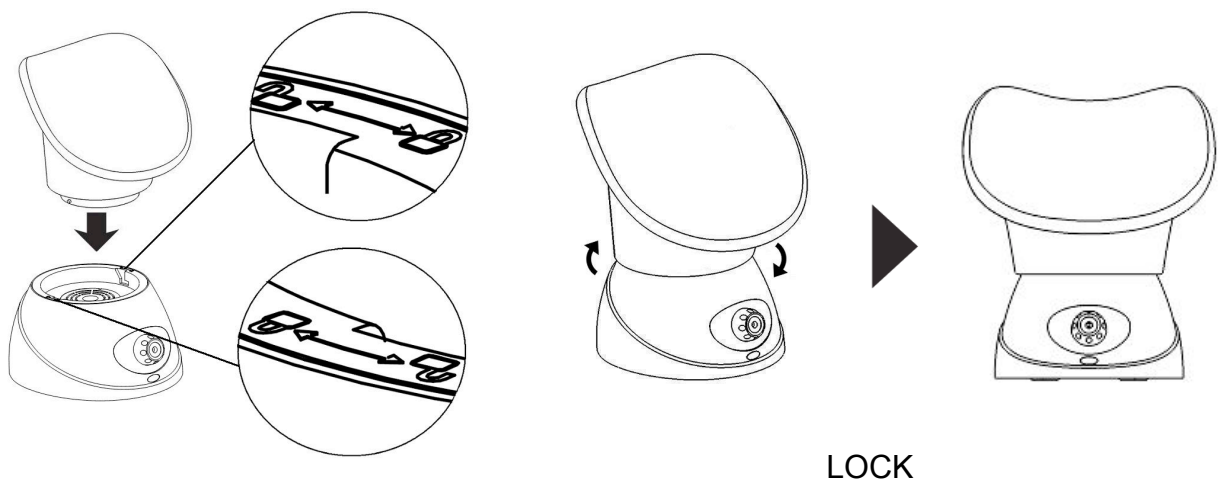
WARNING: Do not use this product with any additives such as essential oils, decongestants, medicinal or cosmetic liquids. Only fill the water reservoir with clean tap water using the measuring cup provided. Do NOT use distilled water. Do not fill directly from the tap, and do not exceed the maximum fill level.

WARNING: Steam will be hot. If you feel discomfort, move your face away from the facial mask to a comfortable distance. Every few minutes, slightly vary the position of your face to provide an even sauna, staying in one position for too long can cause discomfort and potential scalding.

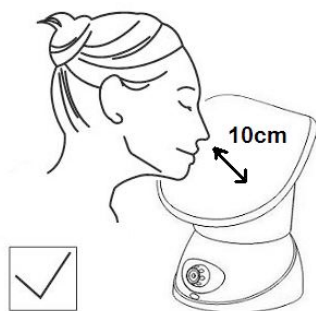
1. Ensure the appliance is unplugged from the mains outlet.
2. Turn the mask anti-clockwise to unlock and remove it from the main body.
3. Using the measuring cup, fill the tank with 40ml of water through the cover hole in the middle (the measuring cup is marked with 20ml, 40ml marks). The tank has a MAX LEVEL mark on the inside tank wall and on the middle of tank cover, DO NOT exceed this level as this will cause a scalding hazard. **Never use distilled water, as superheating can occur causing spitting, and in extreme cases sudden explosion of the water with a danger of serious injury.**



4. Fit the facial mask onto the main body. **There are “Lock—Unlock” marks on the both sides of the base.** Turn **the mask** clockwise to lock it into position.



5. Connect the unit to the mains outlet.
6. Turn on the unit by switching the on/off switch (3) to either “L” Low heat setting or “H” High heat setting. The power indicator (4) will **be** illuminated.
7. Gently place your face close to the rim of the mask leaving a small gap between mask and face and with your hand palms placed flat on the table.



DO NOT FORCE YOUR FACE INTO THE MASK BODY.

8. Use only 15 to 20 minutes for a session of facial treatment.
9. After use switch off and disconnect the wall plug before emptying the unit. Allow facial mask to cool before removing from the unit.

Warning - NEVER attempt to lift or carry the appliance by the facial mask as this can detach if not fitted correctly and securely locked into position. Always lift or carry the appliance by holding the base unit with both hands.



10. Pour out water from tank, wipe mask and tank cover before storing.

CLEANING

1. Clean the appliance to avoid accumulation of grease and other contaminants.
2. Never use any alcohol, acetone, petrol or abrasive cleaning agents to clean the plastic parts.
3. Unplug the appliance before cleaning.
4. Wait for the appliance to completely cool down before cleaning.
5. Clean the outside of the appliance with a soft and damp cloth and then dry it.
6. Never use sharp or pointed object as these may damage the heating plate.
7. Never submerge the appliance or its base in water.
8. Remove the mask from the appliance base, clean it with a damp cloth and then dry it with a towel.

STORAGE

The facial sauna should be stored in a dry place.

DISPOSAL INFORMATION



Waste electrical products should not be disposed of with household waste.

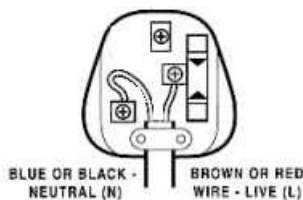
Please recycle where facilities exist. Check with your local authority for recycling advice.

CONNECTION TO POWER

- Before connecting, check that the voltage indicated on the appliance (bottom of the appliance) corresponds with the main voltage in your home. If this is not the case, consult your dealer and do not use.
- This appliance may be fitted with a moulded BS plug. If you need to change the fuse in a moulded plug, the fuse cover must be refitted. If the fuse cover is lost or damaged, the plug must not be used until a replacement is obtained.
- If the plug has to be changed because it is not suitable for your socket, or becomes damaged, it should be cut off and appropriate plug fitted following the wiring instructions. The plug removed must be disposed of safely as insertion into a mains socket is likely to cause an electrical hazard.
- This equipment must be disconnected from the mains when not in use. Do not allow this unit to be exposed to rain or moisture.

For your own safety read the following instructions carefully before attempting to connect this unit to the mains.

You should only plug the appliance into 220-240V AC supply. Connecting it to another power supply may cause damage to the appliance.



The wires in this mains lead are coloured in accordance with the following code:

BLUE = NEUTRAL
BROWN = LIVE

IMPORTANT

The colours of the wires in the mains lead of this appliance may not correspond with the coloured markings identifying the terminals in your plug proceed as follows:



Caution
To prevent electric shock disconnect from
the mains before removing the cover

- The blue wire must be connected to the terminal marked with the letter N or coloured black.
- The brown wire must be connected to the terminal marked with the letter L or coloured red.

If a 13 Amp (BS1363) fused plug is used it must be fitted with a 5A fuse conforming to BS1362 and be ASTA approved.

If in doubt contact a qualified electrician



PRODUCT GUARANTEE

This product is guaranteed against manufacturing defects for a period of



Year

This product is guaranteed for twelve months from the date of original purchase. Any defect that arises due to faulty materials or workmanship will either be replaced, refunded or repaired free of charge where possible during this period by the dealer from whom you purchased the unit.

The guarantee is subject to the following provisions:

- The guarantee does not cover accidental damage, misuse, cabinet parts, knobs or consumable items.
- The product must be correctly installed and operated in accordance with the instructions contained in this manual. A replacement copy of this Instruction Manual can be obtained from www.argos-support.co.uk
- It must be used solely for domestic purpose.
- The guarantee will be rendered invalid if the product is re-sold or has been damaged by inexpert repair.
- Specifications are subject to change without notice.
- The manufacturer disclaims any liability for the incidental or consequential damages.
- The guarantee is in addition to, and does not diminish your statutory or legal rights.

Guarantor: Argos Ltd
489-499 Avebury Boulevard
Central Milton Keynes
MK9 2NW
www.argos-support.co.uk