

Floor Lamp-432-9426/9433/9440/3851768

Assembly and User Instructions – Please keep for future reference



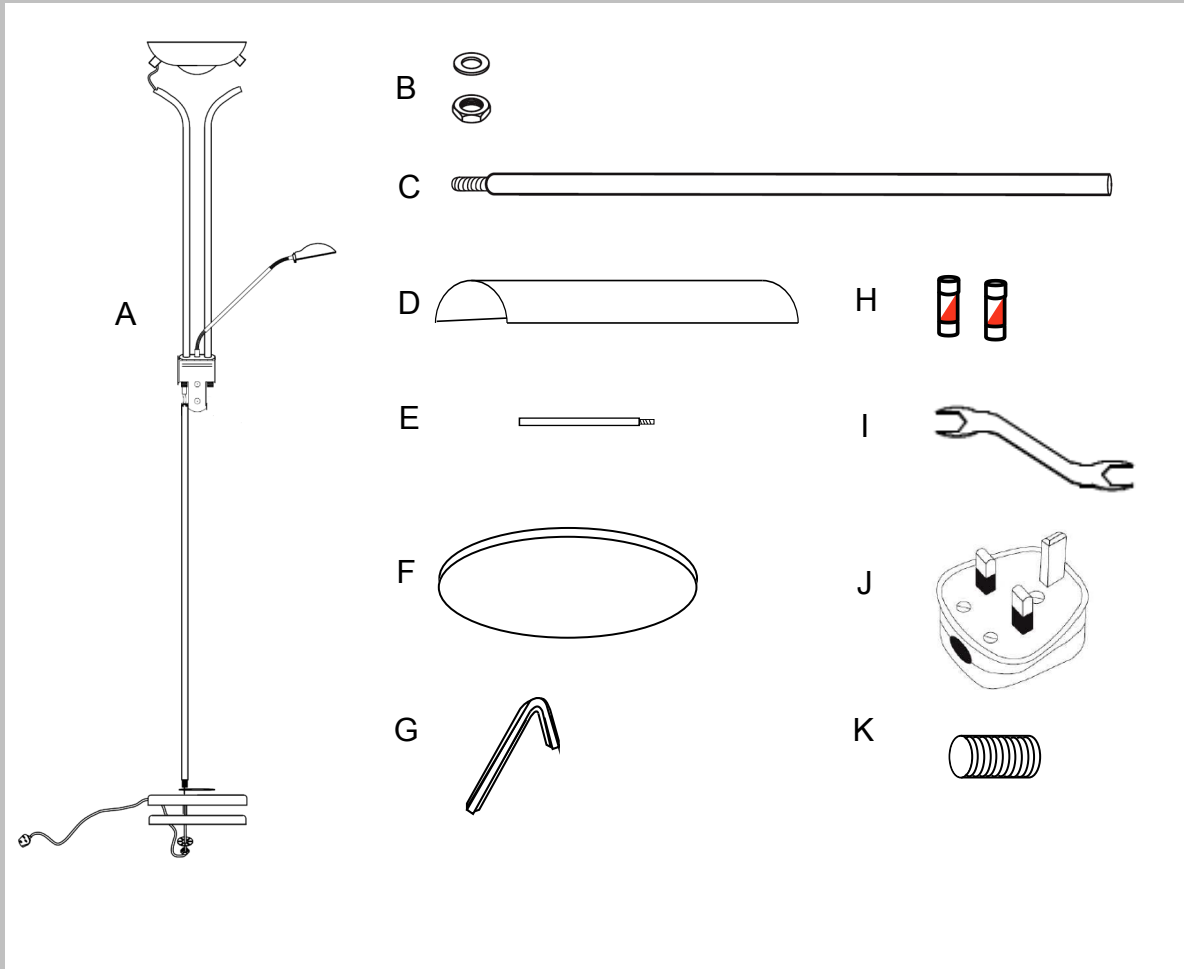
Important –Please read these instructions fully before using
If you need help please call our **Customer Services** on 0345 640 3030

Contents

Section	Page
Parts and Component list	2
Safety Information	3
Maintenance	3
Installation	4

Produced for Argos, 489-499 Avebury Boulevard, Central Milton Keynes, MK9 2NW

Parts and Components Listing



- A. Fitting x 1
- B. Fixing nuts & Washers x 2 (1 pre-fitted)
- C. Pole x 2 (1 pre-fitted)
- D. Curved Glass Shield (pre-fitted)
- E. Adjusting Arm for Child lamp x 1
- F. Round Glass Shield (pre-fitted)
- G. Allen Key x 1
- H. Dimmer Fuse 2.5A x 2— (x1 pre-fitted, x1 Spare)
- I. Spanner x 1
- J. Plug (pre-fitted)
- K. Spare grub screw x 1

Safety Information

IMPORTANT – Please read these instructions fully before installation and keep for future reference

For your safety, this product must be installed in accordance with local building Regulations. If in any doubt, or where required by law, consult a competent person who is registered with an electrical self certification scheme. Further information is available online or from your local authority.

IMPORTANT -This product has been designed for non-professional, domestic use only.

IMPORTANT - Carefully unpack and examine the product for any damage. If you think there is a defect, **do not** use the product and contact our customer services on **0345 640 3030**.

IMPORTANT - Dispose of all packaging correctly and responsibly and in accordance with all local laws and regulations. Never leave packaging components within reach of children as they can be a source of danger.

IMPORTANT – Before inserting or replacing bulb(s) ensure the power is switched off and the bulb(s) have cooled down.

WARNING – This is a Class I product and requires an earth connection.

WARNING – Do not modify or alter any product before or after installation. This may render the product un-safe.

WARNING - Accessible parts become hot during use, young children **must** be kept away.

WARNING - This product is not intended for use by persons (including children) with reduced physical, sensory and mental capabilities, or lack of experience and knowledge, unless they have been given supervision or instruction concerning use of the product by persons responsible for their safety.

WARNING - Children should be supervised to ensure that they do not play with the product.

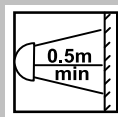
WARNING - **Do not** place this fitting in a damp atmosphere.

WARNING – **Do not** remove the metallic reflective shield.

WARNING – If the Glass shields are damaged or broken they must be replaced before continuing to use the Floor Lamp.

CAUTION - Ensure the power is switched off before cleaning or carrying out any maintenance.

SPECIAL NOTE—**Should the dimmer fail to operate as normal, please check and replace the fuse in the dimmer unit (spare fuse supplied).**



Maintenance

Maintenance

CAUTION! Always disconnect power supply when servicing or cleaning.

Cleaning

- Use a clean dry soft or slightly damp cloth.
- Do not use abrasive cloths or polishes as this may cause damage to the product.

Changing the bulbs

IMPORTANT! Ensure that the bulb has cooled down before replacing.

- Ensure that the power supply has been disconnected.
- Carefully remove the protective glass shields.
- Insert replacement bulbs avoiding contact with your fingers as this will shorten the bulb life.
- If the bulb comes into contact with fingers clean the bulb with a soft dry cloth or tissue.

IMPORTANT!

If the external flexible cable or cord if this Luminaire is damaged it shall be exclusively replaced by the manufacturer or his service agent or similar qualified person.

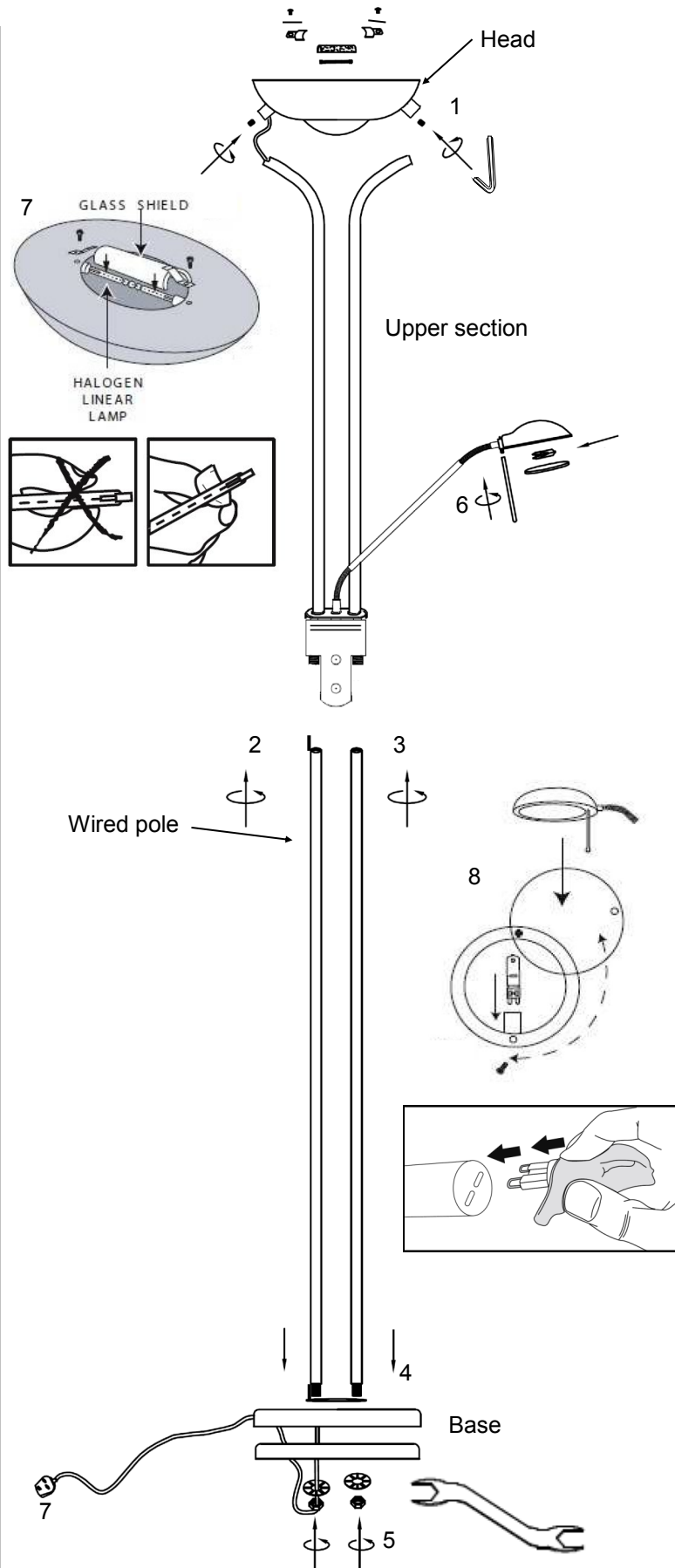
Installation

Installation

IMPORTANT ! - Electrical connections must be carried out by a suitably qualified person and in accordance with all relevant local building and installation regulations. If in doubt consult a qualified electrician.

Installation

1. Insert the upper section into the head and secure using the Allen key provided.
2. Screw the wired pole onto the bottom of the upper section taking care not to twist or damage the cable.
3. Screw the non wired pole onto the bottom of the upper section.
4. Place the assembled poles through the base cover and base weight, with the lower sections in place pull the excess cable through the base taking care not to twist the cable.
5. Secure the lower sections to the base with the washers and hex nuts using the spanner supplied.
6. Screw the adjuster arm into the Child light.
7. Remove the curved glass shield. Insert R7S 118mm into top head lampholder (not supplied). Refit the curved glass shield over top of bulb.
8. Remove one screw from the round glass shield from the adjustable head and slide to one side to gain access. Insert the G9 bulb (not supplied) into the lamp holder. Move the round glass shield back into place and re insert screw.
9. Connect the plug to a normal household socket and using the rotary dimmer controls turn on the light to test. The rotary controls are also used to dim the light level for both lights.



REPLACING THE BULBS

REPLACE THE BULB BY USING GENTLE PRESSURE WHEN INSERTING IT INTO THE LAMP HOLDER, MAKING SURE THAT YOU DON'T HAVE DIRECT CONTACT WITH THE BULB AS THIS WILL SHORTEN THE LIFE OF THE BULB, USE A LINT FREE CLOTH OR SIMILAR

REPLACEMENT LAMP
Maximum wattage – See lamp holder
Light bulb shape - See lamp holder

