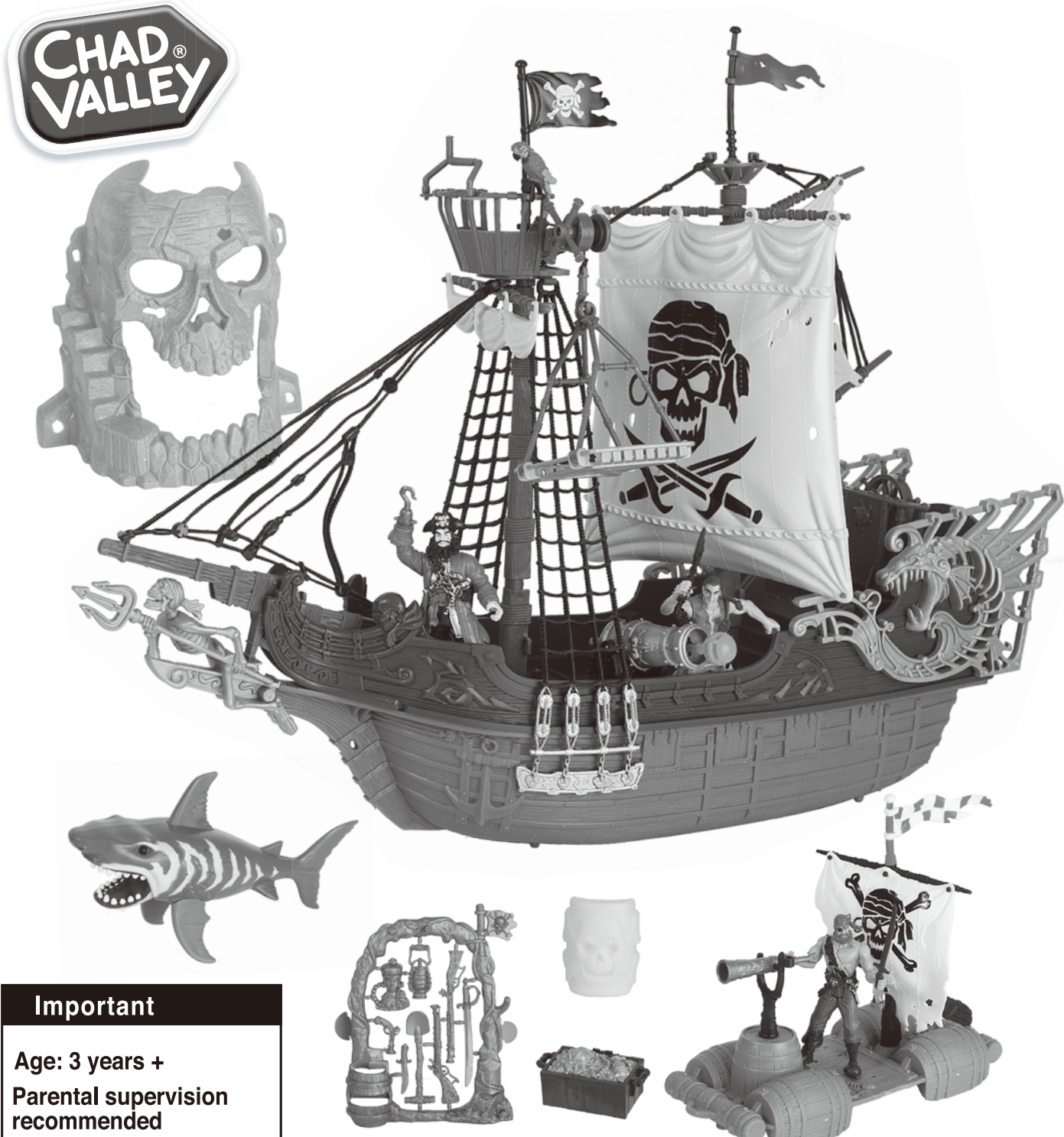


CV Deluxe Pirate Combo set

Assembly Instructions - Please keep for future reference 404/8680



Important - Please read these instructions fully before assembly or use

These instructions contain important information which will help you get the best from your product and ensure safe and correct assembly, use and maintenance.
If you need help or have damaged or missing parts, call the **Customer Helpline: 0345 640 0800**

Issue 1 - 01/04/15

Safety Information

Important - Please read these instructions fully before assembly or use

General Safety

- Please read enclosed instructions before use
- Remove all packaging before giving to your child.
- Specifications, colours and contents may vary from illustration.
- Please keep this packaging for reference since it contains important information.
- Young children in play are unaware of potential dangers and hazards, therefore responsible adult supervision is essential.
- Parental supervision recommended.

WARNING: Not suitable for children under 36 months. Small parts. Choking Hazard.

WARNING: Not suitable for children under 36 months. Long cord. Strangulation hazard.

WARNING: Do not aim at the eyes or face.

• Do not use projectiles other than those supplied with the toy or recommended by the manufacturer.

Before use

- Wipe clean with clean and dry cloth before use.
- Adult should check the product regularly.

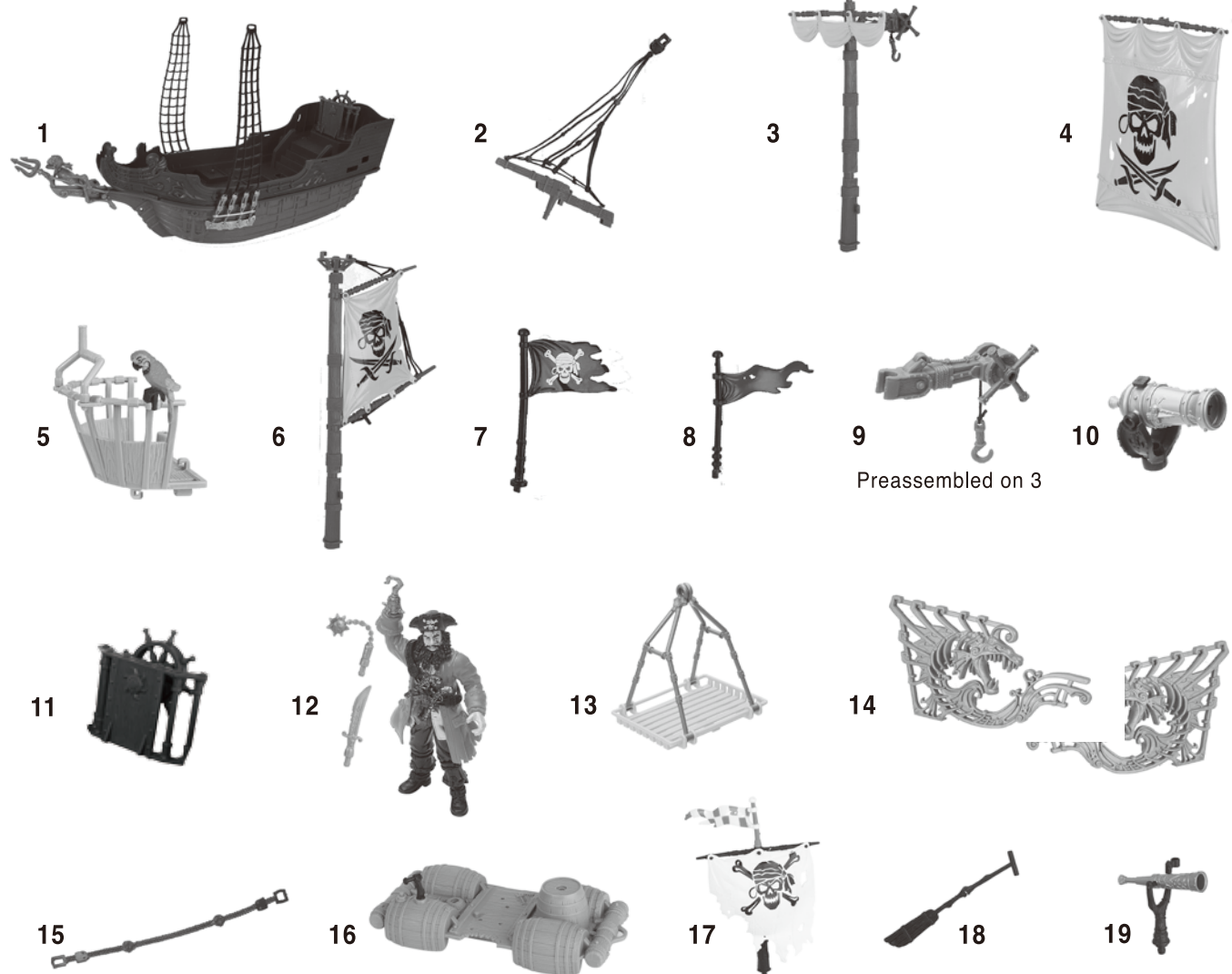
1

Parts

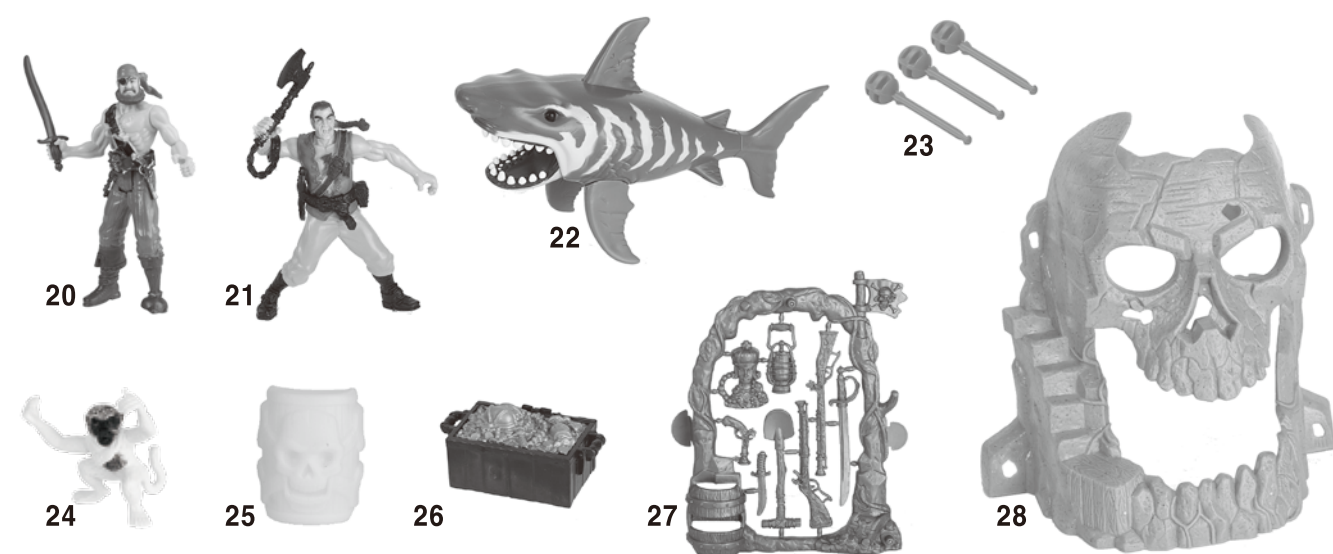
If you have damaged or missing parts, call the **Customer Helpline: 0345 640 0800**

Please check you have all the parts and fittings listed below

Parts need to be assembled



Parts no need to be assembled

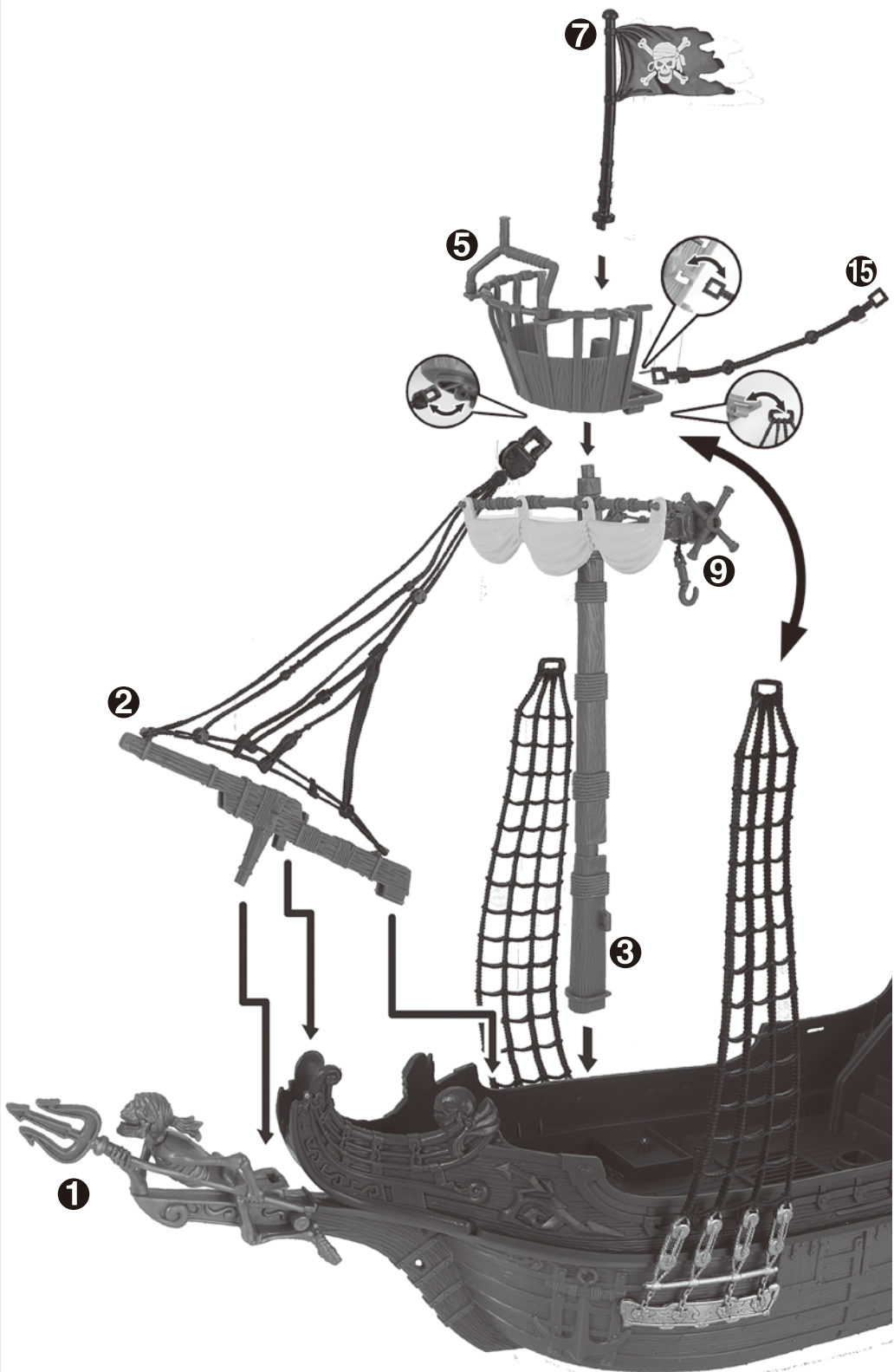


2

Assembly Instructions

Step 1

Assemble the unit according to diagram shown.

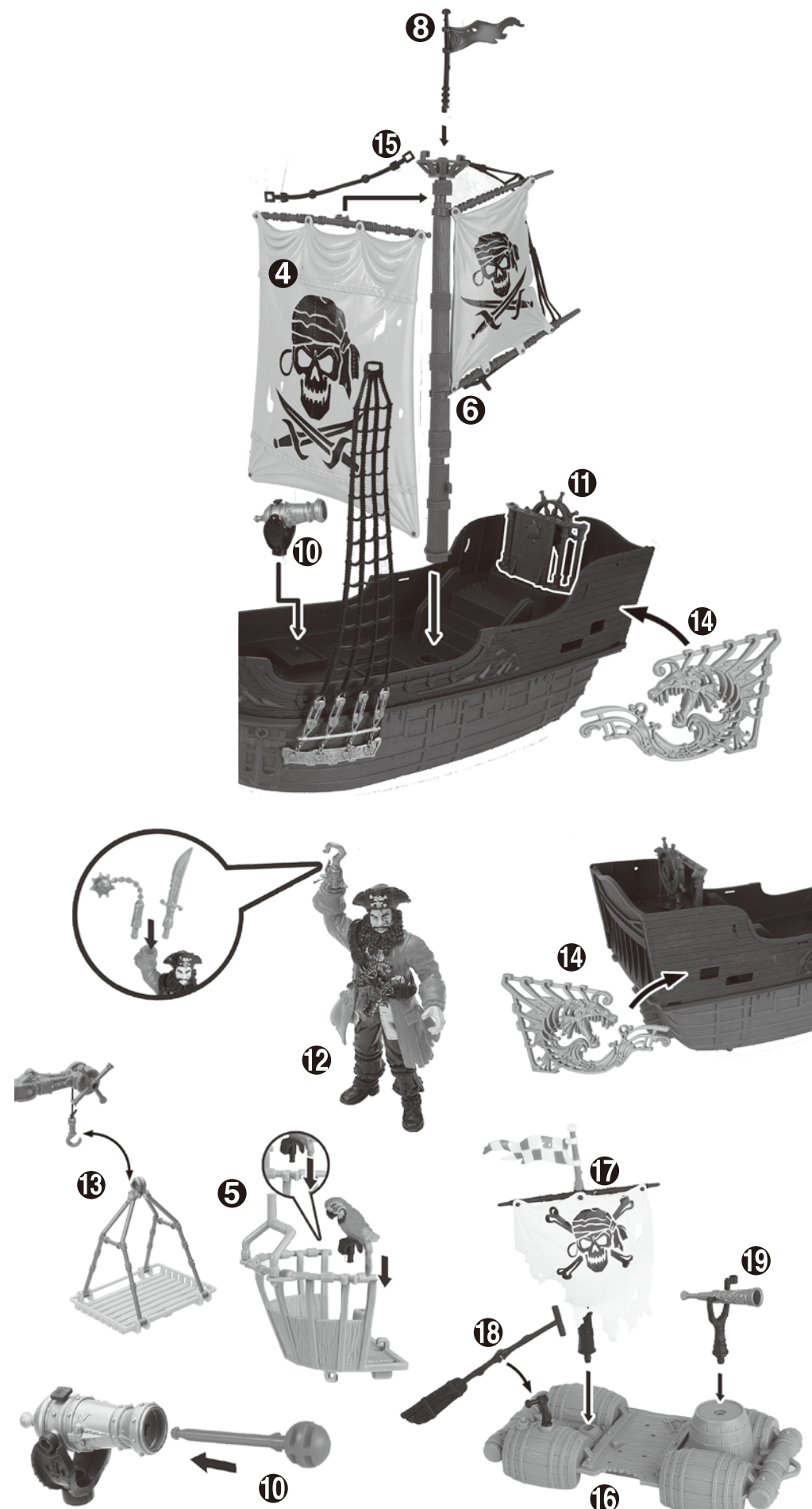


3

Assembly Instructions

Step 2

Assemble the unit according to diagram shown.



Step 3

Assemble the unit according to diagram shown.

4

Care and Maintenance

General

- Wipe clean with clean and dry cloth before storage.
- Adult should check the product regularly.



Not suitable for children under 3 years due to small parts, choking hazard.

If you need help or have damaged or missing parts, call **Customer Helpline: 0345 640 0800**
Produced for Chad Valley Toys: Argos Limited. Country of origin: China
Address: 489-499 Avebury Boulevard, Central Milton Keynes, MK9 2NW.
www.argos.co.uk/chadvalley

5

摺法參考

步驟一



完成圖

